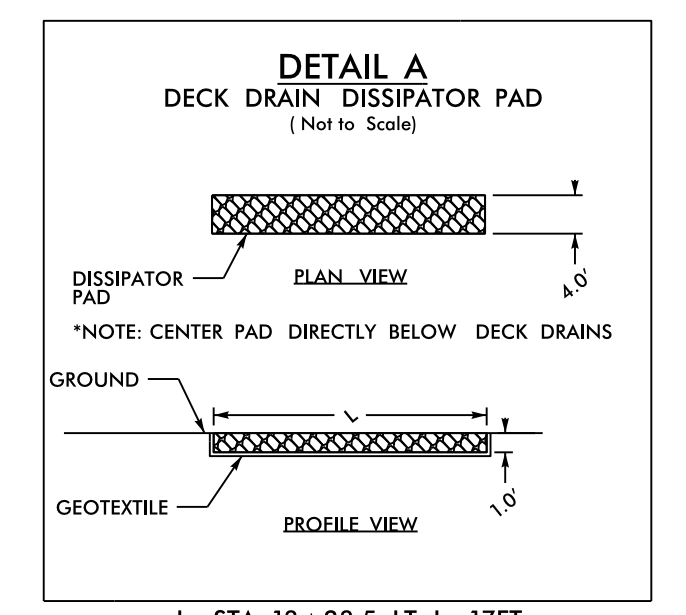
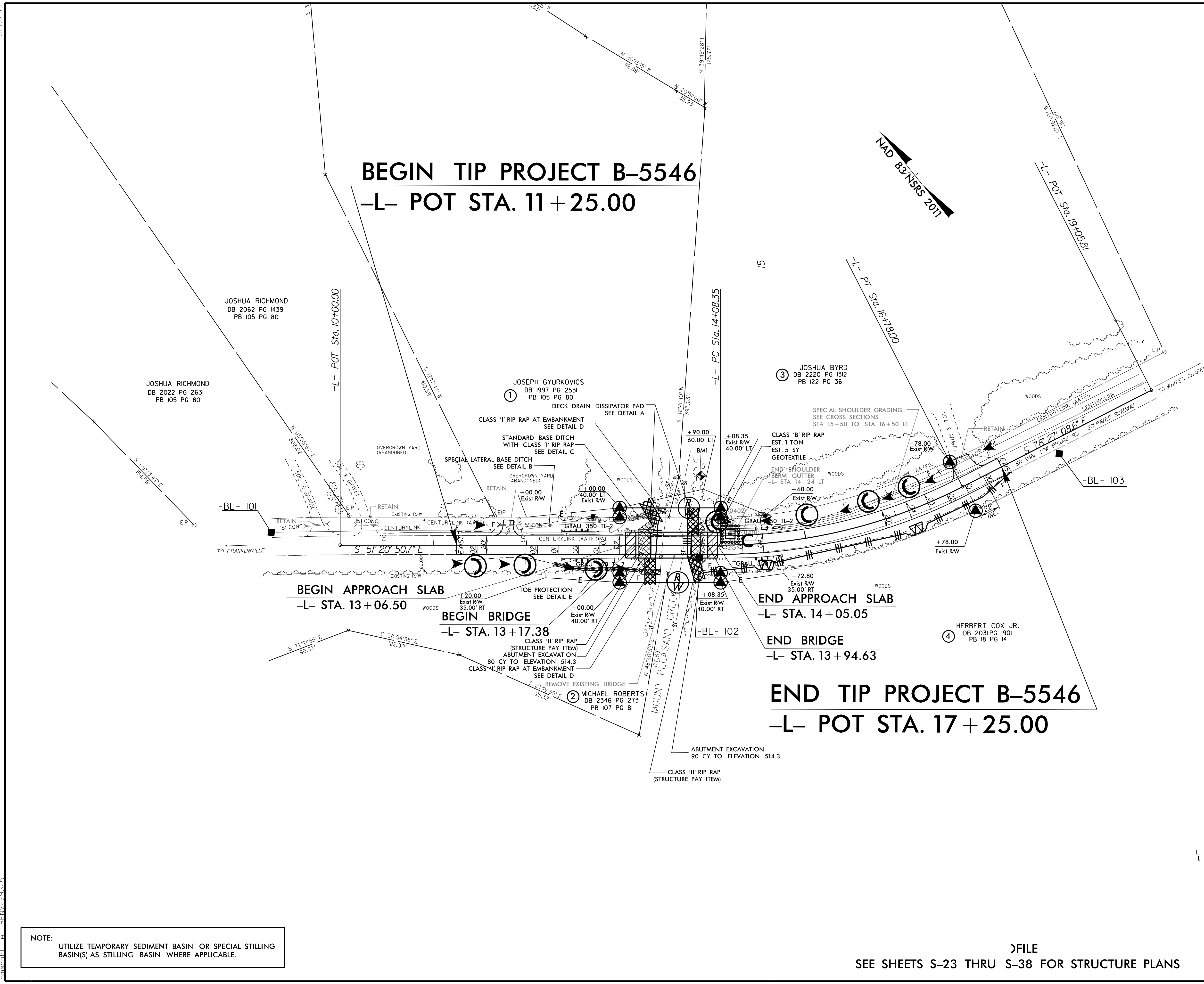


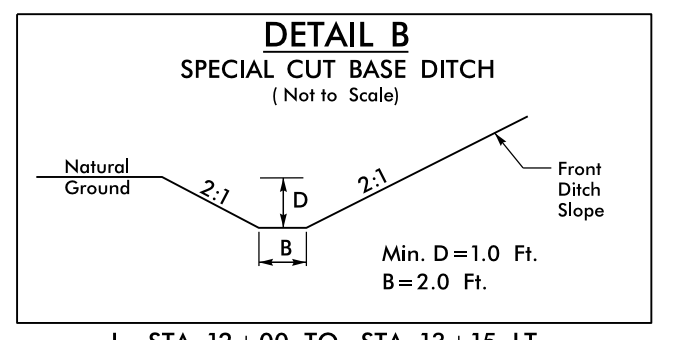
PROJECT REFERENCE NO.	SHEET NO.
B-5546	EC-05/CONST.4
RW SHEET NO.	
ROADWAY DESIGN ENGINEER	HYDRAULICS ENGINEER

**BEGIN TIP PROJECT B-5546**  
**-L- POT STA. 11 + 25.00**

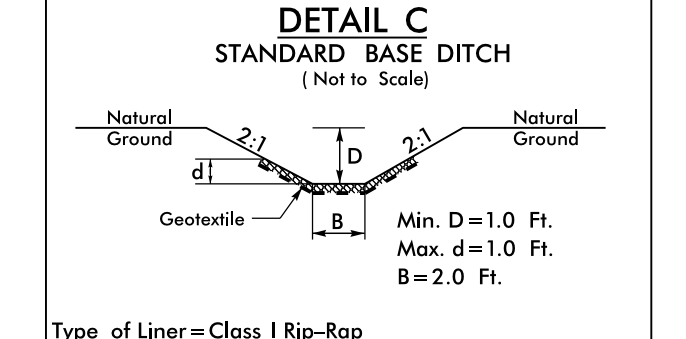
**END TIP PROJECT B-5546**  
**-L- POT STA. 17 + 25.00**



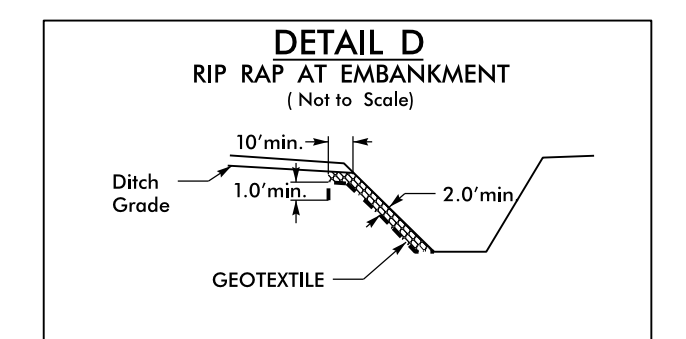
-L- STA 13 + 23.5 LT; L=17FT,  
 CLASS 'B' RIP RAP=4 TONS, GEOTEXTILE=80 SY  
 -L- STA 13 + 76.5 LT; L=15FT,  
 CLASS 'B' RIP RAP=4 TONS, GEOTEXTILE=70 SY



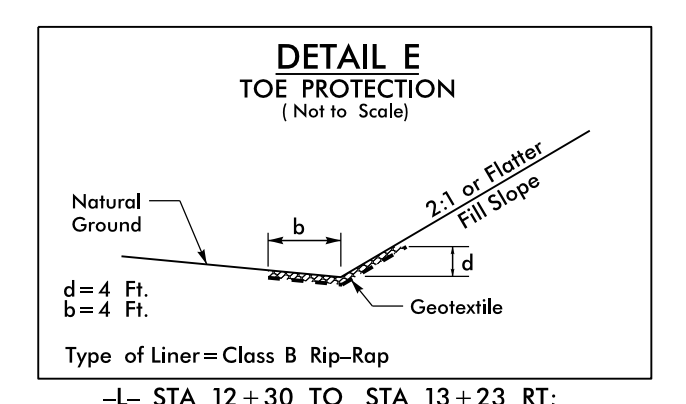
-L- STA 12 + 00 TO STA 13 + 15 LT



Type of Liner=Class I Rip-Rap  
 -L- STA 13 + 15 LT; L=30FT, S=11.5%, DDE=30 CY,  
 CLASS 'I' RIP RAP=30 TONS, GEOTEXTILE=120 SY



-L- STA 13 + 23 RT; CLASS 'I' RIP RAP=15 TONS, GEOTEXTILE=90 SY  
 -L- STA 13 + 40 LT; CLASS 'I' RIP RAP=7 TONS, GEOTEXTILE=50 SY



Type of Liner=Class B Rip-Rap  
 -L- STA 12 + 30 TO STA 13 + 23 RT;  
 CLASS 'B' RIP RAP=70 TONS, GEOTEXTILE=400 SY

**NOTE:**  
 UTILIZE TEMPORARY SEDIMENT BASIN OR SPECIAL STILLING BASIN(S) AS STILLING BASIN WHERE APPLICABLE.

FILE  
 SEE SHEETS S-23 THRU S-38 FOR STRUCTURE PLANS

8/17/99  
 30 JUN 2016 11:53  
 C:\Users\jrm\OneDrive\Documents\B-5546\_EC-dsm\_NMS.dgn  
 AT: BREN275125