

STATE	STATE PROJECT REFERENCE NO.	SHEET NO.	TOTAL SHEETS
N.C.	B-5546	1	
STATE PROJ. NO.	F.A. PROJ. NO.	DESCRIPTION	
45538.1.1	BRZ-2481(1)	PE	
45538.2.1		R/W & UTIL.	
46074.3.1		CONST.	

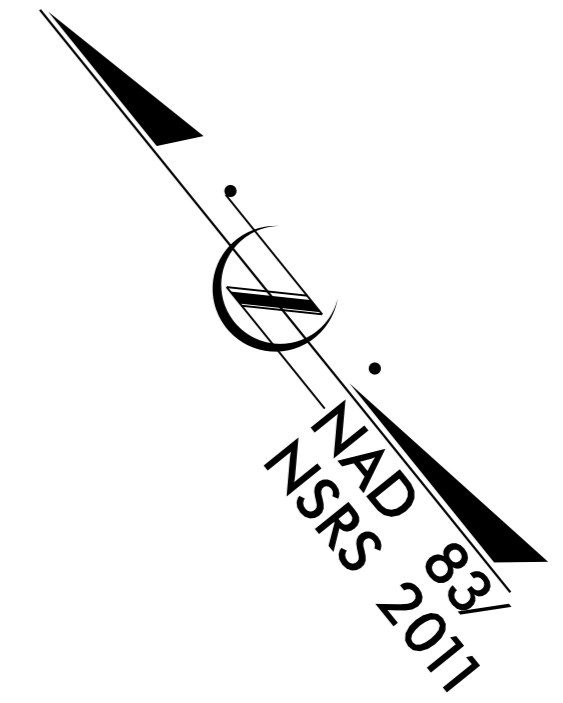
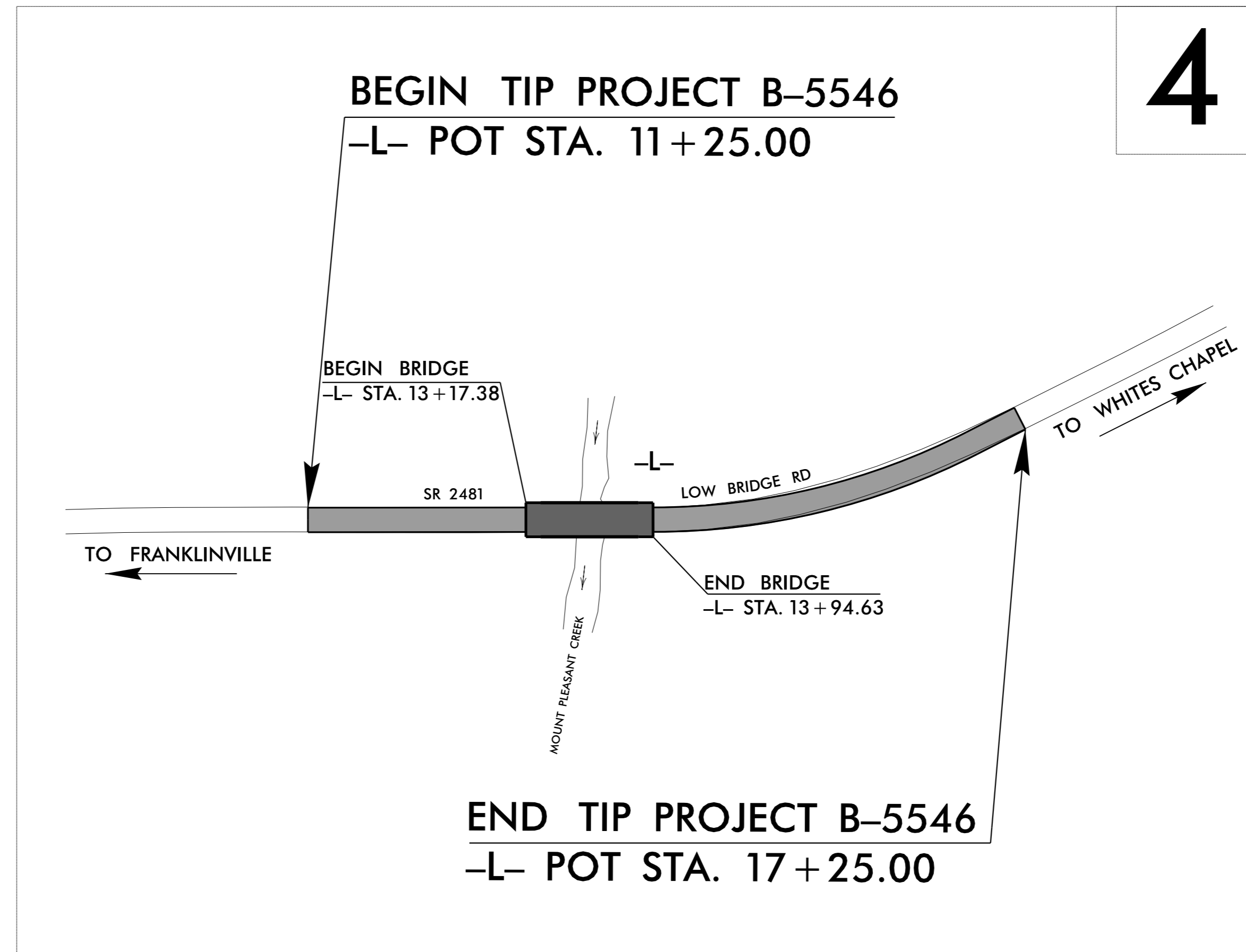
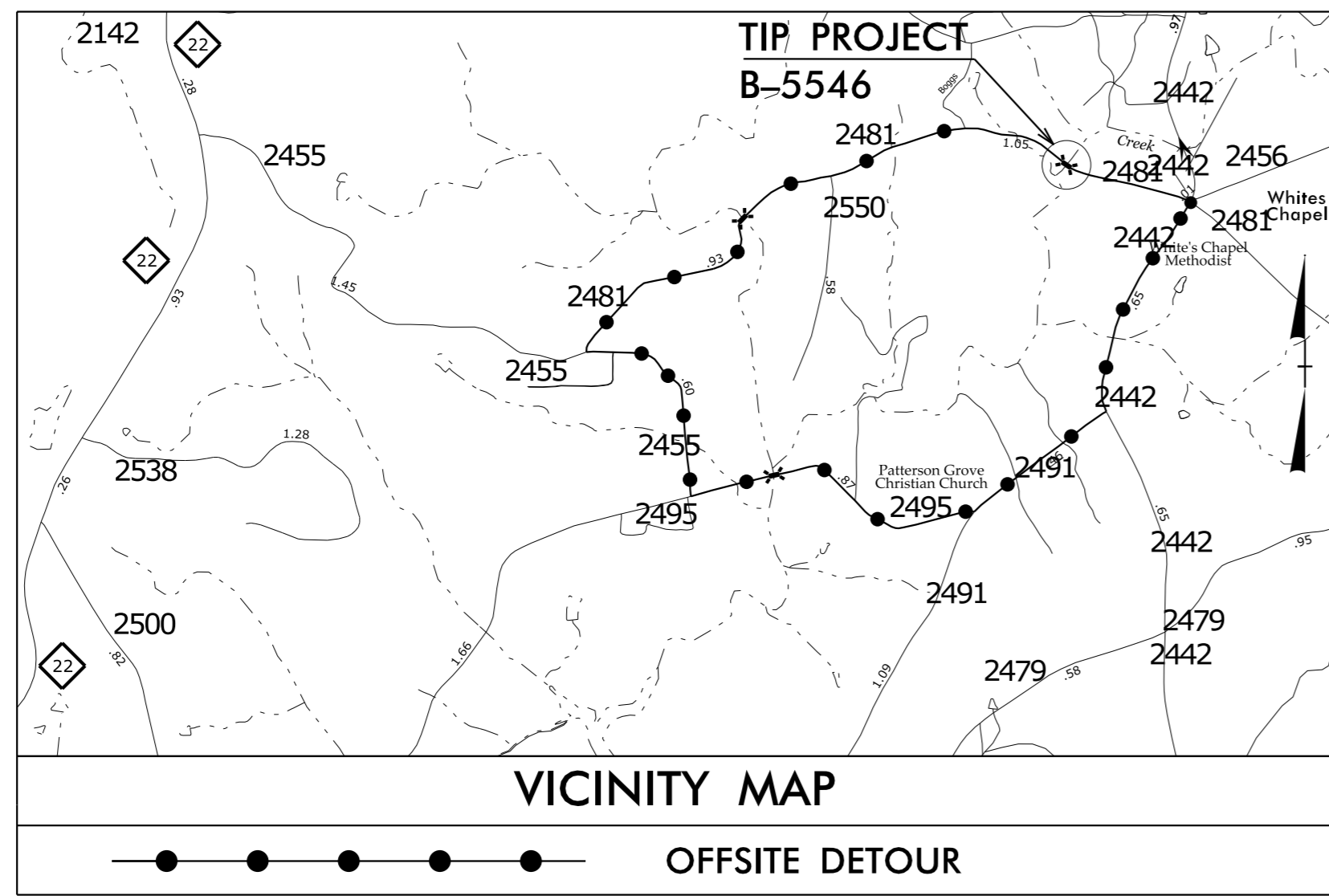
PART 2

STATE OF NORTH CAROLINA DIVISION OF HIGHWAYS

RANDOLPH COUNTY

**LOCATION: BRIDGE NO. 307 OVER MOUNT PLEASANT CREEK
ON SR 2481 (LOW BRIDGE RD.)**

TYPE OF WORK: GRADING, DRAINAGE, PAVING AND STRUCTURE

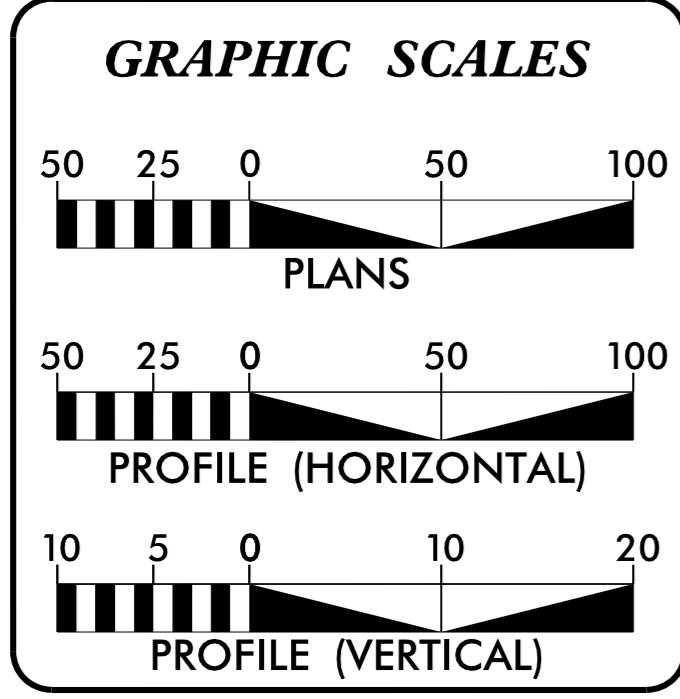


DESIGN EXCEPTION REQUIRED FOR SAG VERTICAL CURVE K FACTOR AND NIGHTTIME STOPPING SIGHT DISTANCE.

DOCUMENT NOT CONSIDERED FINAL
UNLESS ALL SIGNATURES COMPLETED

TIP PROJECT: B-5546

CONTRACT: C203805



DESIGN DATA

ADT 2014 =	400
ADT 2040 =	700
K =	13 %
D =	60 %
T =	9 % *
V =	40 MPH
*TTST =	1% DUAL=8%
FUNC CLASS =	RURAL, LOCAL
SUB REGIONAL TIER	

PROJECT LENGTH

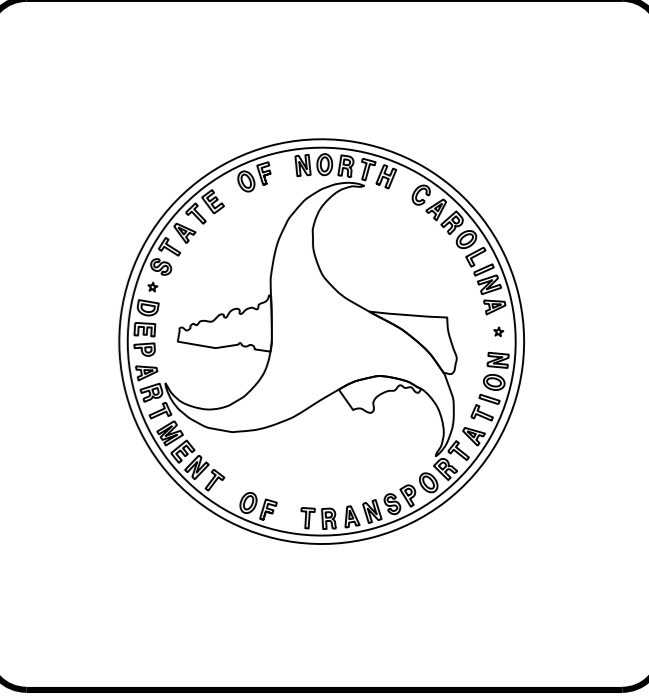
LENGTH ROADWAY TIP PROJECT B-5546 =	0.099 MI
LENGTH STRUCTURE TIP PROJECT B-5546 =	0.015 MI
TOTAL LENGTH OF TIP PROJECT B-5546 =	0.114 MI

Prepared in the Office of:
DIVISION OF HIGHWAYS
1000 Birch Ridge Dr., Raleigh NC, 27610

2012 STANDARD SPECIFICATIONS	
RIGHT OF WAY DATE: OCTOBER 6, 2015	JAMES A. SPEER, P.E. PROJECT ENGINEER
LETTING DATE: OCTOBER 18, 2016	NYA K. BOAYUE, PE PROJECT DESIGN ENGINEER

HYDRAULICS ENGINEER
7/26/2016
DocuSigned by: Ernest J. Harkin
SIGNATURE

ROADWAY DESIGN ENGINEER
7/26/2016
DocuSigned by: NYA K. Boayue
SIGNATURE



25-JUL-2016 16:09 R:\Roadway\Proj\B-5546_Rdy_Tsh.dgn \$\$\$\$USERNAME\$\$\$