

MINIMUM OF 3- ONE CUBIC FOOT BAGS OF #78M STONE. BAGS SHALL BE OF POROUS FABRIC, SECURELY TIED.

6" (MIN.) PIPE FOR DRAINAGE

GRADE TO DRAIN

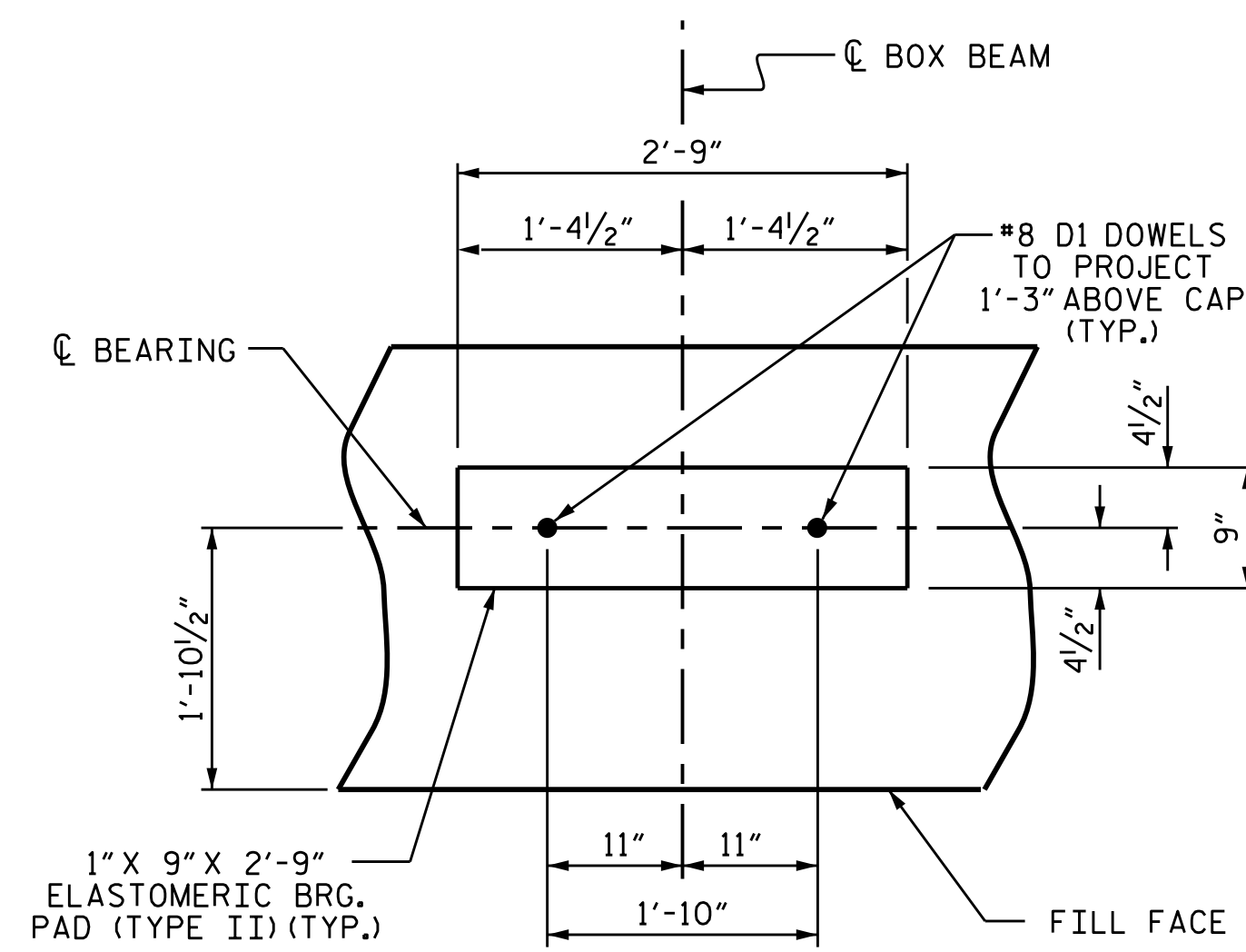
TOE OF SLOPE

BAGGED STONE AND PIPE SHALL BE PLACED IMMEDIATELY AFTER COMPLETION OF END BENT EXCAVATION. PIPE MAY BE EITHER CONCRETE, CORRUGATED STEEL, CORRUGATED ALUMINUM ALLOY, OR CORRUGATED PLASTIC. PERFORATED PIPE WILL NOT BE ALLOWED.

BAGGED STONE SHALL REMAIN IN PLACE UNTIL THE ENGINEER DIRECTS THAT IT BE REMOVED. THE CONTRACTOR SHALL REMOVE AND DISPOSE OF SILT ACCUMULATIONS AT BAGGED STONE WHEN SO DIRECTED BY THE ENGINEER. BAGS SHALL BE REMOVED AND REPLACED WHENEVER THE ENGINEER DETERMINES THAT THEY HAVE DETERIORATED AND LOST THEIR EFFECTIVENESS.

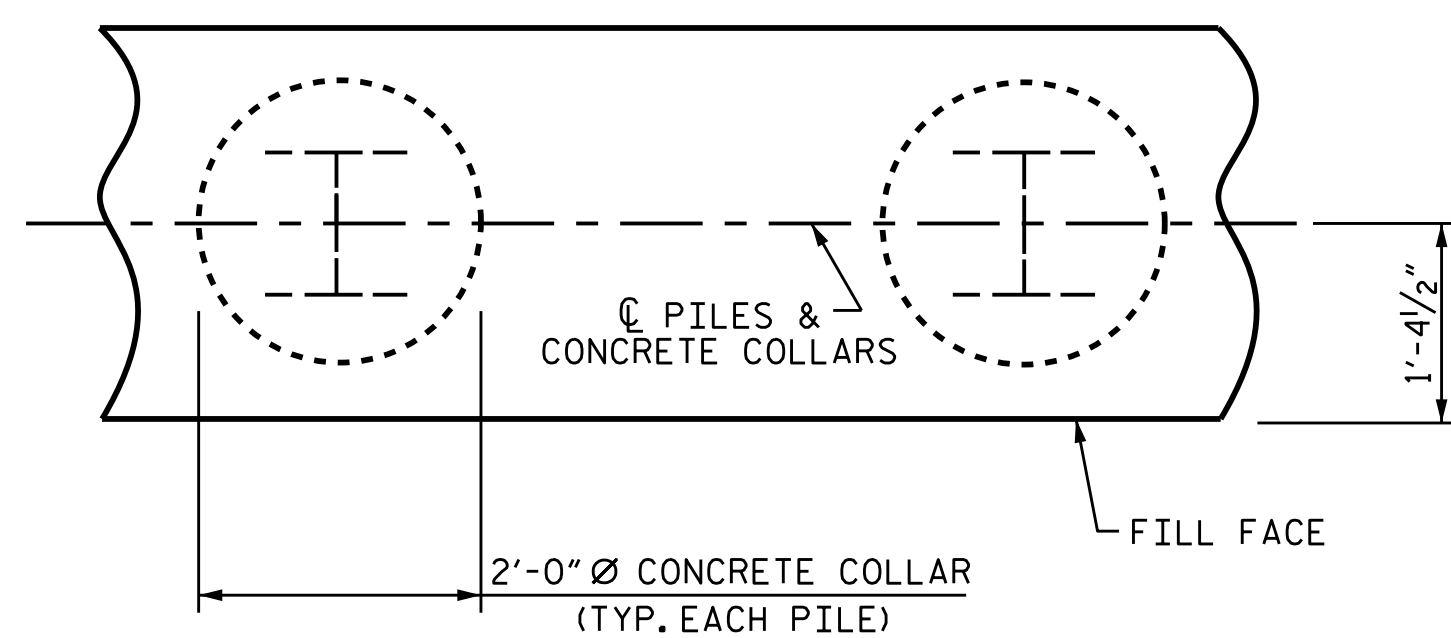
NO SEPARATE PAYMENT WILL BE MADE FOR THIS WORK AND THE ENTIRE COST OF THIS WORK SHALL BE INCLUDED IN THE UNIT CONTRACT PRICE BID FOR THE SEVERAL PAY ITEMS.

### TEMPORARY DRAINAGE AT END BENT



DETAIL "A"

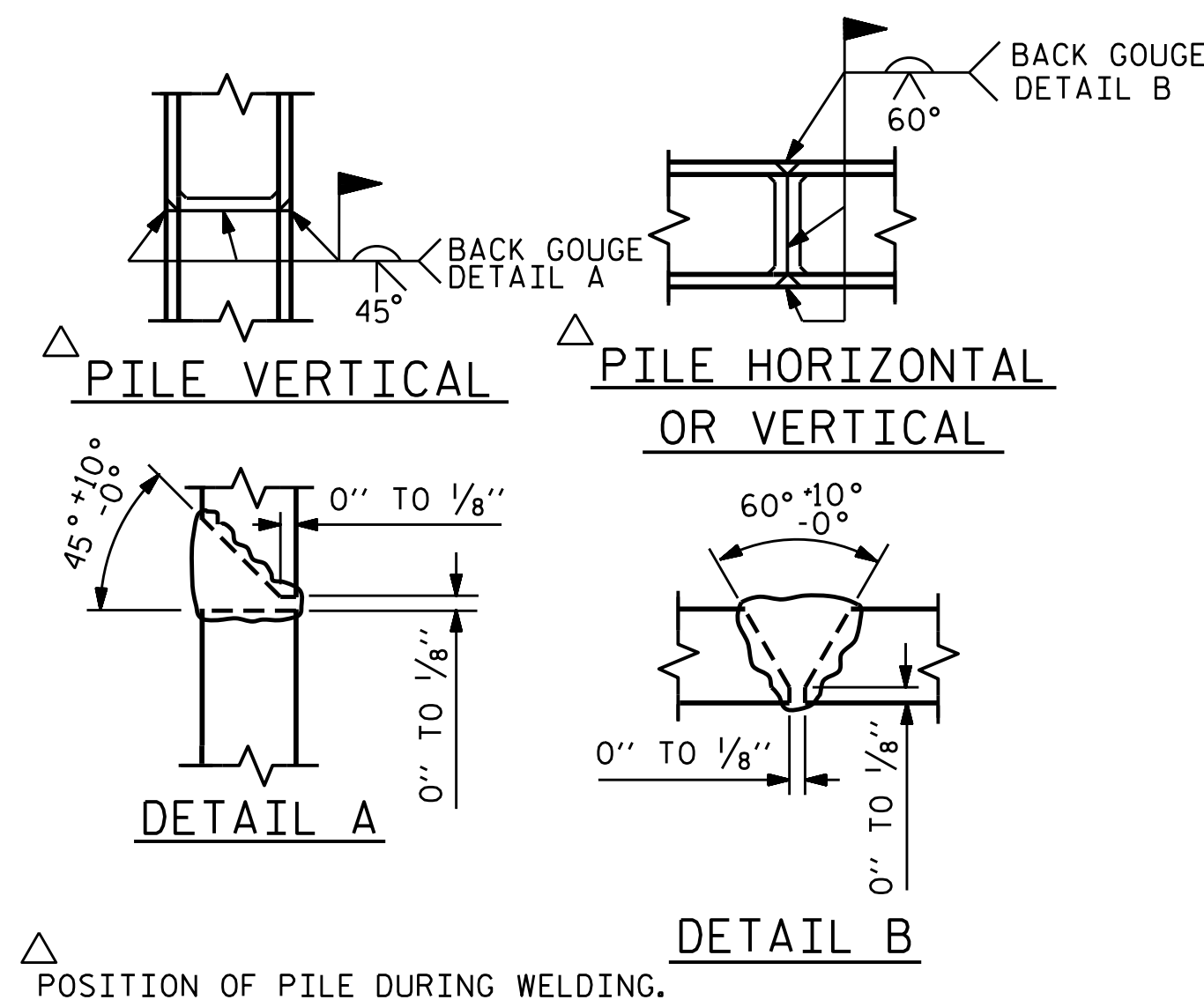
(END BENT 1 SHOWN, END BENT 2 SIMILAR BY ROTATION)



PLAN

### CORROSION PROTECTION FOR STEEL PILES DETAIL

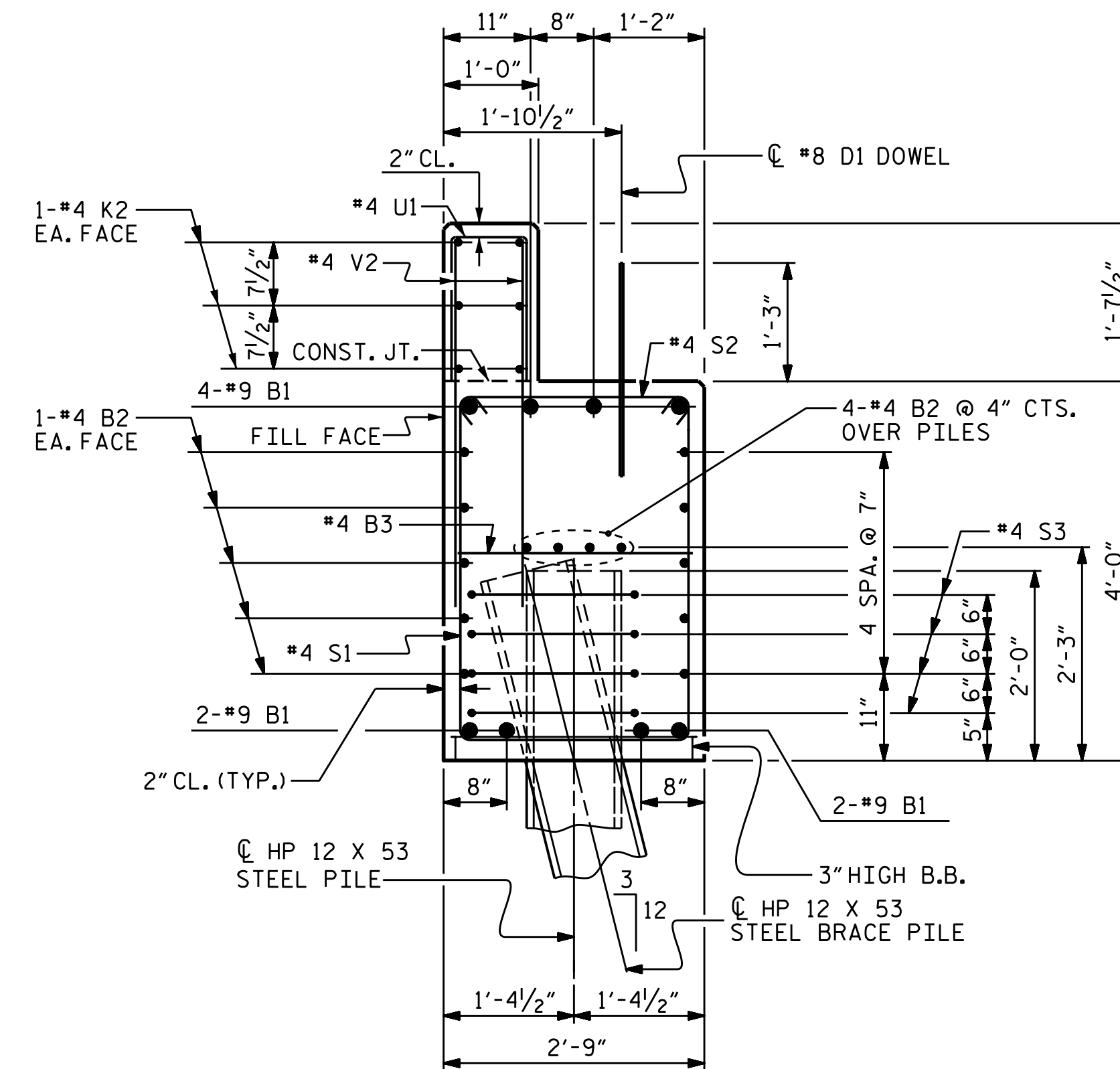
(END BENT 1 SHOWN, END BENT 2 SIMILAR BY ROTATION)



### PILE SPLICE DETAILS

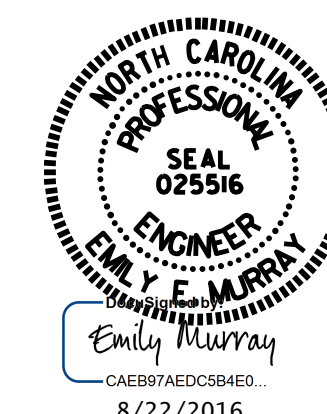
BAR TYPES						BILL OF MATERIAL FOR ONE END BENT					
BAR	NO.	SIZE	TYPE	LENGTH	WEIGHT	BAR	NO.	SIZE	TYPE	LENGTH	WEIGHT
B1	8	#9	1	38'-0"	1034	B1	8	#9	1	38'-0"	1034
B2	28	#4	STR	19'-1"	357	B2	28	#4	STR	19'-1"	357
B3	9	#4	STR	2'-5"	15	B3	9	#4	STR	2'-5"	15
D1	20	#8	STR	2'-3"	120	D1	20	#8	STR	2'-3"	120
H1	48	#5	2	11'-4"	567	H1	48	#5	2	11'-4"	567
K1	12	#4	STR	2'-11"	23	K1	12	#4	STR	2'-11"	23
K2	12	#4	STR	19'-1"	153	K2	12	#4	STR	19'-1"	153
S1	46	#4	3	10'-5"	320	S1	46	#4	3	10'-5"	320
S2	46	#4	4	3'-2"	97	S2	46	#4	4	3'-2"	97
S3	20	#4	5	6'-6"	87	S3	20	#4	5	6'-6"	87
U1	30	#4	6	3'-7"	72	U1	30	#4	6	3'-7"	72
V1	60	#4	STR	7'-2"	287	V1	60	#4	STR	7'-2"	287
V2	60	#4	STR	5'-3"	210	V2	60	#4	STR	5'-3"	210
REINFORCING STEEL (FOR ONE END BENT)						LBS. 3,342					
CLASS A CONCRETE BREAKDOWN (FOR ONE END BENT)											
POUR #1 CAP, LOWER PART OF WINGS & COLLARS						C.Y. 18.5					
POUR #2 BACKWALL & UPPER PART OF WINGS						C.Y. 5.2					
TOTAL CLASS A CONCRETE						C.Y. 23.8					

END BENT 1		END BENT 2	
HP 12 X 53 STEEL PILES	NO: 5	HP 12 X 53 STEEL PILES	NO: 5
LIN. FT. = 125		LIN. FT. = 100	
STEEL PILE POINTS EACH 5		STEEL PILE POINTS EACH 5	



SECTION A-A

(CONCRETE COLLAR NOT SHOWN FOR CLARITY. SEE "CORROSION PROTECTION FOR STEEL PILES DETAIL.")



PROJECT NO. B-5546  
 RANDOLPH COUNTY  
 STATION: 13+56.00-L-

SHEET 4 OF 4

STATE OF NORTH CAROLINA  
 DEPARTMENT OF TRANSPORTATION  
 RALEIGH

SUBSTRUCTURE

END BENT 1 & 2  
 DETAILS

ASSEMBLED BY : D.A. DAVENPORT	DATE : 09/22/14
CHECKED BY : J.K. BOWLES	DATE : 04/25/16
DRAWN BY : WJH	12/11
CHECKED BY : AAC	12/11
REV. 8/14	MAA/TMG

DOCUMENT NOT CONSIDERED  
 FINAL UNLESS ALL  
 SIGNATURES COMPLETED

REVISIONS						SHEET NO.	
NO.	BY:	DATE:	NO.	BY:	DATE:	S-36	
1			3			TOTAL SHEETS	38
2			4				