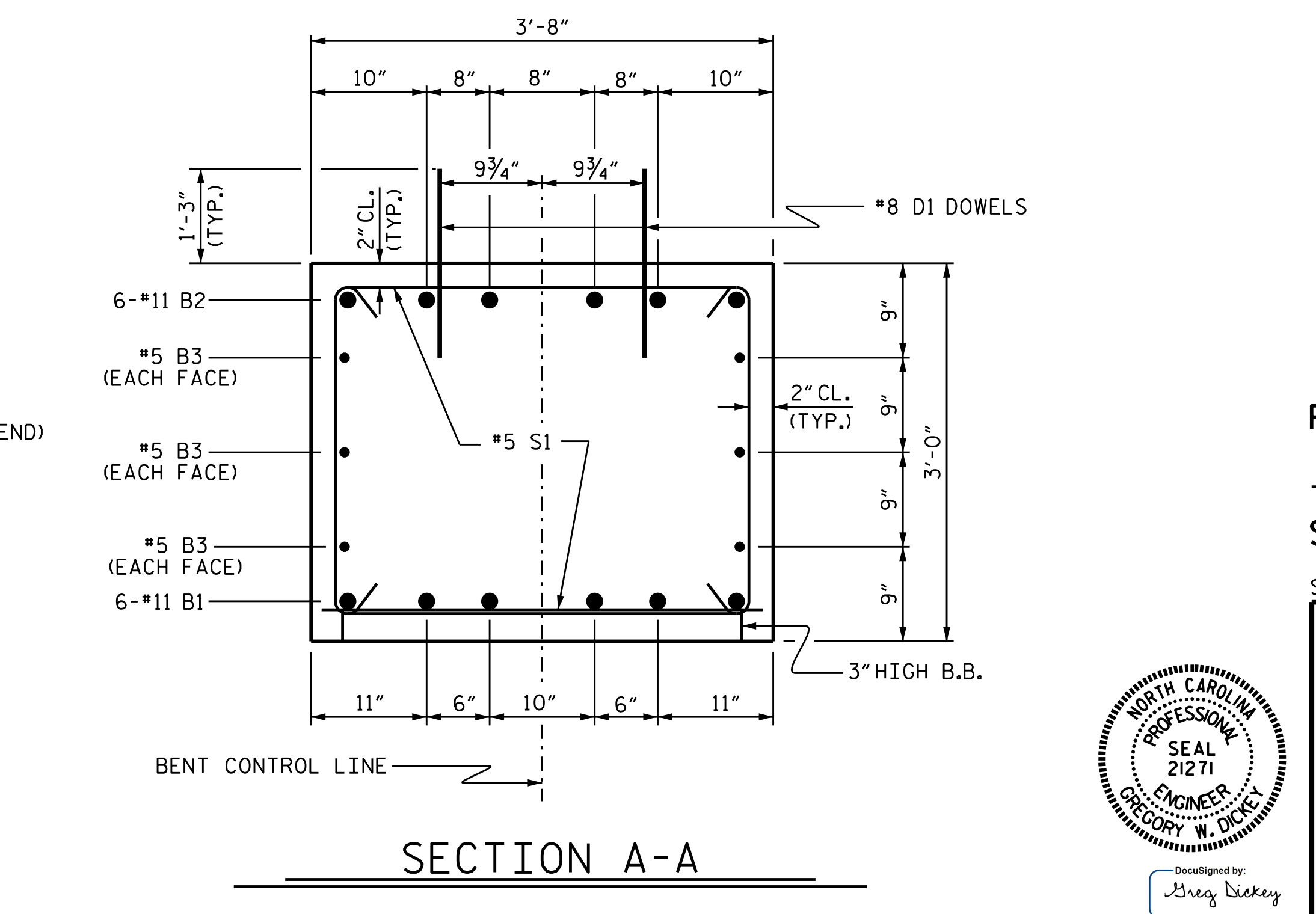
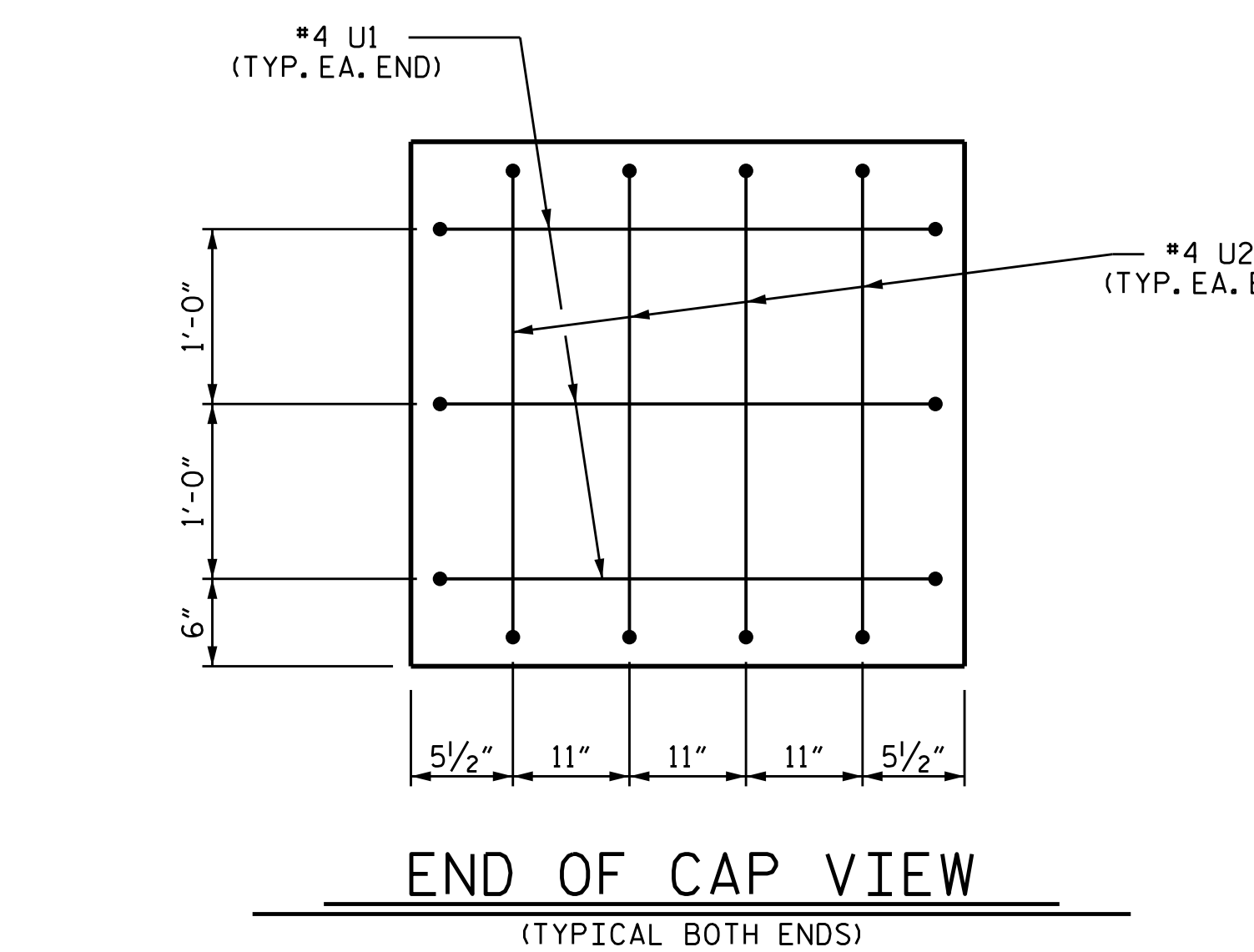
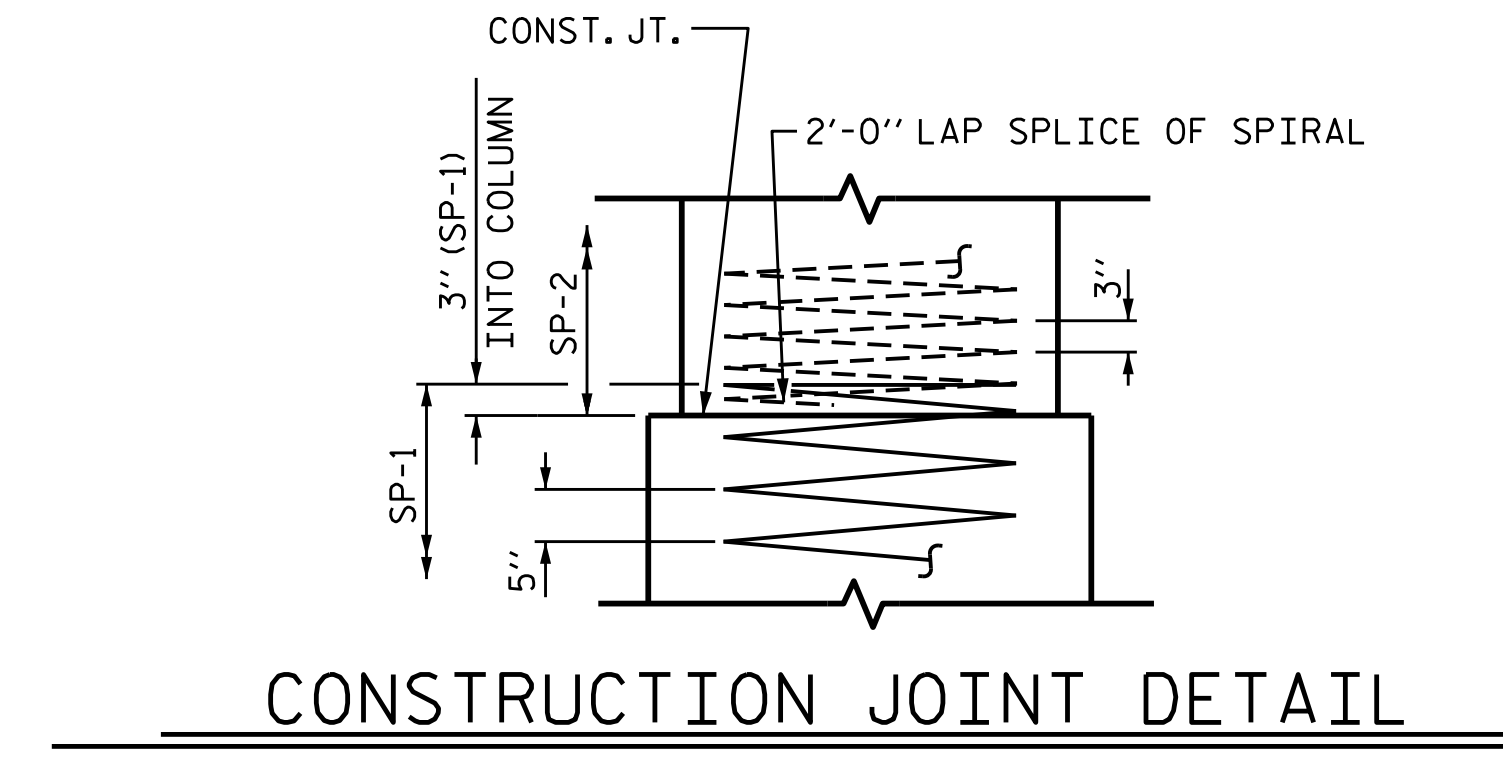
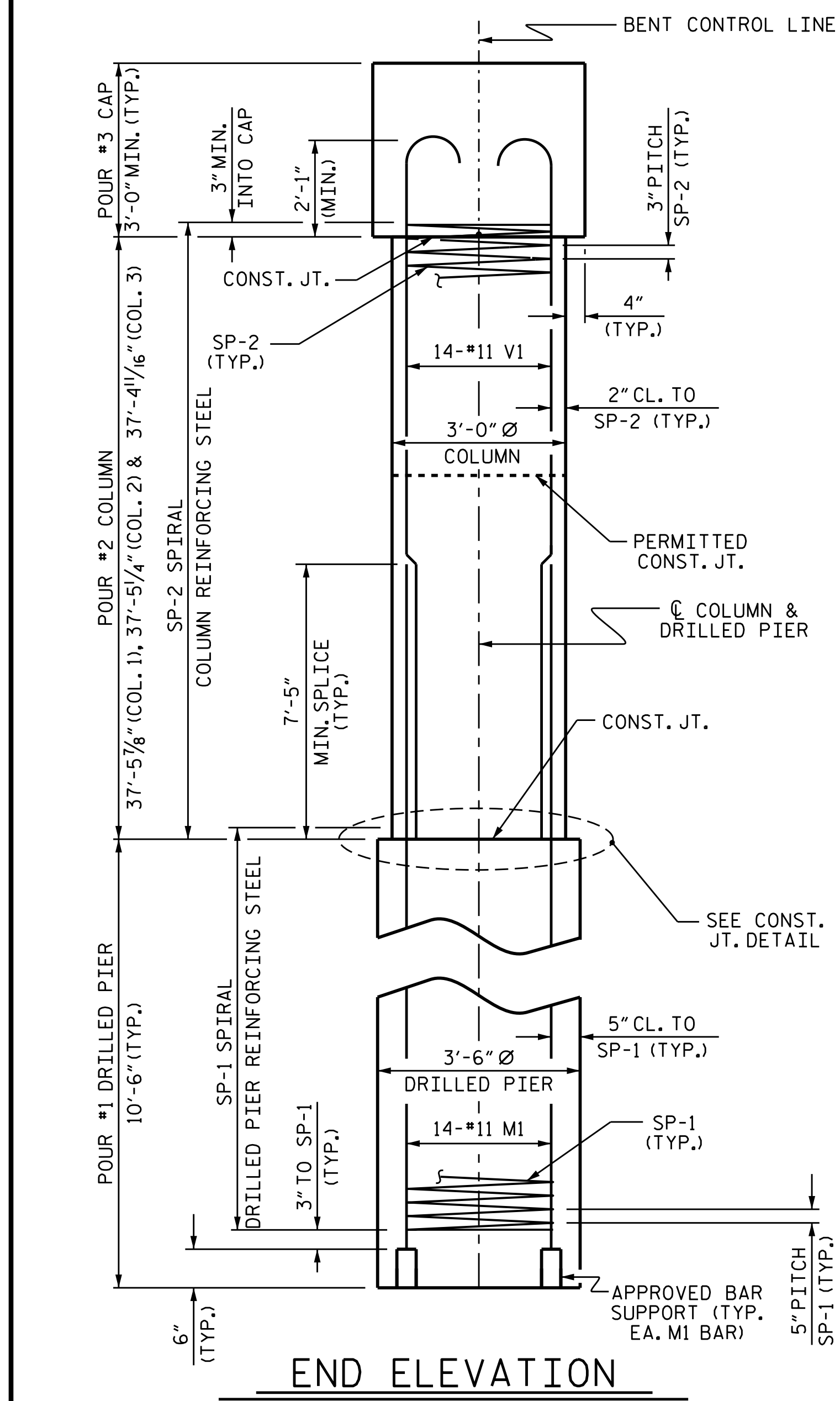


BILL OF MATERIAL FOR ONE BENT					
BAR	NO.	SIZE	TYPE	LENGTH	WEIGHT
B1	6	#11	STR	39'-0"	1243
B2	6	#11	1	42'-0"	1339
B3	6	#5	STR	39'-0"	244
D1	40	#8	STR	2'-3"	240
M1	42	#11	STR	20'-5"	4556
S1	62	#5	2	9'-6"	614
U1	6	#4	3	6'-2"	25
U2	8	#4	3	5'-6"	29
V1	42	#11	4	41'-2"	9186
REINFORCING STEEL (FOR ONE BENT)					17,476 LBS.
SP-1	3	*	5	209'-9"	656 LBS.
SP-2	3	**	6	1257'-11"	2521 LBS.
SPIRAL COLUMN REINFORCING STEEL (FOR ONE BENT)					3177 LBS.
* THE SP-1 SPIRAL REINFORCING STEEL SHALL BE W31 OR D-31 COLD DRAWN WIRE OR #5 PLAIN OR DEFORMED BAR					
** THE SP-2 SPIRAL REINFORCING STEEL SHALL BE W20 OR D-20 COLD DRAWN WIRE OR #4 PLAIN OR DEFORMED BAR					



CLASS A CONCRETE BREAKDOWN (FOR ONE BENT)		
POUR #2 (COLUMNS)		29.4 C.Y.
POUR #3 (CAP)		16.0 C.Y.
TOTAL CLASS A CONCRETE		45.4 C.Y.
DRILLED PIERS: (FOR ONE BENT)		
DRILLED PIER CONCRETE POUR #1 (DRILLED PIERS)		11.2 C.Y.
3'-6" Ø DRILLED PIERS NOT IN SOIL		30 LIN. FT.
3'-6" Ø DRILLED PIERS IN SOIL		1.5 LIN. FT.
PERMANENT STEEL CASING FOR 3'-6" Ø DRILLED PIER		4.5 LIN. FT.
CSL TUBES		144.0 LIN. FT.

PROJECT NO. B-5360
 RANDOLPH COUNTY
 STATION: 23+68.00 -L-

SHEET 2 OF 2

STATE OF NORTH CAROLINA
 DEPARTMENT OF TRANSPORTATION
 RALEIGH

SUBSTRUCTURE
 BENT No. 1

DocuSigned by:
 Greg Dickey
 8/22/2016

REVISIONS					
NO.	BY:	DATE:	NO.	BY:	DATE:
1			3		
2			4		

SHEET NO.	
S-18	TOTAL SHEETS 38

ASSEMBLED BY: A. K. PATEL DATE: 12/4/15
 CHECKED BY: W. F. PARKER DATE: 3/16
 DESIGN ENGINEER OF RECORD: K. P. SEDA DATE: 6/16
 DRAWN BY: DGE 3/10
 CHECKED BY: MKT 3/10
 REV. 11/14 MAA/TMG

DOCUMENT NOT CONSIDERED
 FINAL UNLESS ALL
 SIGNATURES COMPLETED