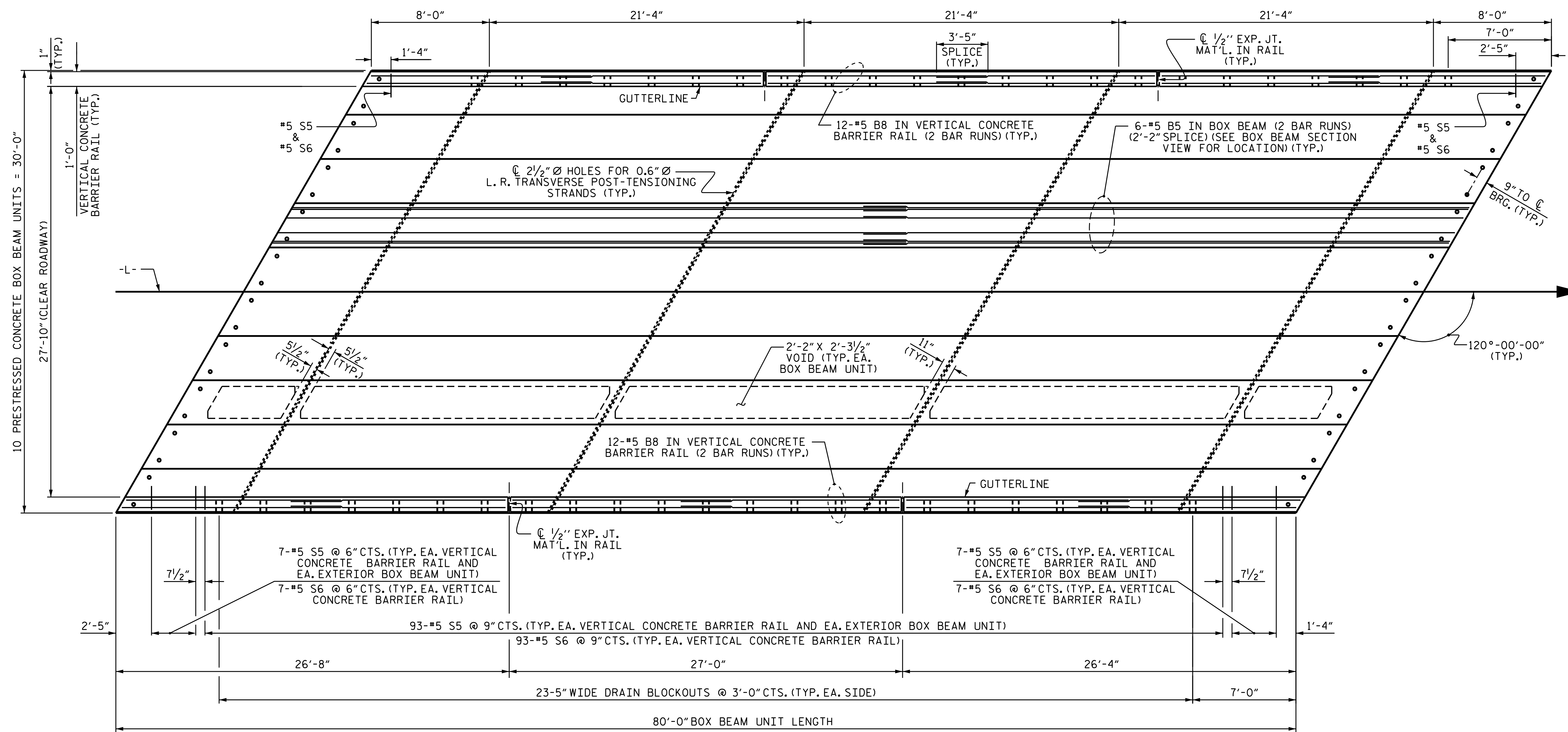
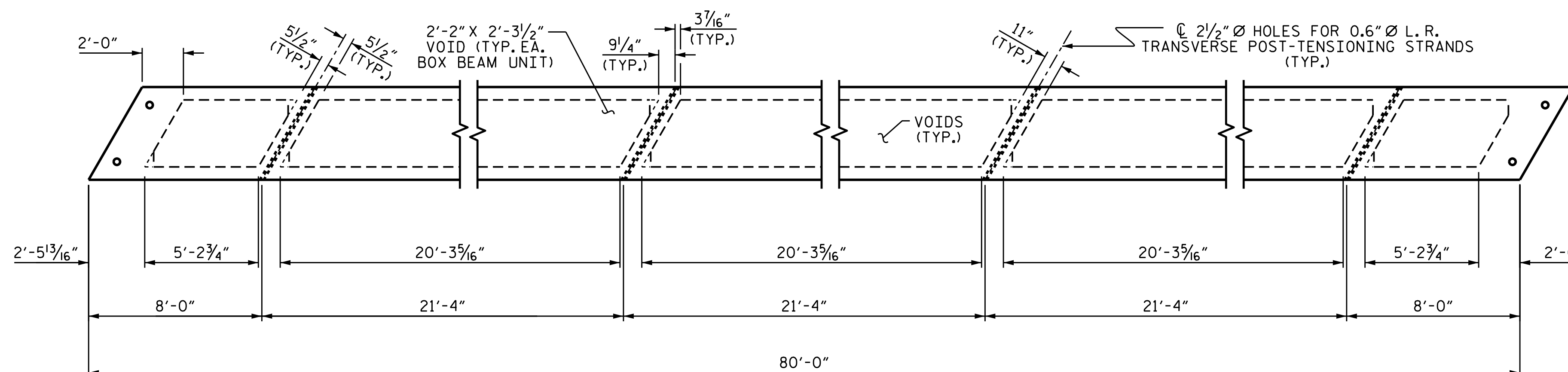


FIX.

EXP.



PLAN OF UNIT



DIAPHRAGM AND VOID LAYOUT

PROJECT NO. B-5360
RANDOLPH COUNTY
 STATION: 23+68.00 -L-

SHEET 3 OF 7

STATE OF NORTH CAROLINA
 DEPARTMENT OF TRANSPORTATION
 RALEIGH

PLAN OF 80' UNIT
 27'-10" CLEAR ROADWAY
 120° SKEW



Designed by:
 Gregory W. Dickey
 8/22/2016

ASSEMBLED BY : A. K. PATEL DATE : 1/14/16
 CHECKED BY : W. F. PARKER DATE : 3/16
 DRAWN BY : DGE 8/11 REV. 8/14 MAA/TMG
 CHECKED BY : TMG 11/11

DOCUMENT NOT CONSIDERED
 FINAL UNLESS ALL
 SIGNATURES COMPLETED

REVISIONS						SHEET NO.
NO.	BY:	DATE:	NO.	BY:	DATE:	S-7
1			3			TOTAL SHEETS
2			4			38