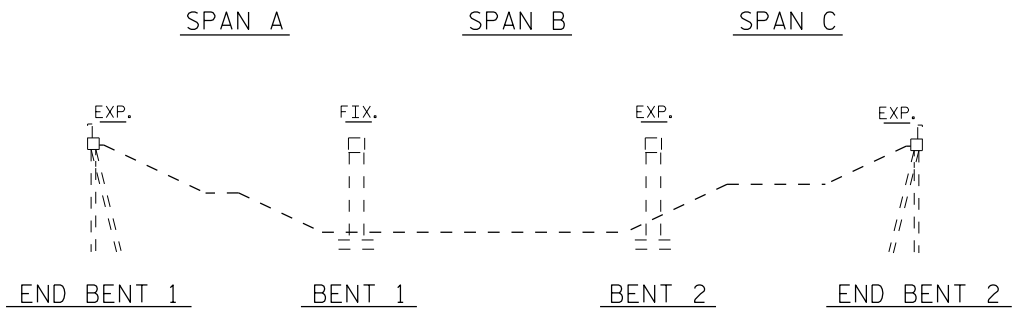
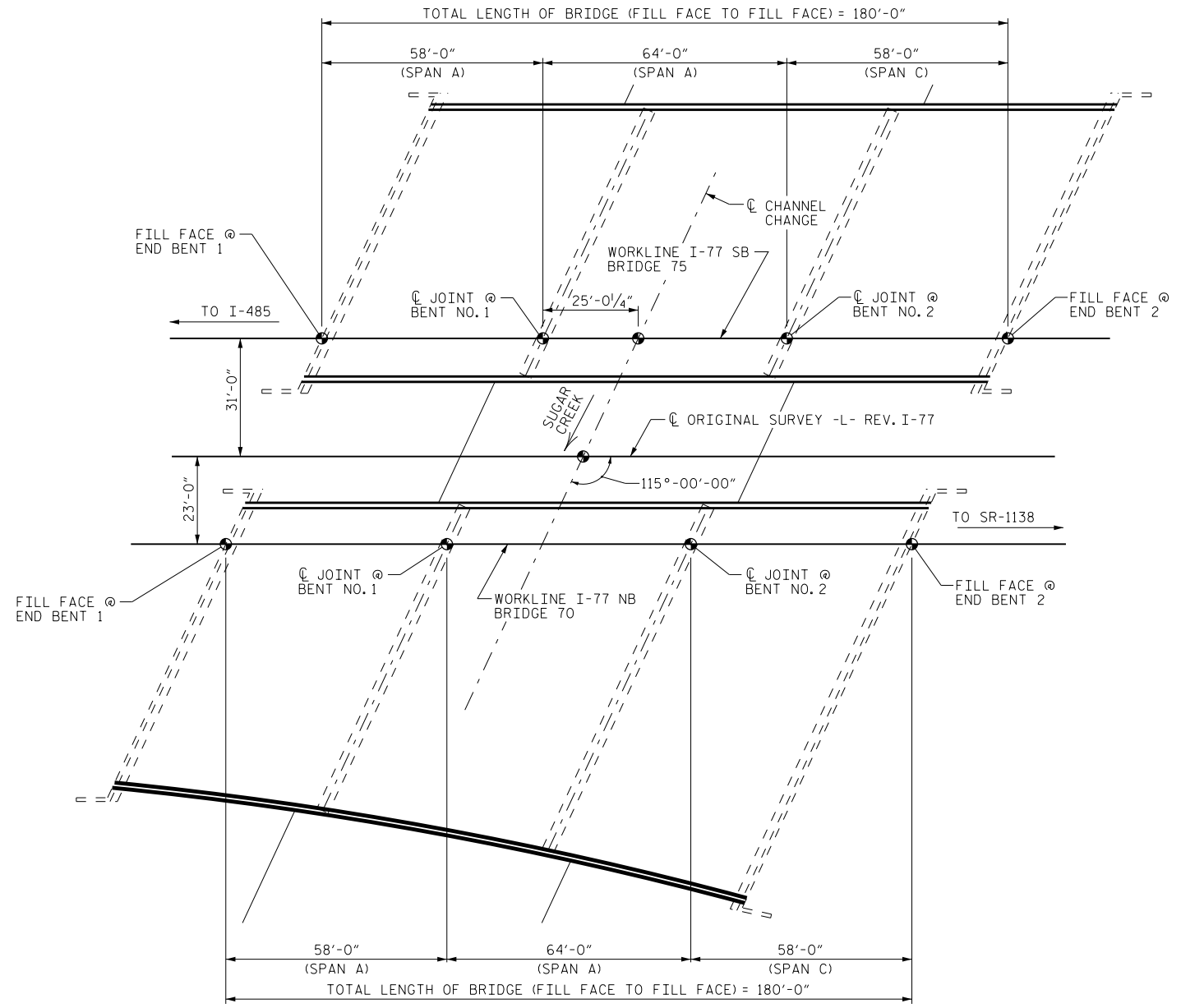


580
570
560
550
540



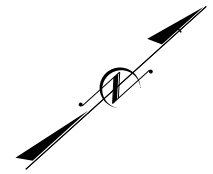
ELEVATION

SECTIONS AT BENTS AND END BENTS ARE AT RIGHT ANGLES

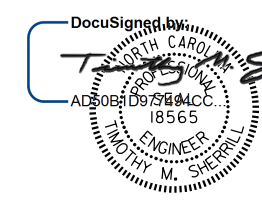


PLAN

COLUMNS AND FOOTINGS NOT SHOWN IN PLAN VIEW FOR CLARITY



PROJECT NO. I-5768
MECKLENBURG COUNTY
 BRIDGE NO.: 70 & 75



STATE OF NORTH CAROLINA
 DEPARTMENT OF TRANSPORTATION
 RALEIGH
GENERAL DRAWING
BRIDGE OVER SUGAR
CREEK ON I-77/US 21
BETWEEN I-485 AND
SR 1138

8/12/2016

DRAWN BY : D.V. JOYNER DATE : 5/2016
 CHECKED BY : W. SMITH DATE : 5/2016

DOCUMENT NOT CONSIDERED
 FINAL UNLESS ALL
 SIGNATURES COMPLETED

REVISIONS						SHEET NO.
NO.	BY:	DATE:	NO.	BY:	DATE:	
1			3			S-7
2			4			TOTAL SHEETS 21