

**NOTES**

UNLESS OTHERWISE REQUIRED IN THE CONTRACT DOCUMENTS, THE CONTRACTOR HAS THE OPTION TO USE AN ALTERNATE TO THE 2 BAR METAL RAIL. THE ALTERNATE RAIL SHALL MEET THE REQUIREMENTS OF THE AASHTO LRFD BRIDGE DESIGN SPECIFICATIONS AND MUST BE LISTED ON THE DEPARTMENT'S APPROVED PRODUCTS LIST (APL) UNDER "2 BAR METAL RAIL ALTERNATE". ADJUSTMENTS TO THE CONCRETE PARAPET WILL NOT BE ALLOWED.

THE METAL RAIL SHALL BE ALUMINUM AND IN ACCORDANCE WITH THE REQUIREMENTS OF THE GENERAL NOTES AND THE FOLLOWING SPECIFICATIONS.

**ALUMINUM RAILS**

MATERIAL FOR POSTS, BASES AND RAILS, EXPANSION BARS AND CLAMP BARS SHALL BE ASTM B-221 ALLOY 6061-T6. MATERIAL FOR RIVETS SHALL BE ASTM B316 ALLOY 6061-T6. RIVETS SHALL BE STANDARD BUTTON HEAD AND CONE POINT COLD DRIVEN AS PER DRAWING.

THE BASE OF RAIL POSTS, OR ANY OTHER ALUMINUM SURFACE IN CONTACT WITH CONCRETE SHALL BE THOROUGHLY COATED WITH AN ALUMINUM IMPREGNATED CAULKING COMPOUND OF APPROVED QUALITY.

MATERIAL FOR SHIMS TO BE ASTM B209 ALLOY 6061-T6.

**ANODIZING**

ALUMINUM FOR POSTS, BASES, RAILS, EXPANSION BARS, CLAMP BARS, RIVETS, AND SHIMS SHALL BE ANODIZED DARK BROWN. FOR ANODIZED 2 BAR METAL RAIL, SEE SPECIAL PROVISIONS.

ANY DAMAGE TO THE ANODIZED SURFACE OF THE RAIL OR COMPONENTS DURING THE CONSTRUCTION SHALL BE REPAIRED ACCORDING TO THE MANUFACTURER'S INSTRUCTIONS AT THE DIRECTION OF THE ENGINEER AND AT THE CONTRACTOR'S EXPENSE.

AFTER A SHADE OF BROWN HAS BEEN SELECTED FOR THE RAILING, THE CONTRACTOR SHALL SUBMIT A SAMPLE OF COMPATIBLE EXTERIOR ACRYLIC HOUSE PAINT TO THE ENGINEER. THIS PAINT SHALL MATCH THE ANODIZED RAIL COLOR AS CLOSELY AS POSSIBLE. AFTER ERECTION OF THE ANODIZED ALUMINUM RAILING, ALL EXPOSED ANCHOR BOLTS, NUTS, WASHERS, MACHINE SCREWS, CAP SCREWS, BOLTS, ATTACHMENT BRACKETS, HOLD DOWN PLATES, RAIL CAPS AND BUILT UP ANGLES SHALL BE COATED WITH TWO COATS OF THIS PAINT.

**GENERAL NOTES**

RAILING SHALL BE CONTINUOUS FROM LAMP PEDESTAL TO LAMP PEDESTAL OF BRIDGE. EACH JOINT IN RAIL LENGTH SHALL BE SPLICED AS DETAILED. PANEL LENGTHS OF RAIL SHALL BE ATTACHED TO A MINIMUM OF THREE POSTS.

FOR END OF RAIL TO CLEAR FACE OF CONCRETE LAMP PEDESTAL DIMENSION, SEE "END OF RAIL DETAILS" SHEET.

CAP SCREWS SHALL BE ASTM F593 ALLOY 305 STAINLESS STEEL. WASHERS SHALL MEET THE REQUIREMENTS OF ASTM F844 EXCEPT THEY SHALL BE MADE FROM ALLOY 304 STAINLESS STEEL.

CERTIFIED MILL REPORTS ARE REQUIRED FOR RAILS AND POSTS. SHOP INSPECTION IS NOT REQUIRED.

METAL RAIL POSTS SHALL BE SET NORMAL TO CURB GRADE.

METHOD OF MEASUREMENT FOR METAL RAILS: FOR LENGTH OF METAL RAILS TO BE PAID FOR, SEE THE STANDARD SPECIFICATIONS.

CURVED RAIL USAGE: WHERE RAILS ARE TO BE USED ON BRIDGES ON HORIZONTAL AND/OR VERTICAL CURVATURE THE CONTRACTOR MAY, AT HIS OPTION, HAVE THE REQUIRED CURVATURE IN THE RAIL FORMED IN THE SHOP OR IN THE FIELD. IN EITHER EVENT, THE RAIL SHALL CONFORM WITHOUT BUCKLING OR KINKING TO THE REQUIRED CURVATURE IN A UNIFORM MANNER ACCEPTABLE TO THE ENGINEER.

TO INSURE FUTURE IDENTIFICATION OF THE FABRICATOR, A PERMANENT IDENTIFYING MARK SHALL BE PLACED ON EACH POST. THE METHOD OF MARKING AND LOCATION SHALL BE SUCH THAT IT DOES NOT DETRACT FROM THE APPEARANCE OF THE POST, BUT REMAINS VISIBLE AFTER RAIL PLACEMENT.

SHIMS SHALL BE USED AS NECESSARY FOR POST ALIGNMENT.

ALLOY 6351-T5 MAY BE SUBSTITUTED FOR ALLOY 6061-T6 WHERE APPLICABLE.

MINOR VARIATIONS IN DETAILS OF METAL RAIL WILL BE CONSIDERED. DETAILS OF SUCH VARIATIONS, IF DESIRED, SHALL BE SUBMITTED FOR APPROVAL.

GROOVED CONTRACTION JOINTS, 1/2" IN DEPTH, SHALL BE TOOLED IN ALL EXPOSED FACES OF THE PARAPET AND IN ACCORDANCE WITH ARTICLE 825-10(B) OF THE STANDARD SPECIFICATIONS. A CONTRACTION JOINT SHALL BE LOCATED AT EACH THIRD POINT BETWEEN PARAPET EXPANSION JOINTS. ONLY ONE CONTRACTION JOINT IS REQUIRED AT MIDPOINT OF PARAPET SEGMENTS LESS THAN 20 FEET IN LENGTH AND NO CONTRACTION JOINTS ARE REQUIRED FOR THOSE SEGMENTS LESS THAN 10 FEET IN LENGTH.

RAIL CAPS: RAIL CAPS SHALL MEET THE REQUIREMENTS OF ASTM A570 FOR GRADE 33 OR A611 FOR GRADE C AND SHALL BE GALVANIZED IN ACCORDANCE WITH AASHTO M111.

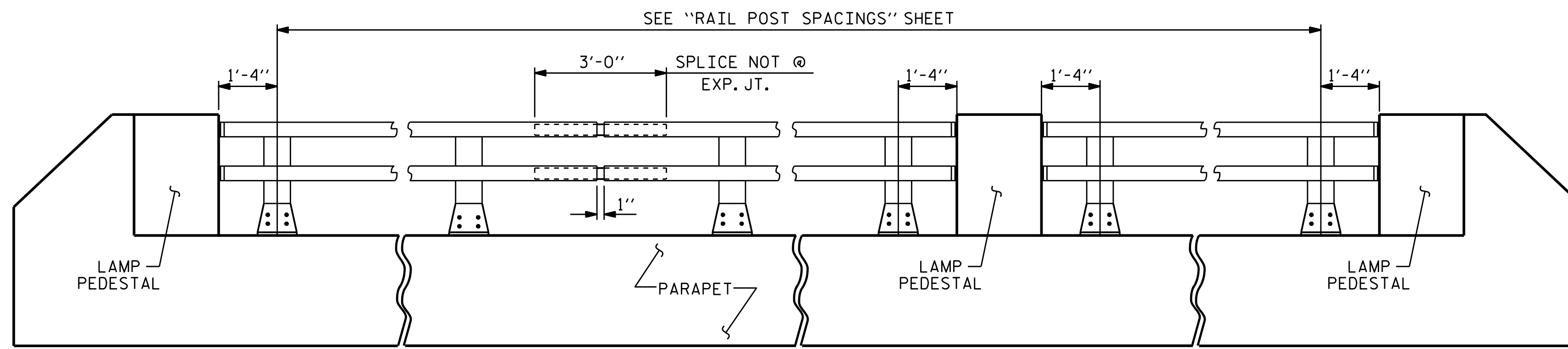
PAY LENGTH = 472.75 LIN. FT. PROJECT NO. B-5125  
 MACON COUNTY  
 STATION: 13+25.89 -L-

SHEET 1 OF 2

STATE OF NORTH CAROLINA  
 DEPARTMENT OF TRANSPORTATION  
 RALEIGH

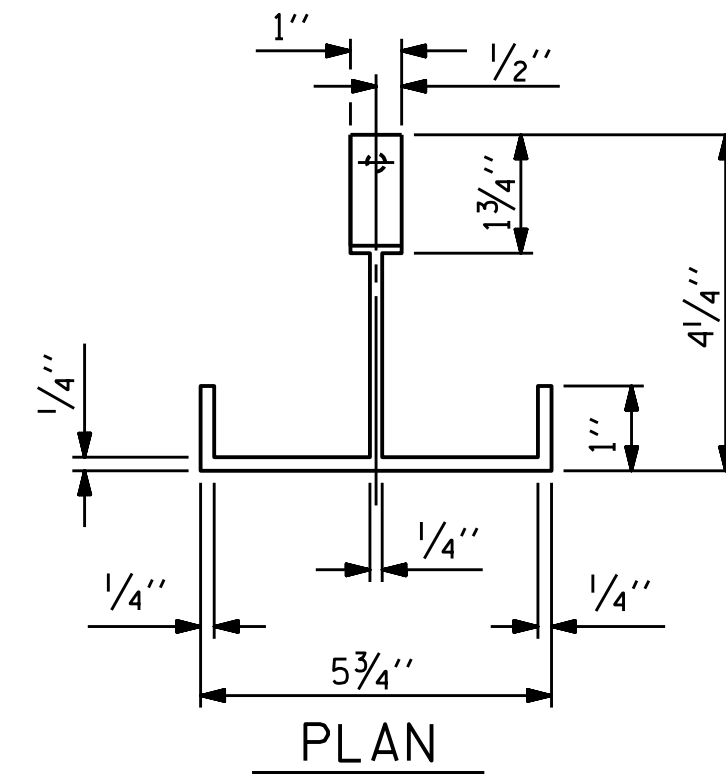
ANODIZED  
 2 BAR METAL RAIL

7/1/2016  
 NORTH CAROLINA PROFESSIONAL ENGINEERS SEAL 20125  
 MARSHALL G. CHEEK JR.  
 65492REBA38405

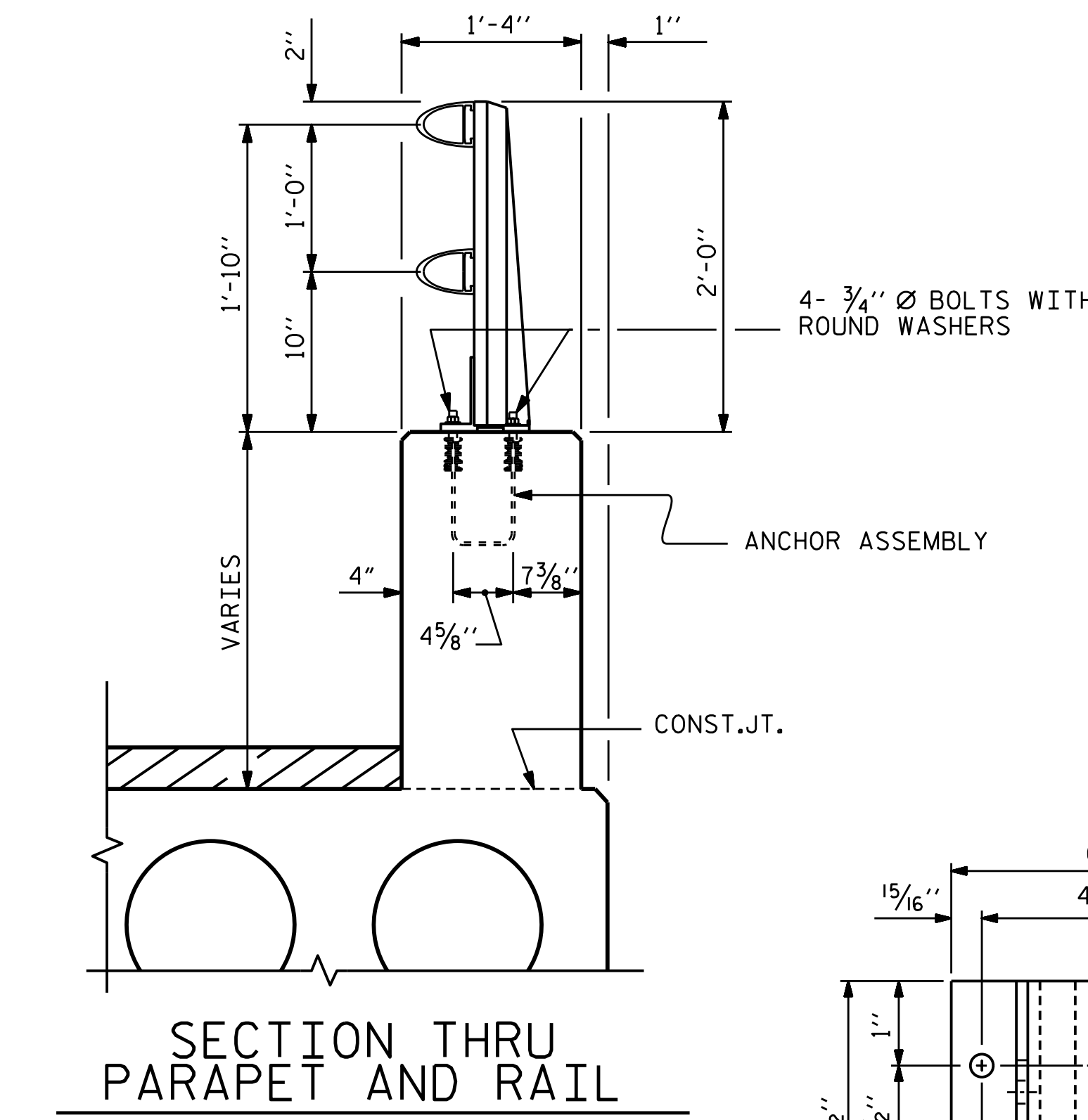


**ELEVATION**

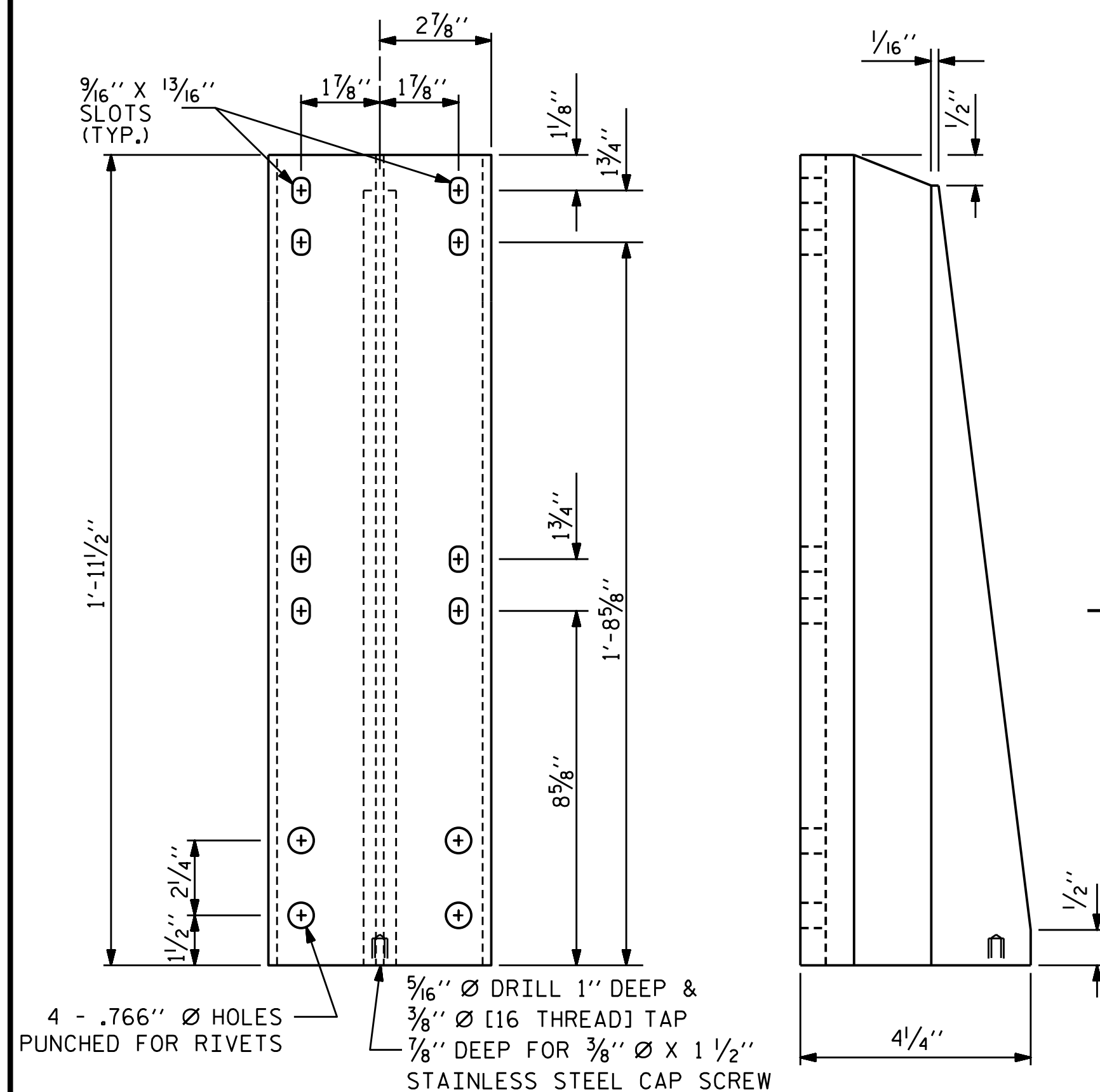
NOTE : FOR ATTACHMENT OF METAL RAIL TO LAMP PEDESTAL, SEE "END OF RAIL DETAILS" SHEET.



**PLAN**



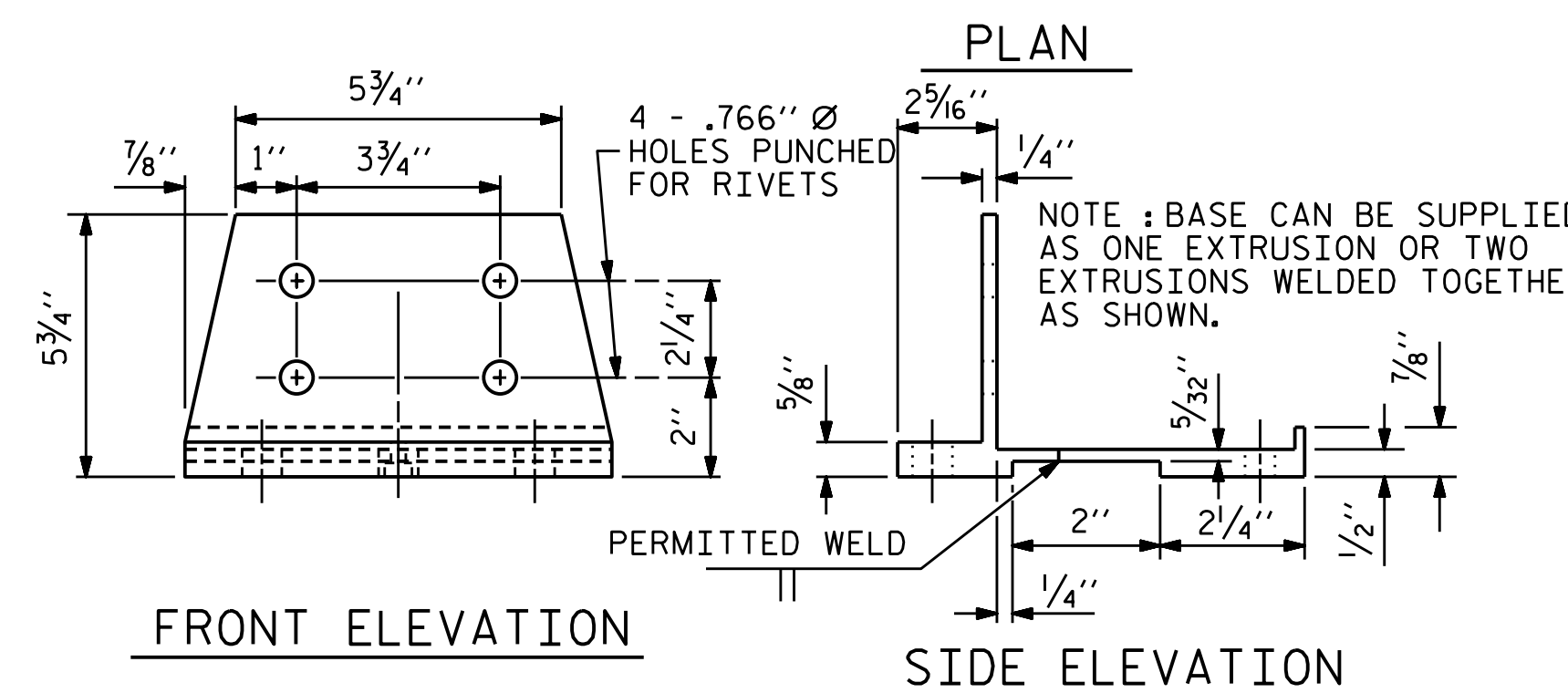
**SECTION THRU PARAPET AND RAIL**



**FRONT ELEVATION**

**SIDE ELEVATION**

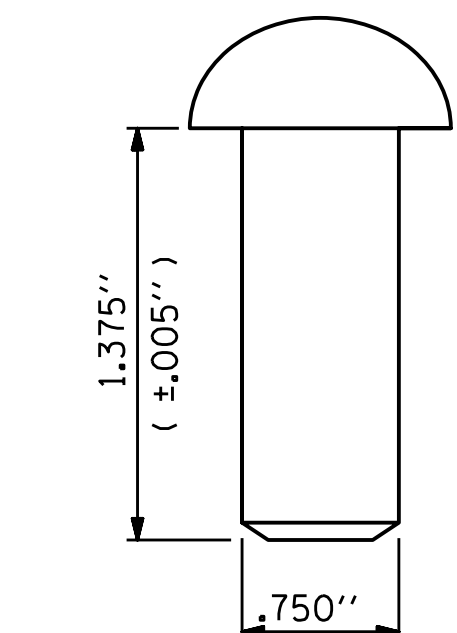
**DETAILS OF POST**



**FRONT ELEVATION**

**SIDE ELEVATION**

**POST BASE DETAILS**



**RIVET DETAIL**

ASSEMBLED BY : D. HODGE	DATE : 12/15
CHECKED BY : M.G. CHEEK	DATE : 4/16
DRAWN BY : EEM 6/94	REV. 5/1/06 TLA/GM
CHECKED BY : RGW 6/94	REV. 10/1/11 MAA/GM
	REV. 6/13 MAA/GM

DOCUMENT NOT CONSIDERED FINAL UNLESS ALL SIGNATURES COMPLETED

REVISIONS						SHEET NO. S-21
NO.	BY:	DATE:	NO.	BY:	DATE:	
1			3			TOTAL SHEETS 43
2			4			

\*\*\*\*\*SYSTEM\*\*\*\*\*  
 \*\*\*\*\*SDGN\*\*\*\*\*  
 \*\*\*\*\*USER\*\*\*\*\*