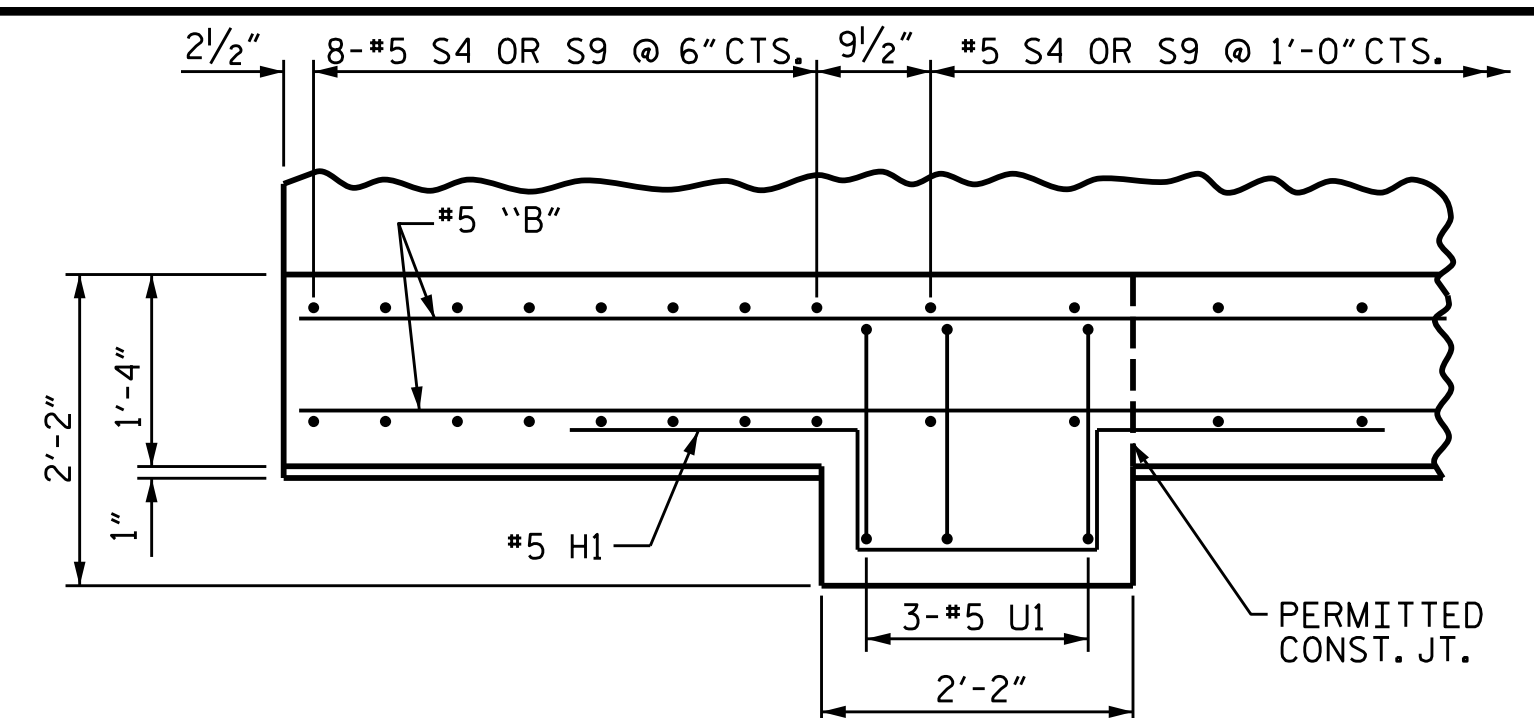
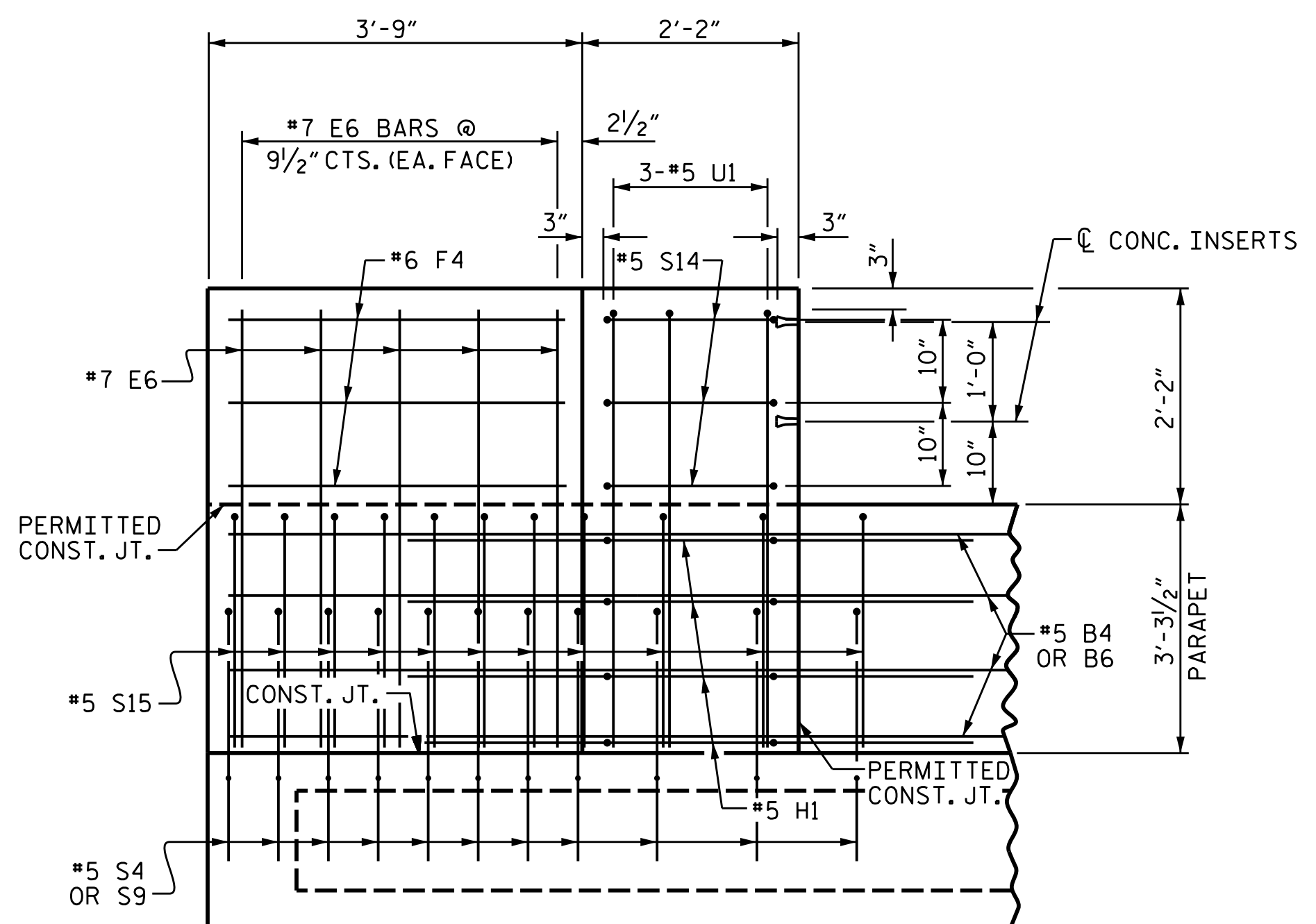


PLAN OF END POST

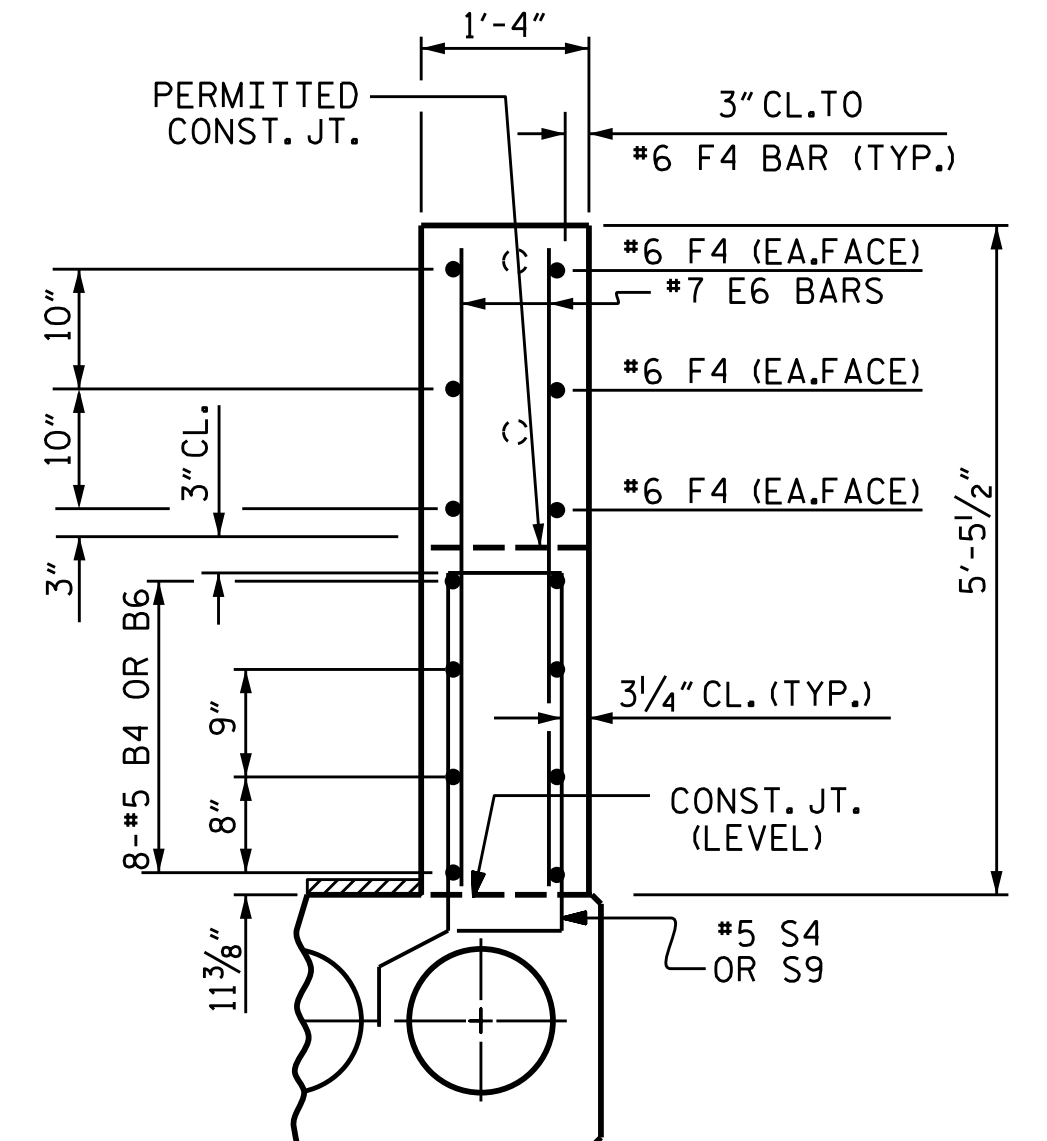


PLAN OF PARAPET & LAMP PEDESTAL

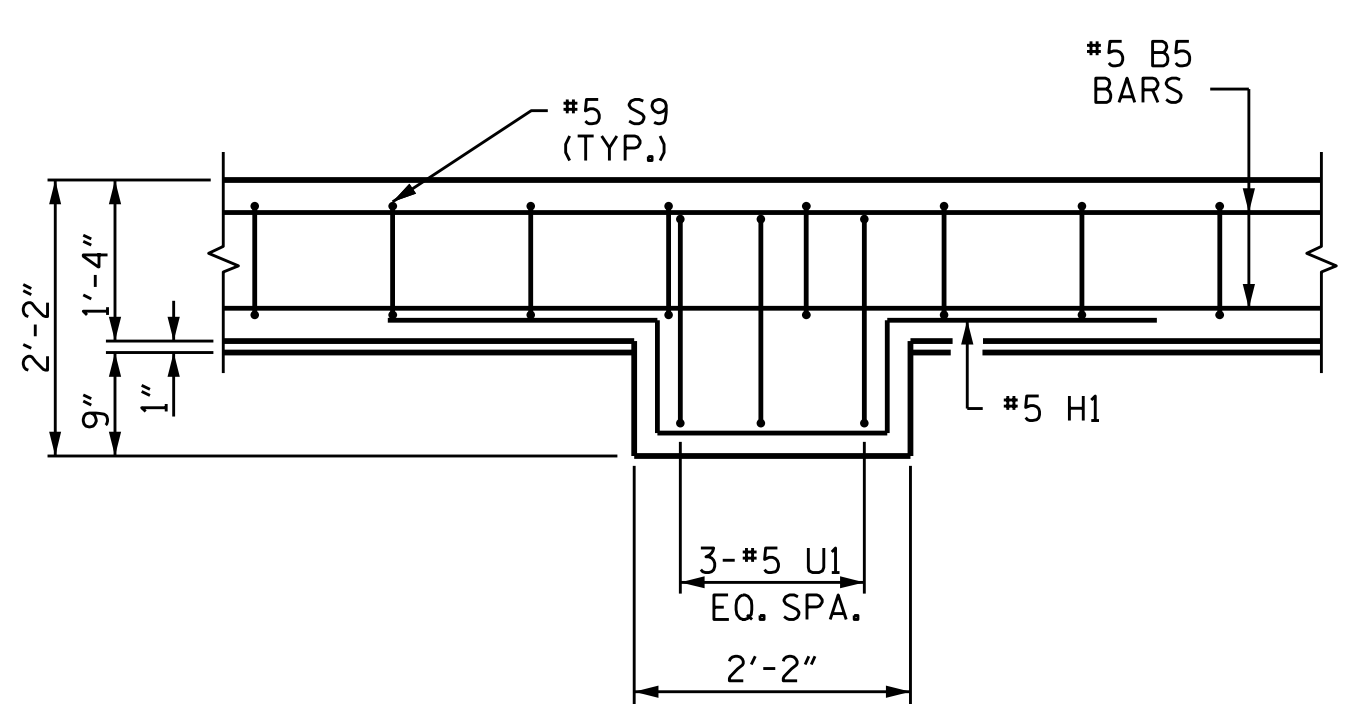
PARAPET AT END BENT No. 1 SHOWN.  
PARAPET AT END BENT No. 2 SIMILAR



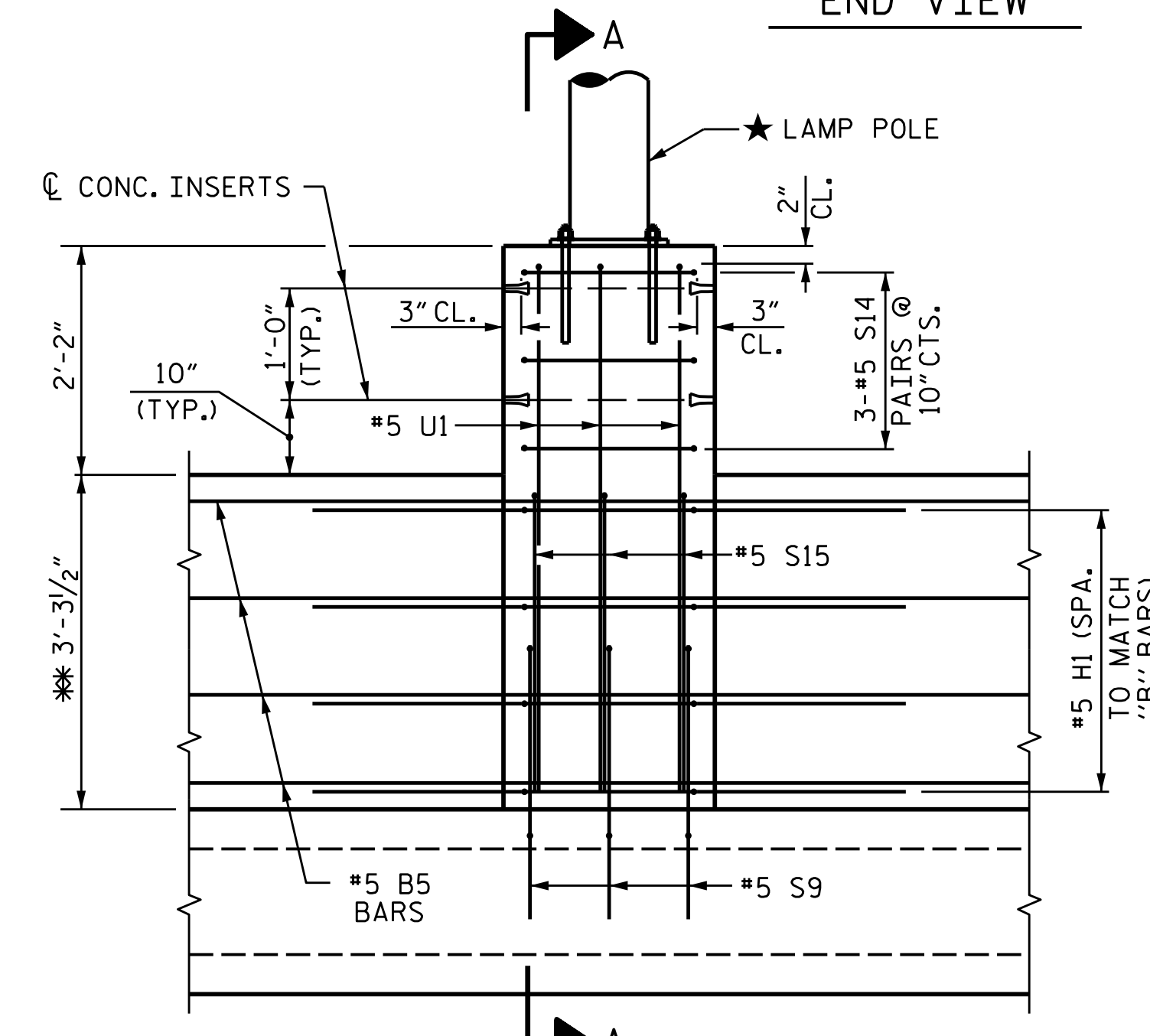
ELEVATION



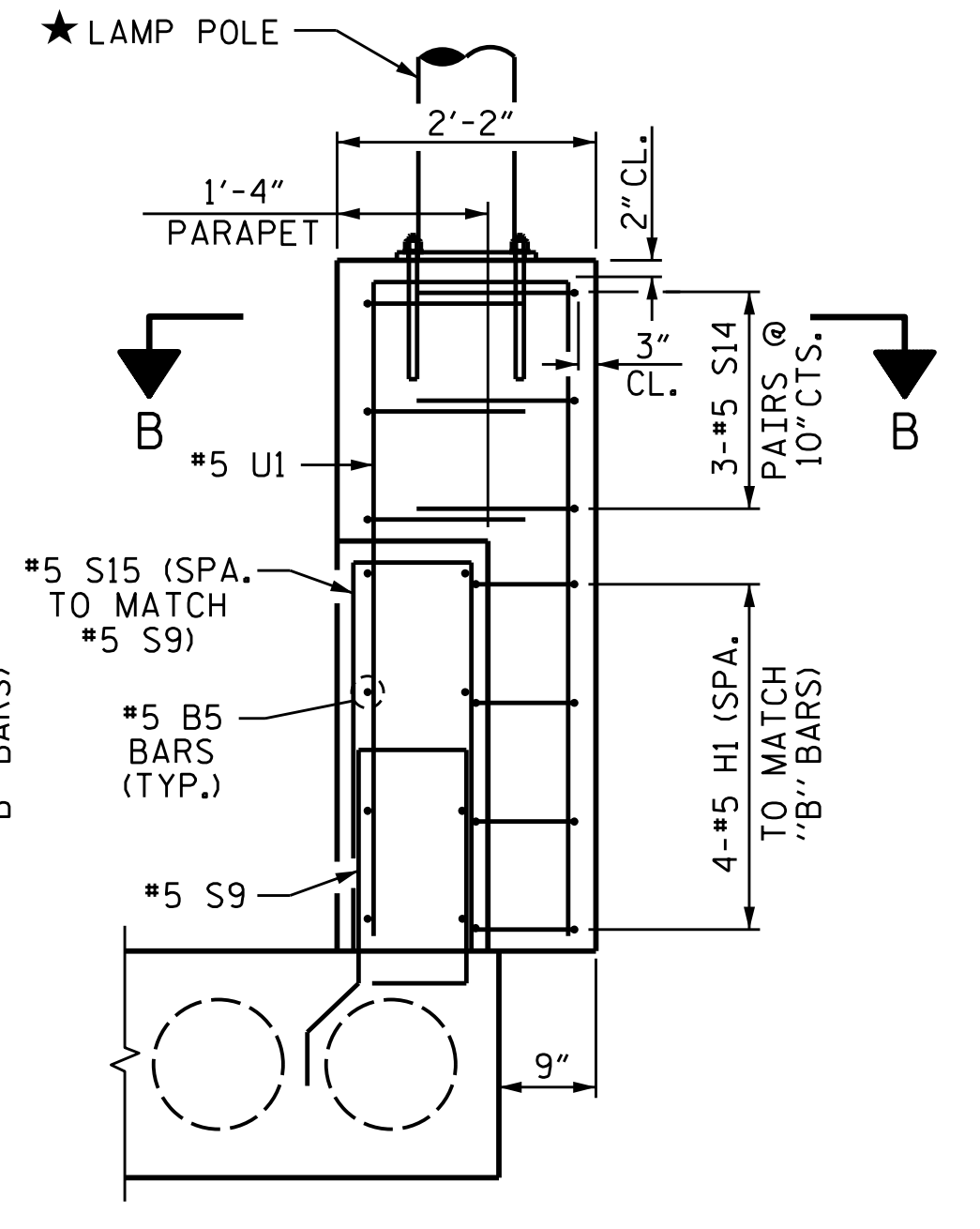
END VIEW



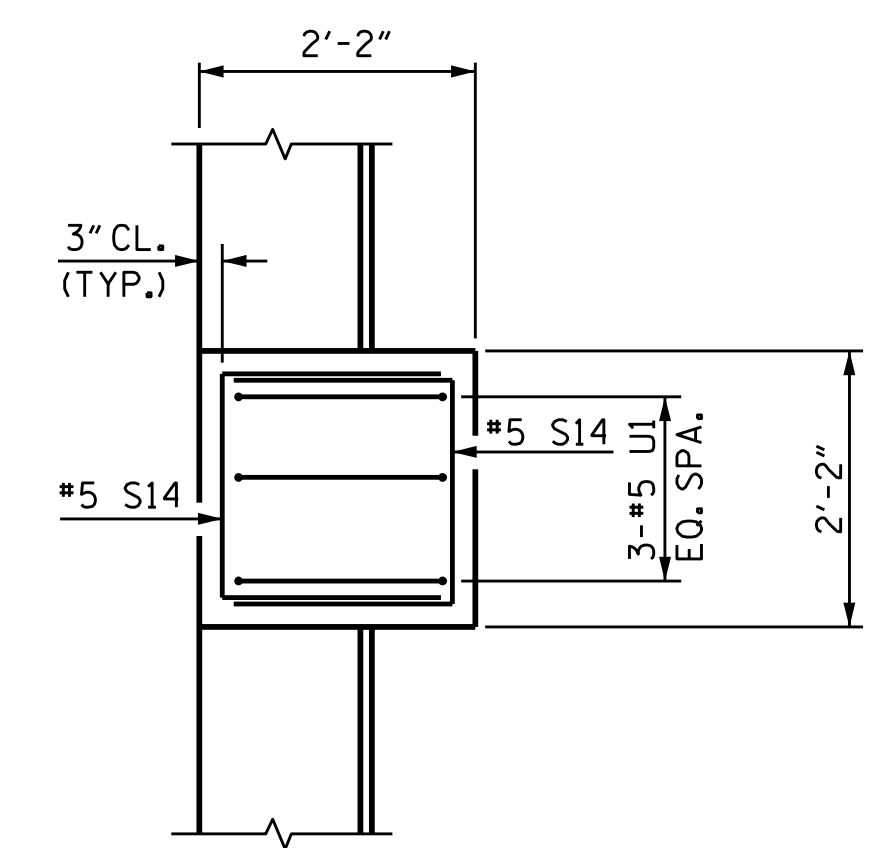
PLAN THRU PARAPET



ELEVATION  
(FRONT VIEW)



SECTION A-A



SECTION B-B

\*\* THE MAXIMUM PARAPET HEIGHT IS SHOWN. THE HEIGHT OF THE PARAPET VARIES WHILE THE TOP OF THE PARAPET FOLLOWS THE PROFILE OF THE CONCRETE WEARING SURFACE.

LAMP PEDESTAL DETAILS

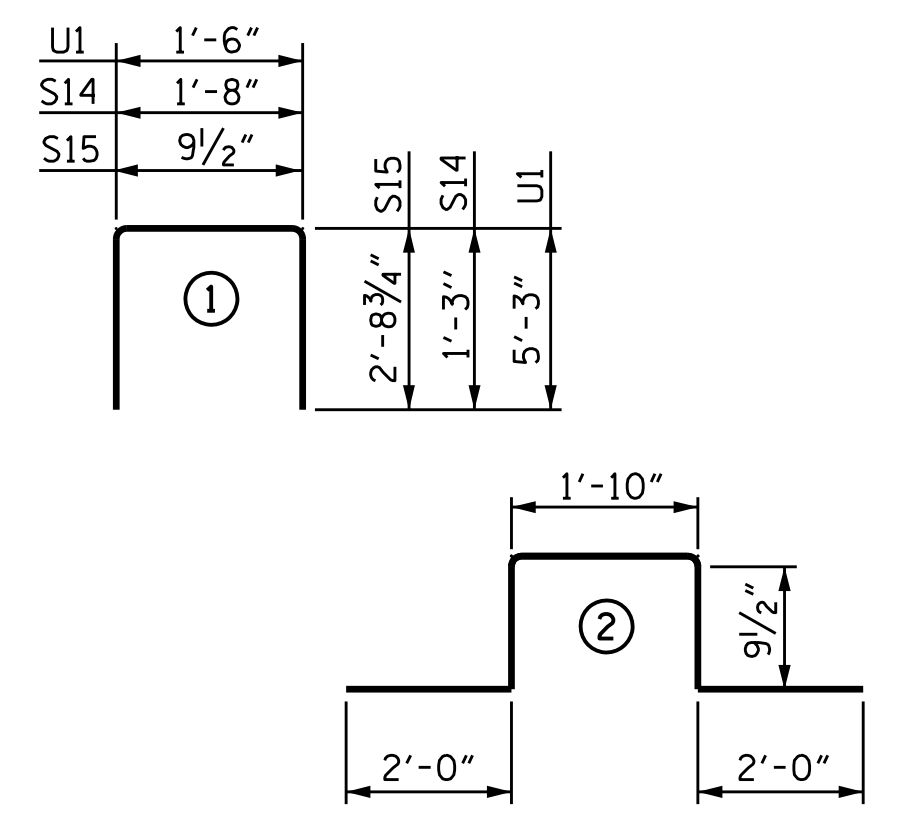
(★ LAMP POLE & ANCHORAGE TO BE PROVIDED BY OTHERS.)

BILL OF MATERIAL FOR  
1'-4" X 3'-3 1/2" PARAPET,  
3 LAMP PEDESTALS, & 2 END POSTS

BAR	NO.	SIZE	TYPE	LENGTH	WEIGHT
* B4	16	#5	STR	19'-7"	327
* B5	48	#5	STR	24'-7"	1231
* B6	16	#5	STR	29'-7"	494
* E6	20	#7	STR	5'-0"	204
* F4	12	#6	STR	3'-4"	60
* H1	12	#5	2	7'-3"	91
* S14	18	#5	1	4'-2"	78
* S15	282	#5	1	6'-3"	1838
* U1	9	#5	1	12'-0"	113

* EPOXY COATED REINFORCING STEEL	LBS.	4436
CLASS AA CONCRETE	CU.YDS.	42.9
1'-4" X 3'-3 1/2" CONCRETE PARAPET	250.38 LIN. FT.	
ARCHITECTURAL CONCRETE SURFACE TREATMENT	1535 SQ. FT.	

BAR TYPES

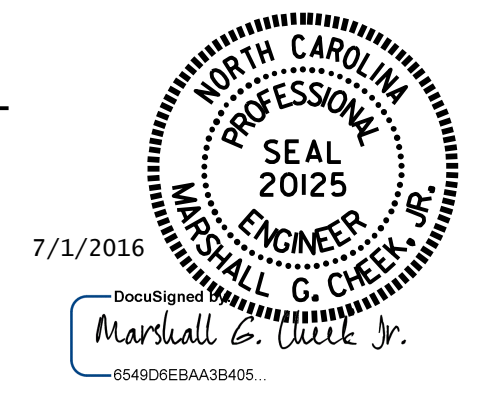


ALL BAR DIMENSIONS ARE OUT TO OUT

PROJECT NO. B-5125  
MACON COUNTY  
STATION: 13+25.89 -L-

SHEET 3 OF 3

STATE OF NORTH CAROLINA  
DEPARTMENT OF TRANSPORTATION  
RALEIGH  
1'-4" X 3'-3 1/2"  
PARAPET,  
END POSTS  
AND  
LAMP PEDESTALS



DRAWN BY :	W.J. HARRIS	DATE :	4/16
CHECKED BY :	M.G. CHEEK	DATE :	4/29/16
DESIGN ENGINEER OF RECORD:	W.J. HARRIS	DATE :	5/16

DOCUMENT NOT CONSIDERED  
FINAL UNLESS ALL  
SIGNATURES COMPLETED

REVISIONS						SHEET NO.
NO.	BY:	DATE:	NO.	BY:	DATE:	S-18
1			3			TOTAL SHEETS
2			4			43