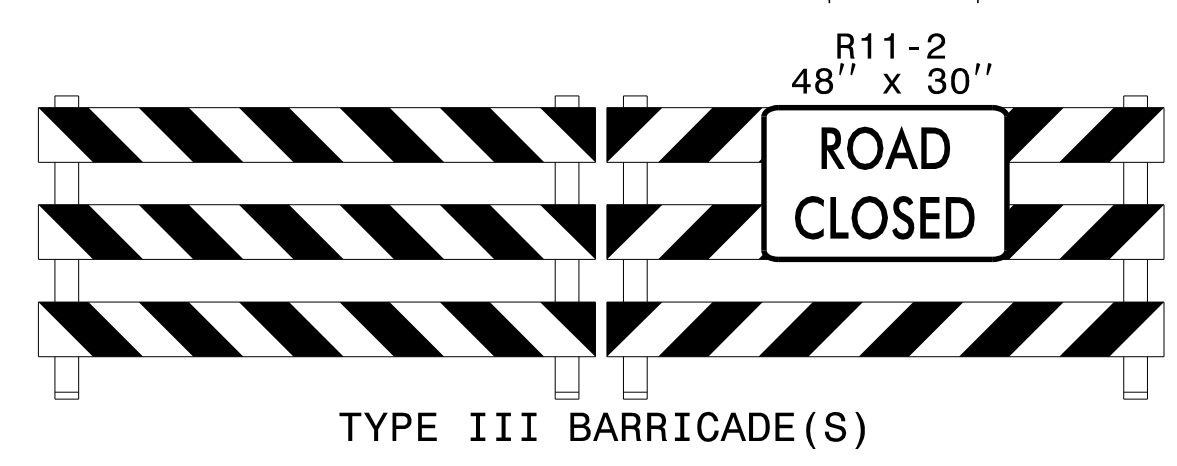
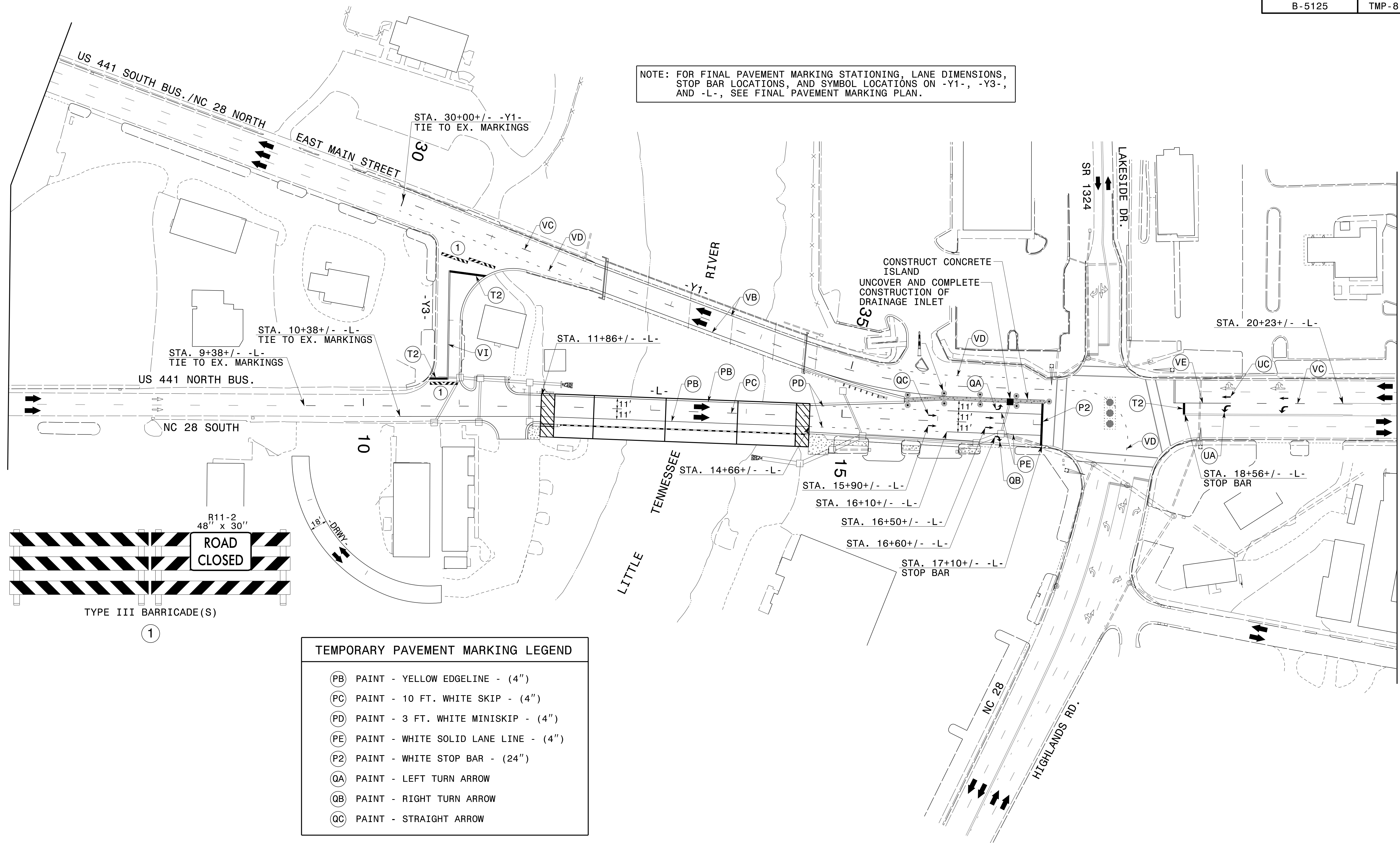


NOTE: FOR FINAL PAVEMENT MARKING STATIONING, LANE DIMENSIONS, STOP BAR LOCATIONS, AND SYMBOL LOCATIONS ON -Y1-, -Y3-, AND -L-, SEE FINAL PAVEMENT MARKING PLAN.



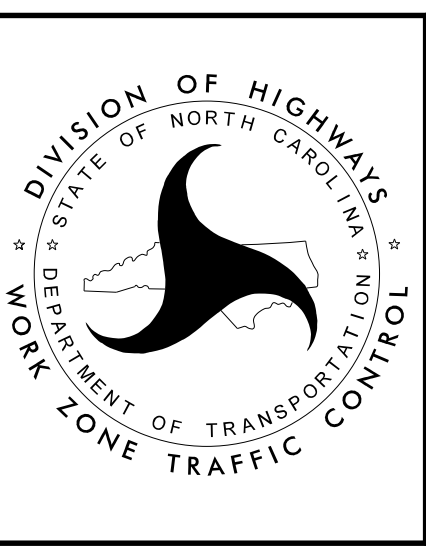
TEMPORARY PAVEMENT MARKING LEGEND	
(PB)	PAINT - YELLOW EDGELINE - (4")
(PC)	PAINT - 10 FT. WHITE SKIP - (4")
(PD)	PAINT - 3 FT. WHITE MINISKIP - (4")
(PE)	PAINT - WHITE SOLID LANE LINE - (4")
(P2)	PAINT - WHITE STOP BAR - (24")
(QA)	PAINT - LEFT TURN ARROW
(QB)	PAINT - RIGHT TURN ARROW
(QC)	PAINT - STRAIGHT ARROW

REFER TO RSD NOS. 1205.01, 1205.02, 1205.04, 1205.05, 1205.08, 1250.01, AND 1251.01 FOR PLACEMENT OF TEMPORARY PAVEMENT MARKINGS AND MARKERS UNLESS NOTED OTHERWISE.

APPROVED: *Lori D. Stoucho*  
902CB181918148C...

DATE: 6/3/2016

**DOCUMENT NOT CONSIDERED FINAL  
UNLESS ALL SIGNATURES COMPLETED**



**PHASE III DETAILS**

6/3/2016 p:\tpp\projects-b\5125\traffic\trafficcontrol\top\B5125.ITC.PH3.TMP08.dgn User:scodts