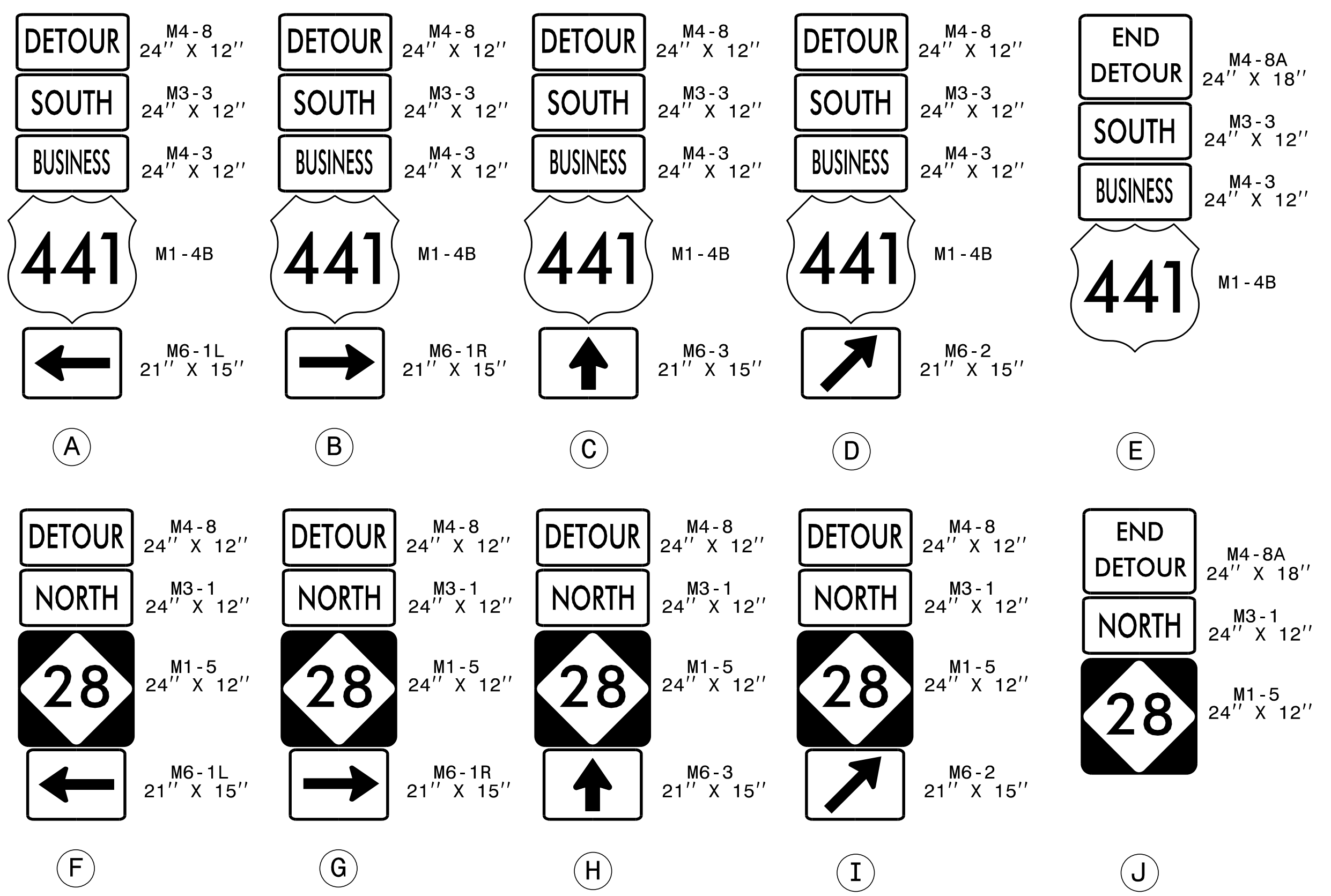
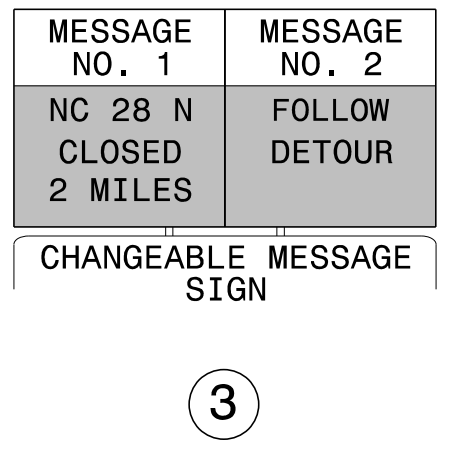
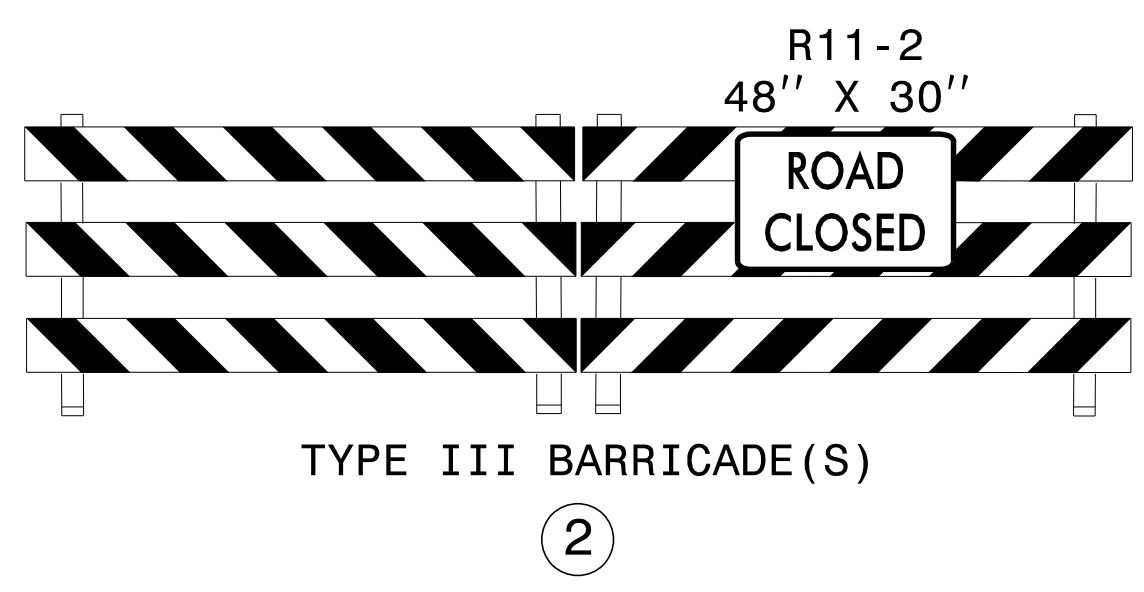
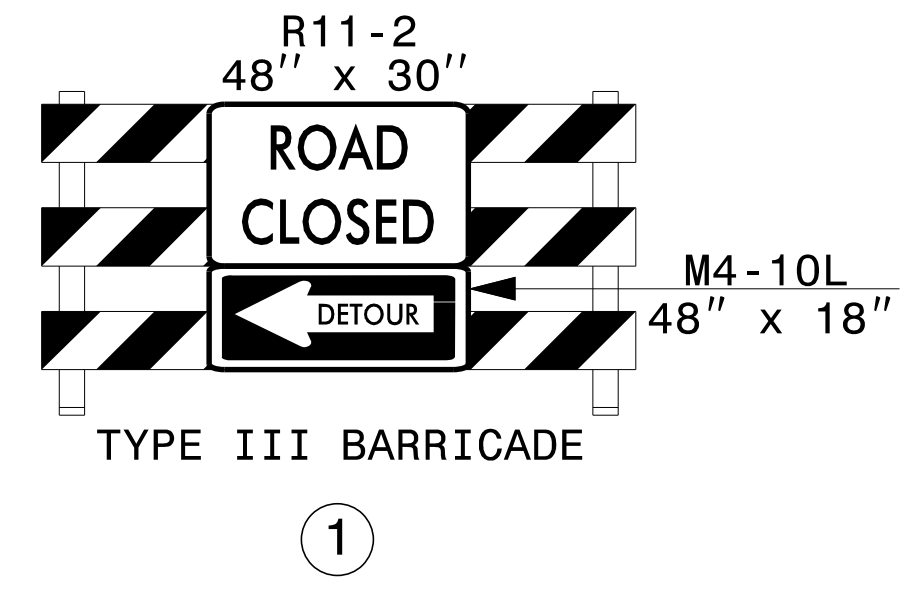
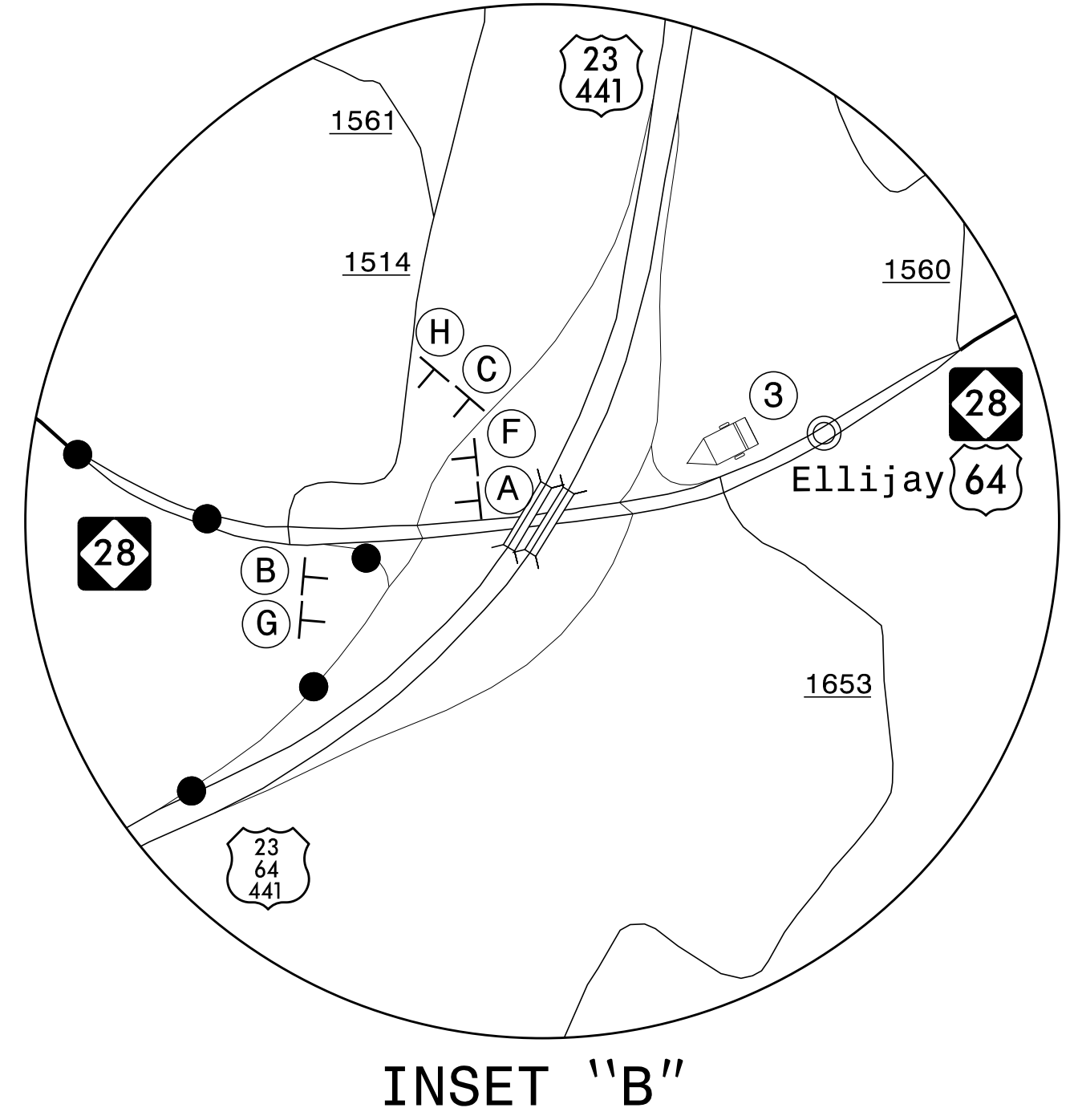
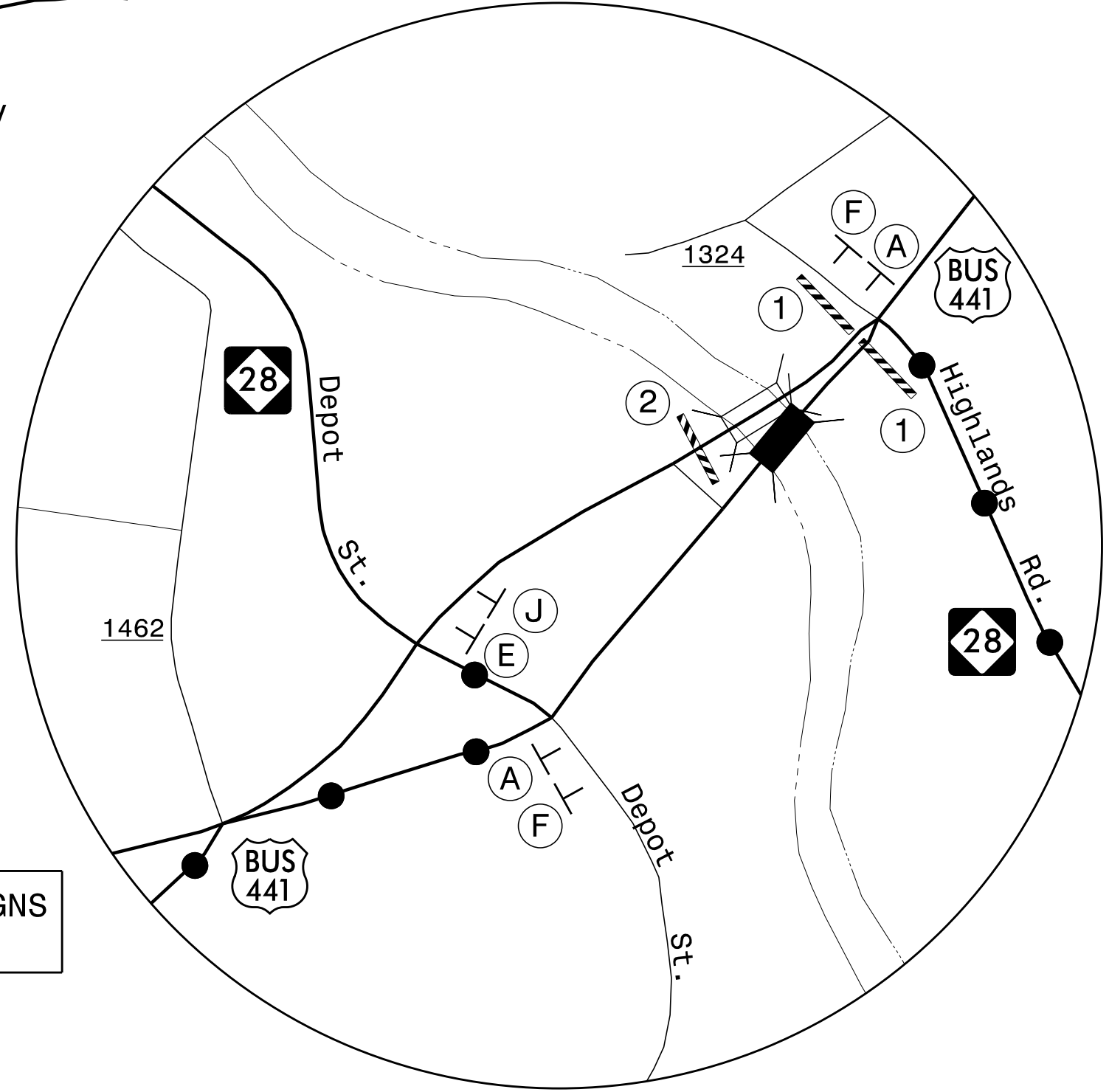


DETOUR ROUTE
US 441 SOUTH BUS.
AND NC 28 NORTH

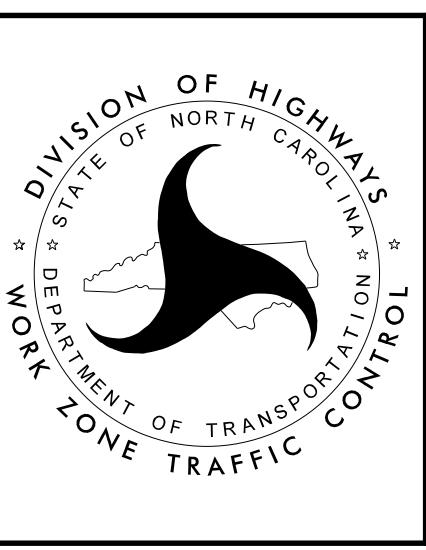


NOTE 1: CONTRACTOR SHALL PLACE CHANGEABLE MESSAGE SIGNS AND MESSAGES AS DIRECTED BY THE ENGINEER.



APPROVED: *Lori D. Stoucho*
DATE: 6/3/2016

DOCUMENT NOT CONSIDERED FINAL UNLESS ALL SIGNATURES COMPLETED



**PHASE I
DETOUR ROUTE
US 441 BUSINESS
(SOUTH)
AND NC 28
(NORTH)**