

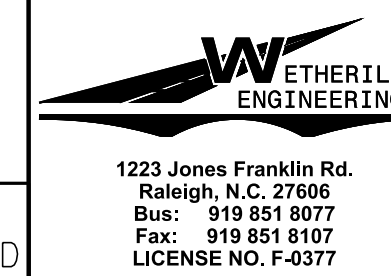
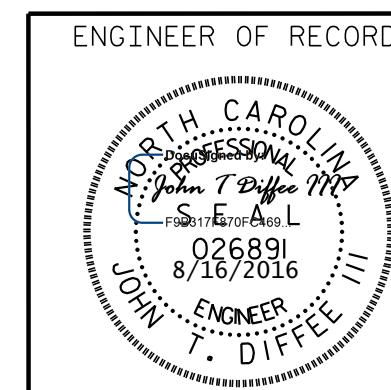
PROJECT NO. R-5769
JOHNSTON COUNTY
 STATION: 33+26.33 -L-

PLAN OF SPAN A

FOR DETAILS OF INTERMEDIATE DIAPHRAGMS, SEE "PRESTRESSED CONCRETE GIRDER" SHEET.

FOR CONCRETE BARRIER RAIL DETAILS AND REINFORCING STEEL, SEE "CONCRETE BARRIER RAIL" SHEETS.

* THESE BARS ARE TO MATCH SPACING OF THE #4 V1 BARS IN END BENT.



STATE OF NORTH CAROLINA
 DEPARTMENT OF TRANSPORTATION
 RALEIGH
 SUPERSTRUCTURE
 PLAN OF SPAN

DRAWN BY : D. HODGE DATE : 3/16
 CHECKED BY : G.M. GILLAND DATE : 3/16

DOCUMENT NOT CONSIDERED FINAL
 UNLESS ALL SIGNATURES COMPLETED

REVISIONS						SHEET NO.	
NO.	BY:	DATE:	NO.	BY:	DATE:	S-7	
1			3			TOTAL SHEETS	
2			4			23	

P:\2016\AR-5769\Structures\DMR5769_SD_STR_L_PS.dgn
 8/16/2016 9:42:27 AM