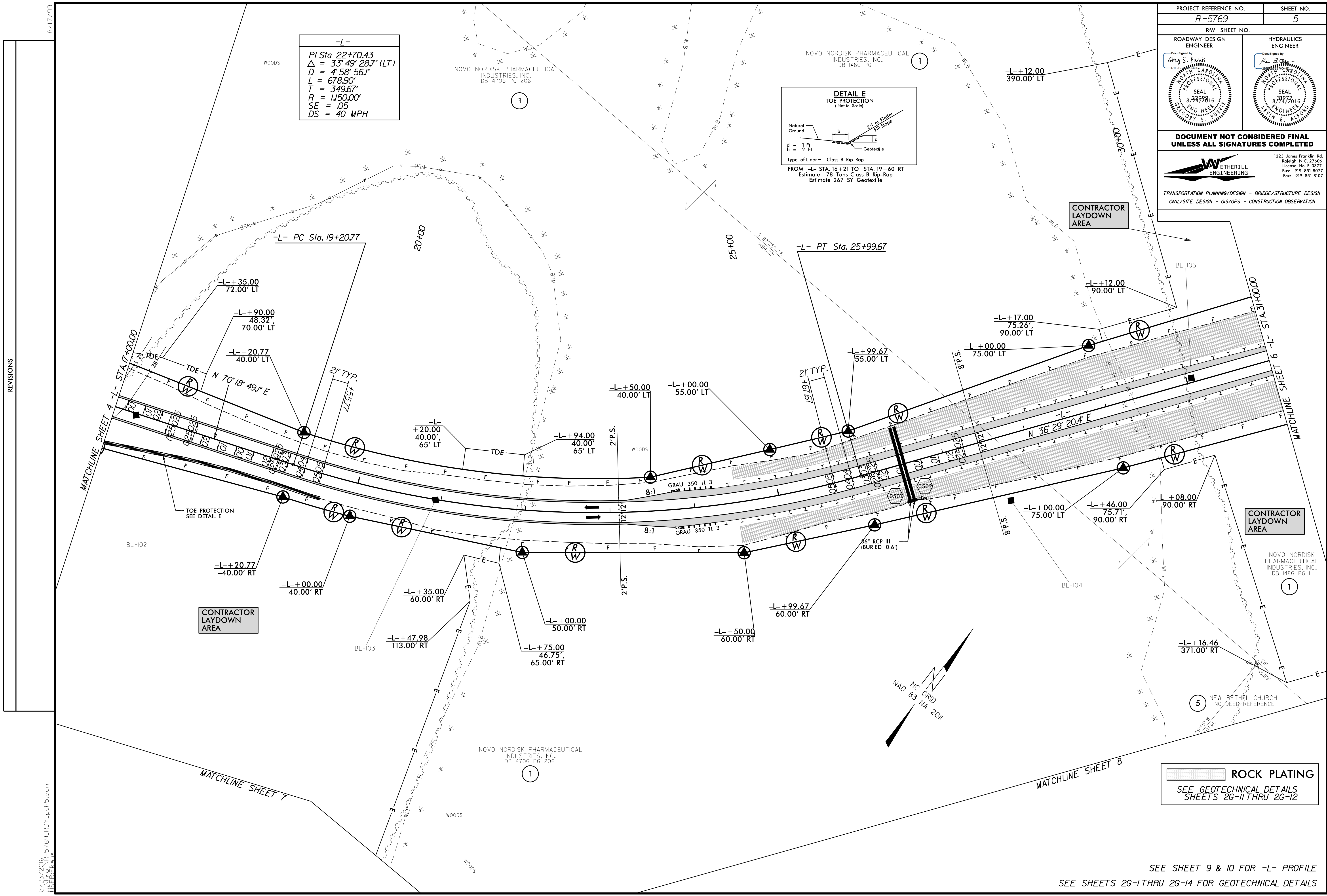
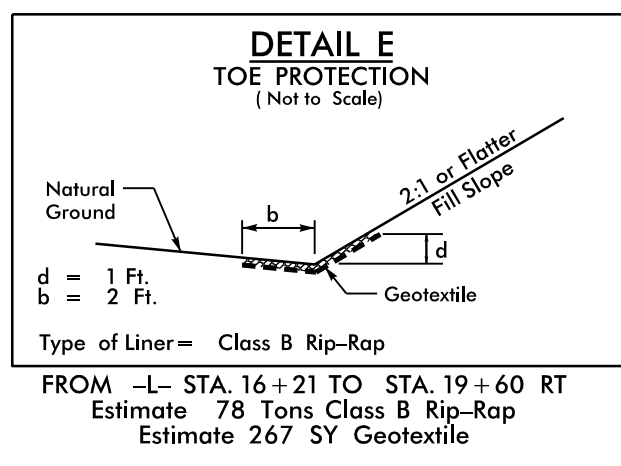


PROJECT REFERENCE NO. R-5769		SHEET NO. 5	
RW SHEET NO.			
ROADWAY DESIGN ENGINEER Decomposed by: <i>Greg S. Purvis</i> PROFESSIONAL SEAL 8/22/2016 GREGORY S. PURVIS		HYDRAULICS ENGINEER Decomposed by: <i>Lee B. ...</i> PROFESSIONAL SEAL 8/24/2016 LEE B. ...	
DOCUMENT NOT CONSIDERED FINAL UNLESS ALL SIGNATURES COMPLETED			
		1223 Jones Franklin Rd. Raleigh, N.C. 27606 License No. F-0377 Bus: 919 851 8077 Fax: 919 851 8107	
TRANSPORTATION PLANNING/DESIGN - BRIDGE/STRUCTURE DESIGN CIVIL/SITE DESIGN - GIS/GPS - CONSTRUCTION OBSERVATION			

-L-
 PI Sta 22+70.43
 $\Delta = 33^{\circ}49'28.7" (LT)$
 $D = 4'58"56.1"$
 $L = 678.90'$
 $T = 349.67'$
 $R = 1150.00'$
 $SE = .05$
 $DS = 40 \text{ MPH}$



ROCK PLATING
 SEE GEOTECHNICAL DETAILS
 SHEETS 26-1 THRU 26-12

SEE SHEET 9 & 10 FOR -L- PROFILE
 SEE SHEETS 26-1 THRU 26-14 FOR GEOTECHNICAL DETAILS

REVISIONS

8/23/2016 R-5769.RDY -pat5.dgn
 IIS:REK:ms