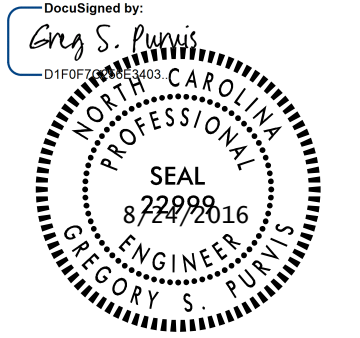

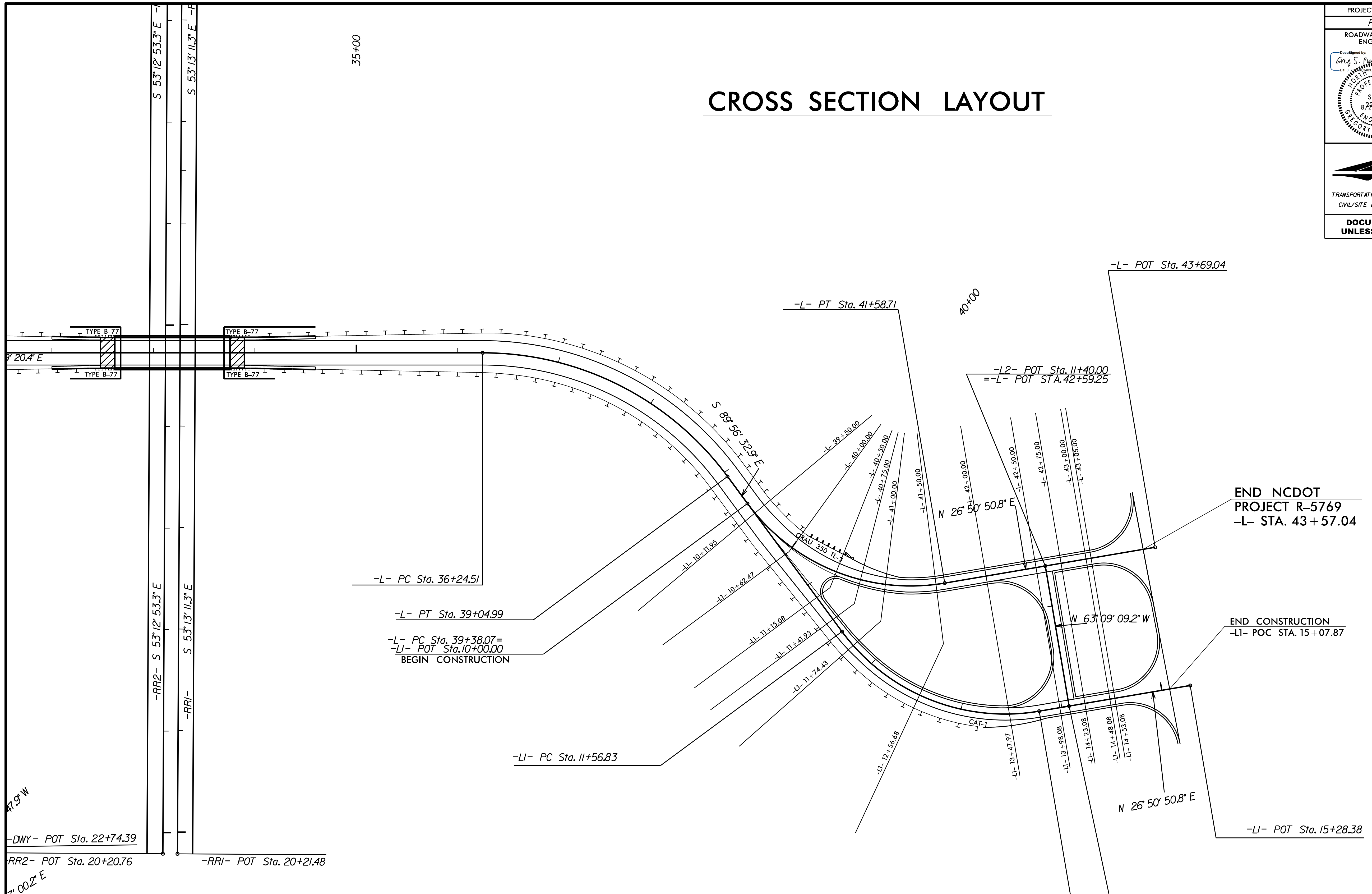


PROJECT REFERENCE NO. <i>R-5769</i>	SHEET NO. <i>2B-1</i>
ROADWAY DESIGN ENGINEER <i>Greg S. Parris</i>	
	
<small>TRANSPORTATION PLANNING/DESIGN - BRIDGE/STRUCTURE DESIGN CIVIL/SITE DESIGN - GIS/GPS - CONSTRUCTION OBSERVATION</small>	
<b>DOCUMENT NOT CONSIDERED FINAL UNLESS ALL SIGNATURES COMPLETED</b>	

# CROSS SECTION LAYOUT



-L-		-LI-
PI Sta 37+75.94	PI Sta 40+61.13	PI Sta 12+79.90
$\Delta = 53^\circ 34' 06.6''$ (RT)	$\Delta = 63^\circ 12' 36.2''$ (LT)	$\Delta = 63^\circ 12' 36.2''$ (LT)
D = 19' 05' 54.9"	D = 28' 38' 52.4"	D = 28' 38' 52.4"
L = 280.48'	L = 220.64'	L = 220.64'
T = 151.44'	T = 123.07'	T = 123.07'
R = 300.00'	R = 200.00'	R = 200.00'
SE = RC	SE = RC	SE = RC

8/23/2016 8:57:59 AM -5769-Redy\_PSH\_2B-1.dgn  
 I:\SERVICES\

22+16.96  
64.14