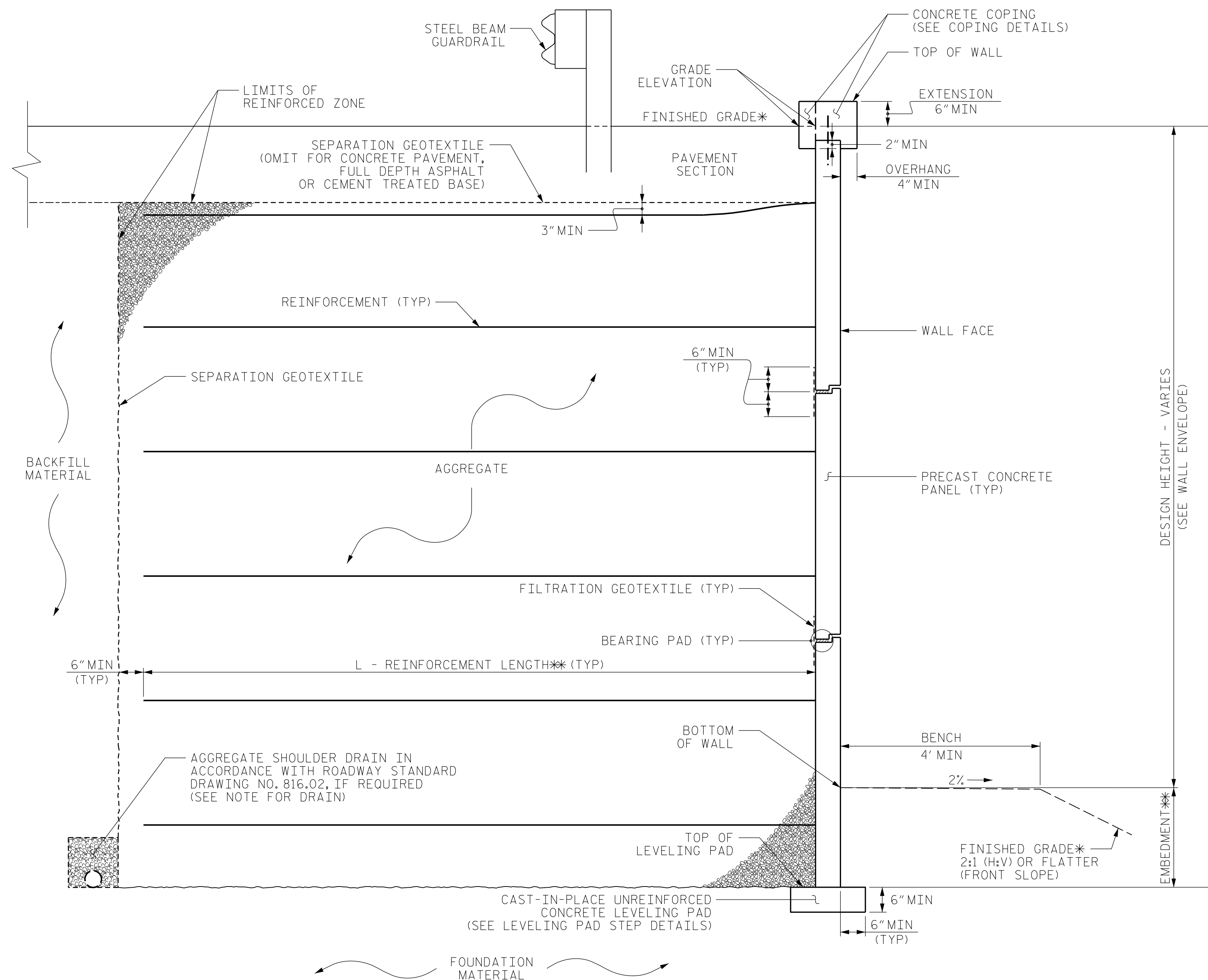


GEOTECHNICAL ENGINEER



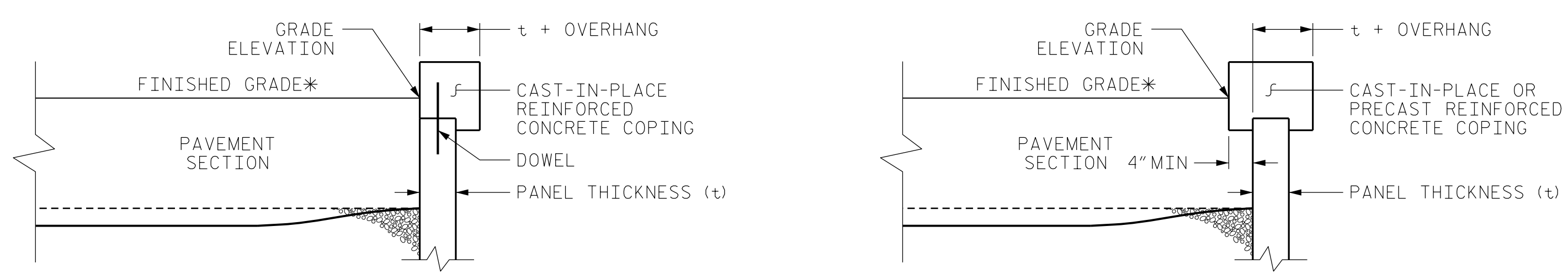
DocuSigned by:  
Matthew J. Alexander 10/2016  
AC113006616443 SIGNATURE DATE

**DOCUMENT NOT CONSIDERED FINAL UNLESS ALL SIGNATURES COMPLETED**



**MSE WALL WITH PRECAST PANELS - TYPICAL SECTION**

\* SEE ROADWAY PLANS FOR FINISHED GRADE DETAILS.  
\*\* SEE MSE RETAINING WALLS PROVISION AND IF APPLICABLE, MSE WALL NOTES FOR EMBEDMENT AND REINFORCEMENT LENGTH REQUIREMENTS.



**COPING DETAILS**

AT THE CONTRACTOR'S OPTION, CONNECT COPING TO PANELS WITH DOWELS OR EXTEND COPING DOWN BACK OF PANELS.  
\* SEE ROADWAY PLANS FOR FINISHED GRADE DETAILS.

PROJECT NO.: I-5710  
WAKE COUNTY  
STATION: -RB4- 14+00.00

SHEET 3 OF 4

PREPARED BY: W. D. FIELDS	DATE: 04/2016
REVIEWED BY: M. J. ALEXANDER	DATE: 05/2016

**Terracon**  
Consulting Engineers & Scientists  
2401 BRENTWOOD ROAD RALEIGH, NC 27604  
PH. (919) 873-2211 FAX. (919) 873-9555

**NORTH CAROLINA DEPARTMENT OF TRANSPORTATION DIVISION OF HIGHWAYS**  
**GEOTECHNICAL ENGINEERING UNIT**

**RETAINING WALL 1 TYPICAL SECTION**

REVISIONS					
NO.	BY	DATE	NO.	BY	DATE
1	MJA	3/22/2016	3		
2	MJA	5/2/2016	4		