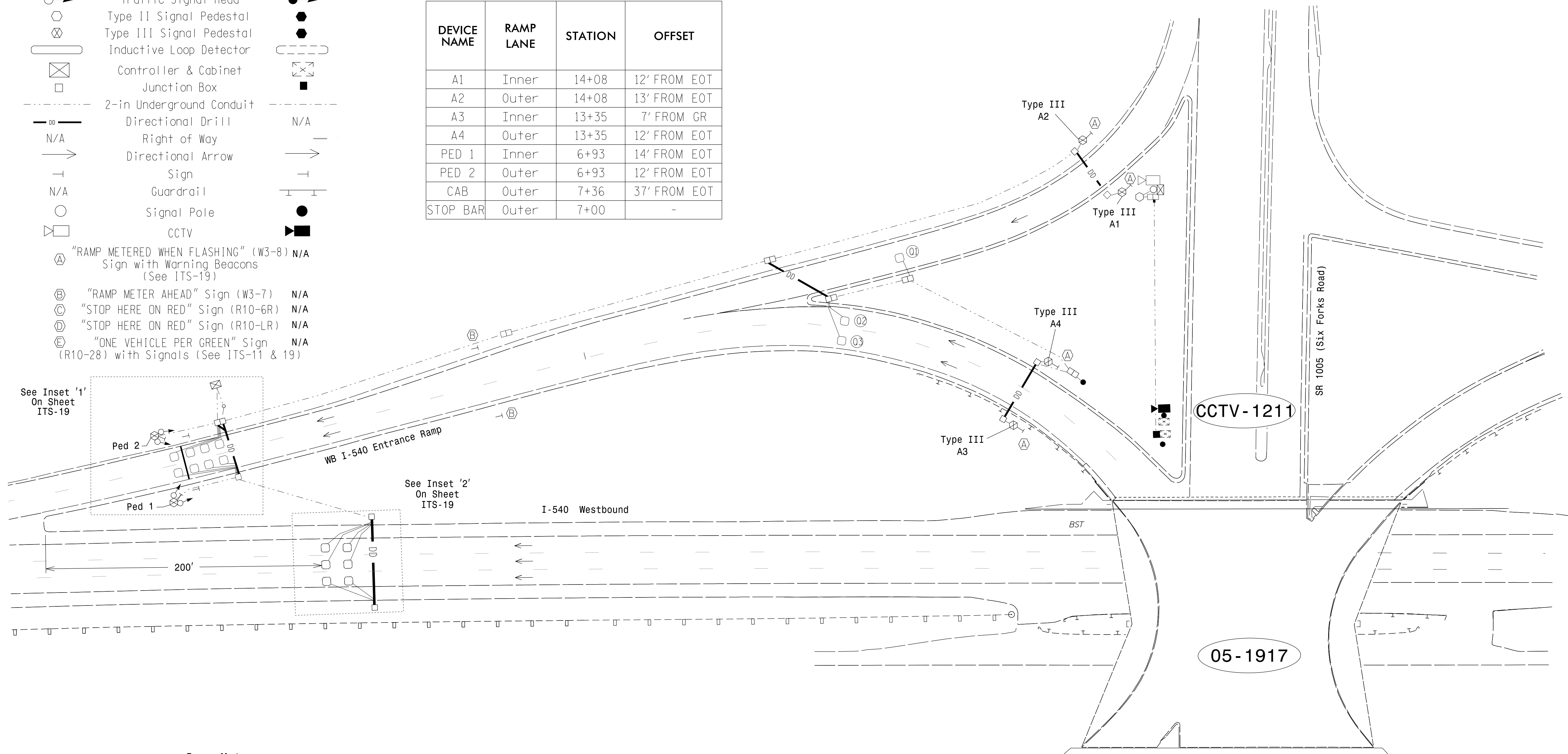


LEGEND

PROPOSED	EXISTING
	N/A
N/A	
N/A	
	N/A
	N/A
	N/A
	N/A
	N/A

POLE AND CABINET STATIONS AND OFFSETS

DEVICE NAME	RAMP LANE	STATION	OFFSET
A1	Inner	14+08	12' FROM EOT
A2	Outer	14+08	13' FROM EOT
A3	Inner	13+35	7' FROM GR
A4	Outer	13+35	12' FROM EOT
PED 1	Inner	6+93	14' FROM EOT
PED 2	Outer	6+93	12' FROM EOT
CAB	Outer	7+36	37' FROM EOT
STOP BAR	Outer	7+00	-



Ramp Meter (System-wide Traffic Responsive)

NOTES

1. Refer to "Roadway Standards Drawings NCDOT" dated January 2012 and "Standard Specifications for Roads and Structures dated January 2012.
2. Ramp Meter shall operate Traffic Responsive.
3. Each lane shall operate alternately, one car per one green.
4. Loops Q1 and Q2 serve as queue backup detection. After 10 seconds of constant actuation, the detector units shall put in a call to the controller to activate alternate metering rate.
5. The Division Traffic Engineer shall determine the hours of operation.
6. Pavement markings are proposed.
7. Set all detector units to presence mode.

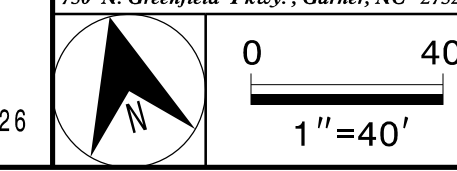
New Installation Dual Lane Ramp Meter

DOCUMENT NOT CONSIDERED FINAL
UNLESS ALL SIGNATURES COMPLETED

	I-540 WB Entrance Ramp at SR 1005 (Six Forks Road)		
	Division 5 Wake County Raleigh		
Prepared for the Offices of: 750 N. Greenfield Pkwy., Garner, NC 27529	PLAN DATE: June 2016 REVIEWED BY: H A BADGETT		
PREPARED BY: J O ENSLEY REVIEWED BY: J T BROOKS	REVISIONS INIT. DATE		
DocuSigned by: 6/27/2016			

ATKINS

5200 77 CENTER DR, SUITE 500
CHARLOTTE, NC 28217
704.665.4411 NCBEES #F-0326



27-JUN-2016 15:55
G:\projects\2016\I-540 Ramp Meter\Ring\Traffic\ITS-18 ITS-18 TMS.DSN18 six forks signal.dgn
WILEG54 AT 005300013