

GENERAL NOTES – CONT.

PROJ. REFERENCE NO.	SHEET NO.
I-5710	TMP-1E

TRAFFIC BARRIER

V) INSTALL TEMPORARY BARRIER ACCORDING TO THE TRANSPORTATION MANAGEMENT PLANS A MAXIMUM OF TWO (2) WEEKS PRIOR TO BEGINNING WORK IN ANY LOCATION. ONCE TEMPORARY BARRIER IS INSTALLED AT ANY LOCATION PROCEED IN A CONTINUOUS MANNER TO COMPLETE THE PROPOSED WORK IN THAT LOCATION UNLESS OTHERWISE STATED IN THE TRANSPORTATION MANAGEMENT PLANS OR AS DIRECTED BY THE ENGINEER.

DO NOT PLACE BARRIER DIRECTLY ON ANY SURFACE OTHER THAN ASPHALT OR CONCRETE.

ONCE TEMPORARY BARRIER IS INSTALLED AT ANY LOCATION AND NO WORK IS PERFORMED BEHIND THE TEMPORARY BARRIER FOR A PERIOD LONGER THAN TWO (2) MONTHS, REMOVE / RESET TEMPORARY BARRIER AT NO COST TO THE DEPARTMENT UNLESS OTHERWISE STATED IN THE TRANSPORTATION MANAGEMENT PLANS, TEMPORARY BARRIER IS PROTECTING A HAZARD, OR AS DIRECTED BY THE ENGINEER.

INSTALL TEMPORARY BARRIER WITH THE TRAFFIC FLOW BEGINNING WITH THE UPSTREAM SIDE OF TRAFFIC. REMOVE TEMPORARY BARRIER AGAINST THE TRAFFIC FLOW BEGINNING WITH THE DOWNSTREAM SIDE OF TRAFFIC.

INSTALL AND SPACE DRUMS NO GREATER THAN TWICE THE POSTED SPEED LIMIT (MPH) TO CLOSE OR KEEP THE SECTION OF THE ROADWAY CLOSED UNTIL THE TEMPORARY BARRIER CAN BE PLACED OR AFTER THE TEMPORARY BARRIER IS REMOVED.

W) PROTECT THE APPROACH END OF MOVABLE/PORTABLE CONCRETE BARRIER AT ALL TIMES DURING THE INSTALLATION AND REMOVAL OF THE BARRIER BY EITHER A TRUCK MOUNTED ATTENUATOR (MAXIMUM 72 HOURS) OR A TEMPORARY CRASH CUSHION.

PROTECT THE APPROACH END OF MOVABLE/PORTABLE CONCRETE BARRIER FROM ONCOMING TRAFFIC AT ALL TIMES BY A TEMPORARY CRASH CUSHION UNLESS THE APPROACH END OF MOVABLE/PORTABLE CONCRETE BARRIER IS OFFSET FROM ONCOMING TRAFFIC AS FOLLOWS OR AS SHOWN IN THE PLANS: (SEE ALSO 1101.05)

POSTED SPEED LIMIT	MINIMUM OFFSET
40 OR LESS	15 FT
45 - 50	20 FT
55	25 FT
60 MPH or HIGHER	30 FT

TRAFFIC CONTROL DEVICES

X) WHEN LANE CLOSURES ARE NOT IN EFFECT SPACE CHANNELIZING DEVICES IN WORK AREAS NO GREATER IN FEET THAN TWICE THE POSTED SPEED LIMIT (MPH) EXCEPT, 10 FT ON-CENTER IN RADII, AND 3 FT OFF THE EDGE OF AN OPEN TRAVELWAY. REFER TO STANDARD SPECIFICATIONS FOR ROADS AND STRUCTURES SECTIONS 1130 (DRUM), 1135 (CONES) AND 1180 (SKINNY-DRUM) FOR ADDITIONAL REQUIREMENTS.

Y) PLACE TYPE III BARRICADES, WITH "ROAD CLOSED" SIGN R11-2 ATTACHED, OF SUFFICIENT LENGTH TO CLOSE ENTIRE ROADWAY.

Z) PLACE ADDITIONAL SETS OF THREE CHANNELIZING DEVICES PERPENDICULAR TO THE EDGE OF TRAVELWAY ON 500 FT CENTERS WHEN UNOPENED LANES ARE CLOSED TO TRAFFIC.

PAVEMENT MARKINGS AND MARKERS

AA) INSTALL TEMPORARY PAVEMENT MARKINGS AND TEMPORARY PAVEMENT MARKERS ON INTERIM LAYERS OF PAVEMENT AS FOLLOWS:

ROAD NAME	MARKING	MARKER
-RB1- LEESVILLE ROAD WB ENTRRANCE RAMP	PAINT	TEMPORARY RAISED
-RB2- CREEDMOOR ROAD WB ENTRANCE RAMP	PAINT	TEMPORARY RAISED
-RB3- SIX FORKS ROAD WB ENTRANCE RAMP	PAINT	TEMPORARY RAISED
-RB4- FALLS OF NEUSE ROAD WB ENTRANCE RAMP	PAINT	TEMPORARY RAISED

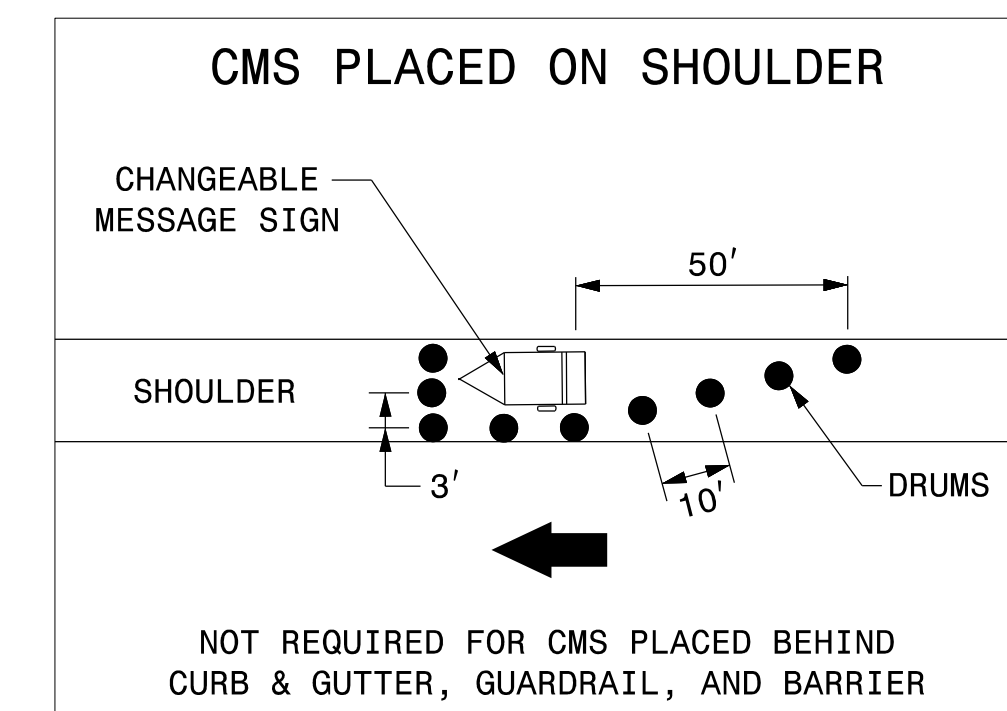
BB) TIE PROPOSED PAVEMENT MARKING LINES TO EXISTING PAVEMENT MARKING LINES.

CC) REMOVE/REPLACE ANY CONFLICTING/DAMAGED PAVEMENT MARKINGS AND MARKERS BY THE END OF EACH DAY'S OPERATION.

LOCAL NOTES

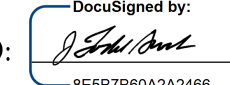
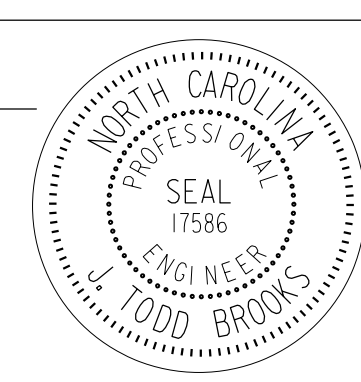
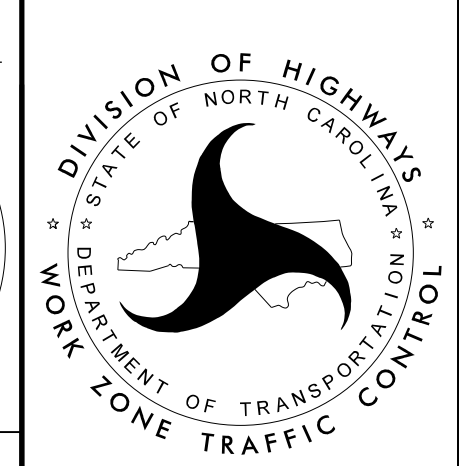
LN-1) NOTIFY THE CITY OF RALEIGH TRAFFIC SIGNAL MANAGER CHRIS JEFFERSON AT 919-996-4064 A MINIMUM OF TEN (10) WORKING DAYS PRIOR TO IMPLEMENTING LANE CLOSURES AND RAMP CLOSURES. CITY FORCES WILL REVISE TRAFFIC SIGNAL TIMING PLANS AS NEEDED DUE TO LANE CLOSURES, RAMP CLOSURES, AND RAMP DETOURS.

LN-2) WHEN PLACING CMS ON A SHOULDER ADJACENT TO OPEN TRAVEL LANE, USE TYPICAL SHOWN BELOW FOR DEVICES TO DELINEATE CMS.



LN-3) DO NOT CLOSE AND DETOUR MORE THAN ONE RAMP DURING ANY WORK PERIOD.

24-MAY-2016 16:58 C:\Transportation\Roadway\NCDOT\I-540 Ramp Metering\TrafficControl\TCPN-5710_TC_TCP_OIE.dgn WILE2054 AT DUS300019

<p>APPROVED: </p> <p>DATE: 5/24/2016</p> <p>SEAL</p> <p></p>	<p></p>	<p>TRANSPORTATION OPERATIONS PLAN</p>
<p>DOCUMENT NOT CONSIDERED FINAL UNLESS ALL SIGNATURES COMPLETED</p>		