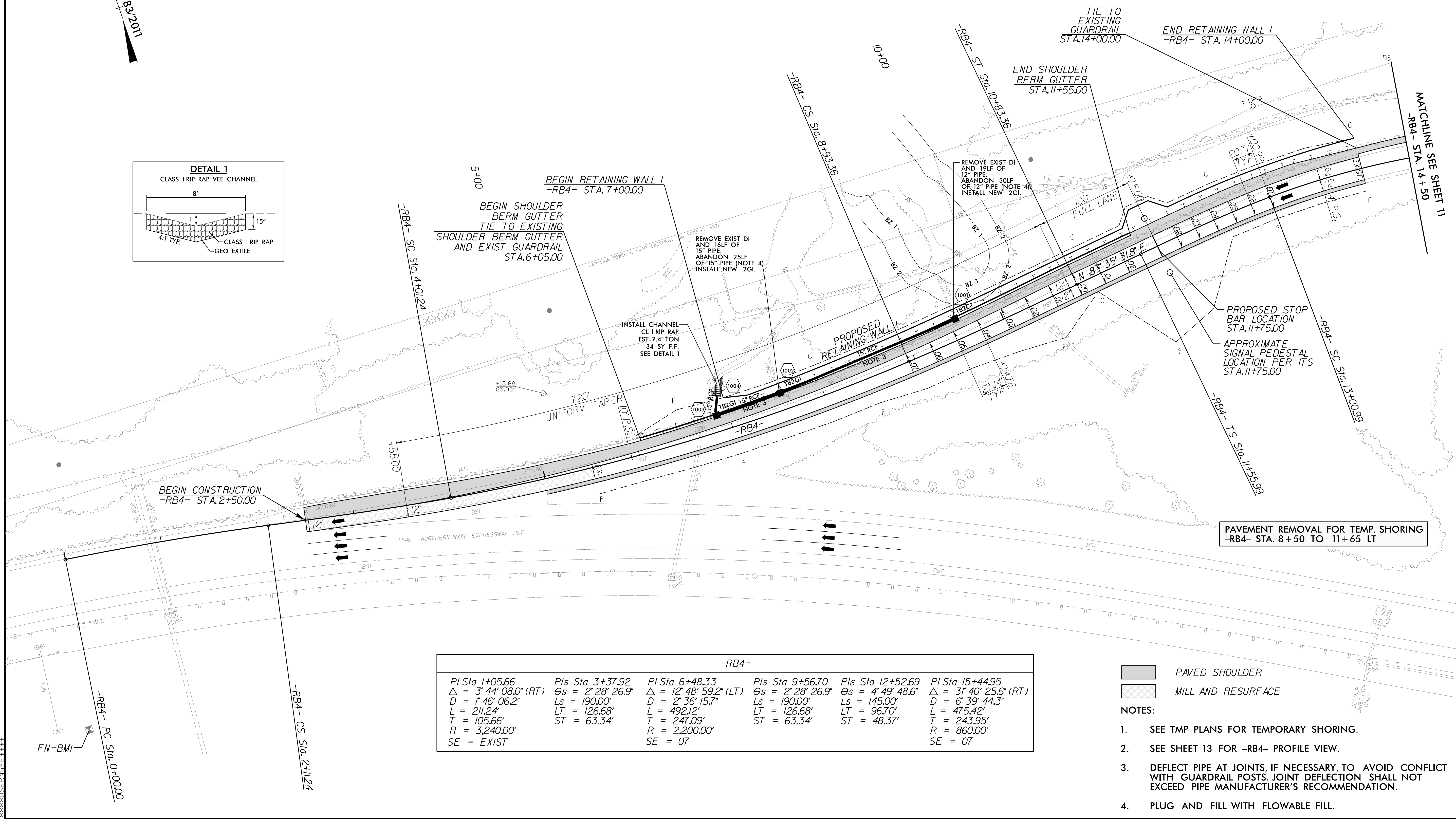
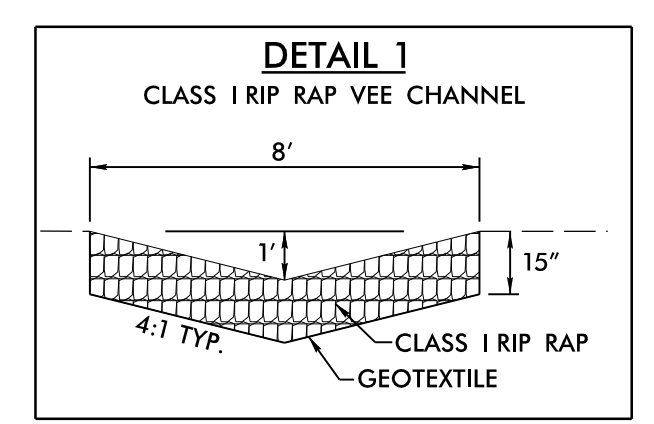
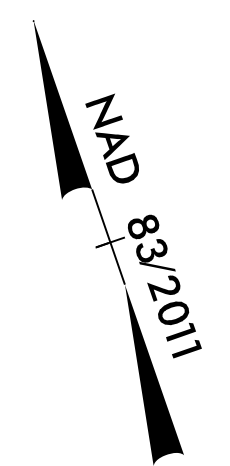


PROJECT REFERENCE NO. 1-5710	SHEET NO. 10
RW SHEET NO.	
ROADWAY DESIGN ENGINEER NORTH CAROLINA PROFESSIONAL SEAL 024929 Clinton J. Morgan / 2/27/2016	HYDRAULICS ENGINEER NORTH CAROLINA PROFESSIONAL SEAL 041957 Robert J. Goodison / 7/26/2016
<b>DOCUMENT NOT CONSIDERED FINAL UNLESS ALL SIGNATURES COMPLETED</b>	

# FALLS OF NEUSE ROAD



-RB4-					
PI Sta 1+05.66	PIs Sta 3+37.92	PI Sta 6+48.33	PIs Sta 9+56.70	PIs Sta 12+52.69	PI Sta 15+44.95
$\Delta = 3' 44' 08.0''$ (RT)	$\Theta_s = 2' 28' 26.9''$	$\Delta = 12' 48' 59.2''$ (LT)	$\Theta_s = 2' 28' 26.9''$	$\Theta_s = 4' 49' 48.6''$	$\Delta = 31' 40' 25.6''$ (RT)
$D = 1' 46' 06.2''$	$L_s = 190.00'$	$D = 2' 36' 15.7''$	$L_s = 190.00'$	$L_s = 145.00'$	$D = 6' 39' 44.3''$
$L = 211.24'$	$LT = 126.68'$	$L = 492.12'$	$LT = 126.68'$	$LT = 96.70'$	$L = 475.42'$
$T = 105.66'$	$ST = 63.34'$	$T = 247.09'$	$ST = 63.34'$	$ST = 48.37'$	$T = 243.95'$
$R = 3,240.00'$		$R = 2,200.00'$			$R = 860.00'$
$SE = EXIST$		$SE = 07$			$SE = 07$

- PAVED SHOULDER
- MILL AND RESURFACE

- NOTES:**
- SEE TMP PLANS FOR TEMPORARY SHORING.
  - SEE SHEET 13 FOR -RB4- PROFILE VIEW.
  - DEFLECT PIPE AT JOINTS, IF NECESSARY, TO AVOID CONFLICT WITH GUARDRAIL POSTS. JOINT DEFLECTION SHALL NOT EXCEED PIPE MANUFACTURER'S RECOMMENDATION.
  - PLUG AND FILL WITH FLOWABLE FILL.

8/17/19  
 25 JUL 2016 10:05 AM  
 26 Roadway\_Plan\_PSH10.dgn  
 \$\$\$\$\$\$USERNAM\$\$\$\$\$\$