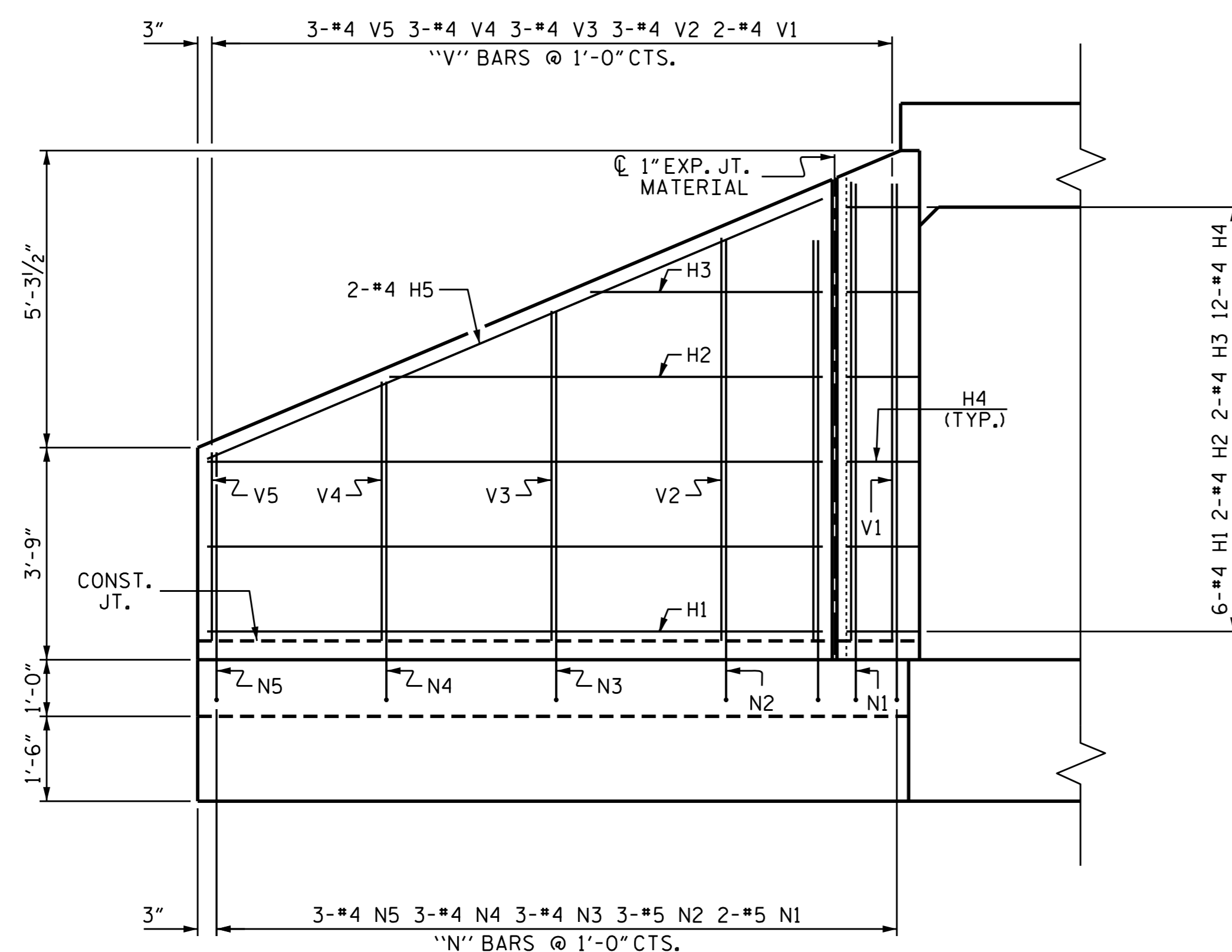


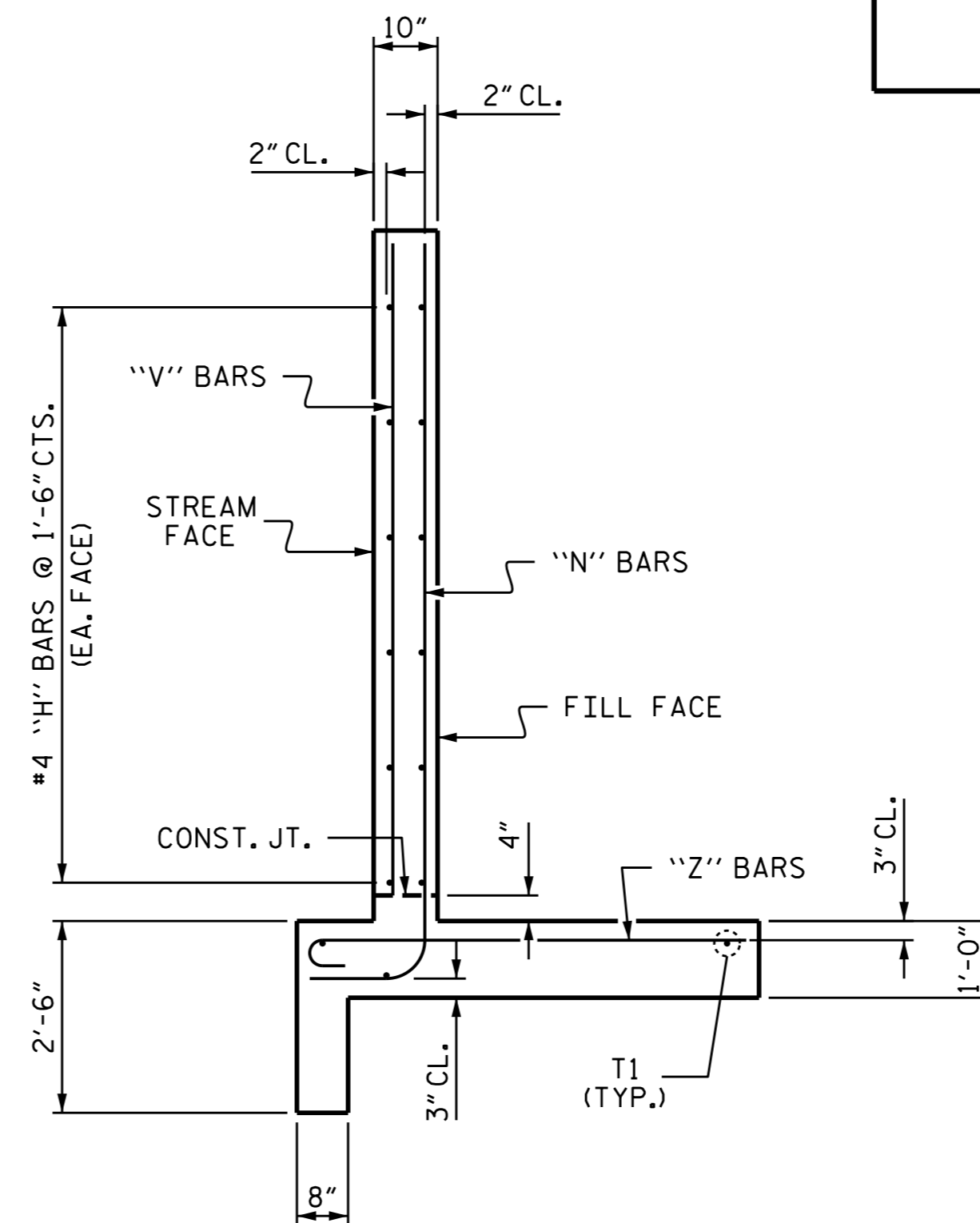
**PLAN W3**

(LEFT WING SHOWN, RIGHT WING SIMILAR)



**ELEVATION W3**

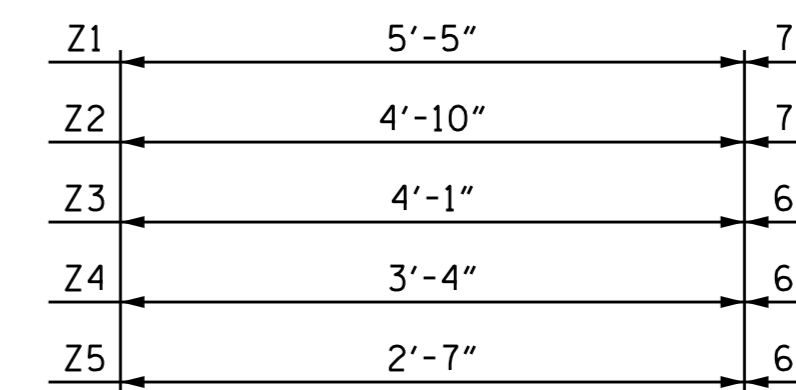
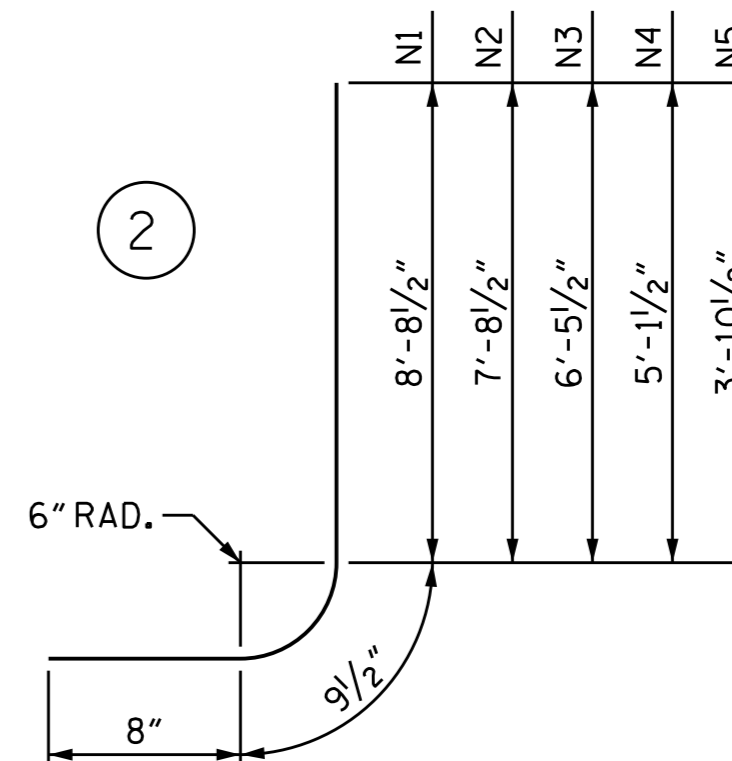
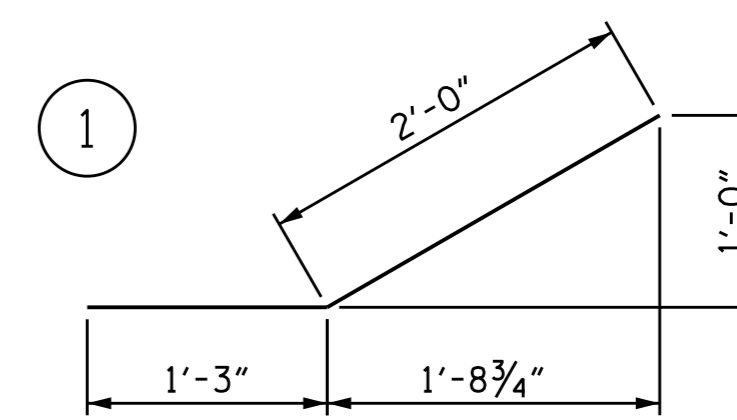
(LEFT WING SHOWN, RIGHT WING SIMILAR)



**TYPICAL WING SECTION**

**BAR TYPES**

ALL BAR DIMENSIONS ARE OUT TO OUT.



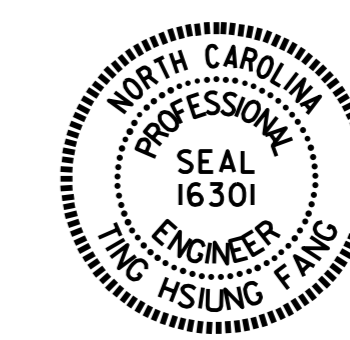
3

**BILL OF MATERIAL**

BAR	NO.	SIZE	TYPE	LENGTH	WEIGHT
H1	12	#4	STR	10'-10"	87
H2	4	#4	STR	7'-8"	21
H3	4	#4	STR	4'-1"	11
H4	24	#4	1	3'-3"	52
H5	4	#4	STR	11'-9"	31
N1	4	#5	2	10'-2"	42
N2	6	#5	2	9'-2"	57
N3	6	#4	2	7'-11"	32
N4	6	#4	2	6'-7"	26
N5	6	#4	2	5'-4"	21
S1	6	#6	STR	6'-0"	54
T1	6	#5	STR	12'-9"	80
V1	4	#4	STR	8'-1"	22
V2	6	#4	STR	7'-1"	28
V3	6	#4	STR	5'-10"	23
V4	6	#4	STR	4'-7"	18
V5	6	#4	STR	3'-4"	13
Z1	4	#5	3	6'-0"	25
Z2	6	#5	3	5'-5"	34
Z3	6	#4	3	4'-7"	18
Z4	6	#4	3	3'-10"	15
Z5	6	#4	3	3'-1"	12

REINFORCING STEEL FOR 2 WINGS	722 LBS
CLASS A CONCRETE	
2 WINGS	10.7 CY
1 HEADWALL	0.4 CY
1 END CURTAIN WALL	0.3 CY
<b>TOTAL</b>	<b>11.4 CY</b>

ASSEMBLED BY : REZA KOUCHEK DATE : 1/13/16  
 CHECKED BY : S.B.WILLIAMS DATE : 4/13/16  
 DRAWN BY : CCJ 10/99  
 CHECKED BY : RWW 03/00



DocuSigned by:  
 Ting Fang 7/14/2016  
 DOCUMENT NOT CONSIDERED  
 FINAL UNLESS ALL  
 SIGNATURES COMPLETED

PROJECT NO. U-2524D  
GUILFORD COUNTY  
 STATION: 505+19.00 -L-

SHEET 6 OF 7  
 STATE OF NORTH CAROLINA  
 DEPARTMENT OF TRANSPORTATION  
 RALEIGH  
**STANDARD WINGS**  
**FOR**  
**CONCRETE BOX CULVERT**  
 H = 8'-0" SLOPE = 2:1  
 90° SKEW @ OUTLET END

REVISIONS						SHEET NO.	
NO.	BY:	DATE:	NO.	BY:	DATE:	C-33	
1			3			TOTAL SHEETS	
2			4			34	