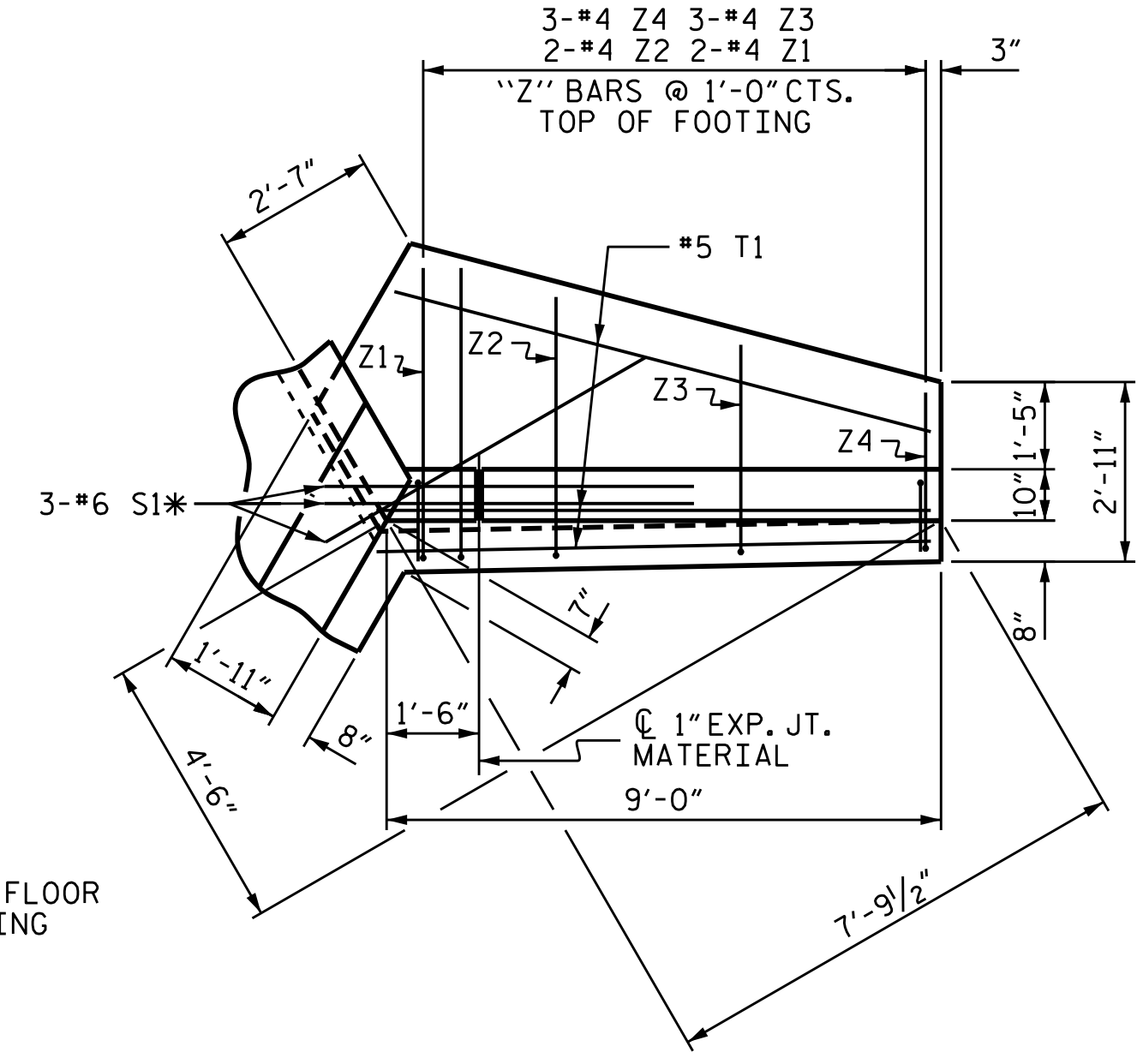
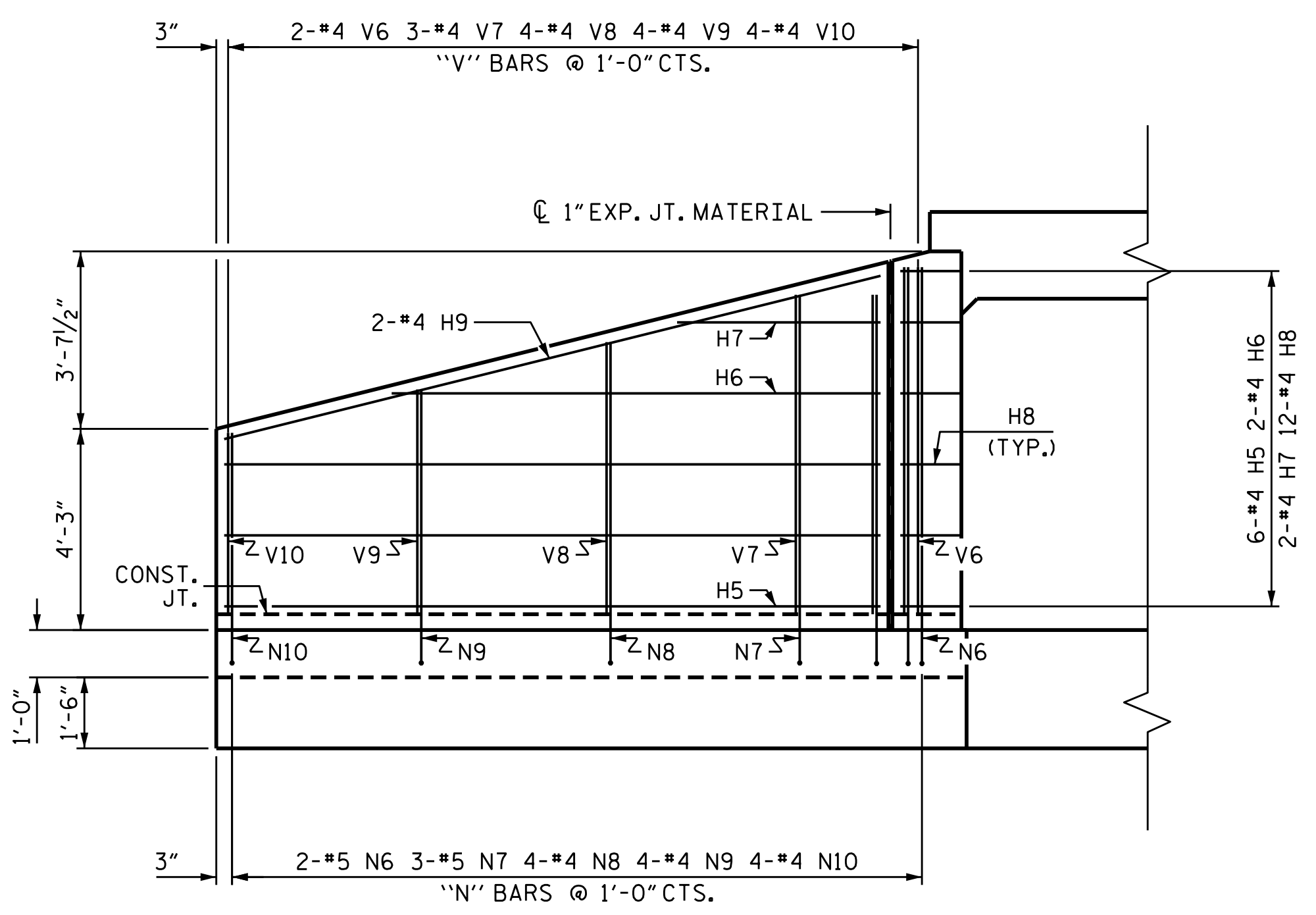


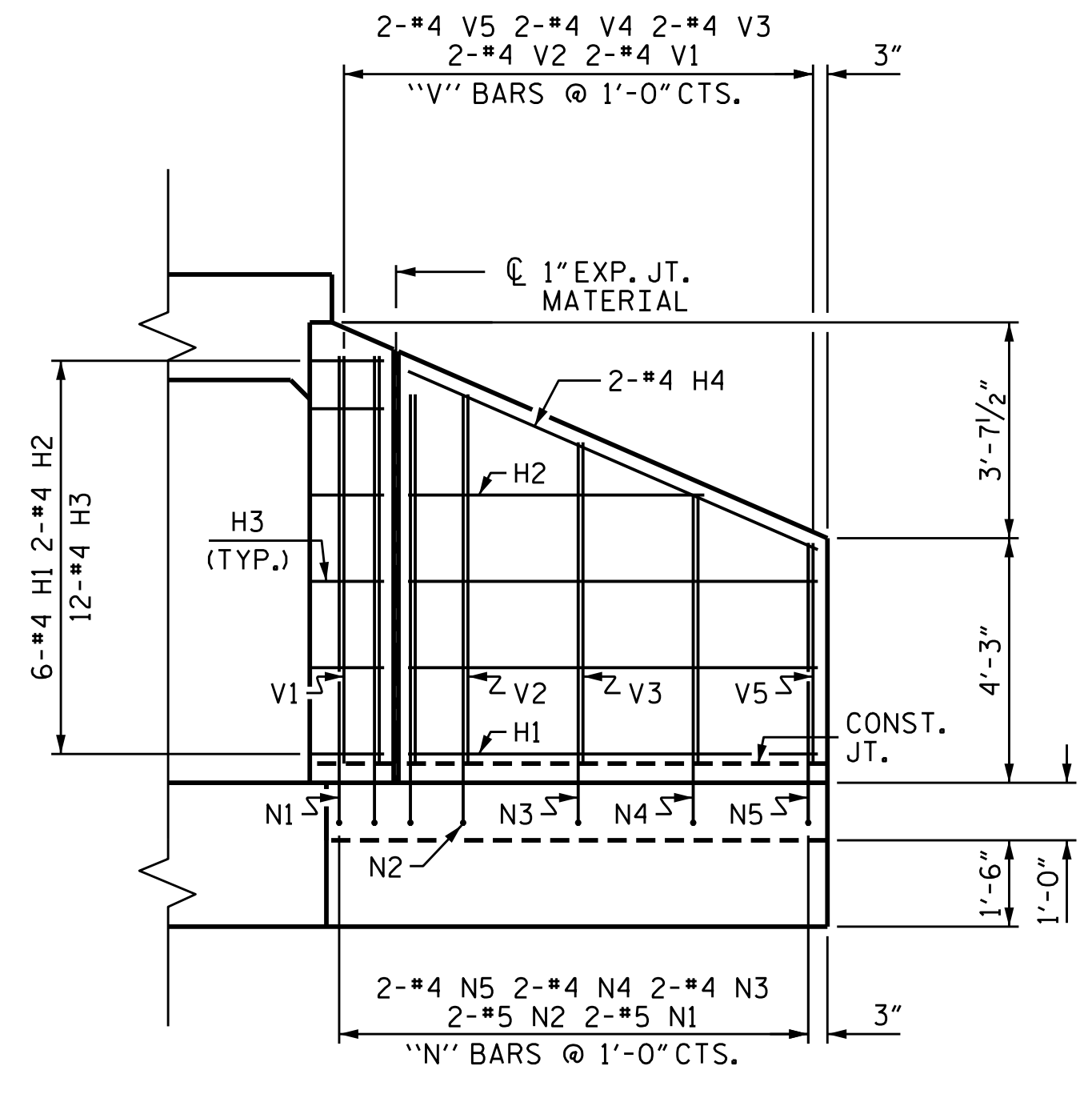
PLAN W1



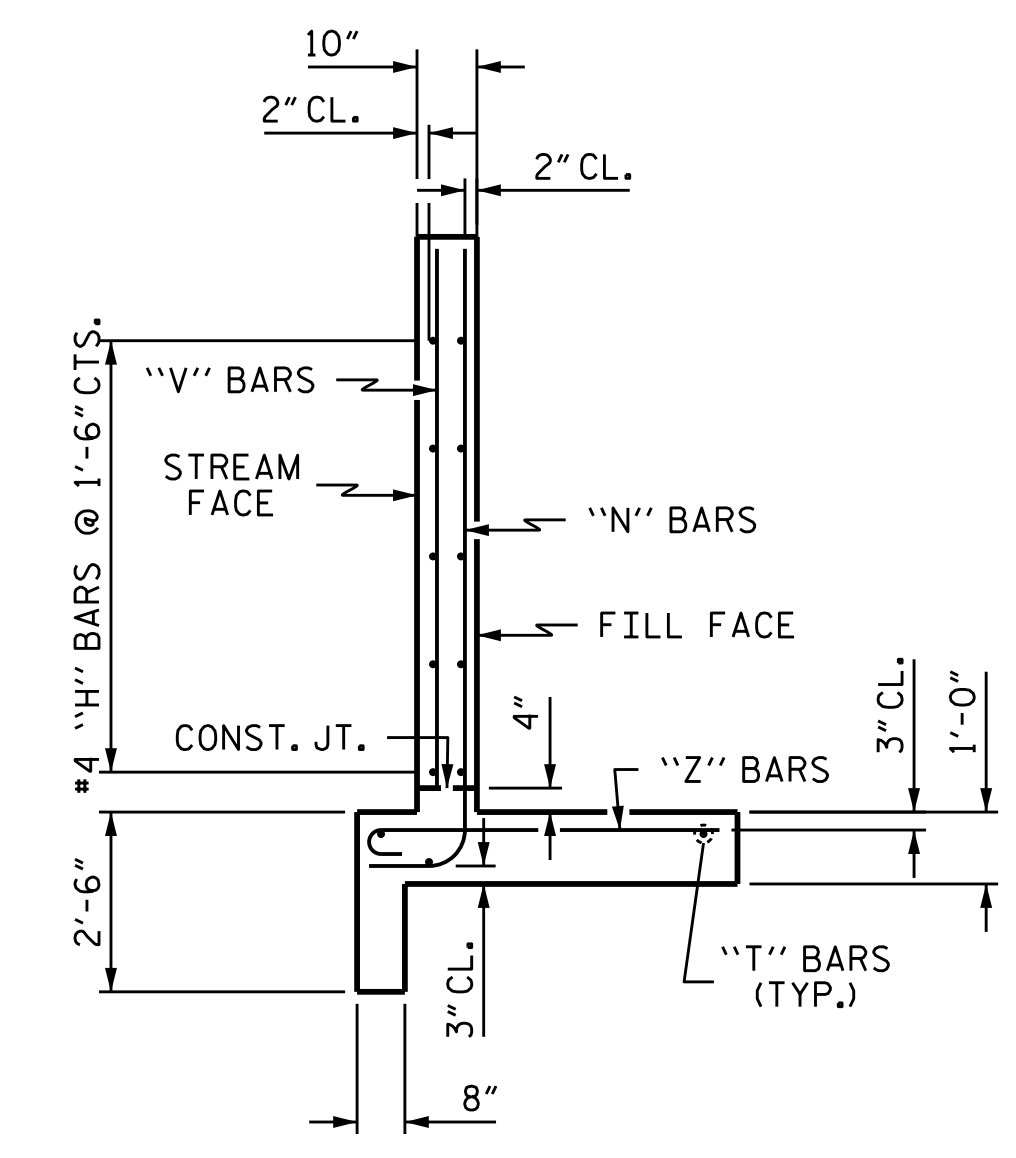
PLAN W2



ELEVATION W1



ELEVATION W2



TYPICAL WING SECTION

BAR TYPES

ALL BAR DIMENSIONS ARE OUT TO OUT.

BAR NO.	SIZE	TYPE	LENGTH	WEIGHT	
H1	#6	#4	STR	7'-1"	28
H2	2	#4	STR	5'-2"	7
H3	12	#4	1	3'-3"	26
H4	2	#4	STR	7'-9"	10
H5	6	#4	STR	13'-10"	55
H6	2	#4	STR	10'-4"	14
H7	2	#4	STR	4'-3"	5
H8	12	#4	2	3'-3"	26
H9	2	#4	STR	14'-3"	19
N1	2	#5	3	9'-1"	19
N2	2	#5	3	8'-6"	18
N3	2	#4	3	7'-7"	10
N4	2	#4	3	6'-9"	9
N5	2	#4	3	5'-10"	8
N6	2	#5	3	9'-4"	19
N7	3	#5	3	8'-10"	28
N8	4	#4	3	7'-10"	21
N9	4	#4	3	6'-10"	18
N10	4	#4	3	5'-10"	16
S1	6	#6	STR	6'-0"	54
T1	3	#5	STR	9'-0"	28
T2	3	#5	STR	15'-9"	49
V1	2	#4	STR	7'-1"	9
V2	2	#4	STR	6'-5"	9
V3	2	#4	STR	5'-7"	7
V4	2	#4	STR	4'-8"	6
V5	2	#4	STR	3'-10"	5
V6	2	#4	STR	7'-4"	10
V7	3	#4	STR	6'-9"	14
V8	4	#4	STR	5'-9"	15
V9	4	#4	STR	4'-9"	13
V10	4	#4	STR	3'-10"	10
Z1	2	#4	4	5'-3"	7
Z2	2	#4	4	4'-9"	6
Z3	3	#4	4	3'-11"	8
Z4	3	#4	4	3'-1"	6
Z5	5	#4	4	5'-0"	17
Z6	4	#4	4	4'-4"	12
Z7	4	#4	4	3'-9"	10
Z8	4	#4	4	3'-1"	8

BILL OF MATERIAL

BAR NO.	SIZE	TYPE	LENGTH	WEIGHT	
H1	#6	#4	STR	7'-1"	28
H2	2	#4	STR	5'-2"	7
H3	12	#4	1	3'-3"	26
H4	2	#4	STR	7'-9"	10
H5	6	#4	STR	13'-10"	55
H6	2	#4	STR	10'-4"	14
H7	2	#4	STR	4'-3"	5
H8	12	#4	2	3'-3"	26
H9	2	#4	STR	14'-3"	19
N1	2	#5	3	9'-1"	19
N2	2	#5	3	8'-6"	18
N3	2	#4	3	7'-7"	10
N4	2	#4	3	6'-9"	9
N5	2	#4	3	5'-10"	8
N6	2	#5	3	9'-4"	19
N7	3	#5	3	8'-10"	28
N8	4	#4	3	7'-10"	21
N9	4	#4	3	6'-10"	18
N10	4	#4	3	5'-10"	16
S1	6	#6	STR	6'-0"	54
T1	3	#5	STR	9'-0"	28
T2	3	#5	STR	15'-9"	49
V1	2	#4	STR	7'-1"	9
V2	2	#4	STR	6'-5"	9
V3	2	#4	STR	5'-7"	7
V4	2	#4	STR	4'-8"	6
V5	2	#4	STR	3'-10"	5
V6	2	#4	STR	7'-4"	10
V7	3	#4	STR	6'-9"	14
V8	4	#4	STR	5'-9"	15
V9	4	#4	STR	4'-9"	13
V10	4	#4	STR	3'-10"	10
Z1	2	#4	4	5'-3"	7
Z2	2	#4	4	4'-9"	6
Z3	3	#4	4	3'-11"	8
Z4	3	#4	4	3'-1"	6
Z5	5	#4	4	5'-0"	17
Z6	4	#4	4	4'-4"	12
Z7	4	#4	4	3'-9"	10
Z8	4	#4	4	3'-1"	8

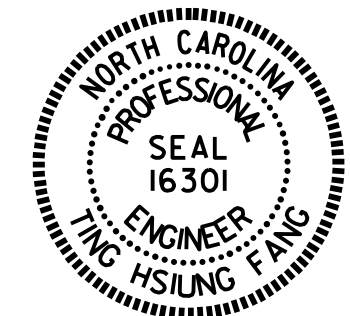
REINFORCING STEEL 660 LBS FOR 2 WINGS

CLASS A CONCRETE

2 WINGS	9.9	CY
1 HEADWALL	0.6	CY
1 END CURTAIN WALLS	0.6	CY
TOTAL	11.1	CY

PROJECT NO. U-2524D
 GUILFORD COUNTY
 STATION: 2+22.93 -SPCY8-
 SHEET 4 OF 5

STATE OF NORTH CAROLINA
 DEPARTMENT OF TRANSPORTATION
 RALEIGH
 CULVERT #3
 SINGLE 10'X7' RCBC
 INLET END WINGS
 H = 7'-0" SLOPE = 2:1
 120° SKEW



DocuSigned by:
 Ting Fang 8/16/2016
 E7208400977435

ASSEMBLED BY : A. SORSENGINH DATE : 6/7/16
 CHECKED BY : T. H. FANG DATE : 6/15/16
 DRAWN BY : CCJ 11/99
 CHECKED BY : RWW 03/00

DOCUMENT NOT CONSIDERED
 FINAL UNLESS ALL
 SIGNATURES COMPLETED

REVISIONS				SHEET NO.	
NO.	BY:	DATE:	NO.	BY:	DATE:
1			3		
2			4		

TOTAL SHEETS 34