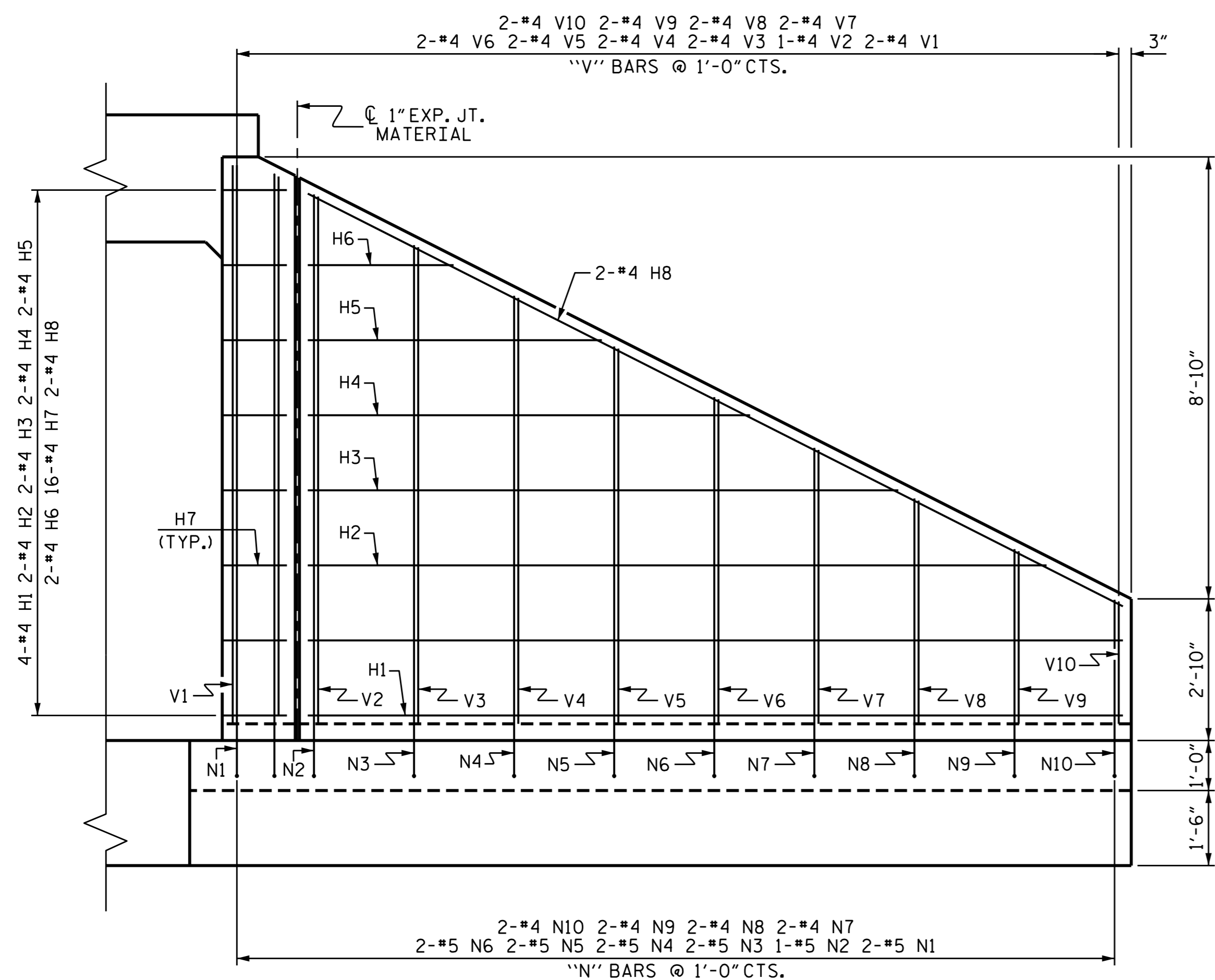
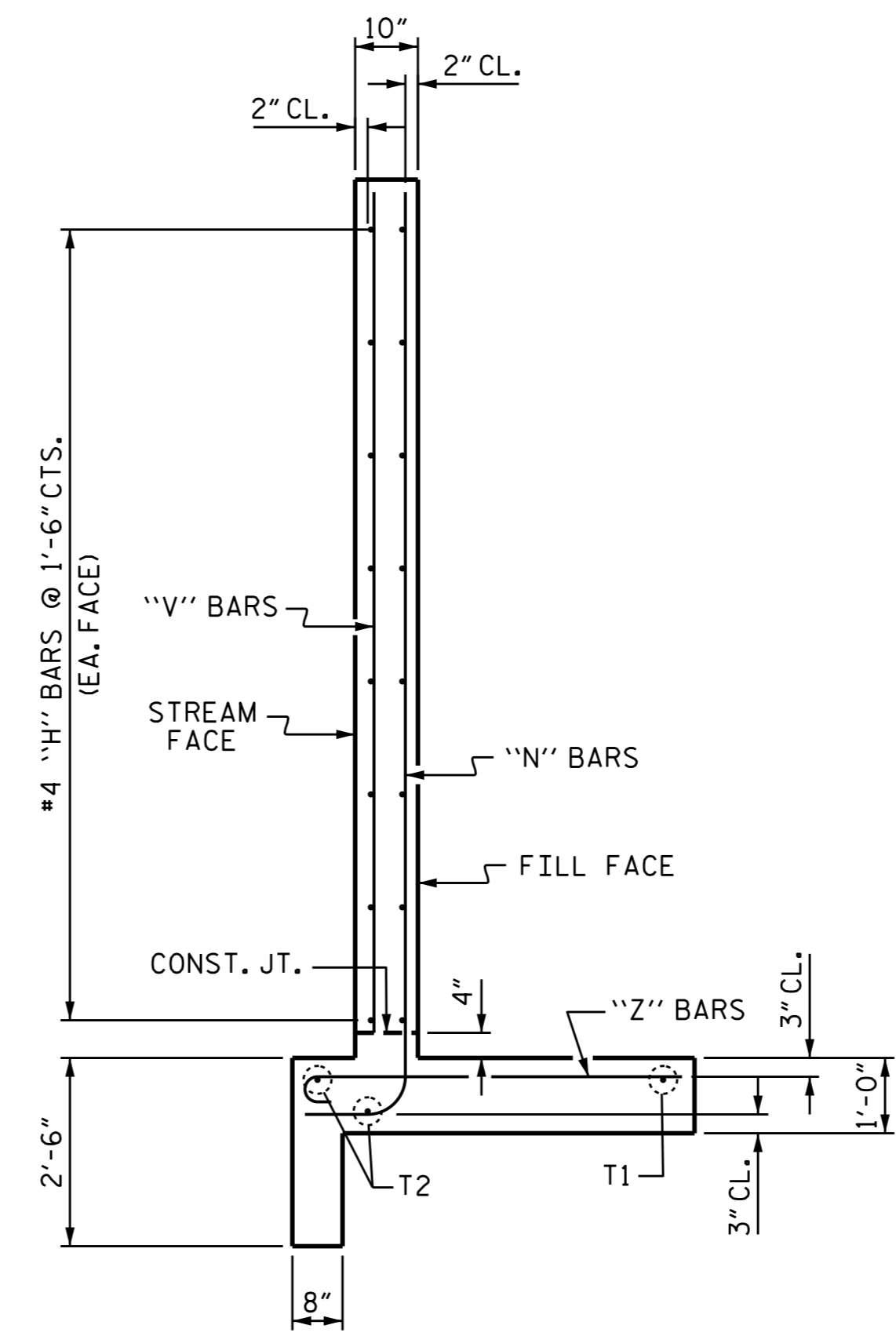


PLAN
S1 @ BOTTOM OF FLOOR SLAB & FOOTING



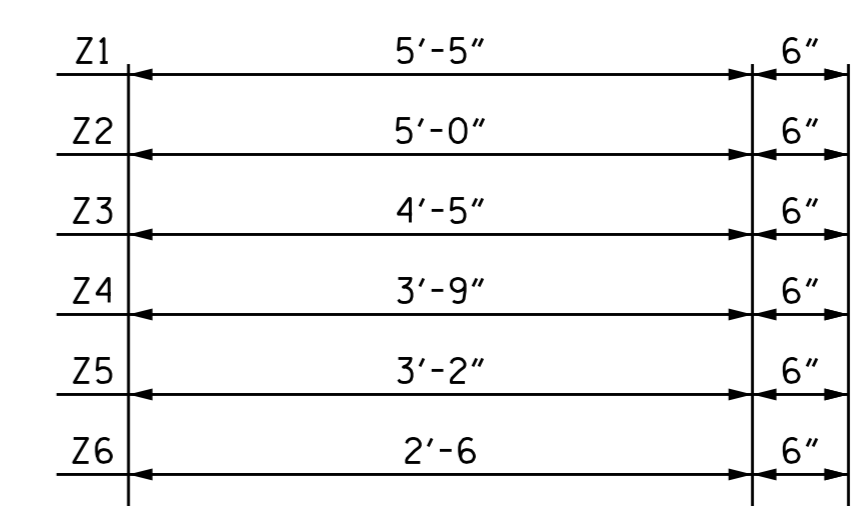
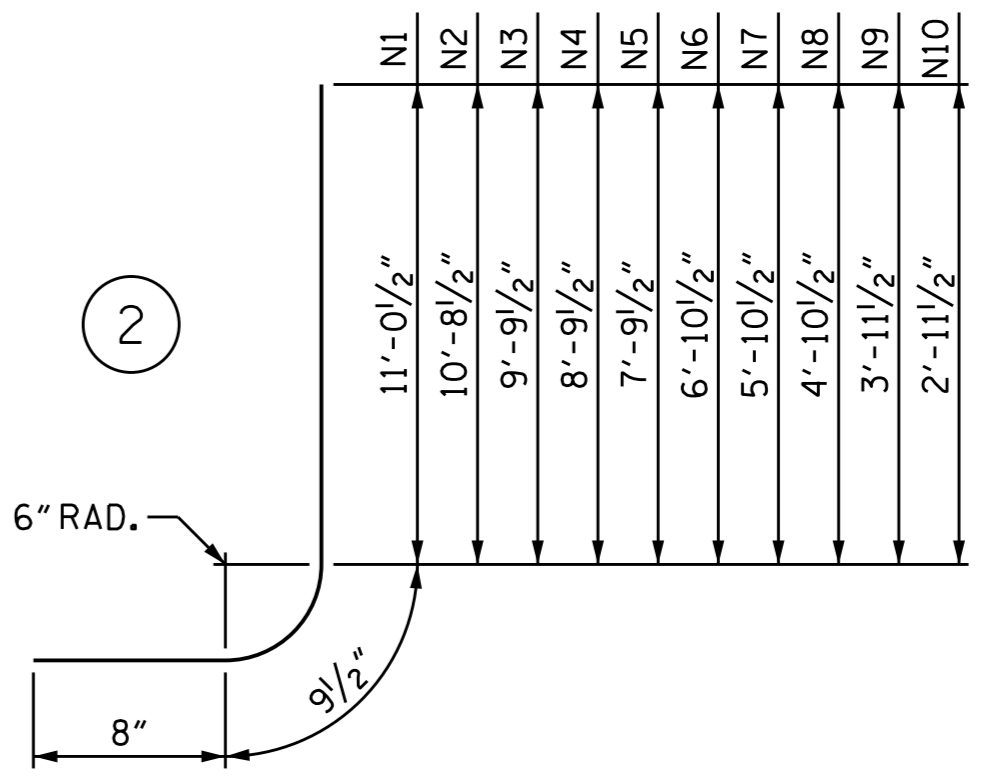
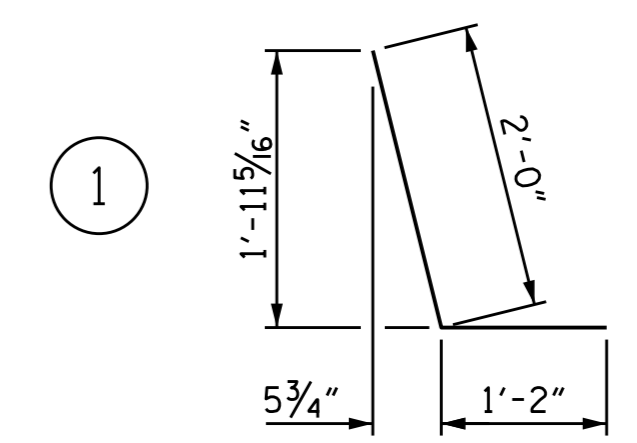
ELEVATION



TYPICAL WING SECTION

BAR TYPES

ALL BAR DIMENSIONS ARE OUT TO OUT.



BILL OF MATERIAL

BAR NO.	NO.	SIZE	TYPE	LENGTH	WEIGHT
H1	4	#4	STR	16'-3"	43
H2	2	#4	STR	14'-7"	19
H3	2	#4	STR	11'-6"	15
H4	2	#4	STR	8'-5"	11
H5	2	#4	STR	5'-4"	7
H6	2	#4	STR	2'-3"	3
H7	16	#4	1	3'-2"	34
H8	2	#4	STR	18'-0"	24
N1	2	#5	2	12'-6"	26
N2	1	#5	2	12'-2"	13
N3	2	#5	2	11'-3"	23
N4	2	#5	2	10'-3"	21
N5	2	#5	2	9'-3"	19
N6	2	#5	2	8'-4"	17
N7	2	#4	2	7'-4"	10
N8	2	#4	2	6'-4"	8
N9	2	#4	2	5'-5"	7
N10	2	#4	2	4'-5"	6
S1	3	#6	STR	6'-0"	27
T1	1	#5	STR	15'-11"	17
T2	2	#5	STR	18'-7"	39
V1	2	#4	STR	10'-6"	14
V2	1	#4	STR	10'-2"	7
V3	2	#4	STR	9'-2"	12
V4	2	#4	STR	8'-3"	11
V5	2	#4	STR	7'-3"	10
V6	2	#4	STR	6'-3"	8
V7	2	#4	STR	5'-4"	7
V8	2	#4	STR	4'-4"	6
V9	2	#4	STR	3'-4"	4
V10	2	#4	STR	2'-5"	3
Z1	1	#4	3	5'-11"	4
Z2	5	#4	3	5'-6"	18
Z3	3	#4	3	4'-11"	10
Z4	3	#4	3	4'-3"	9
Z5	3	#4	3	3'-8"	7
Z6	3	#4	3	3'-0"	6

TOTAL REINFORCING STEEL FOR 1 WING 525 LBS

CLASS A CONCRETE FOR 1 WING 8.0 CY
TOTAL 8.0 CY

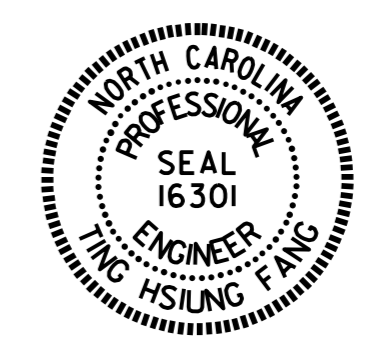
FOR HEAD WALL & CURTAIN WALL QUANTITIES, SEE SHEET C-17

PROJECT NO. U-2524D
GUILFORD COUNTY
STATION: 9+04.29 -RPAY8-

SHEET 7 OF 9

STATE OF NORTH CAROLINA
DEPARTMENT OF TRANSPORTATION
RALEIGH
CULVERT #2&3
DOUBLE 10' X 7' RCBC
OUTLET END WING (W2)

H = 7'-0" SLOPE = 2:1



Designed by: Ting Fang 7/15/2016

DOCUMENT NOT CONSIDERED FINAL UNLESS ALL SIGNATURES COMPLETED

NO.	BY:	DATE:	NO.	BY:	DATE:	SHEET NO.
1			3			C-20
2			4			TOTAL SHEETS 34

DRAWN BY: A. SORSENGINH DATE: 7/2016
CHECKED BY: T. H. FANG DATE: 7/2016
DESIGN ENGINEER OF RECORD: A. SORSENGINH DATE: 7/2016