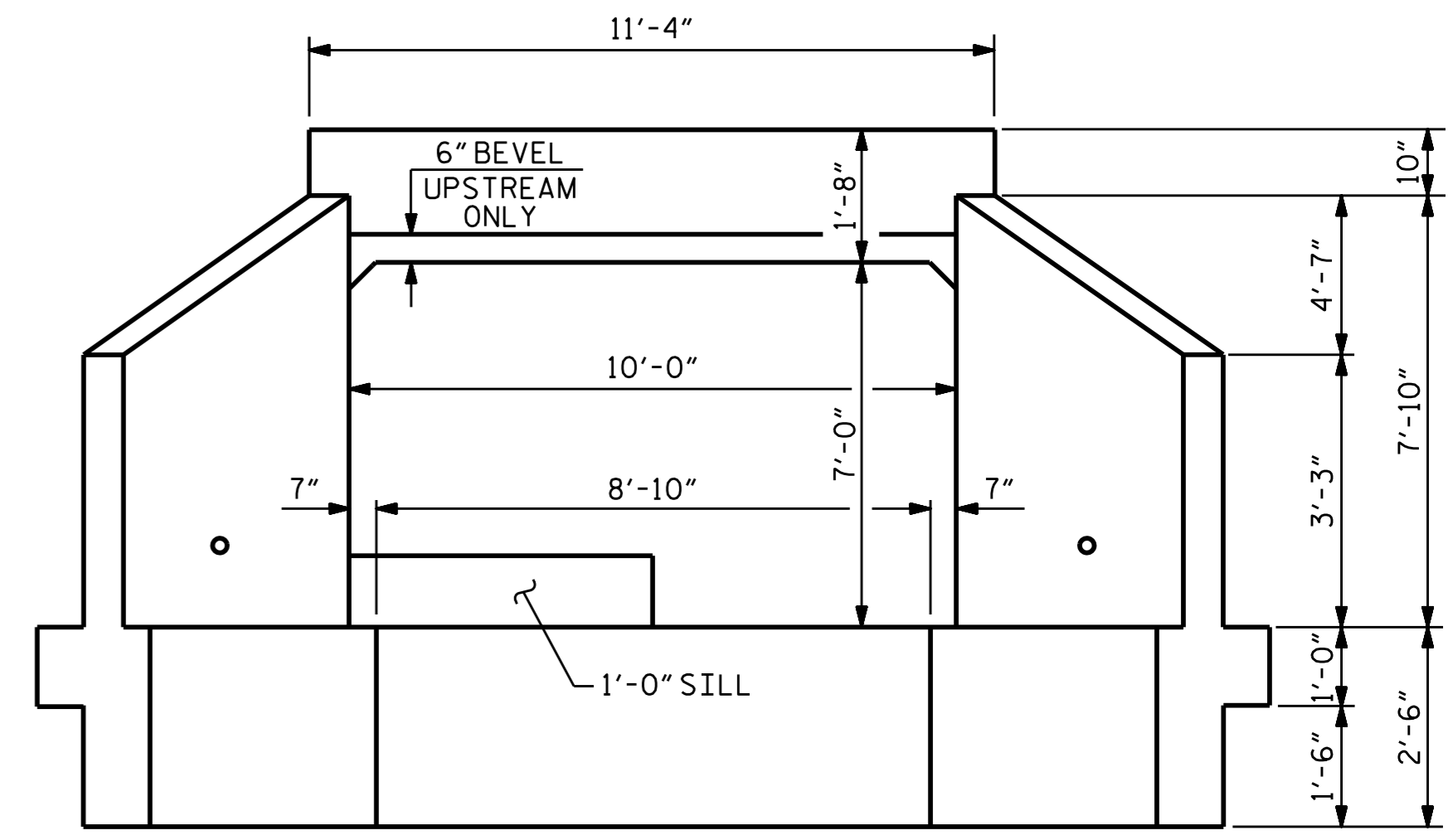


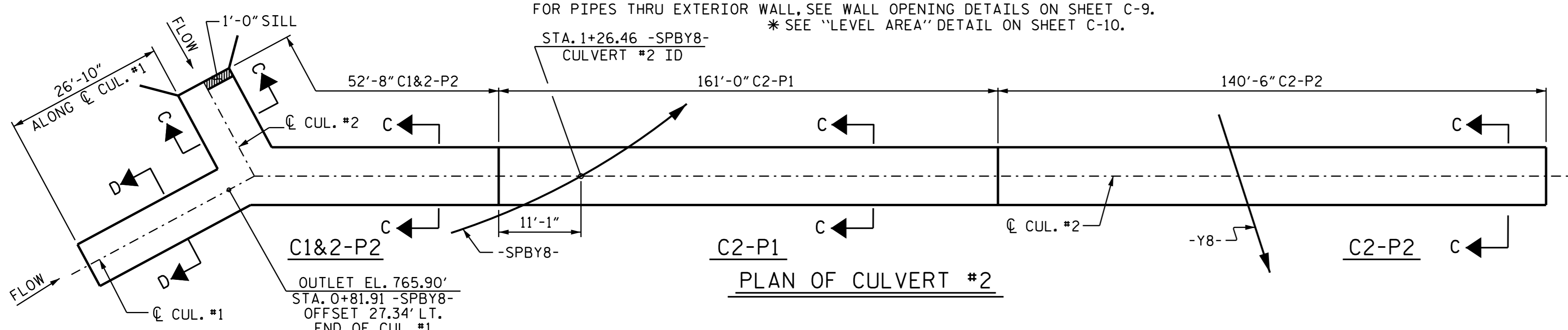
**CULVERT SECTION ALONG CULVERT**

PORTION OF CUL #1 ON PHASE C1&2-P2 NOT SHOWN FOR CLARITY. FOR PIPES THRU EXTERIOR WALL, SEE WALL OPENING DETAILS ON SHEET C-9. \* SEE "LEVEL AREA" DETAIL ON SHEET C-10.

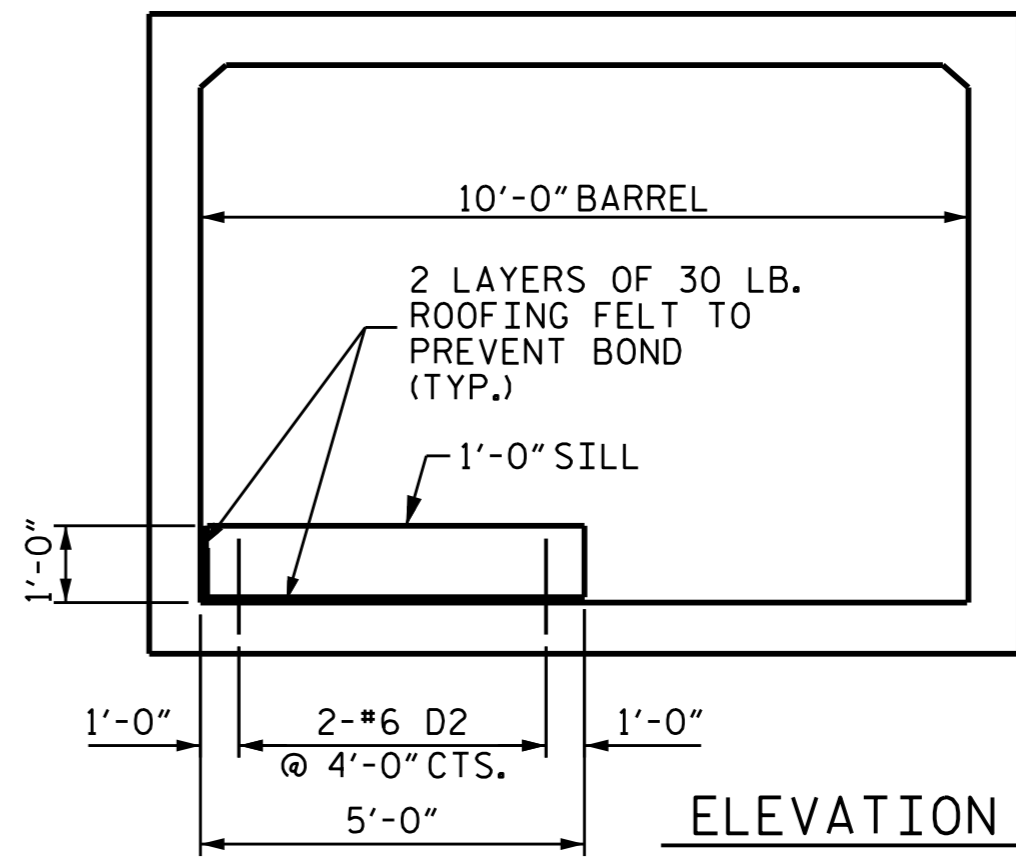


**INLET END ELEVATION**

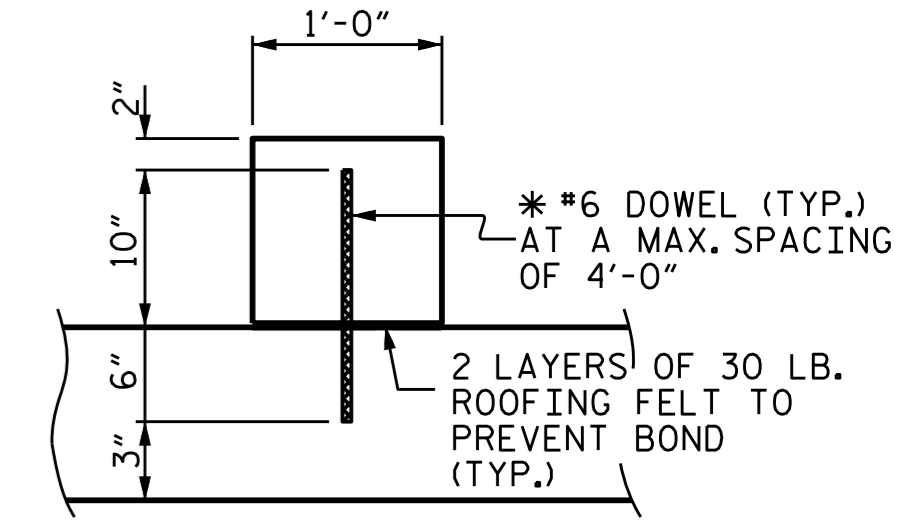
LOOKING DOWN STREAM



**PLAN OF CULVERT #2**

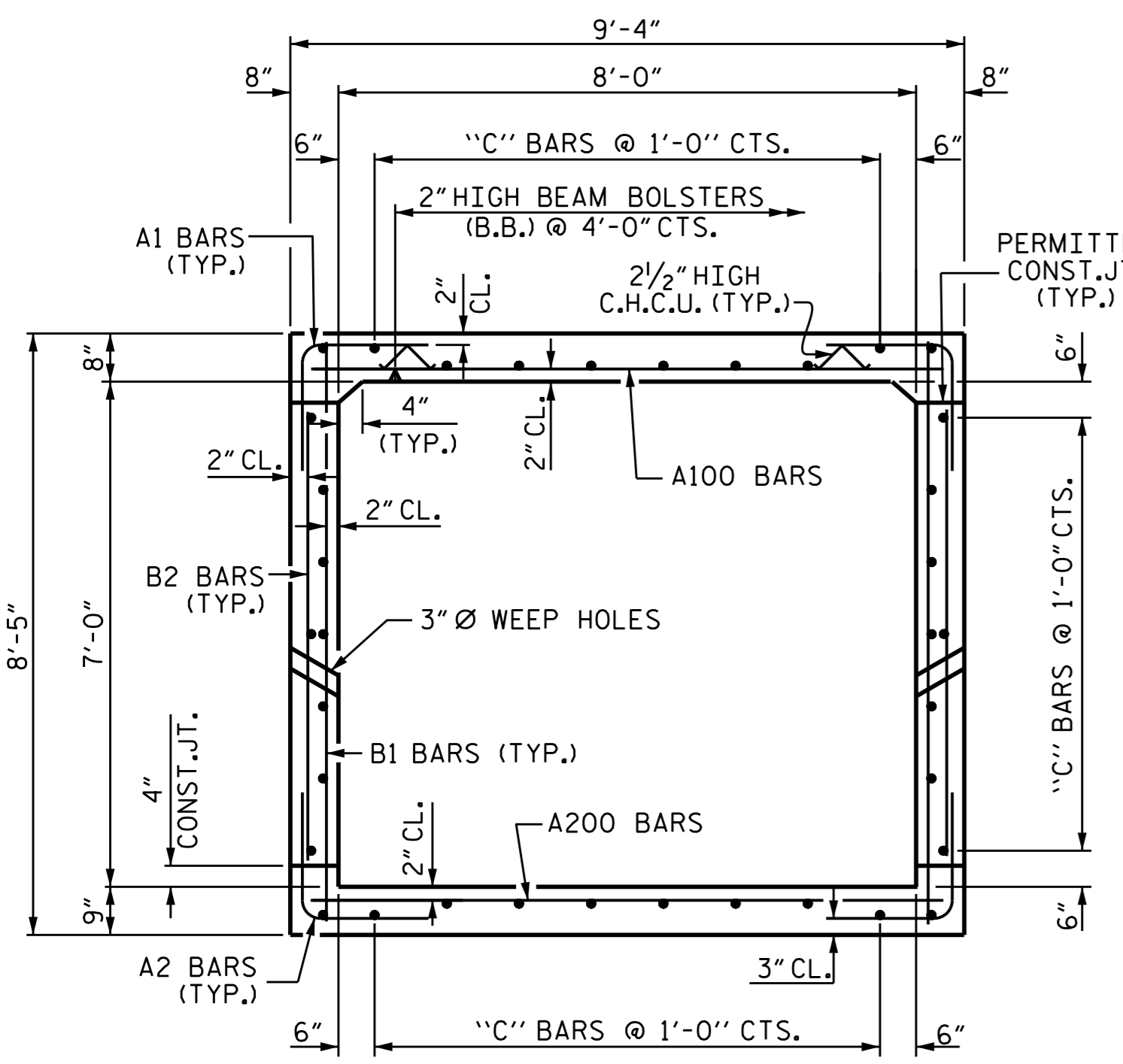


**ELEVATION**



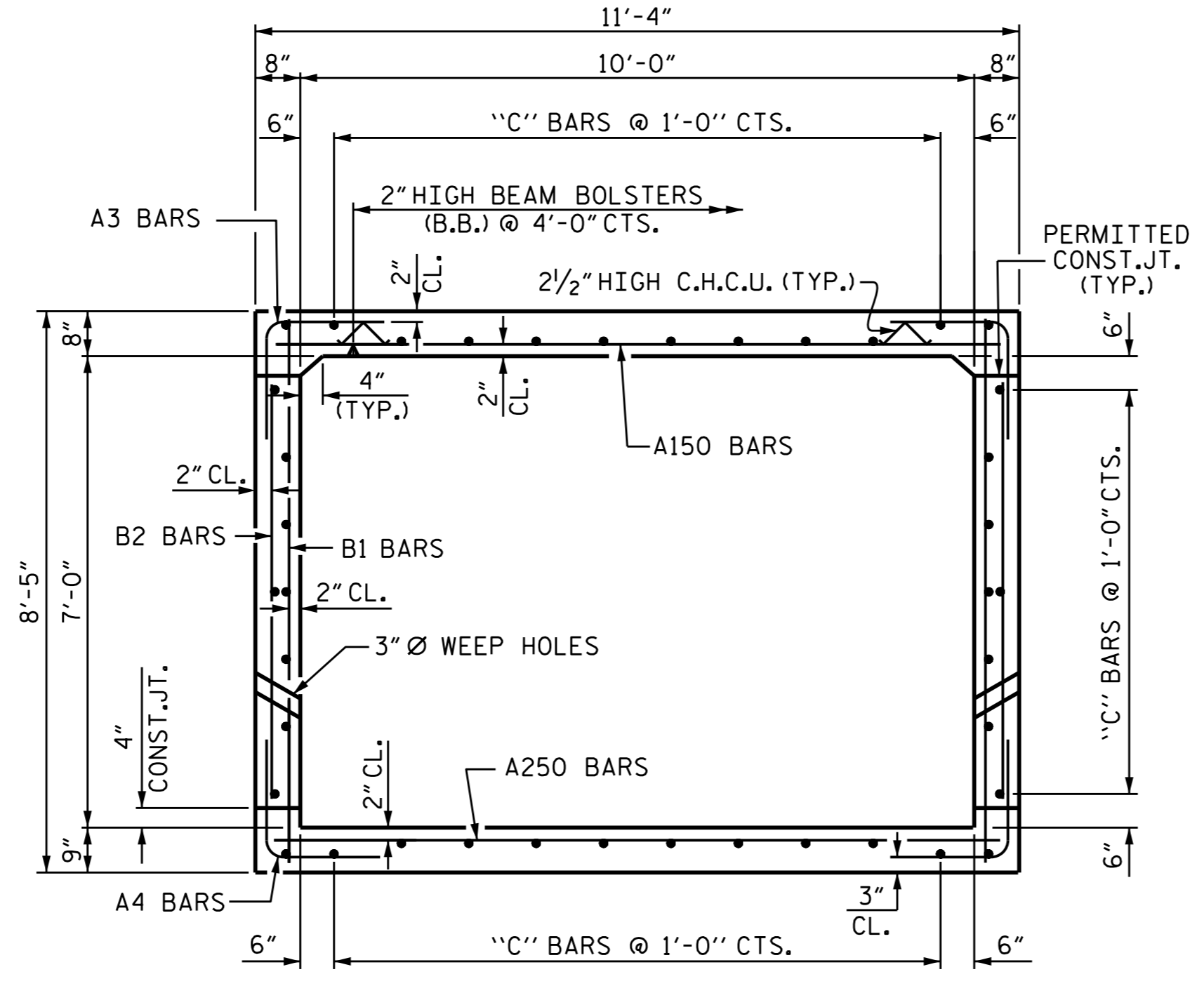
**SECTION THROUGH SILL**

**CULVERT SILL DETAILS**



**SECTION D-D**

THERE ARE 36 "C" BARS IN BARREL SECTION FOR CULVERT #1



**SECTION C-C**

THERE ARE 40 "C" BARS IN BARREL SECTION FOR CULVERT #2

TOTAL CULVERT #2 QUANTITIES				
PAY ITEM	PHASE I C2-P1	PHASE II C2-P2	PHASE II C1&2-P2	TOTAL
CLASS A CONCRETE				
BARREL @ 0.944 CY/FT	152.0 C.Y.	132.6 C.Y.	72.6 C.Y.	357.2 C.Y.
WINGS ETC.			9.6 C.Y.	9.6 C.Y.
SUBTOTAL	152.0 C.Y.	132.6 C.Y.	82.2 C.Y.	366.8 C.Y.
REINFORCING STEEL				
BARREL	23,748 LBS.	20,521 LBS.	11,707 LBS.	55,976 LBS.
WINGS ETC.			576 LBS.	576 LBS.
SUBTOTAL	23,748 LBS.	20,521 LBS.	12,283 LBS.	56,552 LBS.
CULVERT EXCAVATION	LUMP SUM	LUMP SUM	LUMP SUM	LUMP SUM
FOUNDATION COND. MAT'L	174 TONS	152 TONS	82 TONS	408 TONS



DocuSigned by: Ting Fang 8/16/2016

PROJECT NO. U-2524D  
**GUILFORD COUNTY**  
 STATION: 1+26.46 -SPBY8-

SHEET 2 OF 7

STATE OF NORTH CAROLINA  
 DEPARTMENT OF TRANSPORTATION  
 RALEIGH  
**CULVERT #2**  
**SINGLE 10' X 7' RCBC**  
**C2-P1, C2-P2 & C1&2-P2**  
**40°-31'-08" SKEW**

DRAWN BY: A. SORSENGINH DATE: 1/2016  
 CHECKED BY: T. H. FANG DATE: 5/15/16  
 DESIGN ENGINEER OF RECORD: A. SORSENGINH DATE: 5/26/16

DOCUMENT NOT CONSIDERED  
 FINAL UNLESS ALL  
 SIGNATURES COMPLETED

REVISIONS						SHEET NO. C-8
NO.	BY:	DATE:	NO.	BY:	DATE:	
1			3			TOTAL SHEETS 34
2			4			