

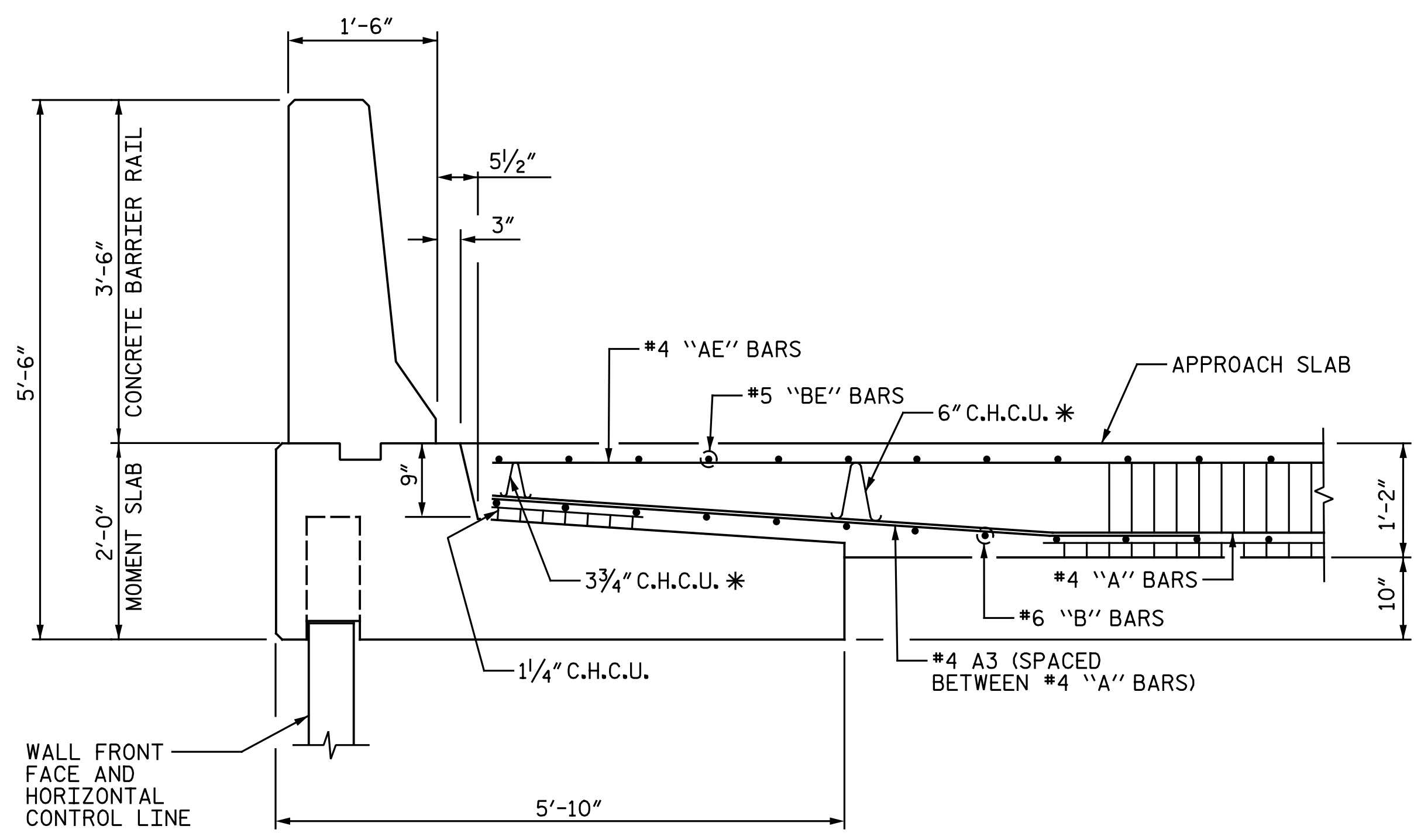
**NOTES:**

THE COST OF THE BARRIER RAIL ON THE APPROACH SLAB SHALL BE INCLUDED IN THE LINEAR FOOT CONTRACT PRICE BID FOR "CONCRETE BARRIER RAIL".

THE BARRIER RAIL ON EACH APPROACH SLAB SHALL NOT BE CAST UNTIL ALL APPROACH SLAB CONCRETE HAS BEEN CAST AND HAS REACHED A MINIMUM COMPRESSION STRENGTH OF 3,000 PSI.

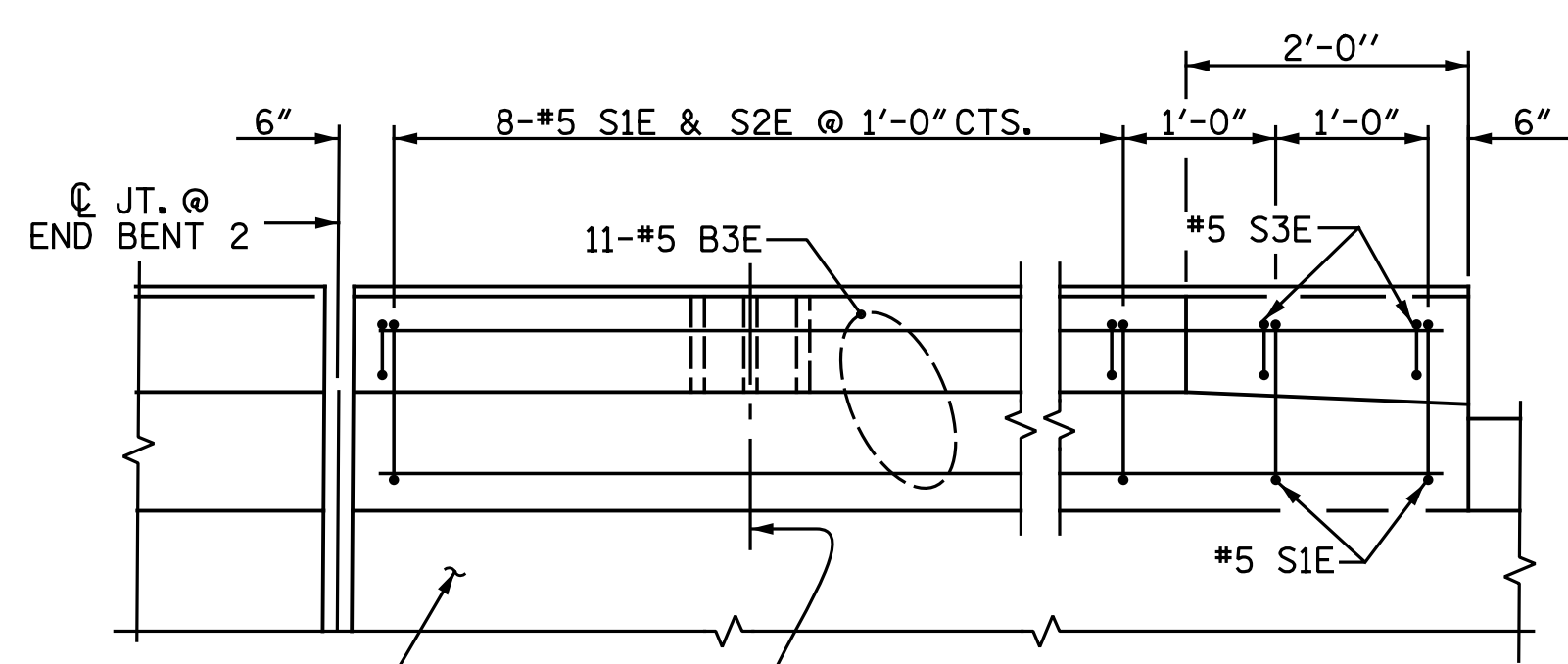
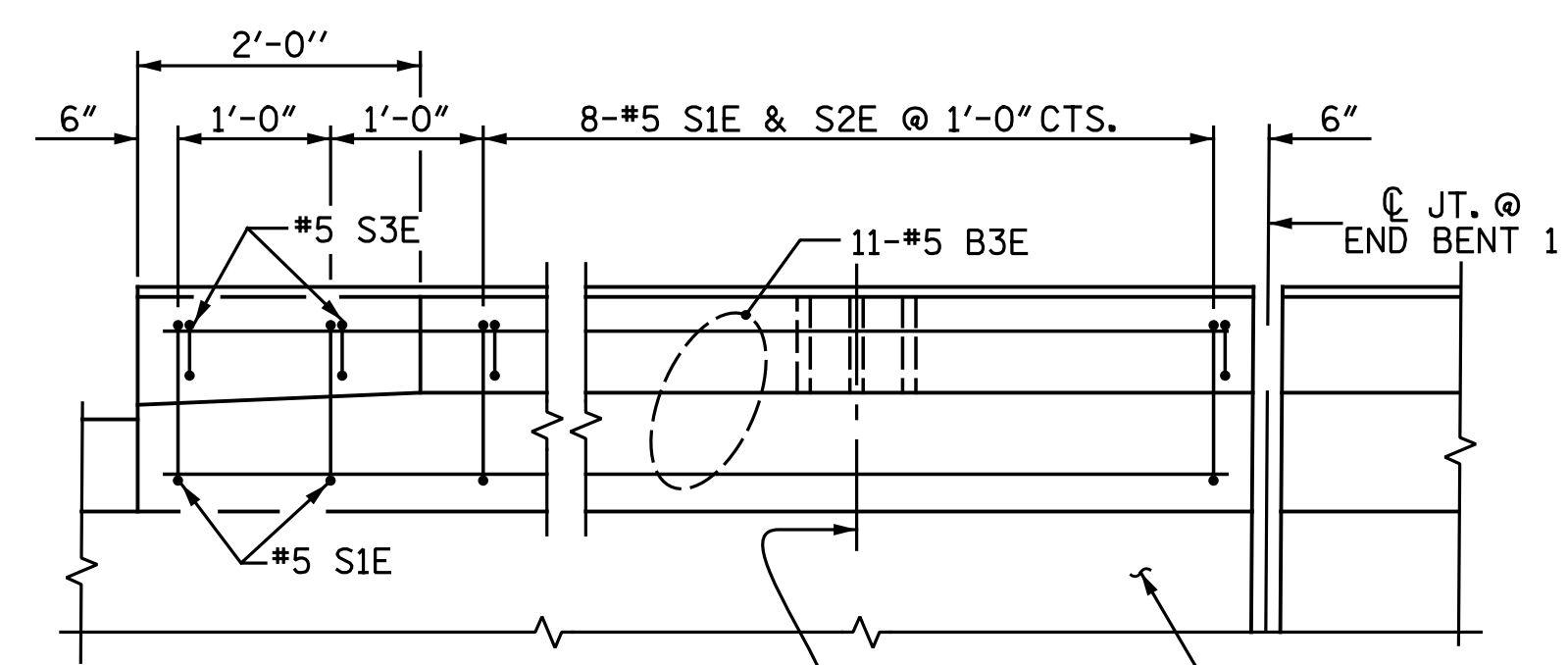
ALL REINFORCING STEEL IN BARRIER RAILS SHALL BE EPOXY COATED.

FOR MOMENT SLAB DETAILS, SEE "CONCRETE BARRIER RAIL WITH MOMENT SLAB" SHEETS.



**DETAILS AT MOMENT SLAB**

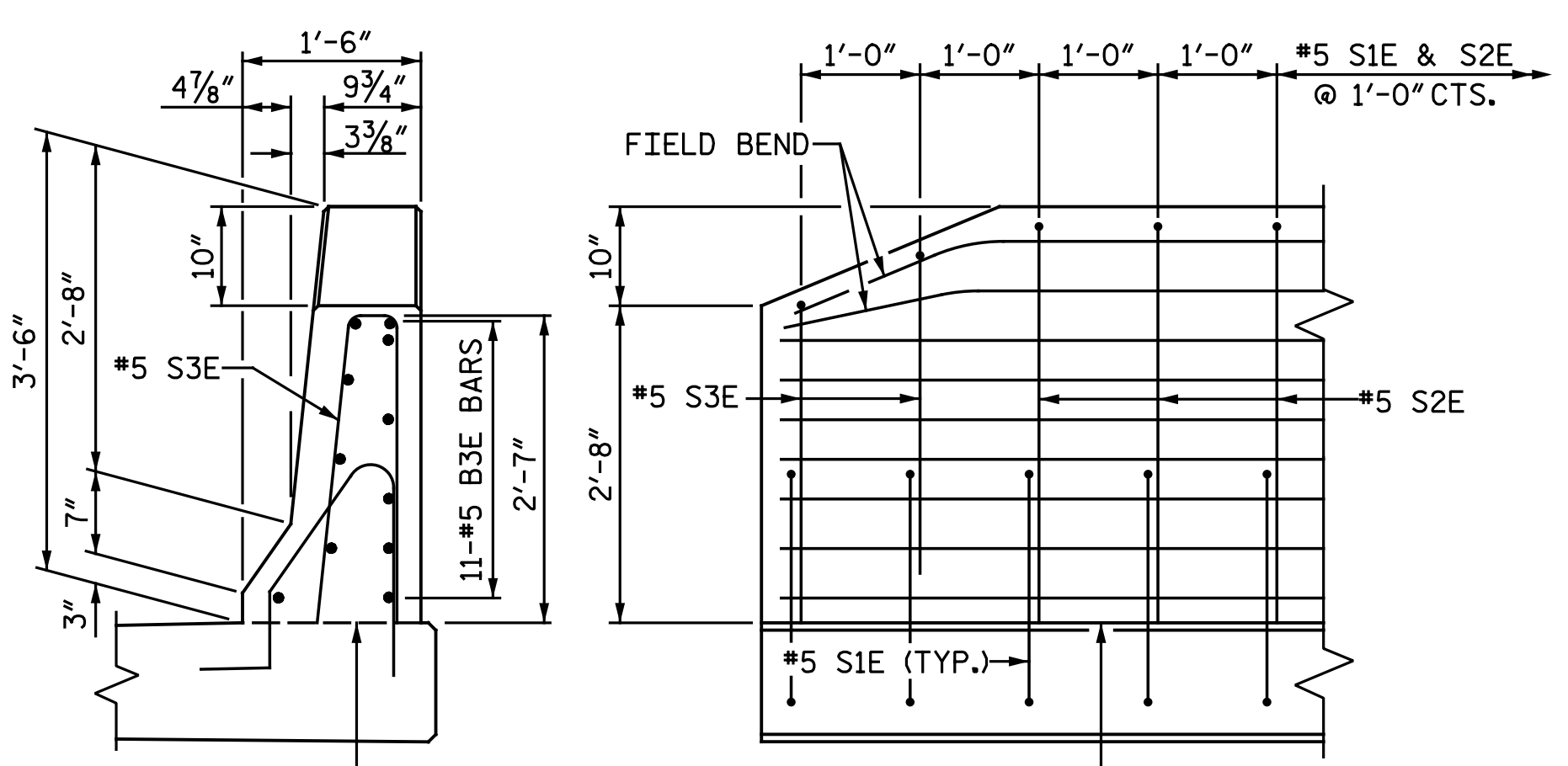
\* SPACE C.H.C.U. AS REQUIRED TO ACHIEVE SPECIFIED REBAR CLEAR COVERS.



END BENT 1

END BENT 2

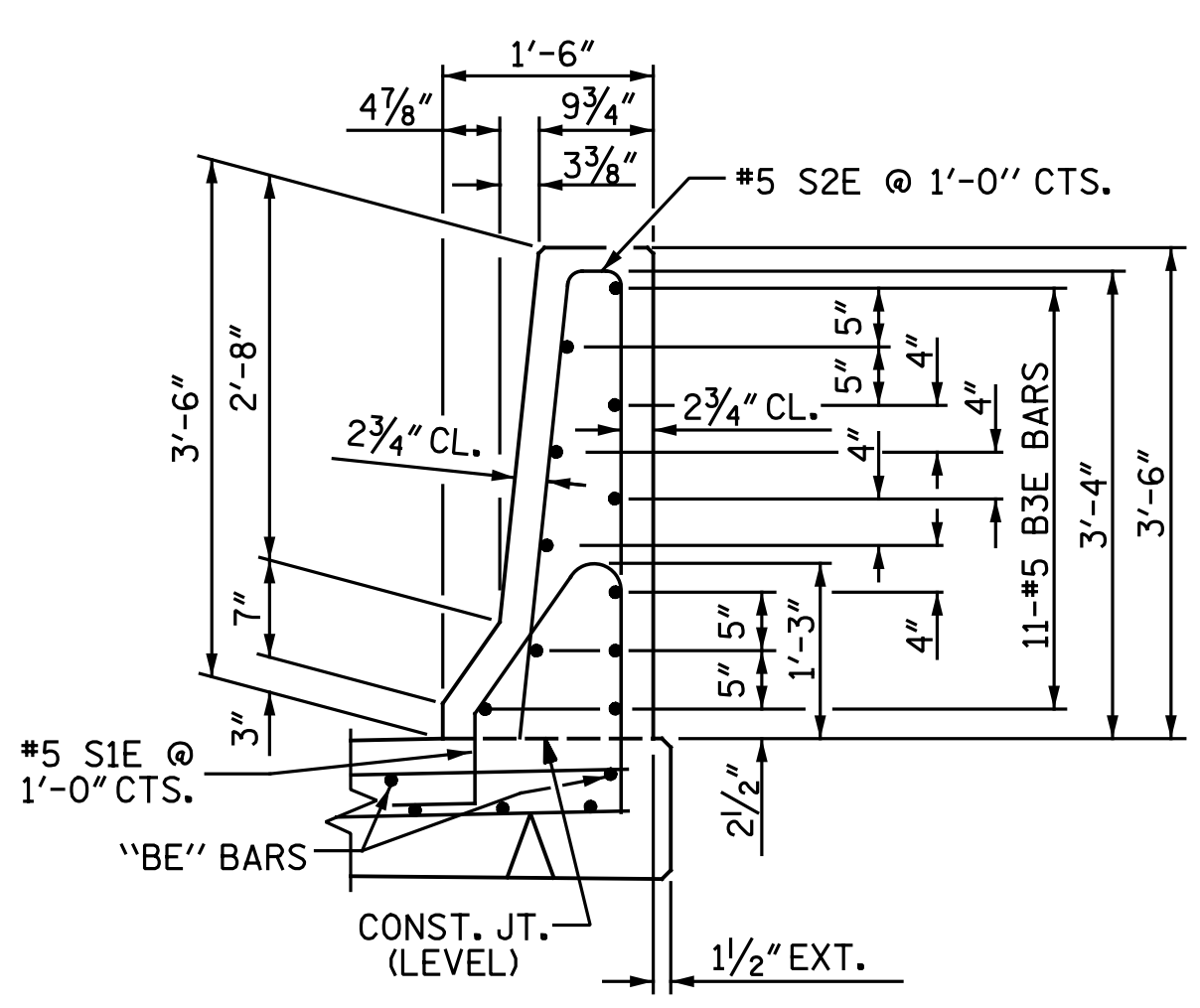
**PLAN OF BARRIER RAIL**



END VIEW

SIDE VIEW

**END OF RAIL DETAILS**



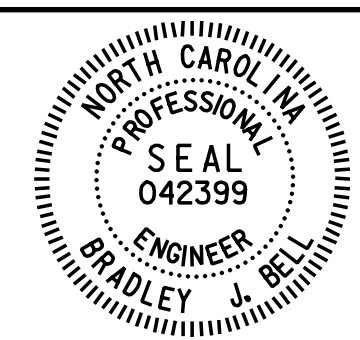
**SECTION THRU RAIL**

PROJECT NO. U-2524D  
GUILFORD COUNTY  
 STATION: 495+22.00 -LREV-  
 SHEET 2 OF 3

STATE OF NORTH CAROLINA  
 DEPARTMENT OF TRANSPORTATION  
 RALEIGH

**BRIDGE APPROACH SLAB DETAILS**

RIGHT LANES



Designed by  
 Bradley J. Bell  
 7/18/2016

**Michael Baker**  
 INTERNATIONAL

Michael Baker Engineering  
 8000 Regency Parkway, Suite 600  
 Cary, North Carolina 27518  
 NC License No.: F-1084

REVISIONS						SHEET NO.
NO.	BY:	DATE:	NO.	BY:	DATE:	S4- 31
1			3			TOTAL SHEETS
2			4			35

DRAWN BY: N. B. SPEAKS DATE: 7-15-15  
 CHECKED BY: B. J. BELL DATE: 3-27-16

nbspeaks 12:23:35 PM 7/18/2016  
 File name: Y:\Projects\NCDOT\U-2524D\Site-2\DWG\Right\Final\404\_032\_U2524D\_SML\_AS03.dgn