

PLAN AT END BENT 1

PLAN AT END BENT 2

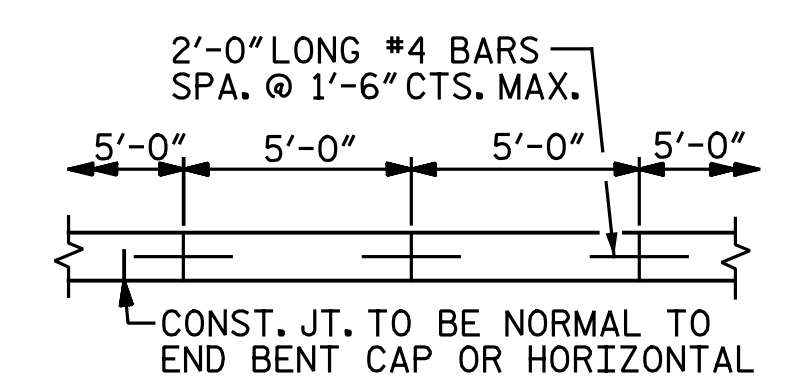
NOTES:

SLOPE PROTECTION SHALL BE PLACED UNDER THE ENDS OF THE BRIDGE AS SHOWN IN THE DETAILS. MEASUREMENT AND PAYMENT SHALL BE AS PRESCRIBED IN SECTION 462 OF THE STANDARD SPECIFICATIONS.

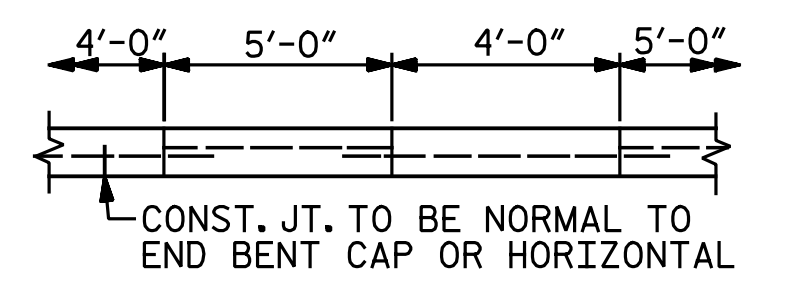
SLOPE PROTECTION SHALL CONSIST OF 4" POURED-IN-PLACE CONCRETE PAVING AS SHOWN IN THE DETAILS ON THIS SHEET. CONCRETE SHALL BE CLASS "B". THE CONCRETE SURFACE SHALL BE FLOATED WITH A WOODEN FLOAT AND FINISHED. WELDED WIRE FABRIC REINFORCING SHALL BE 6 X 6 - W1.4 X W1.4, 60" WIDE. SLOPE PROTECTION SHALL BE POURED IN 5' STRIPS AS SHOWN IN THE "POURING DETAIL" WITH 2'-0" LONG #4 BARS PLACED ALONG THE SLOPE BETWEEN STRIPS AT 1'-6" MAXIMUM SPACING. SLOPE PROTECTION MAY BE POURED IN ALTERNATE 4' AND 5' STRIPS AS SHOWN IN THE "OPTIONAL POURING DETAIL" WITH ADJACENT RUNS OF WELDED WIRE FABRIC LAPPING AT LEAST 6". THE COST OF THE WELDED WIRE FABRIC AND #4 BARS, IF USED, SHALL BE INCLUDED IN THE CONTRACT UNIT PRICE BID PER SQUARE YARD FOR SLOPE PROTECTION.

| BRIDGE @ STA. 495+22.00 -LREV- (RIGHT LANES) | 4 INCH SLOPE PROTECTION | * WELDED WIRE FABRIC 60 INCHES WIDE |
|--|-------------------------|-------------------------------------|
|  | SQUARE YARDS            | APPROX. L.F.                        |
| END BENT 1                                   | 15.5                    | 28                                  |
| END BENT 2                                   | 15.5                    | 28                                  |

\* QUANTITY SHOWN IS BASED ON 5' POURS.



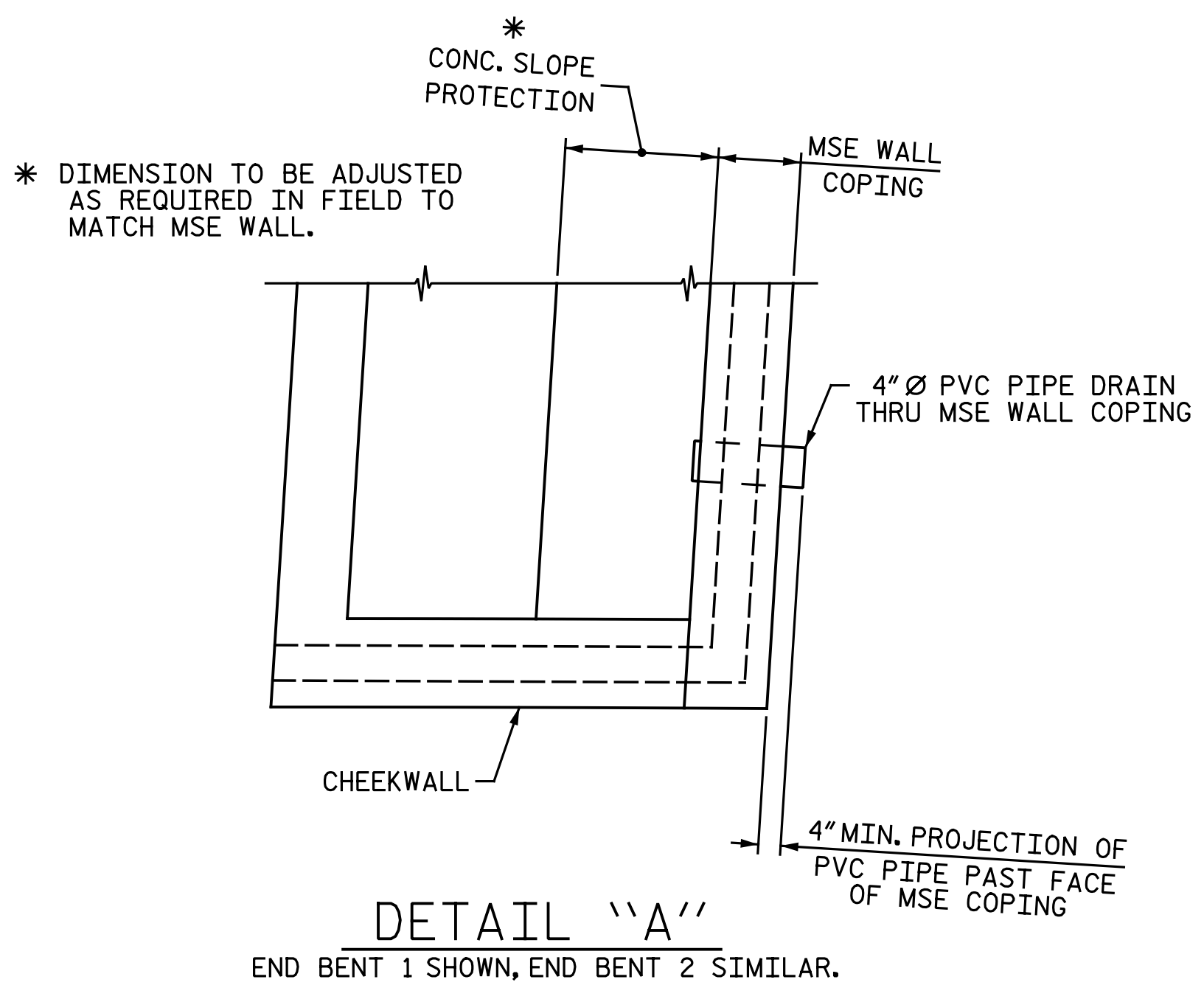
POURING DETAIL



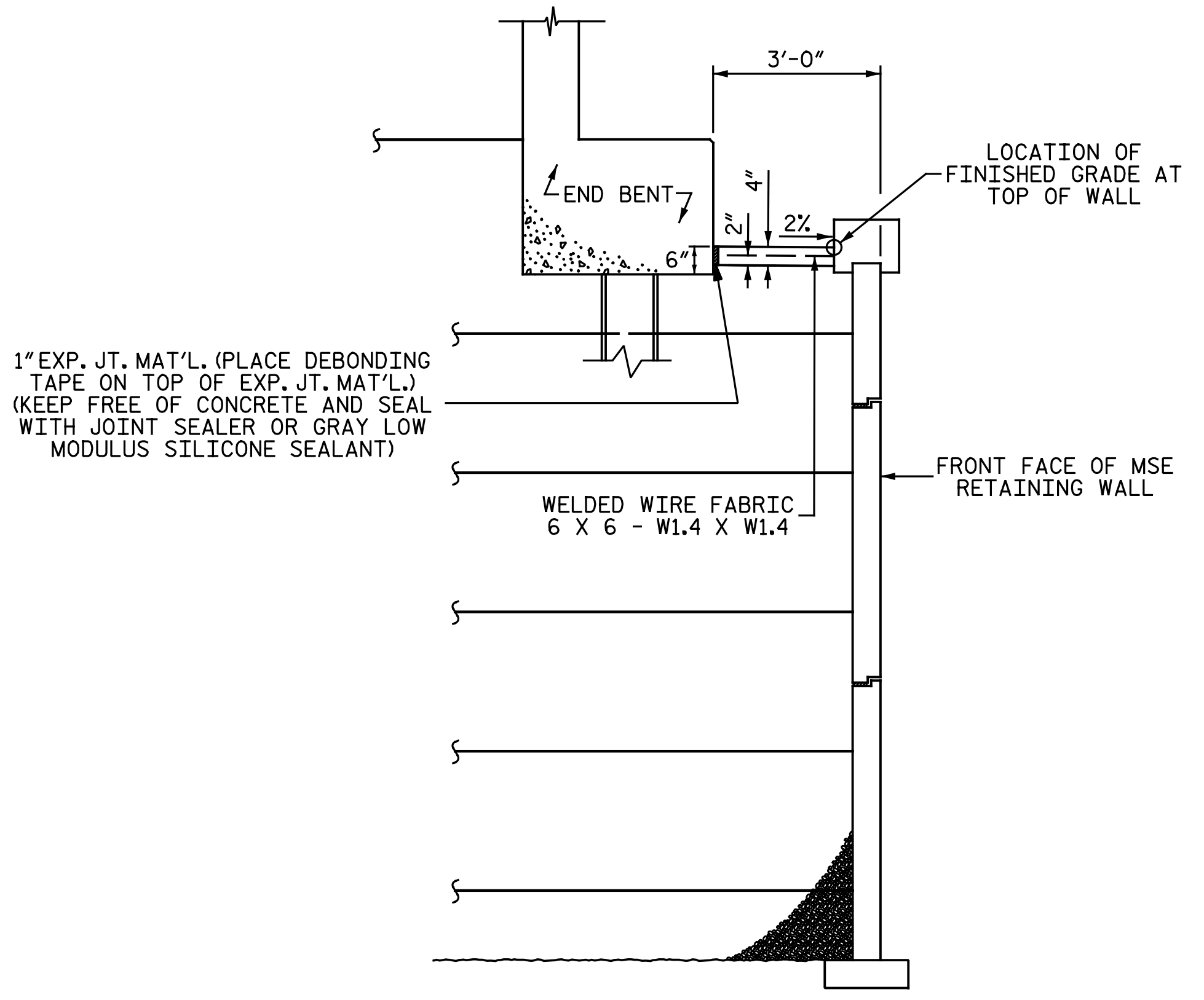
OPTIONAL POURING DETAIL

POUR A 4'-0" STRIP FIRST.

PROJECT NO. U-2524D  
 GUILFORD COUNTY  
 STATION: 495+22.00 -LREV-



DETAIL "A"  
 END BENT 1 SHOWN, END BENT 2 SIMILAR.



SECTION B-B

|  |  |  |  |
|--|--|--|--|
| DOCUMENT NOT CONSIDERED FINAL UNLESS ALL SIGNATURES COMPLETED  |  | STATE OF NORTH CAROLINA<br>DEPARTMENT OF TRANSPORTATION<br>RALEIGH |  |
|  |  | SLOPE PROTECTION<br>DETAILS<br>RIGHT LANES                         |  |
|  |  | REVISIONS  |  |
| <b>Michael Baker INTERNATIONAL</b>   |  | SHEET NO. S4-28  |  |
| Michael Baker Engineering<br>8000 Regency Parkway, Suite 600<br>Cary, North Carolina 27518<br>NC License No.: F-1084 |  | TOTAL SHEETS 35  |  |

nbspecks 7/18/2016 12:23:32 PM  
 File name: Y:\P\Projects\NCDOT\U-2524D\Site\2\DWG\Right\Final\404\_023\_U2524D\_SMLL.SP.dgn

DRAWN BY: C. E. MAYHEW DATE: 3-24-16  
 CHECKED BY: B. J. BELL DATE: 3-24-16