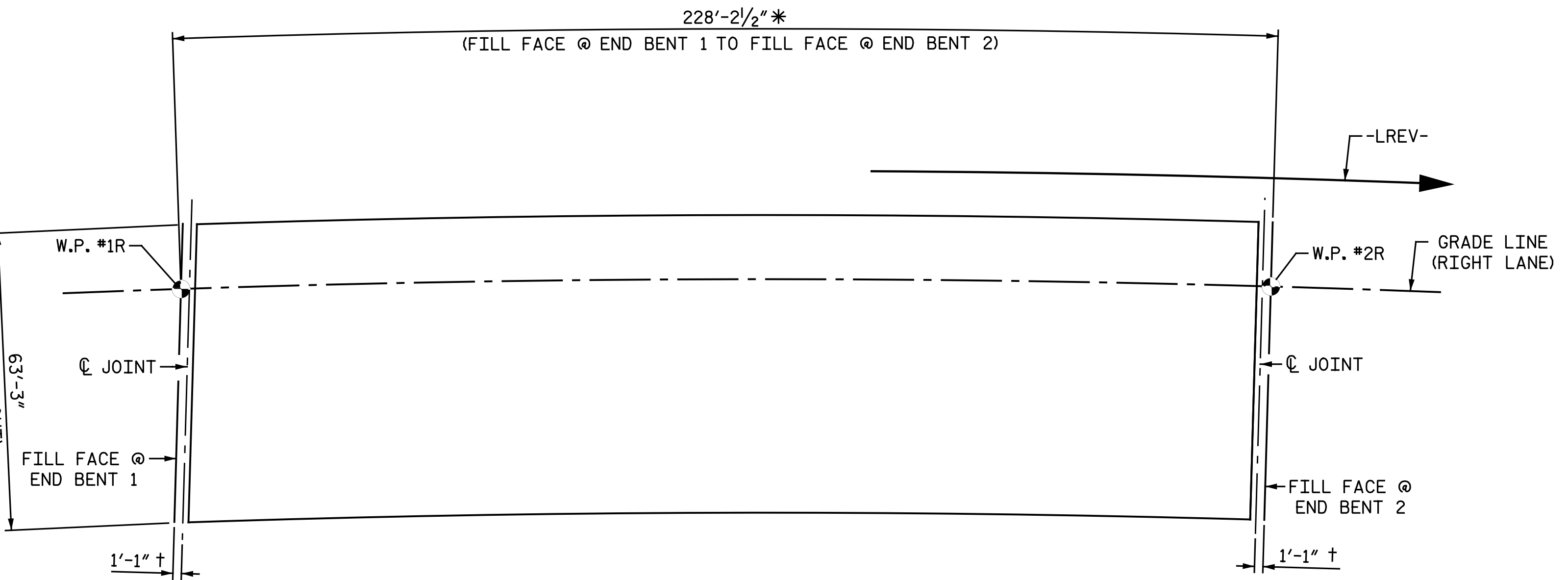


SLAB POURING SEQUENCE
 * ARC DIMENSIONS MEASURED ALONG GRADE LINE (RIGHT LANE)
 † MEASURED PERPENDICULAR TO JOINT
 (⊙) → INDICATES POUR AND DIRECTION

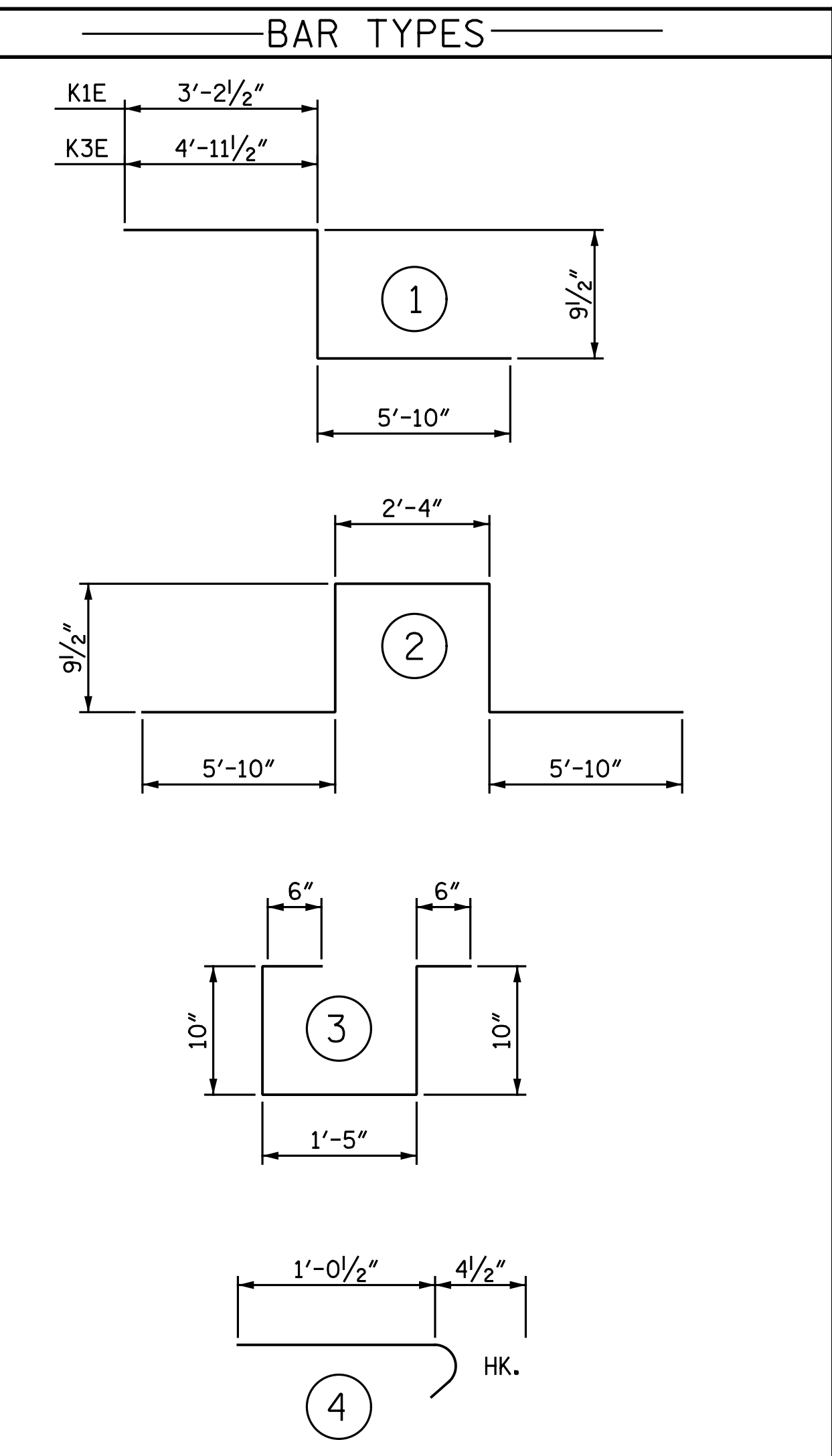


LAYOUT FOR COMPUTING AREA OF REINFORCED CONCRETE DECK SLAB
 (SQ. FT. = 14,286)
 * ARC DIMENSIONS MEASURED ALONG GRADE LINE (RIGHT LANE)
 † MEASURED PERPENDICULAR TO JOINT

REINFORCING BAR SCHEDULE

SPAN A

BAR	NO.	SIZE	TYPE	LENGTH	WEIGHT
A1E	984	#5	STR	32' - 10"	33,697
A2	492	#5	STR	26' - 11"	13,812
A3	492	#5	STR	38' - 4"	19,671
B1E	172	#4	STR	57' - 11"	6,654
B2	340	#5	STR	58' - 1"	20,597
G1E	4	#5	STR	32' - 10"	137
J1E	122	#4	4	1' - 5"	115
K1E	4	#5	1	9' - 10"	41
K2E	16	#5	2	15' - 7"	260
K3E	4	#5	1	11' - 7"	48
S1E	90	#4	3	4' - 1"	245
REINFORCING STEEL				LBS.	54,080
EPOXY COATED REINF. STEEL				LBS.	41,197



SUPERSTRUCTURE REINFORCING STEEL LENGTHS ARE BASED ON THE FOLLOWING MINIMUM SPLICE LENGTHS

BAR SIZE	SUPERSTRUCTURE EXCEPT APPROACH SLABS, PARAPET, AND BARRIER RAIL		APPROACH SLABS		PARAPET AND BARRIER RAIL
	EPOXY COATED	UNCOATED	EPOXY COATED	UNCOATED	
#4	2'-0"	1'-9"	2'-0"	1'-9"	2'-9"
#5	2'-6"	2'-2"	2'-6"	2'-2"	3'-5"
#6	3'-0"	2'-7"	3'-10"	2'-7"	4'-4"
#7	5'-3"	3'-6"			
#8	6'-10"	4'-7"			

GROOVING BRIDGE FLOORS

APPROACH SLABS	2,932	SQ.FT.
BRIDGE DECK	12,818	SQ.FT.
TOTAL	15,750	SQ.FT.

SUPERSTRUCTURE BILL OF MATERIAL

	CLASS AA CONCRETE (CU. YDS.)	REINFORCING STEEL (LBS.)	EPOXY COATED REINFORCING STEEL (LBS.)
POUR 1	273.2		
POUR 2	184.3		
POUR 3	21.1		
TOTALS**	478.6	54,080	41,197

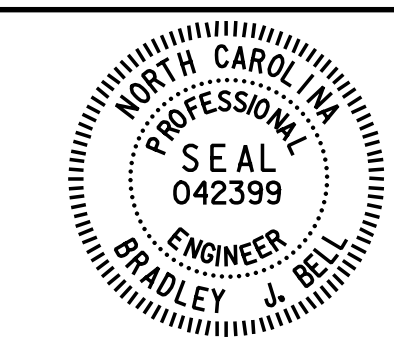
**QUANTITIES FOR BARRIER RAIL ARE NOT INCLUDED.

PROJECT NO. U-2524D
GUILFORD COUNTY
 STATION: 495+22.00 -LREV-

nbspecks 7/18/2016 12:23:24 PM
 File name: Y:\Projects\NCDOT\U-2524D\Site-2\DWG\Right\Final\404_022_U2524D_SMLL.BIM.dgn

DRAWN BY: M. D. MAYHEW DATE: 3-21-16
 CHECKED BY: B. J. BELL DATE: 3-23-16

DOCUMENT NOT CONSIDERED FINAL
 UNLESS ALL SIGNATURES COMPLETED



Drawn by: Bradley J. Bell
 7/18/2016

Michael Baker INTERNATIONAL

Michael Baker Engineering
 8000 Regency Parkway, Suite 600
 Cary, North Carolina 27518
 NC License No.: F-1084

STATE OF NORTH CAROLINA
 DEPARTMENT OF TRANSPORTATION
 RALEIGH
 SUPERSTRUCTURE
 BILL OF MATERIAL
 RIGHT LANES

REVISIONS						SHEET NO. S4-21
NO.	BY:	DATE:	NO.	BY:	DATE:	
1			3			TOTAL SHEETS 35
2			4			