

SECTION ALONG GRADE LINE (RIGHT LANE)
(END BENTS ON SECTION AT RIGHT ANGLES TO END BENTS)

-RPAY8- HORIZONTAL CURVE DATA

PI Sta	14+17.82
Δ	91° 15' 39.5" (LT)
D	17° 37' 46.1"
L	517.66'
T	332.23'
R	325.00'

-LREV- HORIZONTAL CURVE DATA

PI Sta	496+37.33
Δ	8° 31' 38.8" (RT)
D	1° 33' 40.3"
L	546.21'
T	273.61'
R	3,670.00'

-RPBY8- HORIZONTAL CURVE DATA

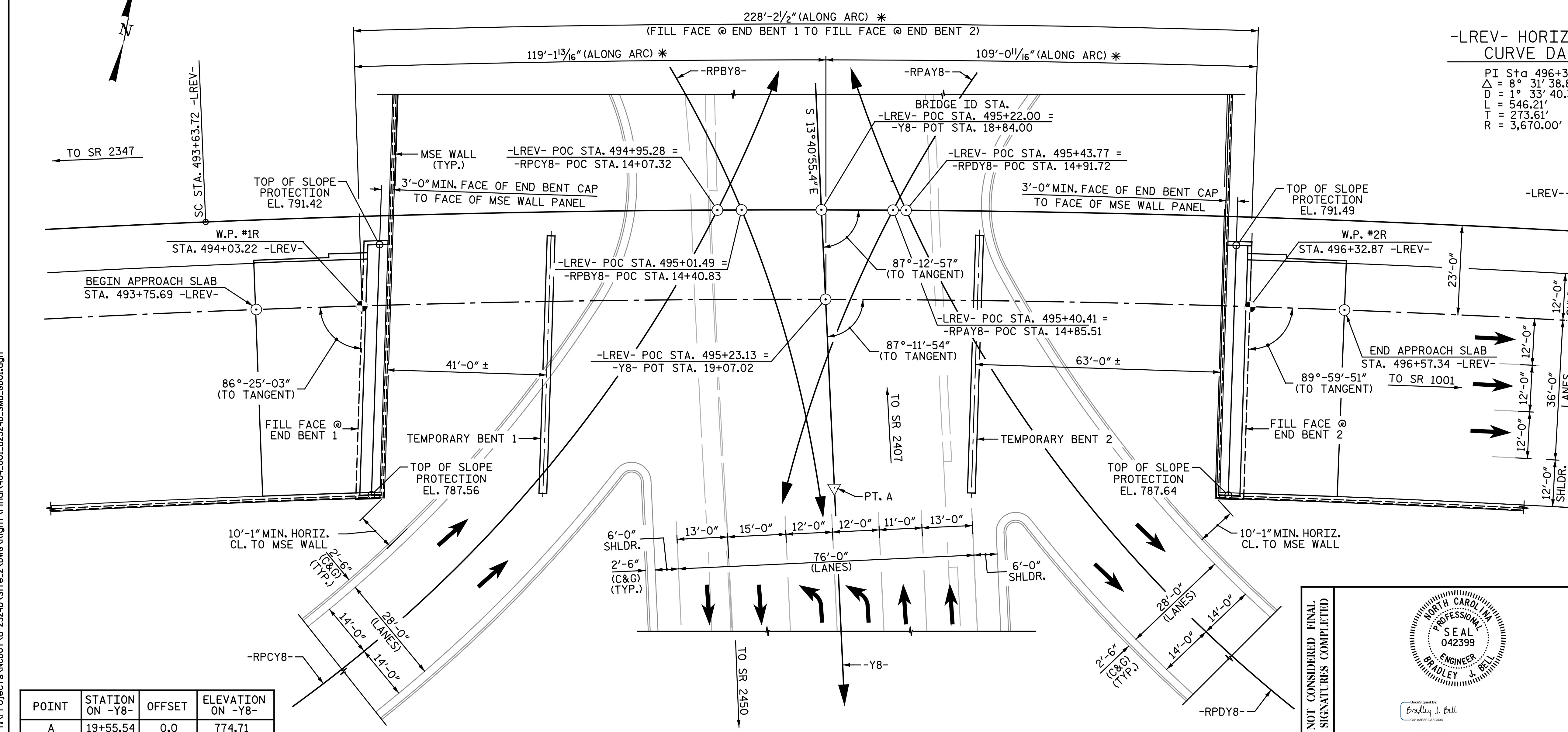
PI Sta	13+23.49
Δ	81° 15' 15.8" (RT)
D	19° 25' 20.3"
L	418.36'
T	253.09'
R	295.00'

-RPCY8- HORIZONTAL CURVE DATA

PI Sta	13+33.32
Δ	77° 21' 58.8" (LT)
D	16° 00' 15.9"
L	483.41'
T	286.64'
R	358.00'

-RPDY8- HORIZONTAL CURVE DATA

PI Sta	13+84.61
Δ	68° 34' 57.3" (RT)
D	16° 22' 12.8"
L	418.95'
T	238.68'
R	350.00'



PLAN

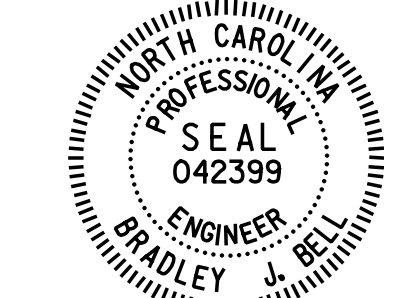
(PILES NOT SHOWN IN PLAN VIEW FOR CLARITY)
* MEASURED ALONG GRADE LINE (RIGHT LANE)

POINT	STATION ON -Y8-	OFFSET	ELEVATION ON -Y8-
A	19+55.54	0.0	774.71

▽ - DENOTES POINT OF MINIMUM VERTICAL CLEARANCE

DRAWN BY : M. D. M. / J.N.A. DATE : 9-2-15
CHECKED BY : B. J. BELL DATE : 3-20-16

PROJECT NO. U-2524D
GUILFORD COUNTY
STATION: 495+22.00 -LREV-
18+84.00 -Y8-
SHEET 1 OF 5 BRIDGE NO. 1181



7/18/2016

Michael Baker INTERNATIONAL

Michael Baker Engineering
8000 Regency Parkway, Suite 600
Cary, North Carolina 27518
NC License No. : F-1084

STATE OF NORTH CAROLINA
DEPARTMENT OF TRANSPORTATION
RALEIGH
GENERAL DRAWING
FOR BRIDGE ON GREENSBORO
WESTERN URBAN LOOP OVER
LAWDALE DRIVE BETWEEN
SR 2347 AND SR 1001
RIGHT LANES

REVISIONS					
NO.	BY:	DATE:	NO.	BY:	DATE:
1			3		
2			4		

SHEET NO. S4-1
TOTAL SHEETS 35

nbspecks 7/18/2016 12:23:04 PM
 File name: Y:\Projects\NCDOT\U-2524D\Site\2\DWG\Right\Final\404_001_U2524D_SML.GDD01.dgn