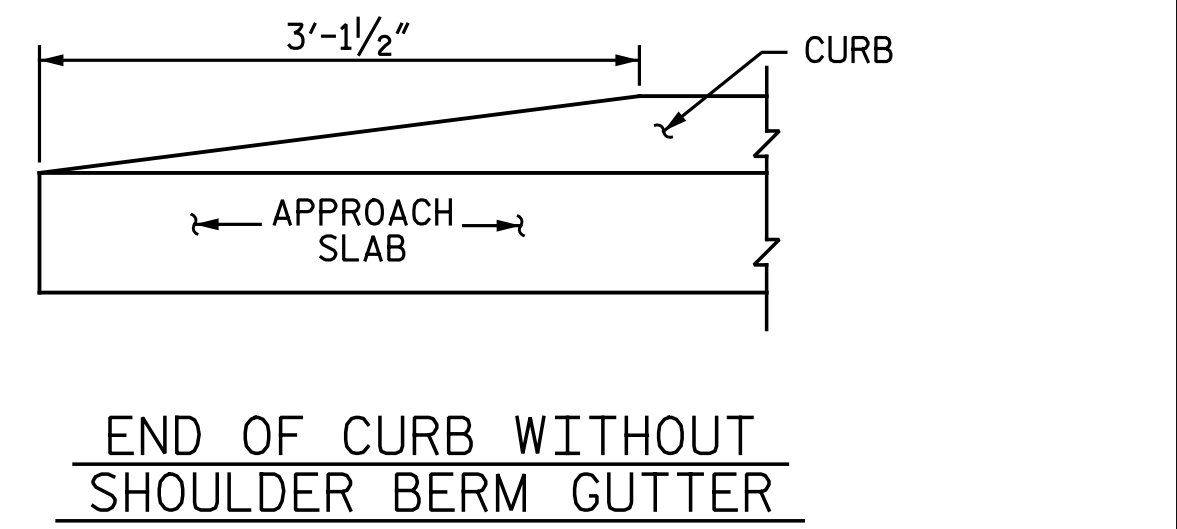
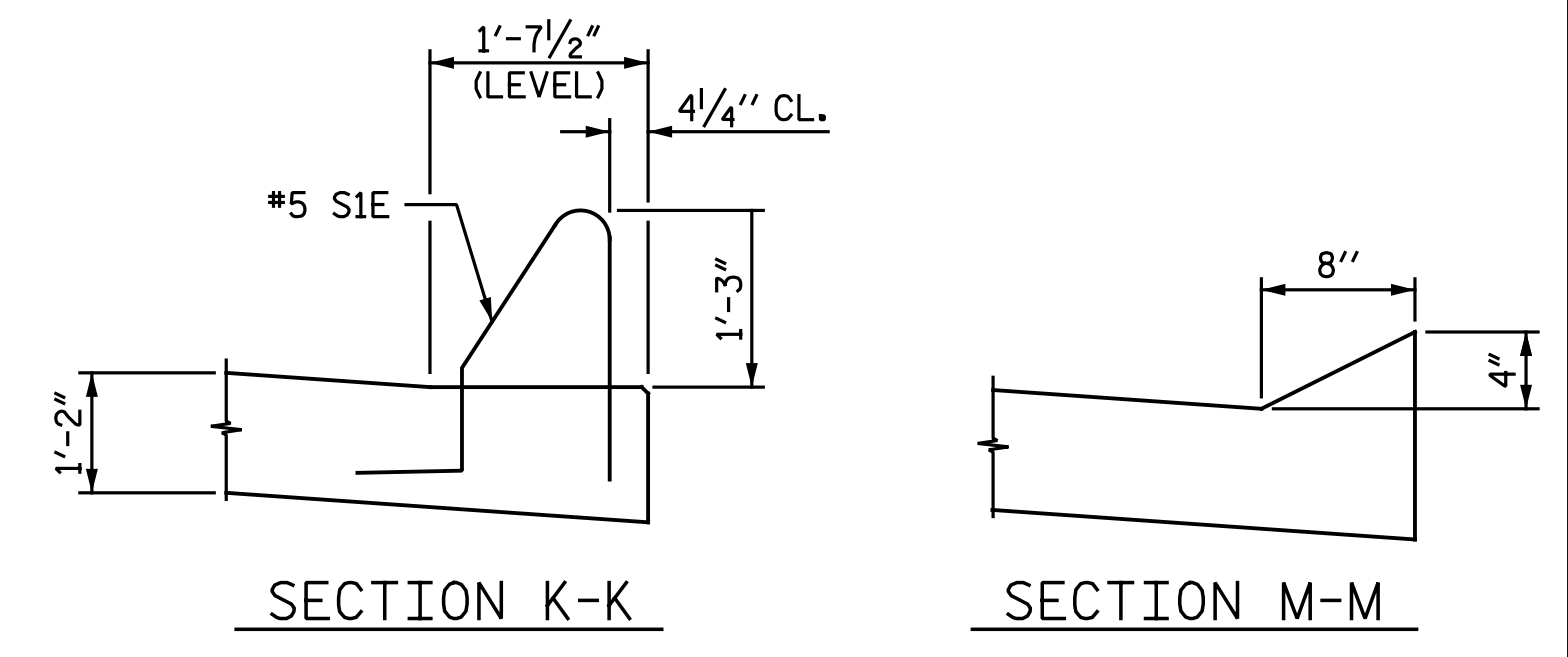


PLAN @ END BENT 1

PLAN @ END BENT 2

NOTES

- APPROACH SLAB SHALL NOT BE CONSTRUCTED PRIOR TO COMPLETION OF THE BRIDGE DECK.
- AREA BETWEEN THE WINGWALL AND APPROACH SLAB SHALL BE GRADED TO DRAIN THE WATER AWAY FROM THE FILL FACE OF THE BRIDGE AND SHALL BE PAVED. SEE ROADWAY PLANS.
- FOR EXPANSION JOINT SEALS, SEE SPECIAL PROVISIONS.
- FOR MOMENT SLAB DETAILS, SEE "CONCRETE BARRIER RAIL WITH MOMENT SLAB" SHEET.
- ARC OFFSETS ARE NEGLIGIBLE AND THEREFORE NOT SHOWN.
- ① 6-#5 B100E, 6-#5 B101E, 6-#5 B102E, 6-#5 B103E, 6-#5 B104E, 6-#5 B105E, 6-#5 B106E, 6-#5 B107E, 6-#5 B108E, 6-#5 B109E, 6-#5 B110E, 6-#5 B111E, 6-#5 B112E, 6-#5 B113E, 6-#5 B114E, 6-#5 B115E, 6-#5 B116E, 6-#5 B117E, 6-#5 B118E, 7-#5 B119E
- ② 2-#6 B200, 2-#6 B201, 2-#6 B202, 2-#6 B203, 3-#6 B204, 3-#6 B205, 2-#6 B206, 3-#6 B207, 2-#6 B208, 2-#6 B209, 3-#6 B210, 2-#6 B211, 3-#6 B212, 2-#6 B213, 3-#6 B214, 2-#6 B215, 2-#6 B216, 3-#6 B217, 2-#6 B218, 3-#6 B219, 2-#6 B220, 3-#6 B221, 2-#6 B222, 3-#6 B223, 2-#6 B224, 2-#6 B225, 3-#6 B226, 2-#6 B227, 3-#6 B228, 2-#6 B229, 3-#6 B230, 2-#6 B231, 2-#6 B232, 3-#6 B233, 2-#6 B234, 3-#6 B235, 2-#6 B236, 3-#6 B237, 2-#6 B238, 2-#6 B239, 3-#6 B240, 2-#6 B241, 3-#6 B242, 2-#6 B243, 2-#6 B244, 2-#6 B245, 2-#6 B246, 3-#6 B247, 2-#6 B248, 3-#6 B249
- T.O.S. - DENOTES TOP OF SLAB
B.O.S. - DENOTES BOTTOM OF SLAB
* RADIAL DIMENSION



PROJECT NO. U-2524D
GUILFORD COUNTY
STATION: 495+22.00 -LREV-

onayhew 5/17/2016 5:18:36 PM
 File name: Y:\Projects\NC DOT\U-2524D\Site-2\DWG\Left\Final\403.030_U2524D_SML_A501.dgn

DRAWN BY: N.B.S. / M.D.M. DATE: 3-15-16
 CHECKED BY: B. J. BELL DATE: 3-21-16

DOCUMENT NOT CONSIDERED FINAL
 UNLESS ALL SIGNATURES COMPLETED

Michael Baker Engineering
 8000 Regency Parkway, Suite 600
 Cary, North Carolina 27518
 NC License No.: F-1084
 5/17/2016

STATE OF NORTH CAROLINA DEPARTMENT OF TRANSPORTATION RALEIGH		BRIDGE APPROACH SLAB FOR RIGID PAVEMENT		LEFT LANES	
REVISIONS					
NO.	BY:	DATE:	NO.	BY:	DATE:
1			3		
2			4		
SHEET NO. S3-29					TOTAL SHEETS 35