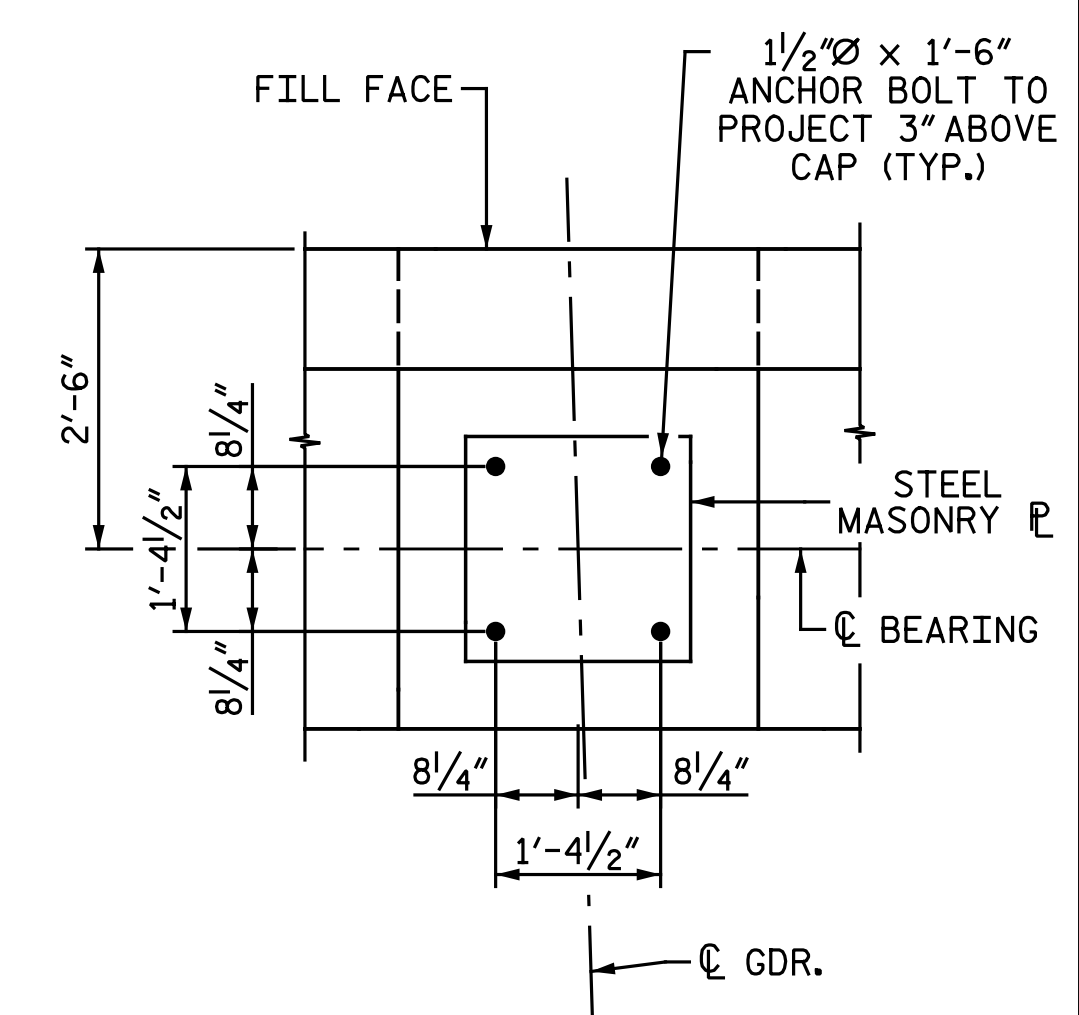
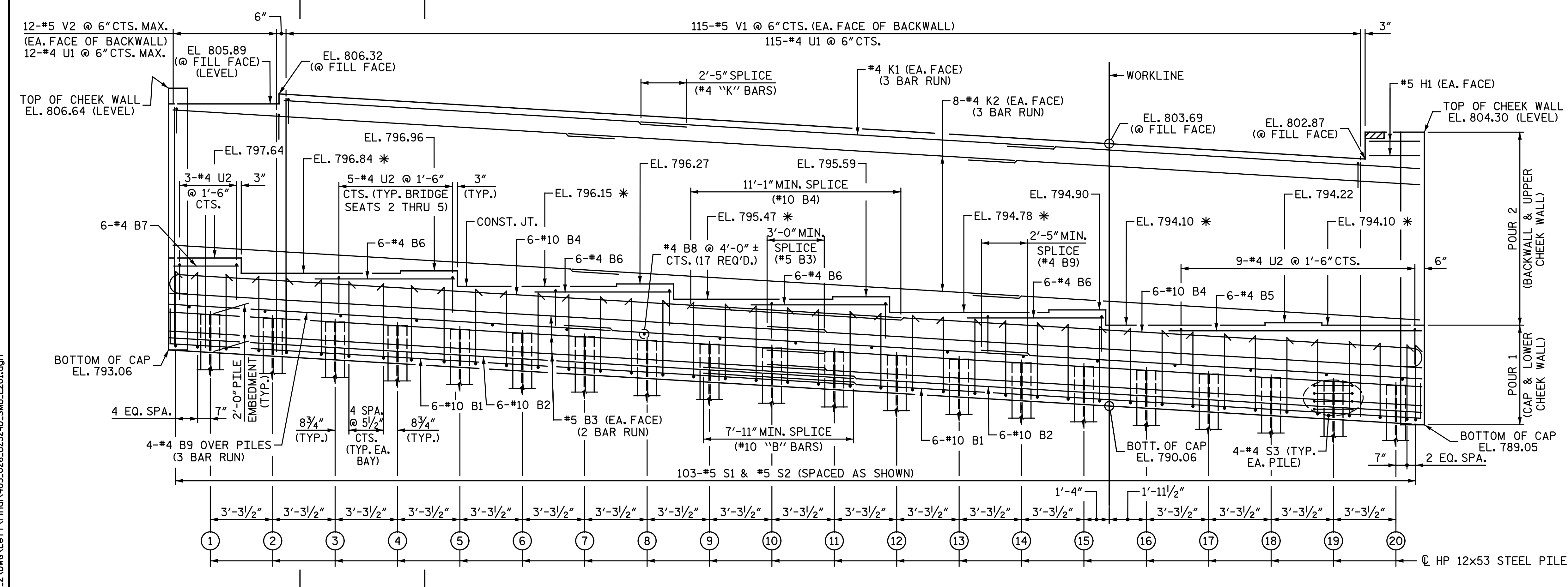


**NOTES:**  
 FOR SECTION A-A AND SECTION B-B, SEE "END BENT 2 DETAILS" SHEET.  
 FOR ADDITIONAL NOTES, SEE "END BENT 2 DETAILS" SHEET.



**PLAN**

**DETAIL "A"**



TOP OF PILE ELEVATIONS	
PILE	ELEVATION
1	794.93
2	794.73
3	794.53
4	794.33
5	794.13
6	793.93
7	793.73
8	793.53
9	793.33
10	793.13
11	792.93
12	792.74
13	792.54
14	792.34
15	792.14
16	791.94
17	791.74
18	791.54
19	791.34
20	791.14

PROJECT NO. U-2524D  
GUILFORD COUNTY  
 STATION: 495+22.00 -LREV-

**ELEVATION**

\* FOR LOCATION OF ELEVATION BETWEEN BRIDGE SEATS, SEE "END BENT 2 DETAILS" SHEET.

SHEET 1 OF 2

onayhew 5/17/2016 5:18:27 PM  
 File name: Y:\Projects\NCDDOT\U-2524D\Site-2\DWG\Left\Final\403.026.U2524D\_SMU.E201.dgn

DRAWN BY: M. D. MAYHEW DATE: 3-7-16  
 CHECKED BY: A. M. HOUSTON DATE: 3-23-16

DOCUMENT NOT CONSIDERED FINAL  
 UNLESS ALL SIGNATURES COMPLETED

NORTH CAROLINA  
 PROFESSIONAL ENGINEER  
 SEAL  
 042399  
 BRADLEY J. BELL

Designed by  
 Bradley J. Bell  
 5/17/2016

Michael Baker Engineering  
 8000 Regency Parkway, Suite 600  
 Cary, North Carolina 27518  
 NC License No.: F-1084

STATE OF NORTH CAROLINA  
 DEPARTMENT OF TRANSPORTATION  
 RALEIGH  
 SUBSTRUCTURE  
 END BENT 2  
 LEFT LANES

REVISIONS					
NO.	BY:	DATE:	NO.	BY:	DATE:
1			3		
2			4		

SHEET NO. **S3-25**  
TOTAL SHEETS 35