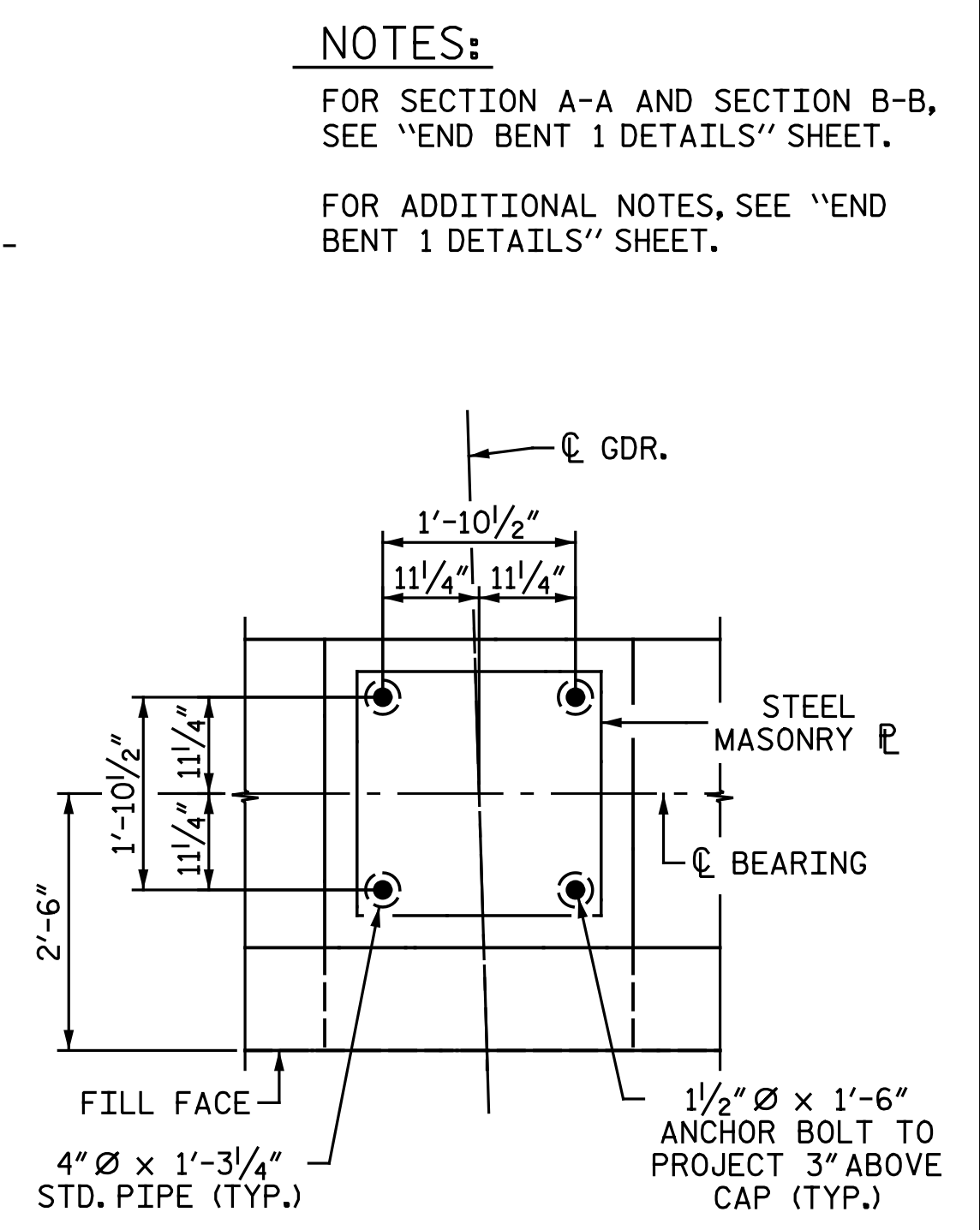


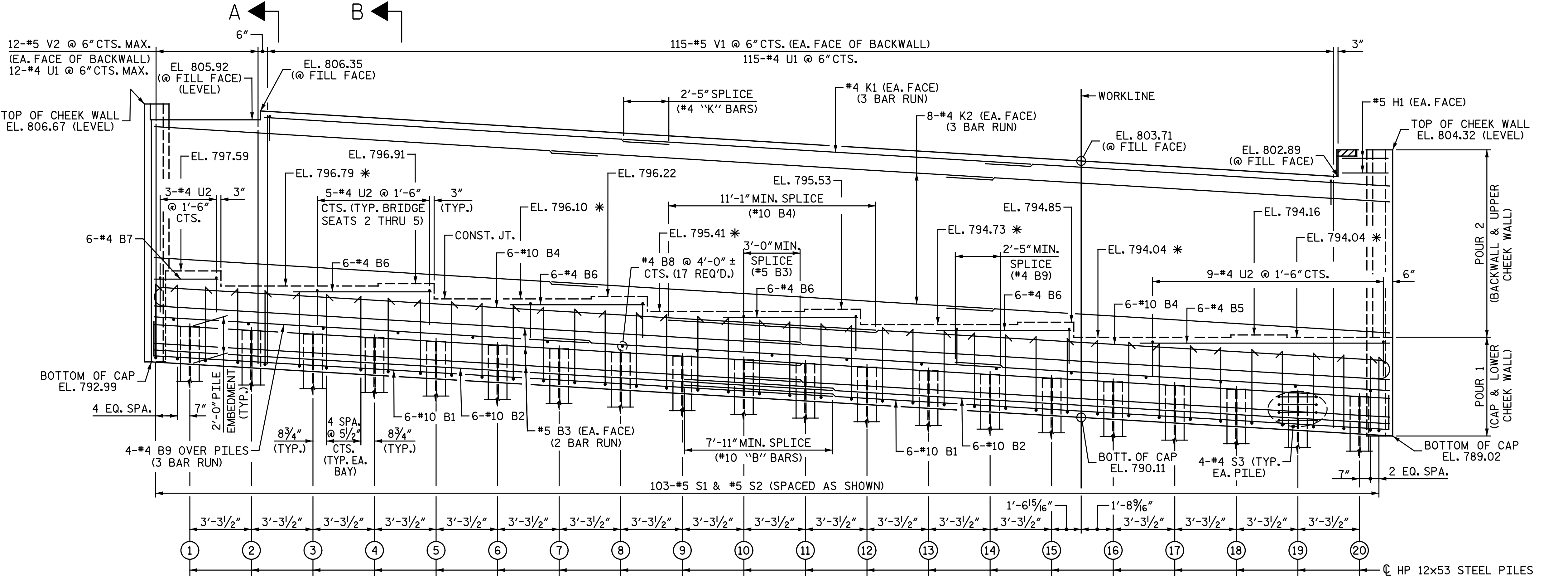
PLAN



DETAIL "A"

TOP OF PILE ELEVATIONS

| PILE | ELEVATION |
|------|-----------|
| 1 | 794.86 |
| 2 | 794.66 |
| 3 | 794.46 |
| 4 | 794.27 |
| 5 | 794.07 |
| 6 | 793.88 |
| 7 | 793.68 |
| 8 | 793.48 |
| 9 | 793.29 |
| 10 | 793.09 |
| 11 | 792.89 |
| 12 | 792.70 |
| 13 | 792.50 |
| 14 | 792.30 |
| 15 | 792.11 |
| 16 | 791.91 |
| 17 | 791.72 |
| 18 | 791.52 |
| 19 | 791.32 |
| 20 | 791.13 |



ELEVATION

* FOR LOCATION OF ELEVATION BETWEEN BRIDGE SEATS, SEE "END BENT 1 DETAILS" SHEET.

PROJECT NO. U-2524D
 GUILFORD COUNTY
 STATION: 495+22.00 -LREV-
 SHEET 1 OF 2

5/17/2016 5:18:25 PM
 File Name: Y:\Projects\NCDDOT\U-2524D\Site-2\DWG\Left\Final\403.023.U2524D_SML.E101.dgn

DRAWN BY: M. D. MAYHEW DATE: 3-7-16
 CHECKED BY: A. M. HOUSTON DATE: 3-23-16

DOCUMENT NOT CONSIDERED FINAL
 UNLESS ALL SIGNATURES COMPLETED

Michael Baker Engineering
 8000 Regency Parkway, Suite 600
 Cary, North Carolina 27518
 NC License No.: F-1084

Professional Engineer Seal: BRADLEY J. BELL, No. 042399, State of North Carolina.

5/17/2016

STATE OF NORTH CAROLINA
 DEPARTMENT OF TRANSPORTATION
 RALEIGH
 SUBSTRUCTURE
 END BENT 1
 LEFT LANES

| REVISIONS | | | | | | SHEET NO. |
|-----------|-----|-------|-----|-----|-------|--------------|
| NO. | BY: | DATE: | NO. | BY: | DATE: | |
| 1 | | | 3 | | | TOTAL SHEETS |
| 2 | | | 4 | | | 35 |