

PARTIAL SECTION AT END BENT DIAPHRAGM PARTIAL SECTION AT INTERMEDIATE DIAPHRAGM

TYPICAL SECTION

(ALL HORIZONTAL DIMENSIONS SHOWN ARE RADIAL, U.N.O.)

NOTES:

PROVIDE 1/4" HIGH BEAM BOLSTER UPPER AT 4'-0" CTS. ATOP THE METAL STAY-IN-PLACE FORMS TO SUPPORT THE BOTTOM MAT OF "A" BARS. WHEN USING REMOVABLE FORMS, PROVIDE CONTINUOUS HIGH CHAIRS FOR METAL DECK (C.H.C.M.) @ 4'-0" CTS. WITH A HEIGHT TO SUPPORT THE BOTTOM MAT OF "A" BARS A CLEAR DISTANCE OF 2 1/2" ABOVE THE TOP OF THE REMOVABLE FORM.

PREVIOUSLY CAST CONCRETE SHALL HAVE ATTAINED A MINIMUM COMPRESSIVE STRENGTH OF 3,000 PSI BEFORE ADDITIONAL CONCRETE IS CAST IN THE SPAN.

BARRIER RAIL SHALL NOT BE CAST UNTIL ALL SLAB CONCRETE HAS BEEN CAST AND HAS REACHED A MINIMUM COMPRESSIVE STRENGTH OF 3,000 PSI.

FIRST AND LAST #5 "A" BAR MAY BE SHIFTED SLIGHTLY, AS NECESSARY, TO CLEAR EXPANSION JOINT COMPONENTS.

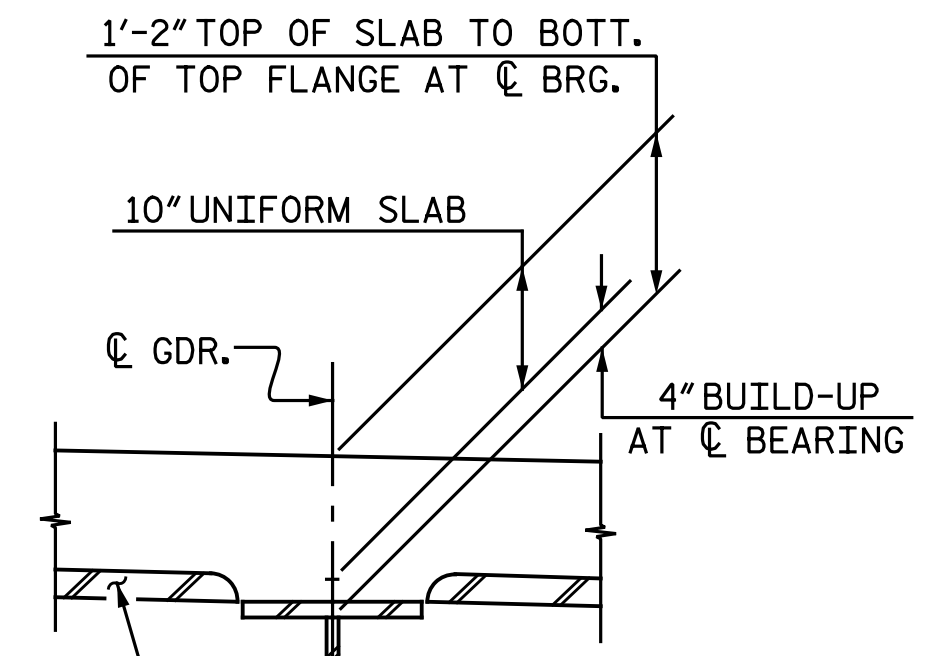
#5 G1E BAR MAY BE SHIFTED SLIGHTLY, AS NECESSARY, TO CLEAR REINFORCING STEEL AND STIRRUPS.

THE CONTRACTOR MAY, WHEN NECESSARY, PROPOSE A SCHEME FOR AVOIDING INTERFERENCE BETWEEN METAL STAY-PLACE FORM SUPPORTS OR FORMS AND BEAM/GIRDER STIFFENERS OR CONNECTOR PLATES. THE PROPOSAL SHALL BE INDICATED, AS APPROPRIATE, ON EITHER THE STEEL WORKING DRAWINGS OR THE METAL-STAY-IN-PLACE FORM WORKING DRAWINGS.

THE CONTRACTOR SHALL ADJUST THE GIRDER BUILDUPS AS NECESSARY TO INCORPORATE A MAXIMUM PERMISSIBLE VARIATION IN DISC BEARING DEPTH OF 1/2". SEE SPECIAL PROVISION FOR DISC BEARINGS.

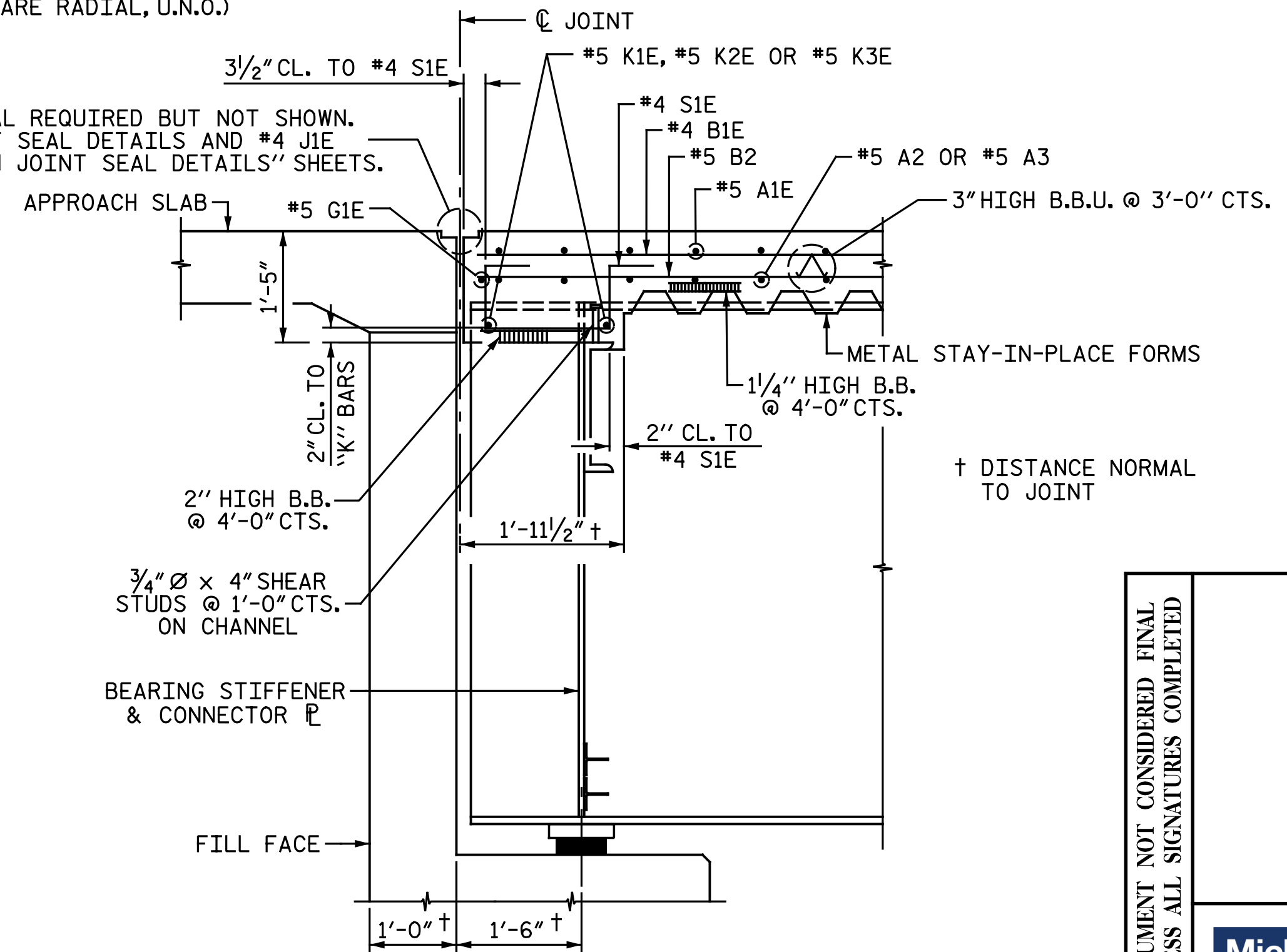
THE CONTRACTOR SHALL ENSURE THE STABILITY OF THE GIRDER WEB DURING CONSTRUCTION BASED ON THE OVERHANG SUPPORT SYSTEM USED.

FOR EXPANSION JOINT SEALS, SEE SPECIAL PROVISIONS.



DETAIL "A"

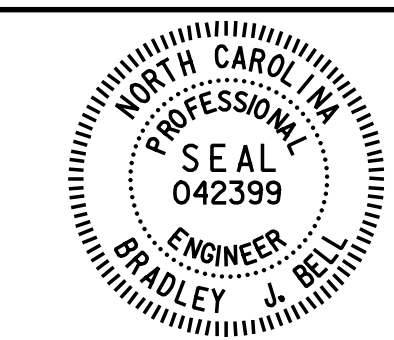
PROJECT NO. U-2524D
 GUILFORD COUNTY
 STATION: 495+22.00 -LREV-



SECTION THRU END BENT DIAPHRAGM

EXPANSION JOINT SEAL REQUIRED BUT NOT SHOWN. FOR EXPANSION JOINT SEAL DETAILS AND #4 JIE BARS, SEE "EXPANSION JOINT SEAL DETAILS" SHEETS.

DOCUMENT NOT CONSIDERED FINAL UNLESS ALL SIGNATURES COMPLETED



Drawn by: Bradley J. Bell
 5/17/2016



Michael Baker Engineering
 8000 Regency Parkway, Suite 600
 Cary, North Carolina 27518
 NC License No.: F-1084

STATE OF NORTH CAROLINA
 DEPARTMENT OF TRANSPORTATION
 RALEIGH
 SUPERSTRUCTURE
 TYPICAL SECTION
 LEFT LANES

REVISIONS						SHEET NO. S3-6
NO.	BY:	DATE:	NO.	BY:	DATE:	
1			3			TOTAL SHEETS 35
2			4			

DRAWN BY: M. D. MAYHEW DATE: 11-5-15
 CHECKED BY: B. J. BELL DATE: 2-19-16

onayhew 5/17/2016 5:18:16 PM
 File name: Y:\Projects\NCDOT\U-2524D\Site-2\DWG\Left\Final\403.007_U2524D_SMU_TS01.dgn