

-LREV- HORIZONTAL CURVE DATA

PI Sta 496+37.33
 Δ = 8° 31' 38.8" (RT)
 D = 1° 33' 40.3"
 L = 546.21'
 T = 273.61'
 R = 3,670.00'

-RPAY8- HORIZONTAL CURVE DATA

PI Sta 14+17.82
 Δ = 91° 15' 39.5" (LT)
 D = 17° 37' 46.1"
 L = 517.66'
 T = 332.23'
 R = 325.00'

-RPBY8- HORIZONTAL CURVE DATA

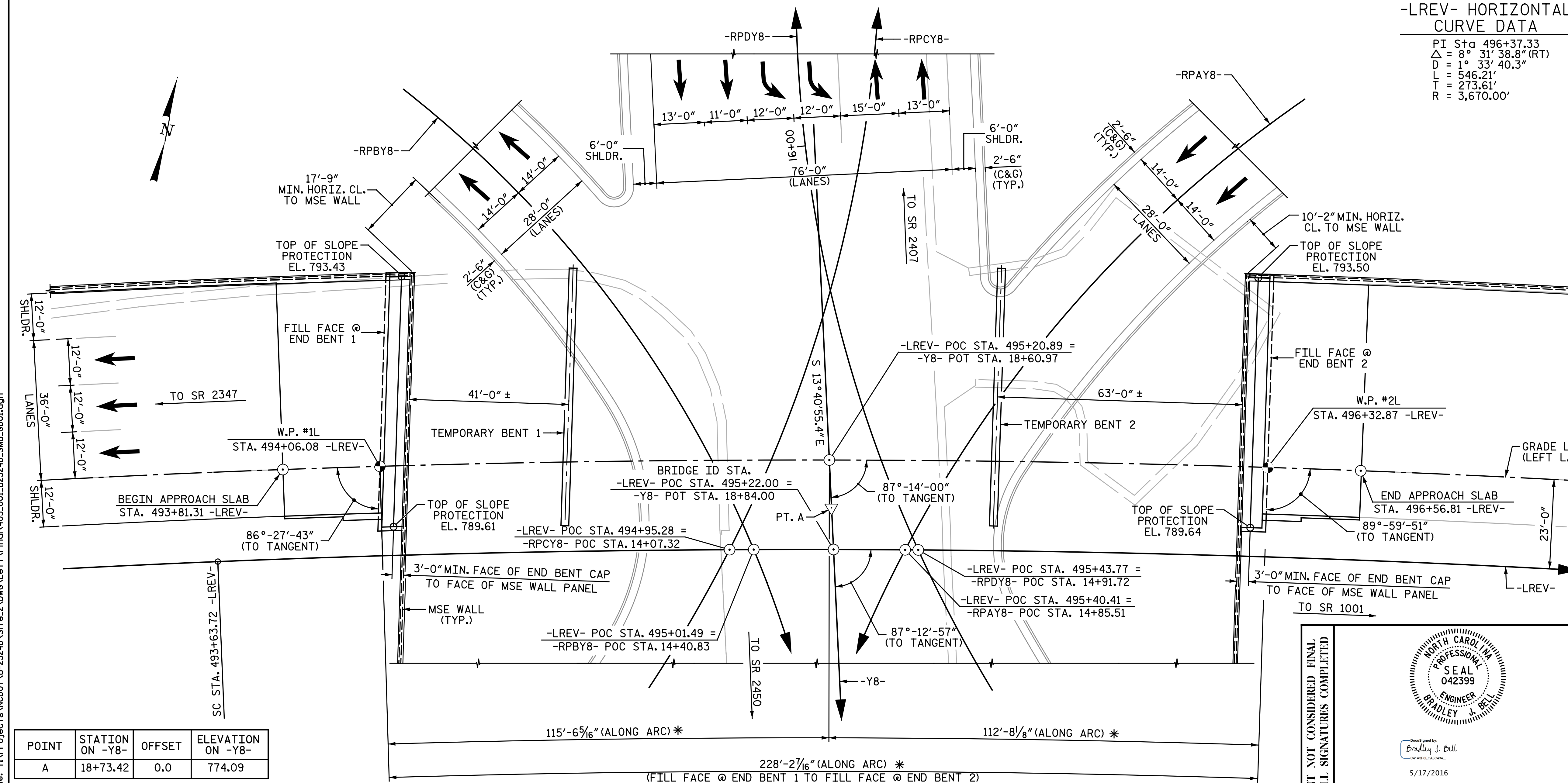
PI Sta 13+23.49
 Δ = 81° 15' 15.8" (RT)
 D = 19° 25' 20.3"
 L = 418.36'
 T = 253.09'
 R = 295.00'

-RPCY8- HORIZONTAL CURVE DATA

PI Sta 13+33.32
 Δ = 77° 21' 58.8" (LT)
 D = 16° 00' 15.9"
 L = 483.41'
 T = 286.64'
 R = 358.00'

-RPDY8- HORIZONTAL CURVE DATA

PI Sta 13+84.61
 Δ = 68° 34' 57.3" (RT)
 D = 16° 22' 12.8"
 L = 418.95'
 T = 238.68'
 R = 350.00'



PROJECT NO. U-2524D
 GUILFORD COUNTY
 STATION: 495+22.00 -LREV-
 18+84.00 -Y8-
 SHEET 1 OF 5 BRIDGE NO. 1180

POINT	STATION ON -Y8-	OFFSET	ELEVATION ON -Y8-
A	18+73.42	0.0	774.09

▽ - DENOTES POINT OF MINIMUM VERTICAL CLEARANCE

DRAWN BY: M.D.M. / J.N.A. DATE: 9-2-15
 CHECKED BY: B. J. BELL DATE: 2-19-16

DOCUMENT NOT CONSIDERED FINAL UNLESS ALL SIGNATURES COMPLETED

Michael Baker International
 Michael Baker Engineering
 8000 Regency Parkway, Suite 600
 Cary, North Carolina 27518
 NC License No.: F-1084

5/17/2016

STATE OF NORTH CAROLINA
 DEPARTMENT OF TRANSPORTATION
 RALEIGH

GENERAL DRAWING
 FOR BRIDGE ON GREENSBORO WESTERN URBAN LOOP OVER LAWNDALE DRIVE BETWEEN SR 2347 AND SR 1001
 LEFT LANES

REVISIONS		SHEET NO.	
NO.	DATE	NO.	DATE
1		3	
2		4	

SHEET NO. S3-1
 TOTAL SHEETS 35