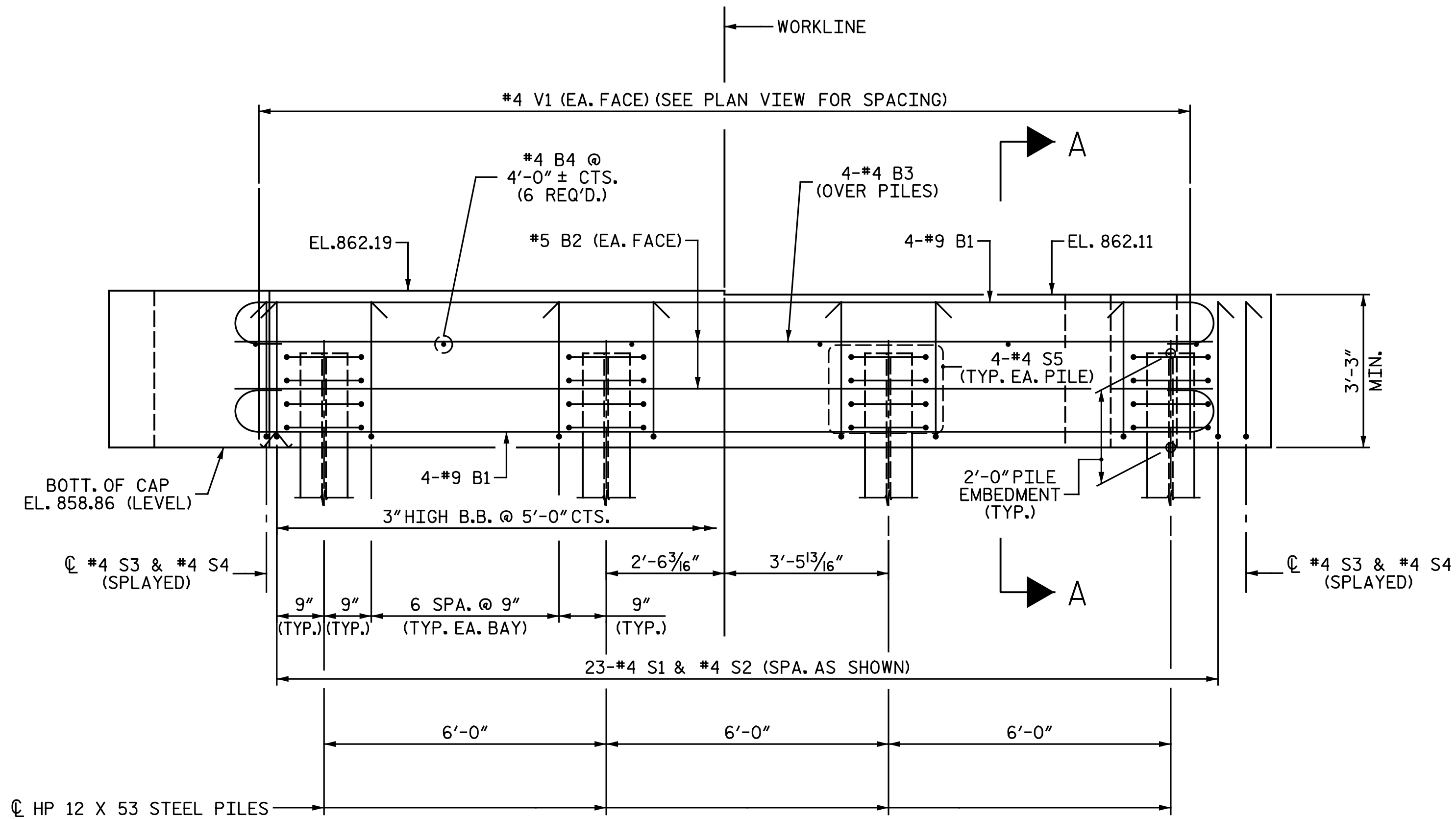


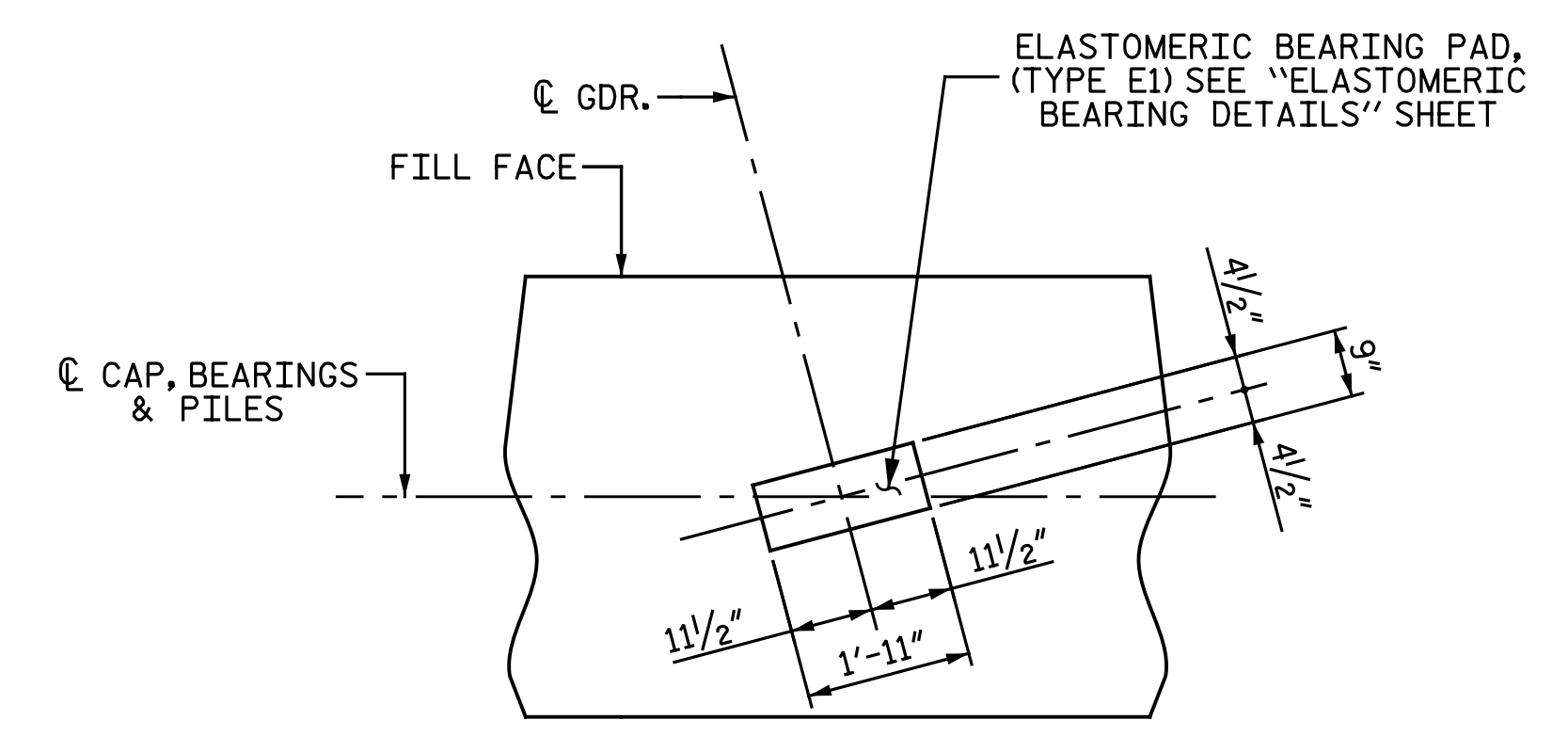
PLAN



ELEVATION

NOTES:

- FOR "SECTION A-A", SEE "INTEGRAL END BENT 2 DETAILS" SHEET.
- STIRRUPS IN CAP MAY BE SHIFTED AS NECESSARY TO CLEAR #4 V1 BARS
- THE CONTRACTOR'S ATTENTION IS CALLED TO THE FACT THAT THE UPPER PART OF THE INTEGRAL END BENT AND WINGS ARE TO BE POURED WITH THE SUPERSTRUCTURE.
- SEE SUPERSTRUCTURE SHEETS FOR UPPER PART OF INTEGRAL END BENT DETAILS.
- THE TOP SURFACE OF THE END BENT CAP AND WINGS, EXCLUDING THE OUTSIDE 4" AND THE BEARING AREA, SHALL BE RAKED TO A DEPTH OF 1/4".
- ① TYP. EACH FACE



DETAIL "A"

ALL DIMENSIONS AND DETAILS SHOWN ARE TYPICAL FOR ALL BEARINGS @ EACH BRIDGE SEAT LOCATION.

PROJECT NO. U-2524D
 GUILFORD COUNTY
 STATION: 13+62.84 -PED-
 SHEET 1 OF 2

DOCUMENT NOT CONSIDERED FINAL UNLESS ALL SIGNATURES COMPLETED	 DocuSigned by: Bradley J. Bell C41A5F8E3A3C434 5/5/2016	STATE OF NORTH CAROLINA DEPARTMENT OF TRANSPORTATION RALEIGH SUBSTRUCTURE INTEGRAL END BENT 2		
		REVISIONS		SHEET NO. S2-30
		NO. 1 BY: [] DATE: []	NO. 2 BY: [] DATE: []	NO. 3 BY: [] DATE: []

Michael Baker International
 Michael Baker Engineering
 8000 Regency Parkway, Suite 600
 Cary, North Carolina 27518
 NC License No.: F-1084

cmayhew 12:03:30 PM 5/5/2016
 File Name: Y:\Projects\NCDOT\U-2524D\Site\1.DWG\Final\402.031.U2524D_SML.E201.dgn

DRAWN BY: J. N. AUSTIN DATE: 12-23-15
 CHECKED BY: A. M. HOUSTON DATE: 2-12-16