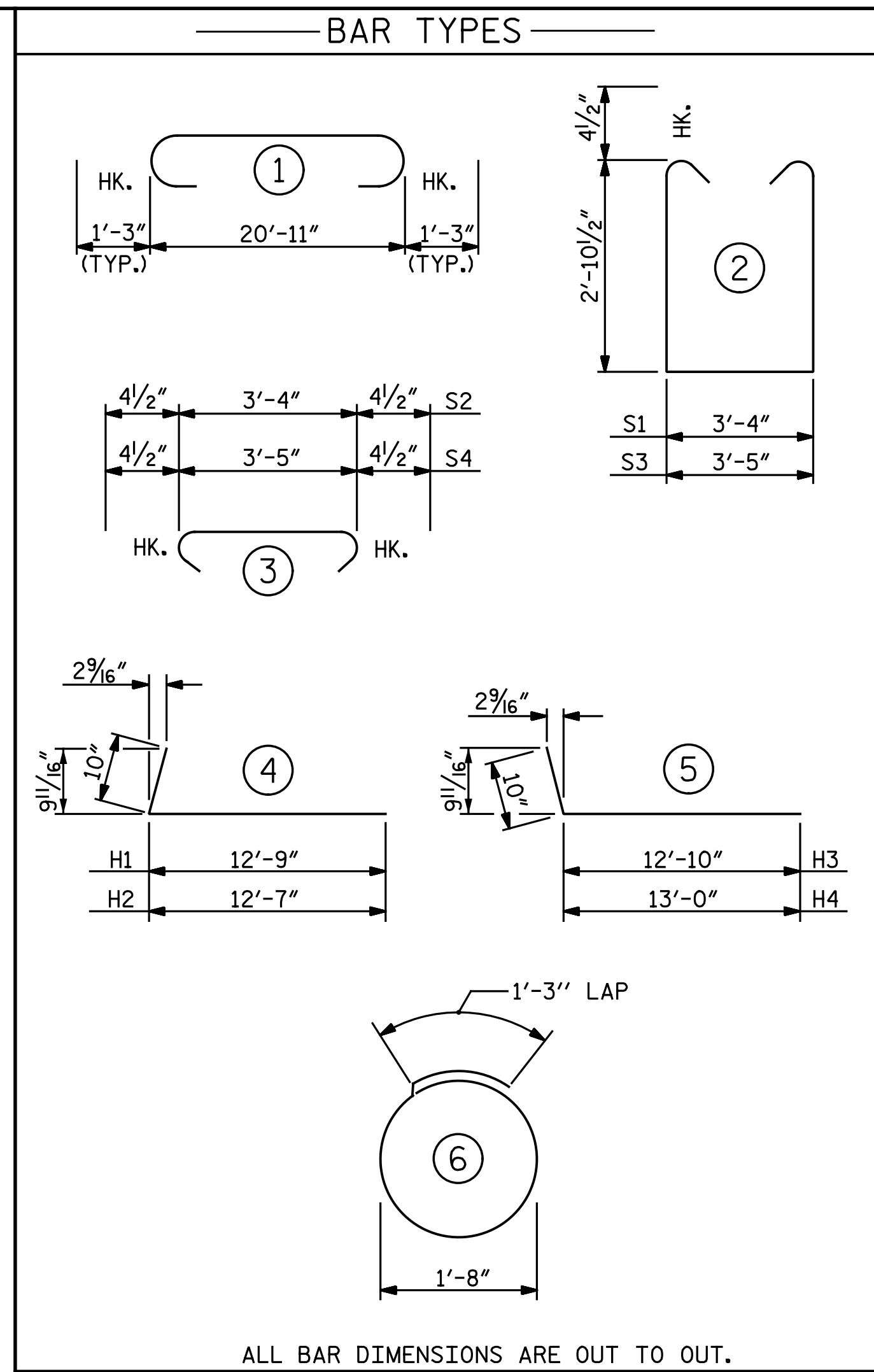
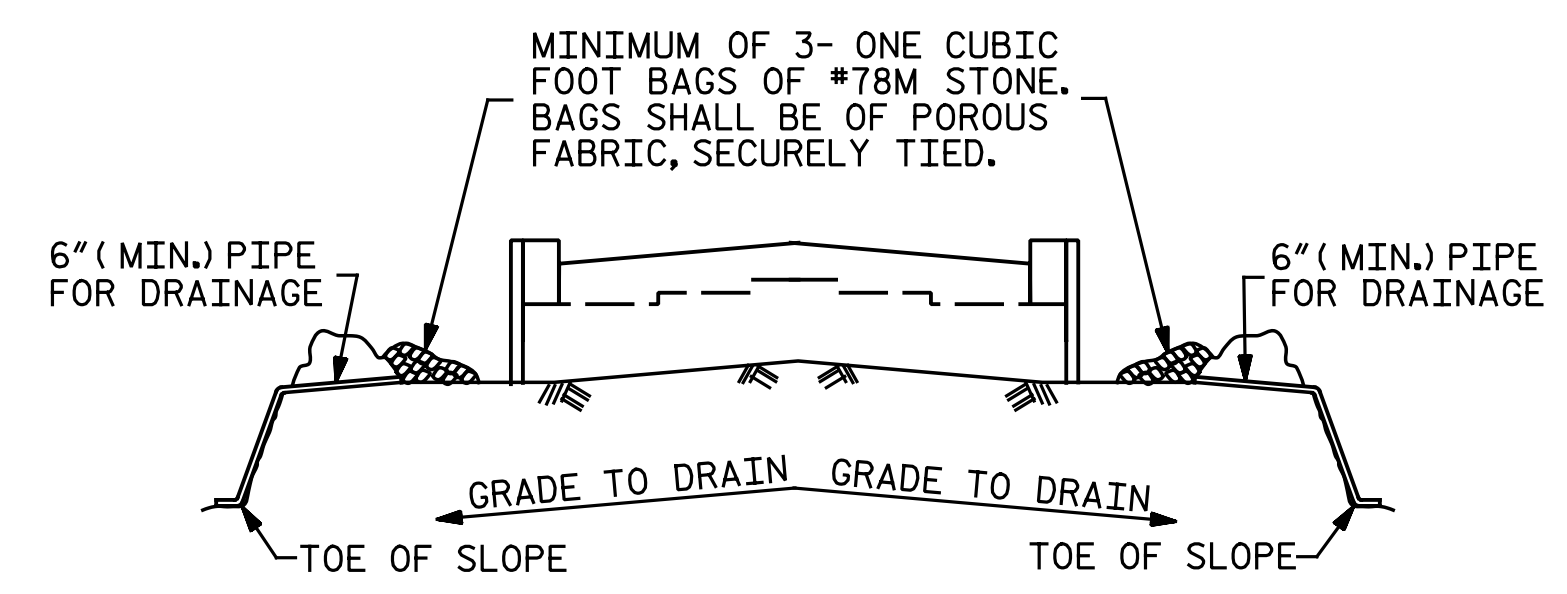


SECTION A-A



ALL BAR DIMENSIONS ARE OUT TO OUT.

BILL OF MATERIAL					
END BENT 1					
BAR	NO.	SIZE	TYPE	LENGTH	WEIGHT
B1	8	9	1	23' - 5"	637
B2	4	5	STR	20' - 11"	87
B3	4	4	STR	20' - 11"	56
B4	6	4	STR	3' - 4"	13
H1	5	5	4	13' - 7"	71
H2	5	5	4	13' - 5"	70
H3	5	5	5	13' - 8"	71
H4	5	5	5	13' - 10"	72
S1	23	4	2	9' - 10"	151
S2	23	4	3	4' - 1"	63
S3	2	4	2	9' - 11"	13
S4	2	4	3	4' - 2"	6
S5	16	4	6	6' - 6"	69
V1	82	4	STR	4' - 10"	265
REINFORCING STEEL				LBS.	1,644
CLASS A CONCRETE				C.Y.	11.9
HP 12 x 53 STEEL PILES				L.F.	200
NO. 4					

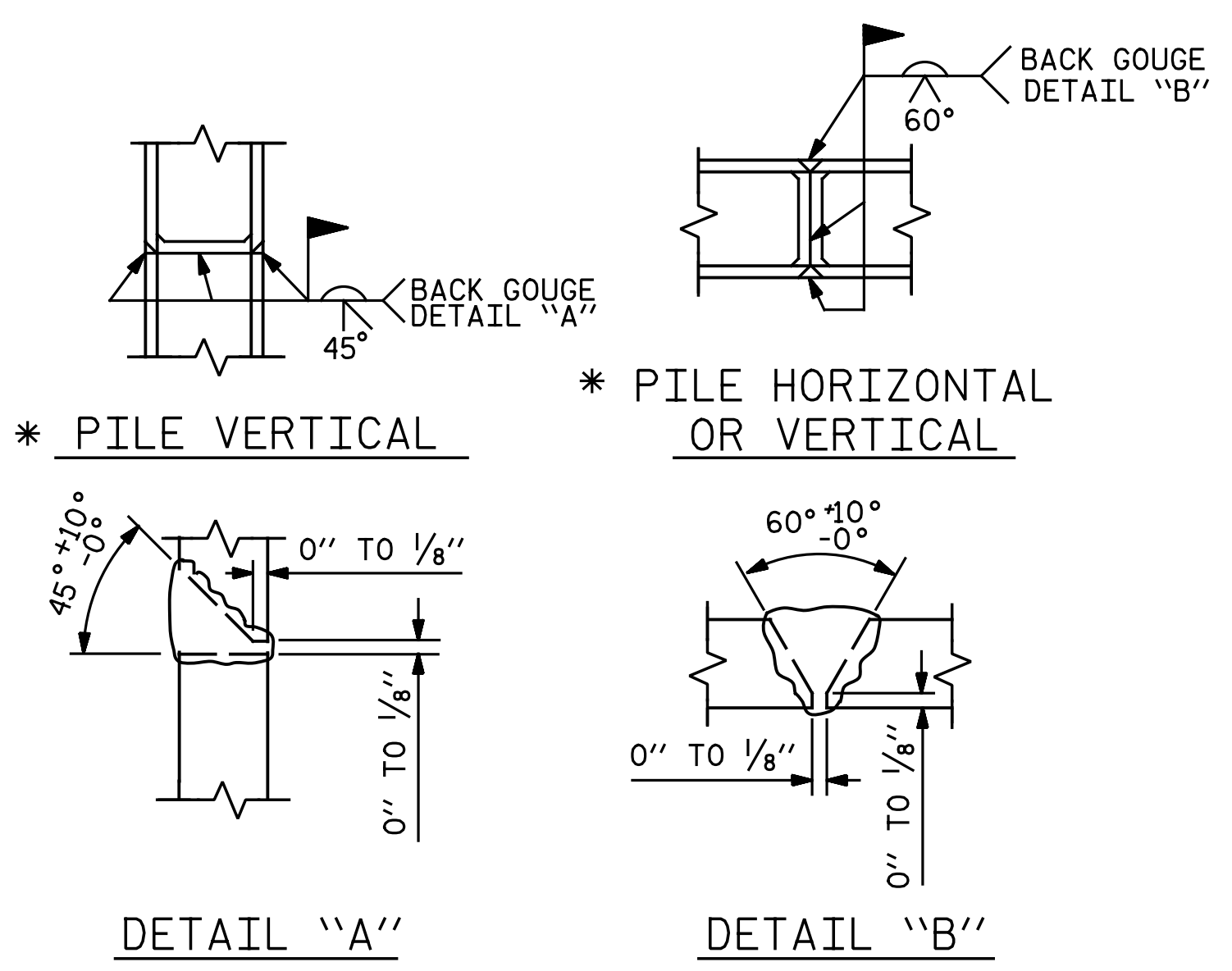


BAGGED STONE AND PIPE SHALL BE PLACED IMMEDIATELY AFTER COMPLETION OF END BENT EXCAVATION. PIPE MAY BE EITHER CONCRETE, CORRUGATED STEEL, CORRUGATED ALUMINUM ALLOY, OR CORRUGATED PLASTIC. PERFORATED PIPE WILL NOT BE ALLOWED.

BAGGED STONE SHALL REMAIN IN PLACE UNTIL THE ENGINEER DIRECTS THAT IT BE REMOVED. THE CONTRACTOR SHALL REMOVE AND DISPOSE OF SILT ACCUMULATIONS AT BAGGED STONE WHEN SO DIRECTED BY THE ENGINEER. BAGS SHALL BE REMOVED AND REPLACED WHENEVER THE ENGINEER DETERMINES THAT THEY HAVE DETERIORATED AND LOST THEIR EFFECTIVENESS.

NO SEPARATE PAYMENT WILL BE MADE FOR THIS WORK AND THE ENTIRE COST OF THIS WORK SHALL BE INCLUDED IN THE UNIT CONTRACT PRICE BID FOR THE SEVERAL PAY ITEMS.

TEMPORARY DRAINAGE AT END BENT



PILE SPLICE DETAILS

* POSITION OF PILE DURING WELDING.

PROJECT NO. U-2524D
 GUILFORD COUNTY
 STATION: 13+62.84 -PED-

DOCUMENT NOT CONSIDERED FINAL UNLESS ALL SIGNATURES COMPLETED			STATE OF NORTH CAROLINA DEPARTMENT OF TRANSPORTATION RALEIGH SUBSTRUCTURE INTEGRAL END BENT 1 DETAILS	
	Michael Baker Engineering 8000 Regency Parkway, Suite 600 Cary, North Carolina 27518 NC License No.: F-1084		REVISIONS	
	Michael Baker International		NO. 1 BY: [] DATE: []	NO. 2 BY: [] DATE: []

cmayhew 5/5/2016 12:03:28 PM
 File Name: Y:\P\Projects\NCDOT\U-2524D\Site\1.DWG\Final\402_028.U2524D_SML.E103.dgn

DRAWN BY: J. N. AUSTIN DATE: 12-1-15
 CHECKED BY: A. M. HOUSTON DATE: 2-12-16