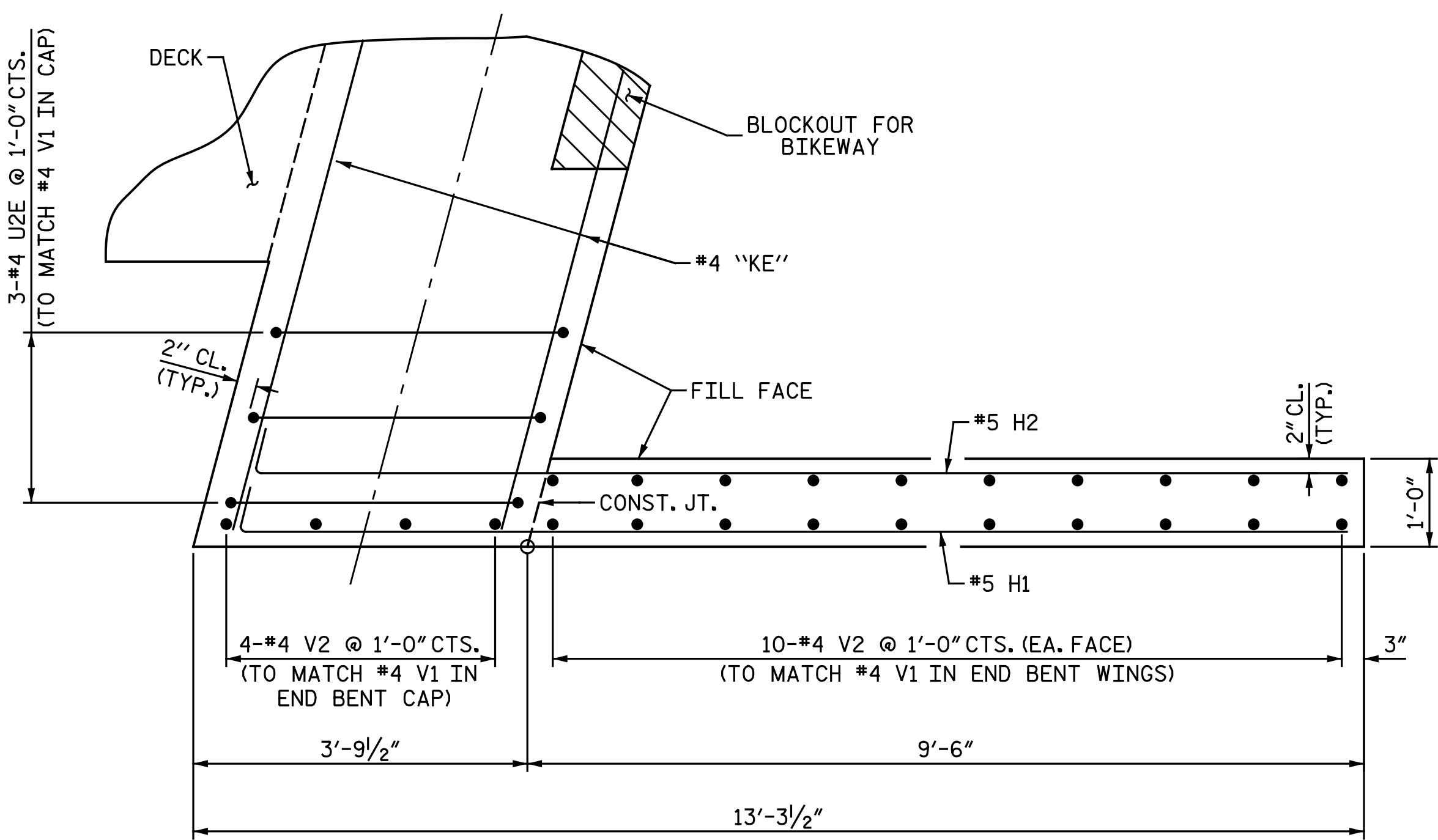
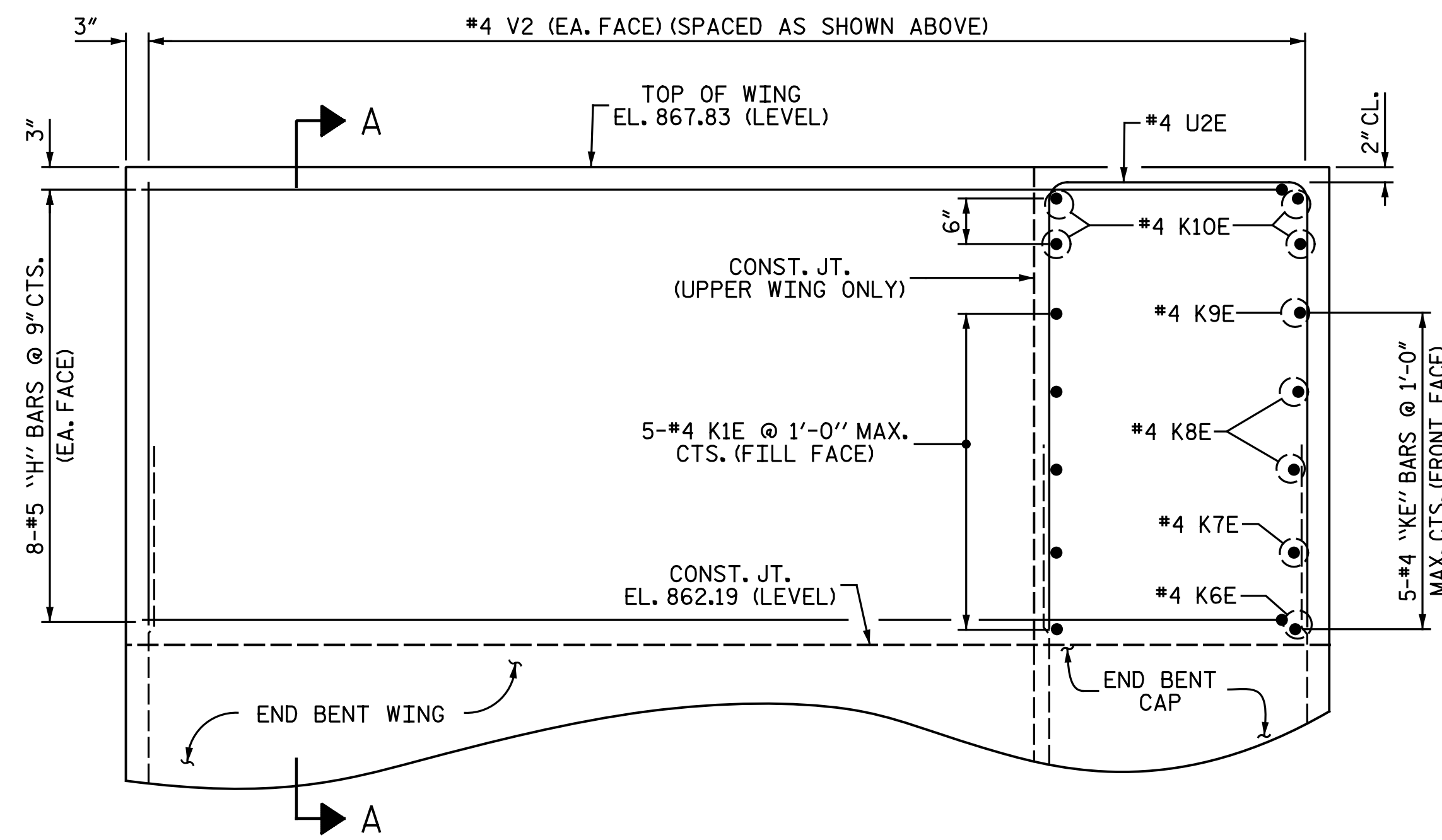


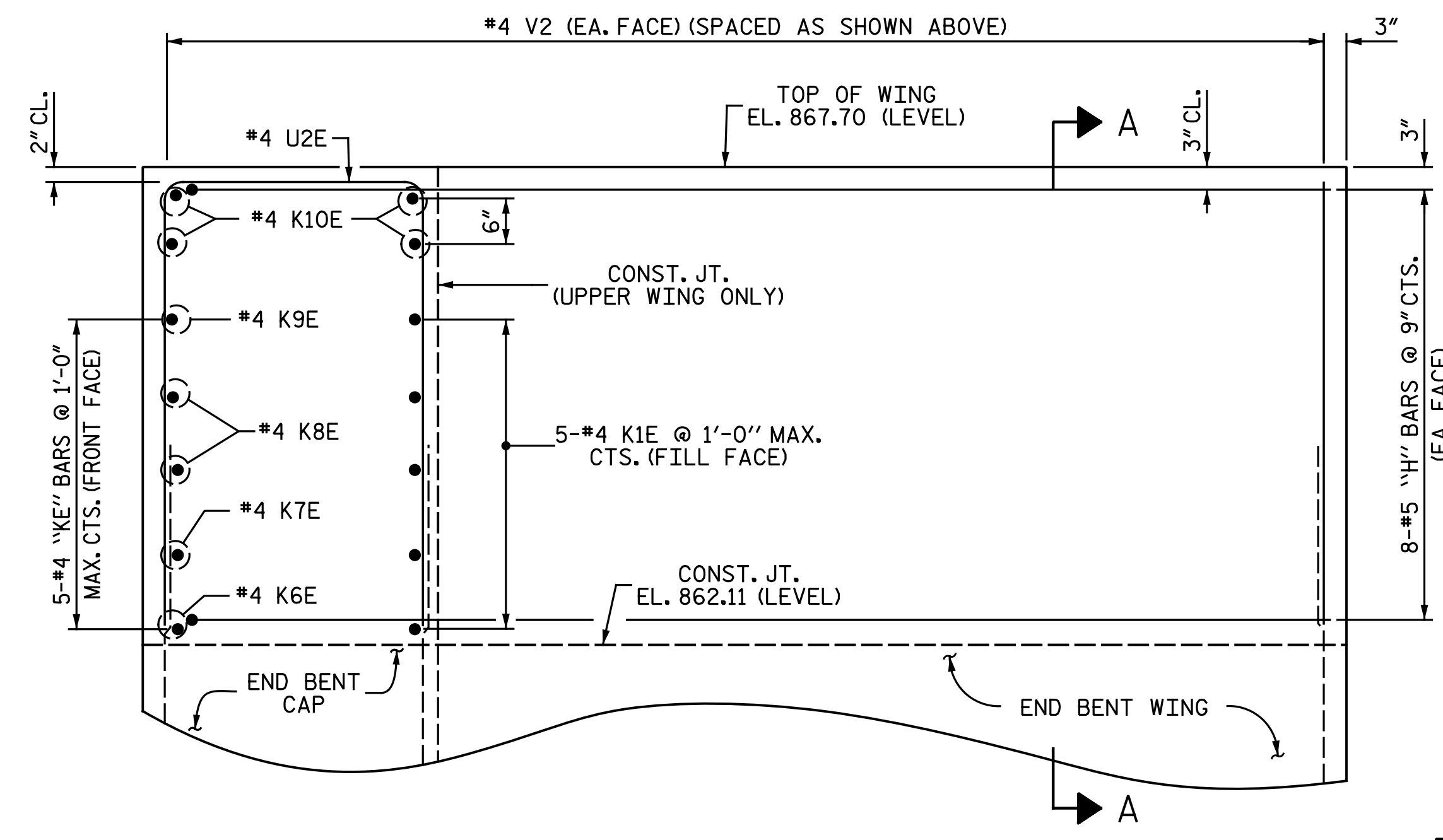
PLAN OF WING (W3)



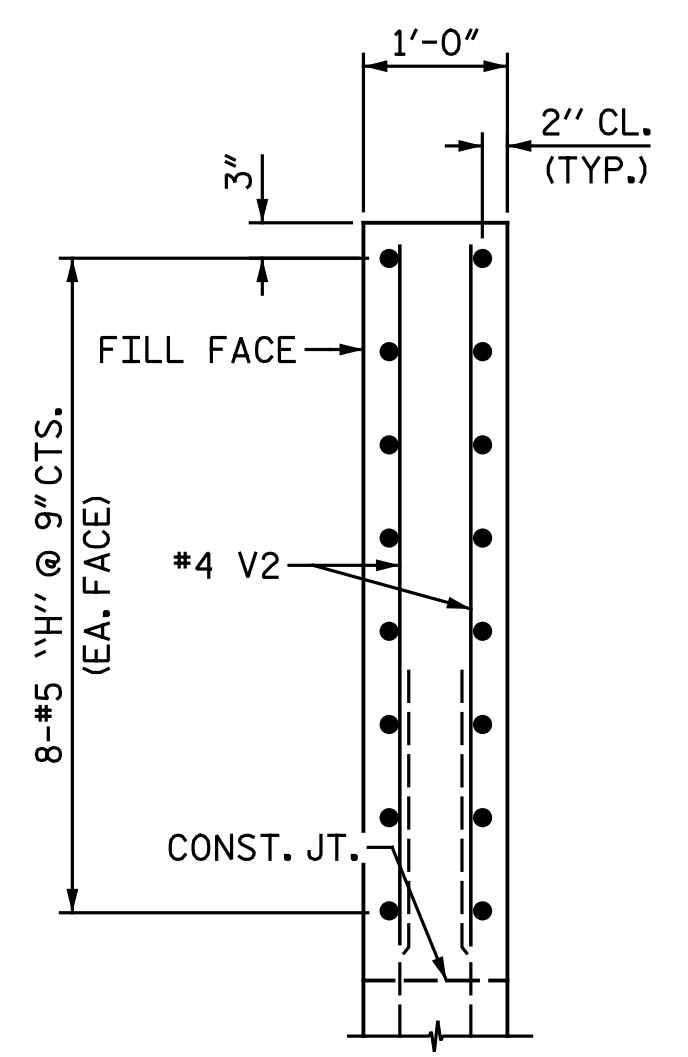
PLAN OF WING (W4)



ELEVATION OF WING (W3)
BLOCKOUT NOT SHOWN



ELEVATION OF WING (W4)
BLOCKOUT NOT SHOWN



SECTION A-A

UPPER WINGS AT INTEGRAL END BENT 2

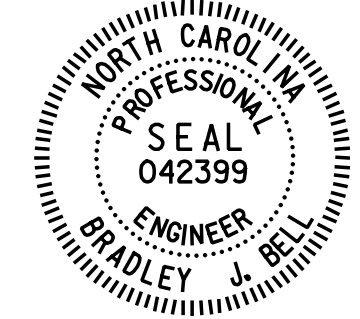
FOR LOWER WING REINFORCING STEEL AND DETAILS, SEE "INTEGRAL END BENT 2 DETAILS" SHEETS.

PROJECT NO. U-2524D
GUILFORD COUNTY
STATION: 13+62.84 -PED-
SHEET 3 OF 3

cmayhew 5/5/2016 12:03:17 PM
 Filename: Y:\Projects\NCDOT\U-2524D\Site\1.DWG\Final\402_011.U2524D_SML_S04.dgn

DRAWN BY : N. B. SPEAKS DATE : 12-18-15
CHECKED BY : A. M. HOUSTON DATE : 2-9-16

DOCUMENT NOT CONSIDERED FINAL UNLESS ALL SIGNATURES COMPLETED



DocuSigned by:
Bradley J. Bell
C41A3F8E3C3A34...
5/5/2016

Michael Baker International
Michael Baker Engineering
8000 Regency Parkway, Suite 600
Cary, North Carolina 27518
NC License No.: F-1084

STATE OF NORTH CAROLINA
DEPARTMENT OF TRANSPORTATION
RALEIGH
SUPERSTRUCTURE
PLAN OF SPAN
DETAILS

REVISIONS						SHEET NO. S2-10
NO.	BY:	DATE:	NO.	BY:	DATE:	
1			3			TOTAL SHEETS 33
2			4			