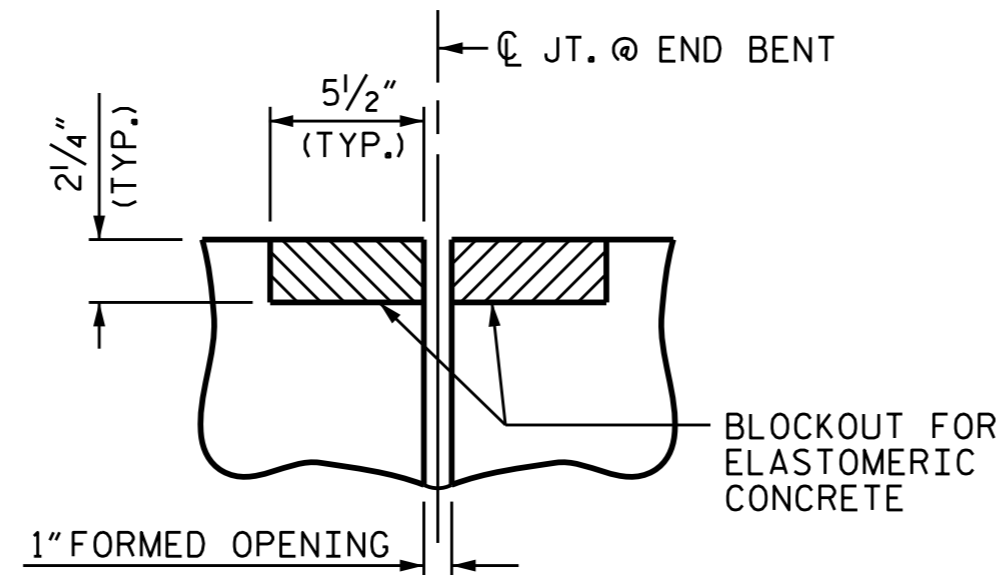
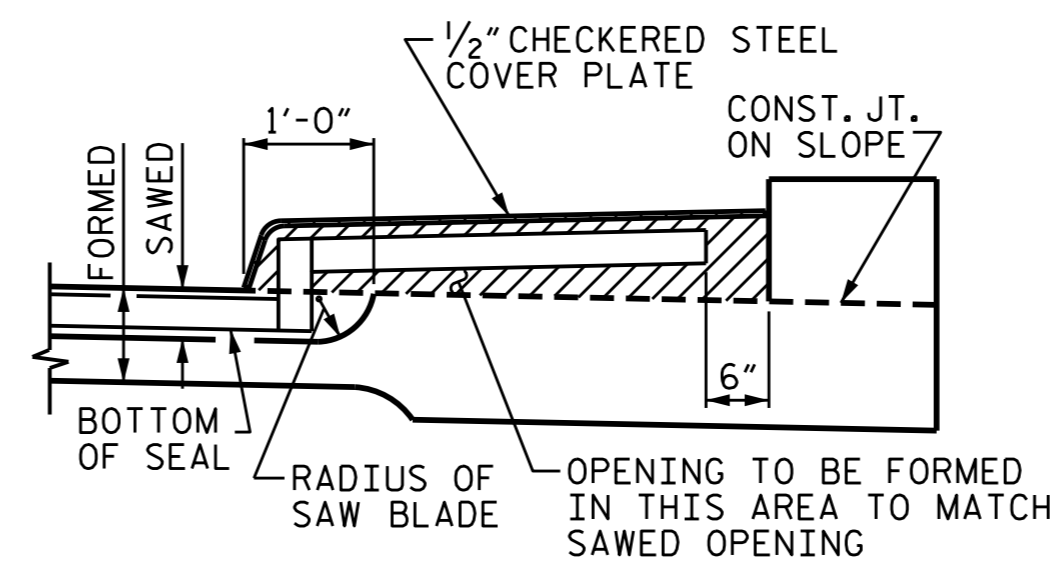


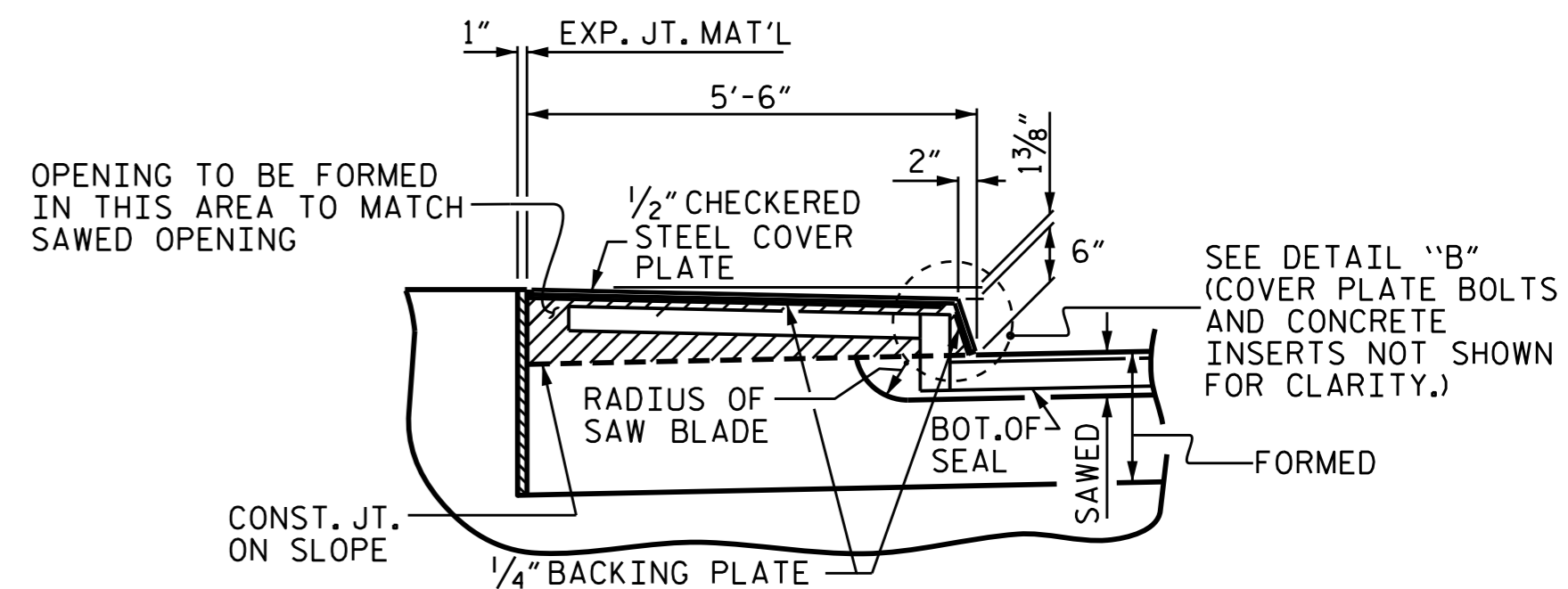
PLAN VIEW OF FOAM JOINT SEAL @ END BENT FOR SIDEWALK



SECTION C-C  
FOAM JOINT SEAL  
(PRE-SAWED ELASTOMERIC CONCRETE DIMENSIONS)



SECTION H-H



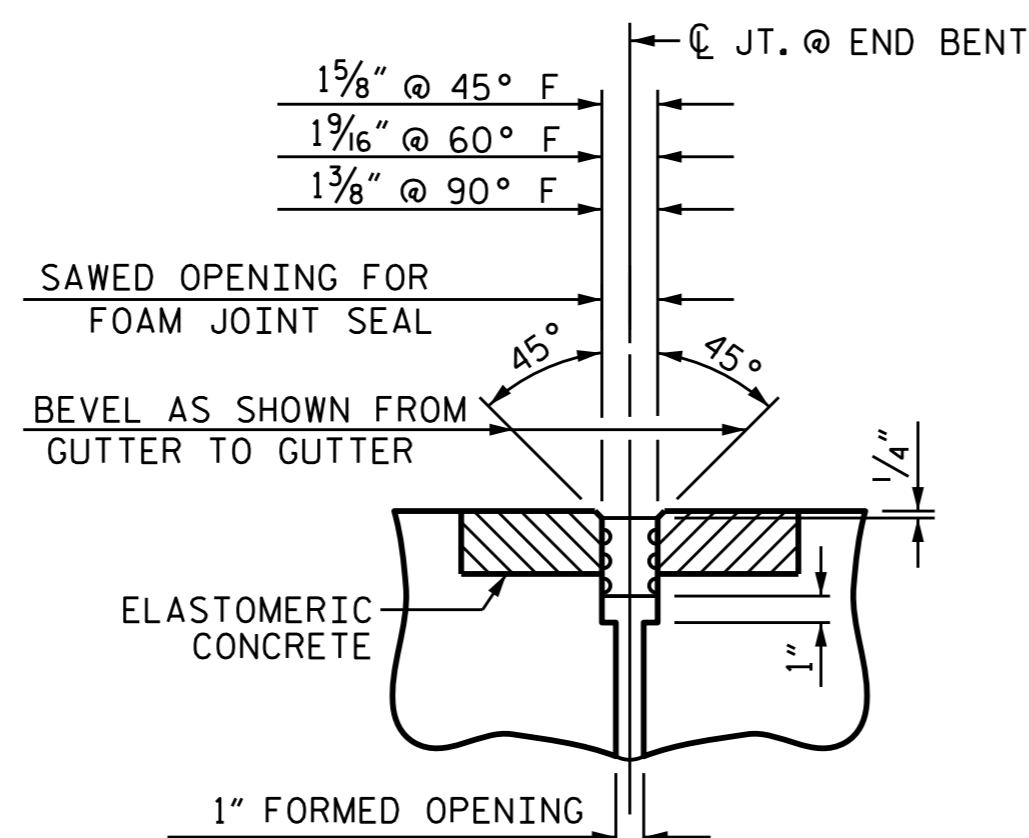
SECTION I-I

THE STEEL PLATES SHALL CONFORM TO AASHTO M270 GRADE 36 OR APPROVED EQUAL. AFTER FABRICATION, THE PLATES SHALL BE COMMERCIALY BLAST CLEANED AND EITHER COATED WITH A MINIMUM THICKNESS OF 4 MILS (DRY) OF ZINC-RICH PAINT, GALVANIZED OR METALLIZED TO A MINIMUM THICKNESS OF 6 MILS IN ACCORDANCE WITH THE STANDARD SPECIFICATIONS. FOR THERMAL SPRAYED COATINGS (METALLIZATION), SEE SPECIAL PROVISIONS.

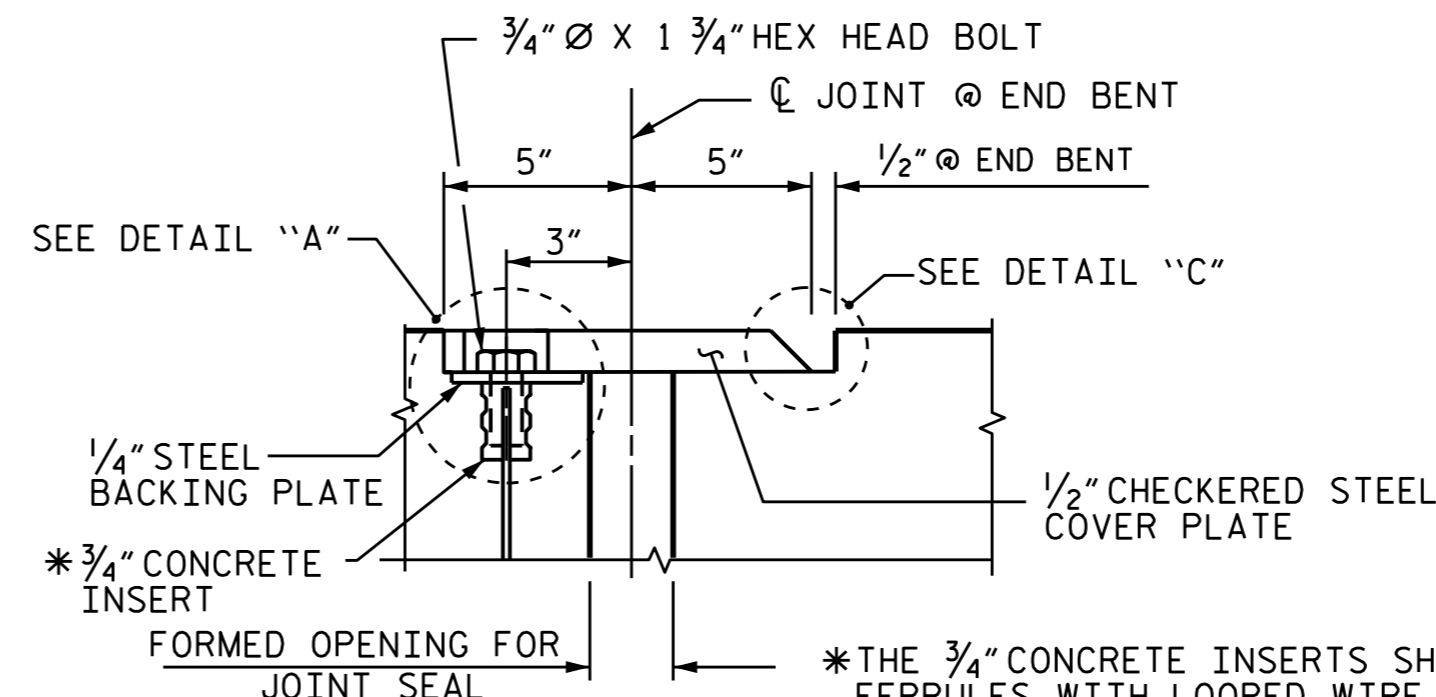
THE 3/4" DIAMETER HEX HEAD BOLTS SHALL CONFORM TO ASTM F593 ALLOY 304 STAINLESS STEEL.

NO SEPARATE PAYMENT WILL BE MADE FOR FURNISHING AND INSTALLING THE COVER PLATE. THE ENTIRE COST OF THIS WORK SHALL BE INCLUDED IN THE LUMP SUM PRICE FOR "FOAM JOINT SEALS".

SEE DETAIL "B" (COVER PLATE BOLTS AND CONCRETE INSERTS NOT SHOWN FOR CLARITY.)



SECTION C-C  
FOAM JOINT SEAL  
(EXPANSION)

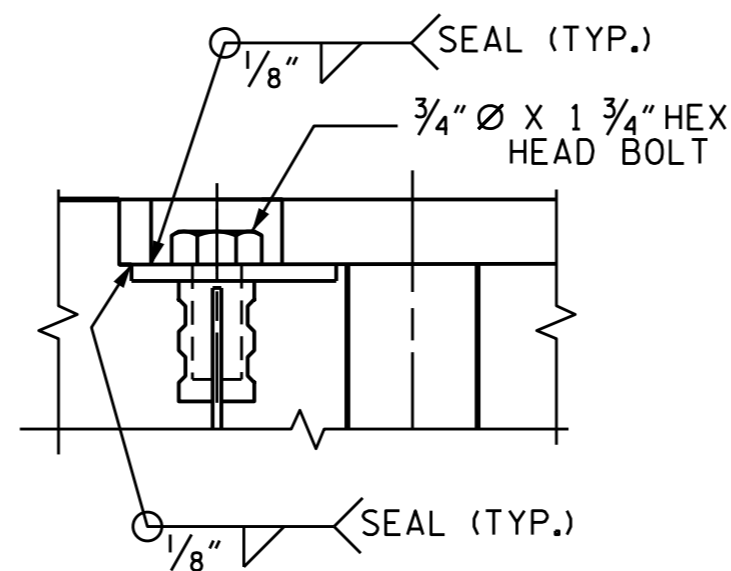


SECTION K-K

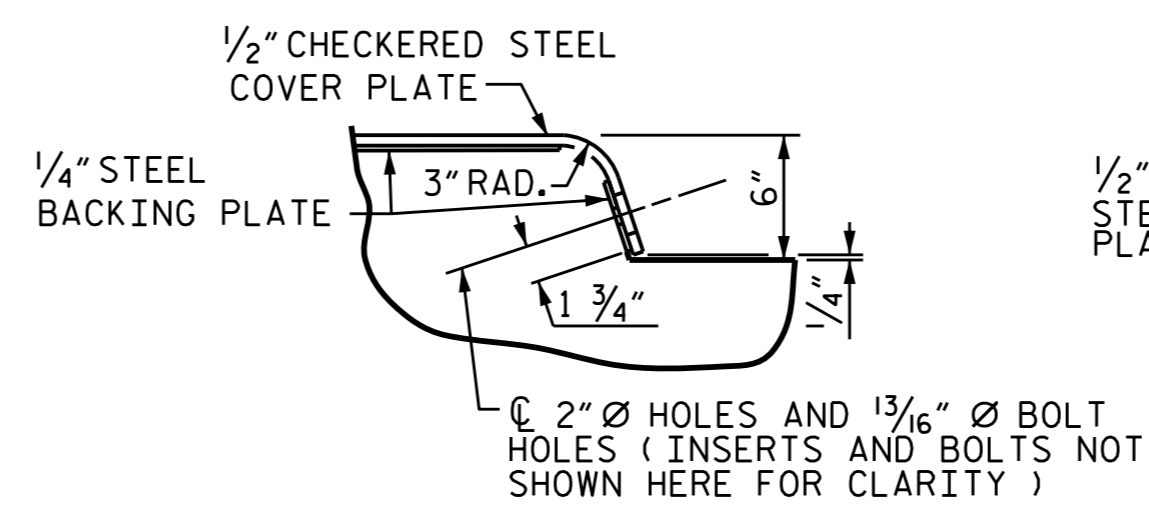
\*THE 3/4" CONCRETE INSERTS SHALL BE CLOSED-END FERRULES WITH LOOPED WIRE STRUTS ATTACHED TO THEM. THE INSERTS SHALL CONFORM TO AASHTO M169, GRADE 12L14 AND SHALL HAVE A TENSILE WORKING LOAD CAPACITY OF 3000 LBS.

ELASTOMERIC CONCRETE	
END BENT	ELASTOMERIC CONCRETE * (CU. FT.)
1	11.3
2	11.3
TOTAL	22.6

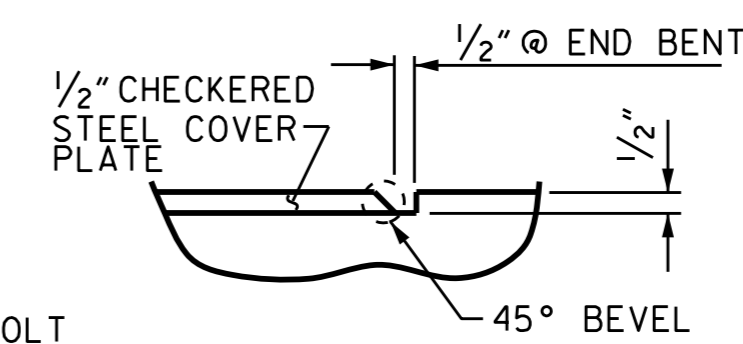
\* BASED ON THE MINIMUM BLOCKOUT SHOWN.



DETAIL "A"



DETAIL "B"



DETAIL "C"

JOINT SEAL DETAILS @ END BENT

PROJECT NO. U-2524D  
GUILFORD COUNTY  
 STATION: 25+18.62 -Y6-

SHEET 3 OF 3

STATE OF NORTH CAROLINA  
 DEPARTMENT OF TRANSPORTATION  
 RALEIGH

STANDARD

BRIDGE APPROACH  
 SLAB DETAILS



DocuSigned by:  
 Ting Fang  
 7/1/2016

DOCUMENT NOT CONSIDERED  
 FINAL UNLESS ALL  
 SIGNATURES COMPLETED

REVISIONS						SHEET NO. S1-33
NO.	BY:	DATE:	NO.	BY:	DATE:	
1			3			TOTAL SHEETS 33
2			4			

ASSEMBLED BY :	C. YOKELEY	DATE :	8/20/14
CHECKED BY :	T. H. FANG	DATE :	5/2/16
DRAWN BY :	FCJ 11/88	REV. 5/7/03	RWW/JTE
CHECKED BY :	ARB 11/88	REV. 5/1/06RRR	MAA/KMM
		REV. 10/1/11	MAA/GM