

SEE PLAN OF APPROACH
SLABS, SHEET 2 OF 3.

BILL OF MATERIAL

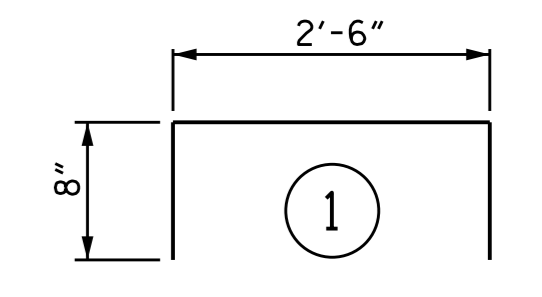
FOR ONE APPROACH SLAB
(2 REQ'D)

BAR	NO.	SIZE	TYPE	LENGTH	WEIGHT
* A1	100	#4	STR	19'-10"	1325
A2	104	#4	STR	19'-8"	1366
* B1	111	#5	STR	23'-8"	2740
B2	111	#6	STR	24'-6"	4085
* B3	5	#4	STR	24'-6"	82
* G1	25	#4	STR	6'-7"	110
* U1	8	#4	1	4'-0"	21

REINFORCING STEEL	LBS.	5451
* EPOXY COATED REINFORCING STEEL	LBS.	4278

CLASS AA CONCRETE		
POUR #1 - SLAB	C. Y.	60.3
POUR #2 - SIDEWALKS	C. Y.	3.1
TOTAL	C. Y.	63.4

BAR TYPES



ALL BAR DIMENSIONS ARE OUT TO OUT

SPLICE LENGTHS

BAR SIZE	EPOXY COATED	UNCOATED
#4	2'-0"	1'-9"
#5	2'-6"	2'-2"
#6	3'-10"	2'-7"

* THESE BARS ARE TO BE PLACED AFTER THE SAWING OF THE JOINT. THE HOLES SHALL BE DRILLED AND THE DOWELS GROUTED INTO PLACE.

NOTES

APPROACH SLAB SHALL NOT BE CONSTRUCTED PRIOR TO COMPLETION OF THE BRIDGE DECK.

FOR REINFORCED BRIDGE APPROACH FILL INCLUDING GEOTEXTILE, IMPERMEABLE GEOMEMBRANE, 4" Ø DRAINAGE PIPE, #78M STONE, AND SELECT MATERIAL, SEE ROADWAY PLANS.

AREA BETWEEN THE WINGWALL AND APPROACH SLAB SHALL BE GRADED TO DRAIN THE WATER AWAY FROM THE FILL FACE OF THE BRIDGE AND SHALL BE PAVED. SEE ROADWAY PLANS.

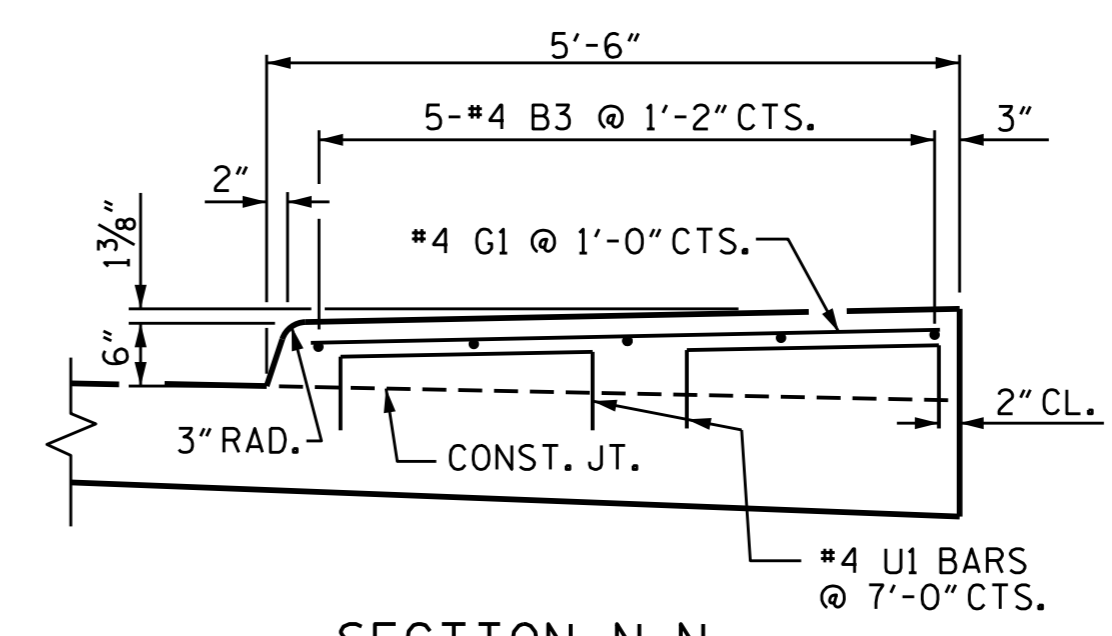
THE JOINT SHALL BE SAWED PRIOR TO THE CASTING OF THE SIDEWALK.

WITH FOAM JOINT SEAL

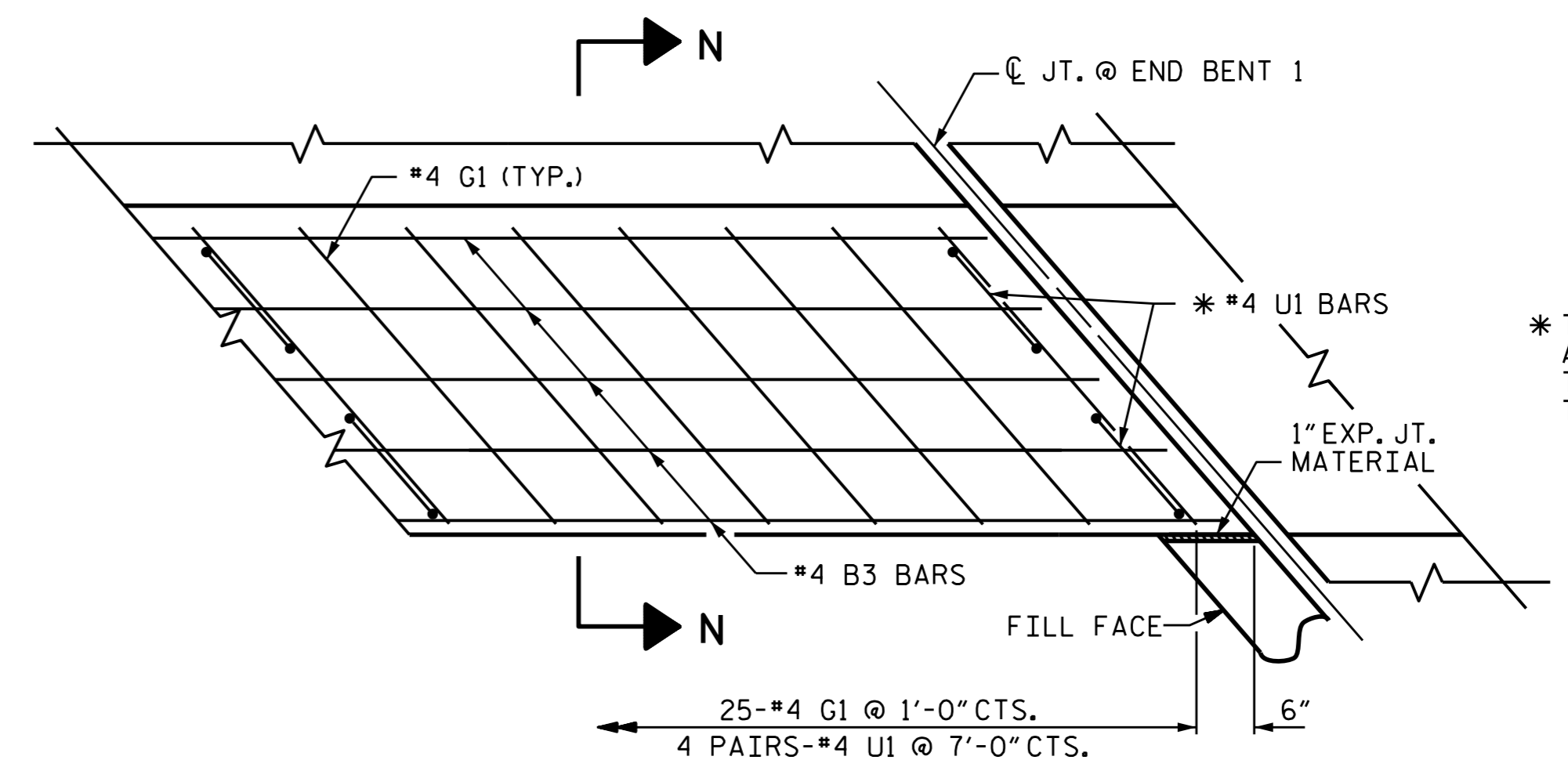
FOR FOAM JOINT SEALS, SEE SPECIAL PROVISIONS.

THE NOMINAL UNCOMPRESSED SEAL WIDTH OF THE FOAM JOINT SEAL SHALL BE 3 7/16" AT END BENT 2.

FOR ELASTOMERIC CONCRETE, SEE SPECIAL PROVISIONS.



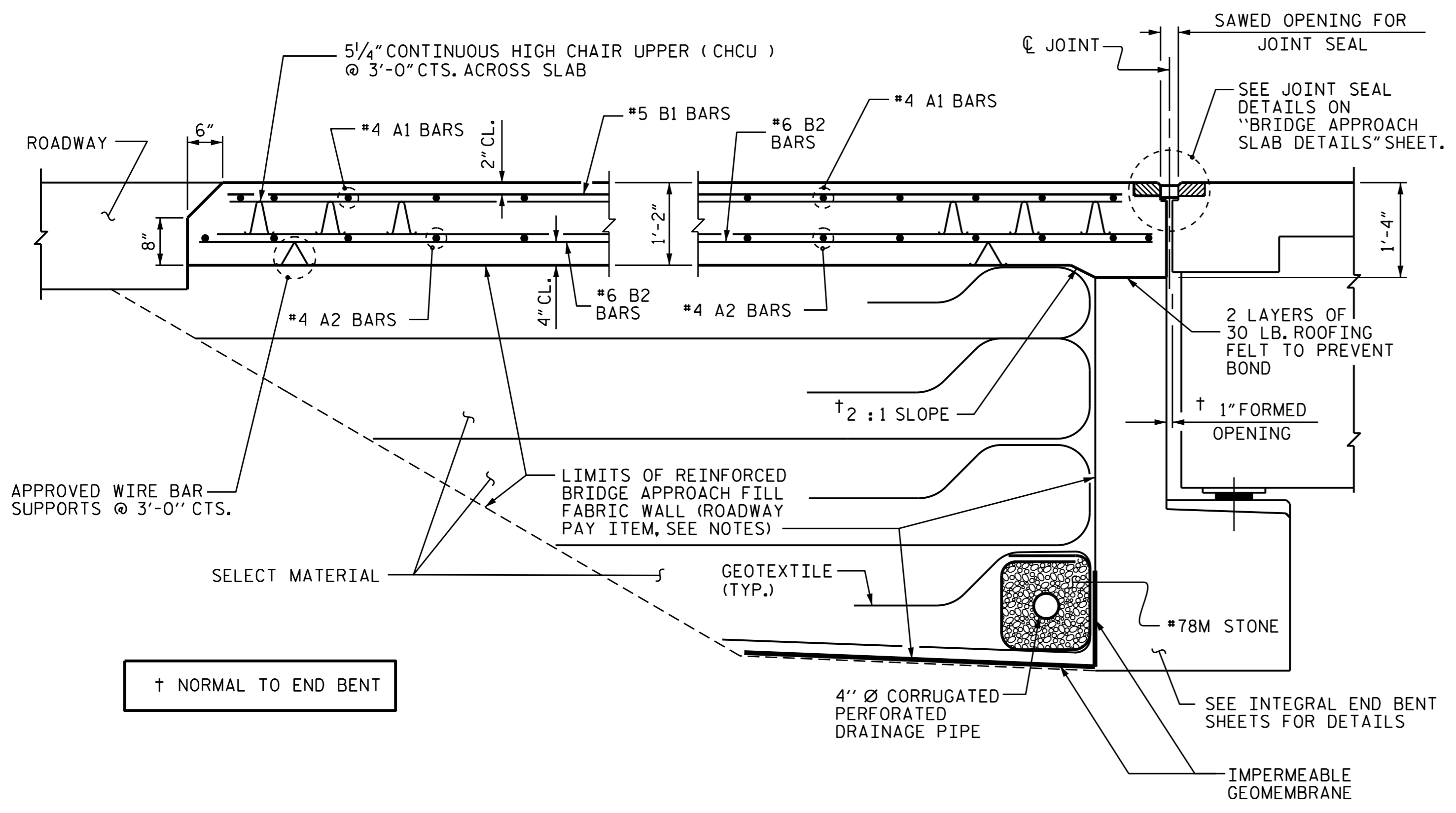
SECTION N-N



PLAN

SIDEWALK DETAILS

END BENT 1 SHOWN, END BENT 2 SIMILAR BY ROTATION.

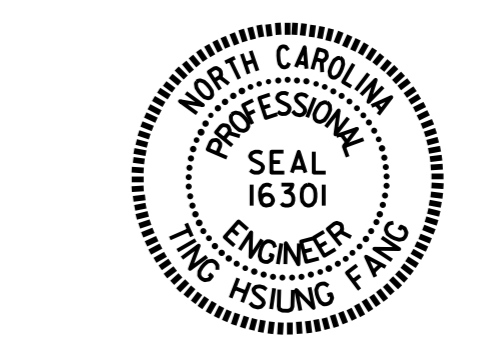


SECTION THRU SLAB

REINFORCED BRIDGE APPROACH FILL IS REQUIRED AT END BENT 1 AND 2 FOR SOIL NAIL WALL. FOR BRIDGE APPROACH FILL FOR MSE WALL (ALTERNATIVE), SEE MSE WALL SPECIAL PROVISIONS.

† NORMAL TO END BENT

ASSEMBLED BY :	C. YOKELEY	DATE :	5/21/14
CHECKED BY :	T. H. FANG	DATE :	5/3/16
DESIGN ENGINEER OF RECORD:	P. K. NEWTON	DATE :	5/12/16
DRAWN BY :	EEM 3/95	REV. 5/1/06RR	KMM/GM
CHECKED BY :	VAP 3/95	REV. 10/1/11	MAA/GM
		REV. 12/21/11	MAA/GM



DocuSigned by:
Ting Fang
7/1/2016

DOCUMENT NOT CONSIDERED FINAL UNLESS ALL SIGNATURES COMPLETED

PROJECT NO. U-2524D
GUILFORD COUNTY
STATION: 25+18.62 -Y6-

SHEET 1 OF 3

STATE OF NORTH CAROLINA DEPARTMENT OF TRANSPORTATION RALEIGH STANDARD					
BRIDGE APPROACH SLAB FOR FLEXIBLE PAVEMENT					
REVISIONS					SHEET NO.
NO.	BY:	DATE:	NO.	BY:	DATE:
1			3		
2			4		
					TOTAL SHEETS 33