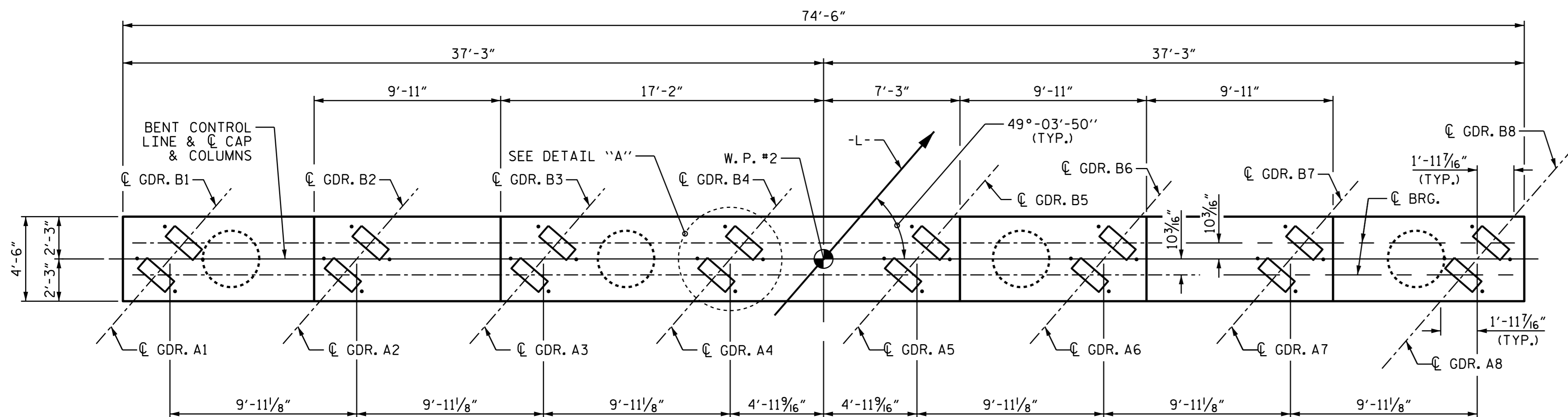


**NOTES**

STIRRUPS IN CAP MAY BE SHIFTED AS NECESSARY TO CLEAR ANCHOR BOLTS.

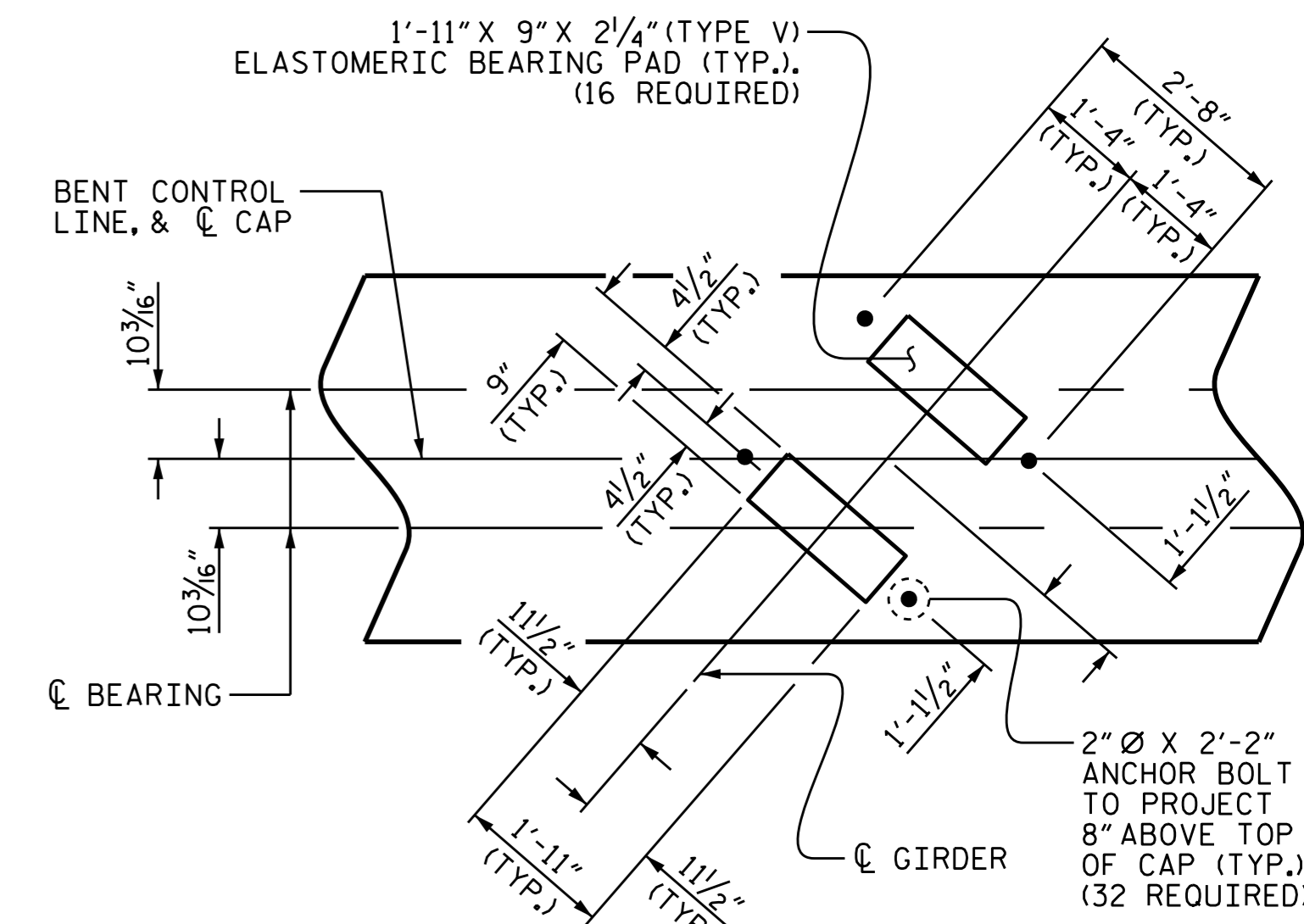
HOOKS IN "V" BARS MAY BE TURNED AS NECESSARY FOR PLACING REINFORCING STEEL.



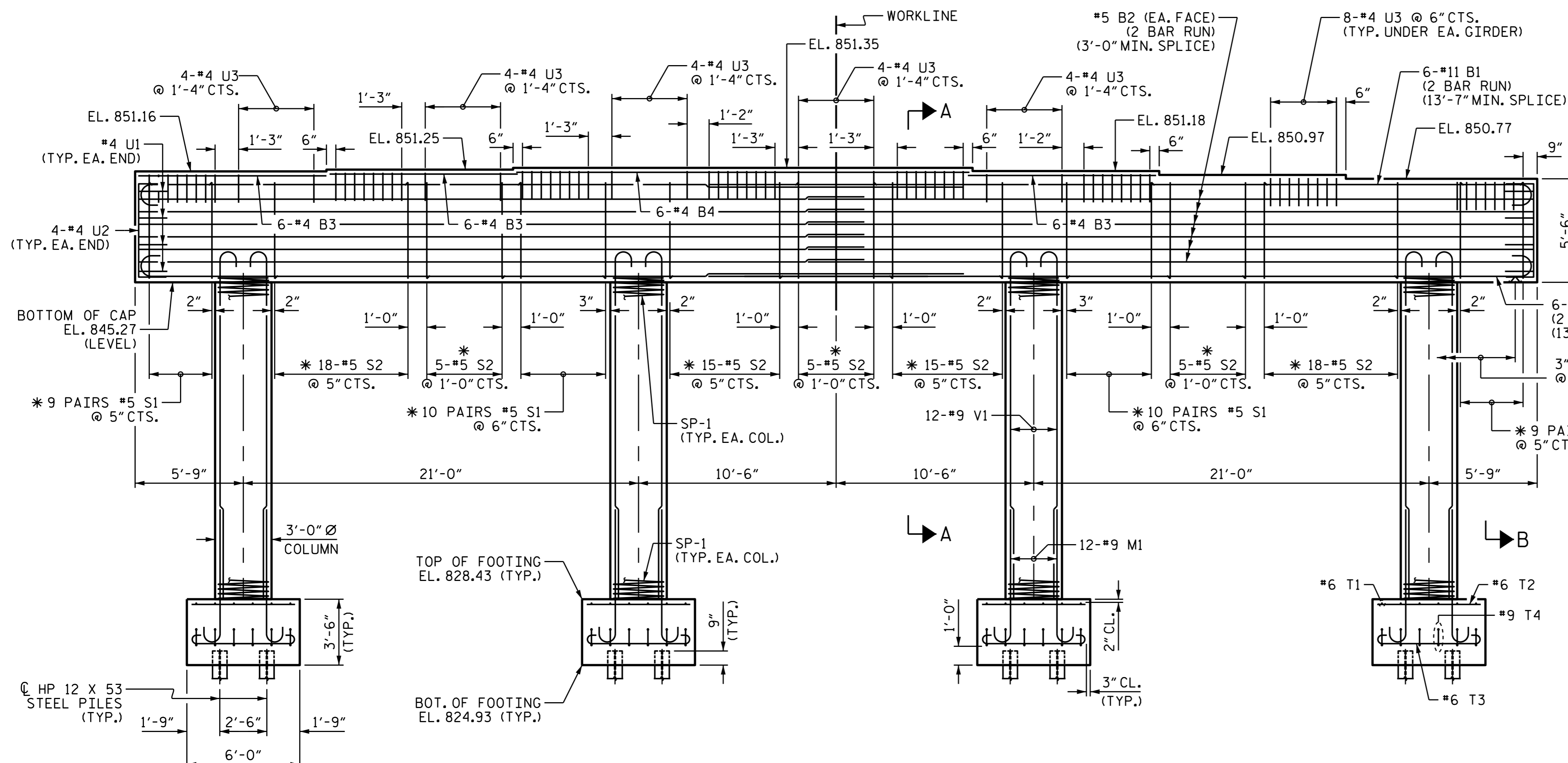
**PLAN**

SPAN B

SPAN A

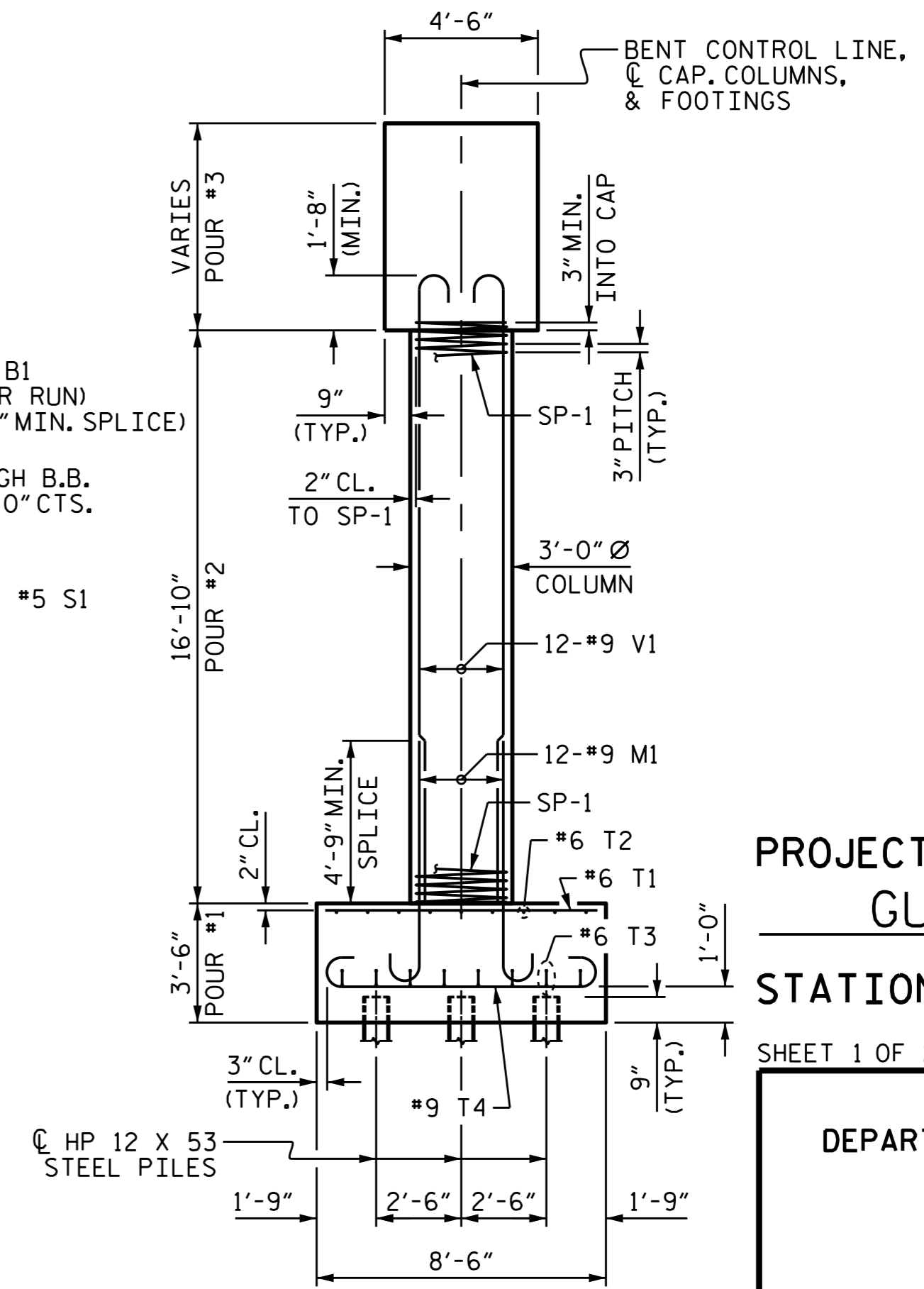


**DETAIL "A"**



**ELEVATION**

REINFORCING STEEL, DIMENSIONS AND DETAILS ARE TYPICAL FOR EACH COLUMN AND FOOTING UNLESS OTHERWISE NOTED.



**END ELEVATION**



Disseminated by: *Ting Fang* 7/1/2016

PROJECT NO. U-2524D  
 GUILFORD COUNTY  
 STATION: 25+18.62 -Y6-

SHEET 1 OF 2

STATE OF NORTH CAROLINA  
 DEPARTMENT OF TRANSPORTATION  
 RALEIGH  
 SUBSTRUCTURE  
 BENT 1

DRAWN BY: P. K. NEWTON DATE: 4/12/16  
 CHECKED BY: T. H. FANG DATE: 5/3/16  
 DESIGN ENGINEER OF RECORD: P. K. NEWTON DATE: 5/12/16

DOCUMENT NOT CONSIDERED  
 FINAL UNLESS ALL  
 SIGNATURES COMPLETED

REVISIONS						SHEET NO.
NO.	BY:	DATE:	NO.	BY:	DATE:	S1-25
1			3			TOTAL SHEETS
2			4			33