

NOTES:

GROOVED CONTRACTION JOINTS 1/2" IN DEPTH, SHALL BE TOOLED IN ALL EXPOSED FACES OF SIDEWALK IN ACCORDANCE WITH ARTICLE 825-10(B) OF THE STANDARD SPECIFICATIONS. THE CONTRACTION JOINTS SHALL BE LOCATED AT A SPACING OF 8 FT. TO 10 FT. BETWEEN EXPANSION JOINTS, NO CONTRACTION JOINTS WILL BE REQUIRED FOR SEGMENTS LESS THAN 10 FT. IN LENGTH.

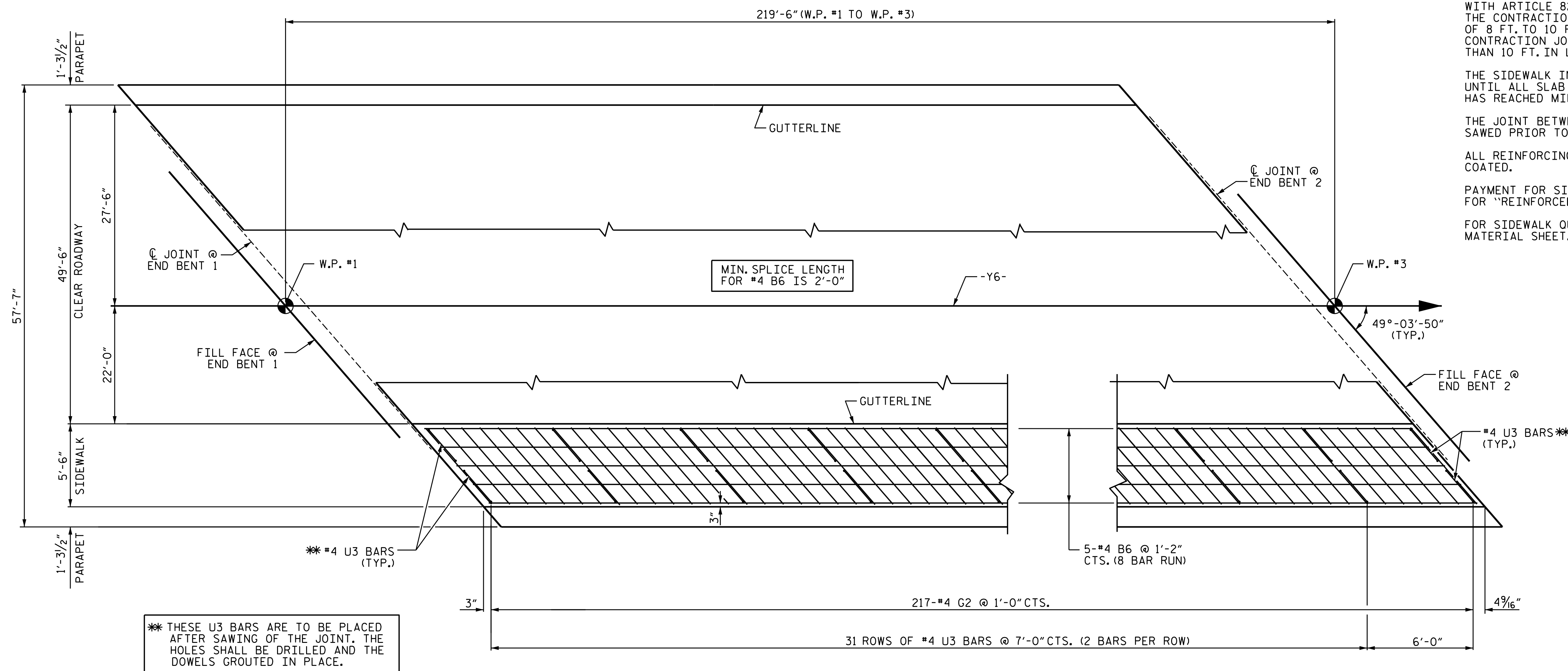
THE SIDEWALK IN THE CONTINUOUS UNIT SHALL NOT BE CAST UNTIL ALL SLAB CONCRETE IN THE UNIT HAS BEEN CAST AND HAS REACHED MINIMUM COMPRESSIVE STRENGTH OF 3000 PSI.

THE JOINT BETWEEN THE DECK AND APPROACH SLAB SHALL BE SAWED PRIOR TO THE CASTING OF THE SIDEWALK.

ALL REINFORCING STEEL IN SIDEWALK SHALL BE EPOXY COATED.

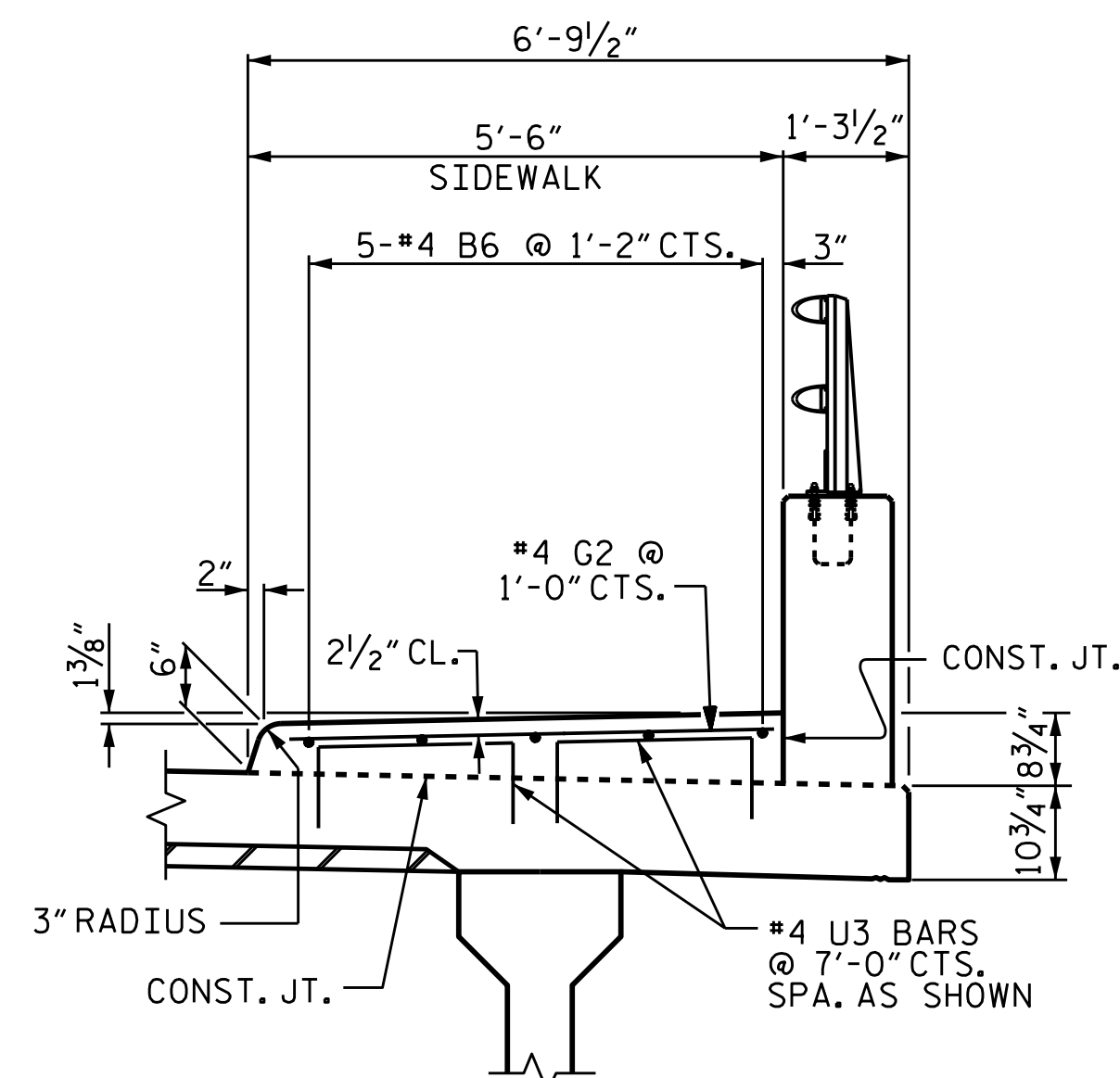
PAYMENT FOR SIDEWALK SHALL BE INCLUDED IN PAY ITEM FOR "REINFORCED CONCRETE DECK SLAB".

FOR SIDEWALK QUANTITIES, SEE SUPERSTRUCTURE BILL OF MATERIAL SHEET.



** THESE U3 BARS ARE TO BE PLACED AFTER SAWING OF THE JOINT. THE HOLES SHALL BE DRILLED AND THE DOWELS GROUTED IN PLACE.

PLAN OF SIDEWALK



SECTION THRU SIDEWALK

THE #4 U3 BARS MAY BE PUSHED INTO GREEN CONCRETE, EXCEPT AS NOTED ** ABOVE, AFTER DECK SLAB HAS BEEN SCREEDED OFF.

PROJECT NO. U-2524D
GUILFORD COUNTY
 STATION: 25+18.62 -Y6-

STATE OF NORTH CAROLINA
 DEPARTMENT OF TRANSPORTATION
 RALEIGH
 SUPERSTRUCTURE
 SIDEWALK DETAILS



DocuSigned by:
 Ting Fang 7/8/2016
 E720840097435
 DOCUMENT NOT CONSIDERED
 FINAL UNLESS ALL
 SIGNATURES COMPLETED

REVISIONS						SHEET NO. S1-9
NO.	BY:	DATE:	NO.	BY:	DATE:	
1			3			TOTAL SHEETS 33
2			4			

DRAWN BY : P.N.HOLDER DATE : 1/13/16
 CHECKED BY : T. H. FANG DATE : 5/3/16
 DESIGN ENGINEER OF RECORD : P. K. NEWTON DATE : 5/12/16