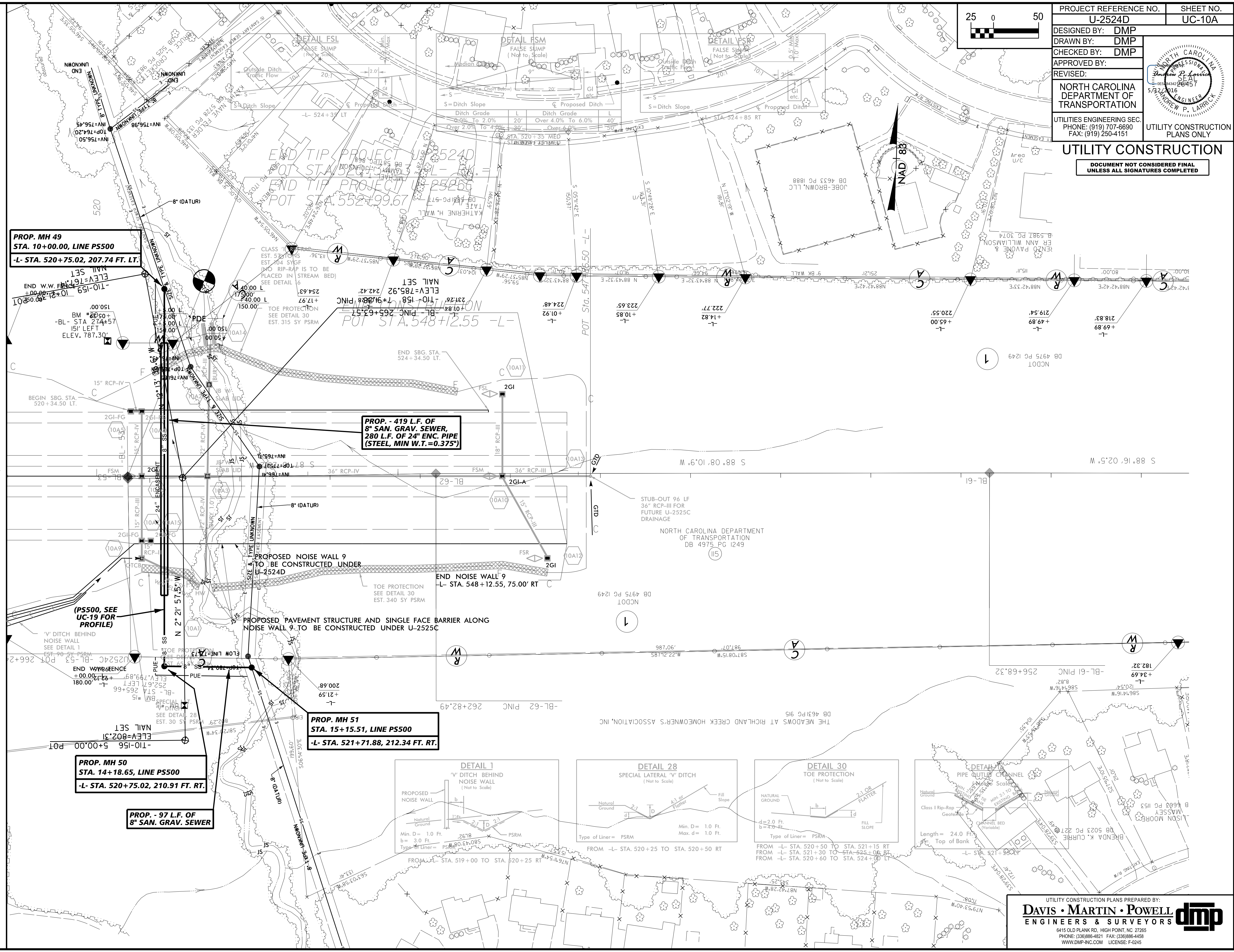
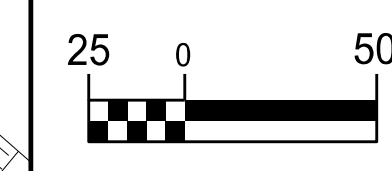


UTILITY CONSTRUCTION

DOCUMENT NOT CONSIDERED FINAL UNLESS ALL SIGNATURES COMPLETED



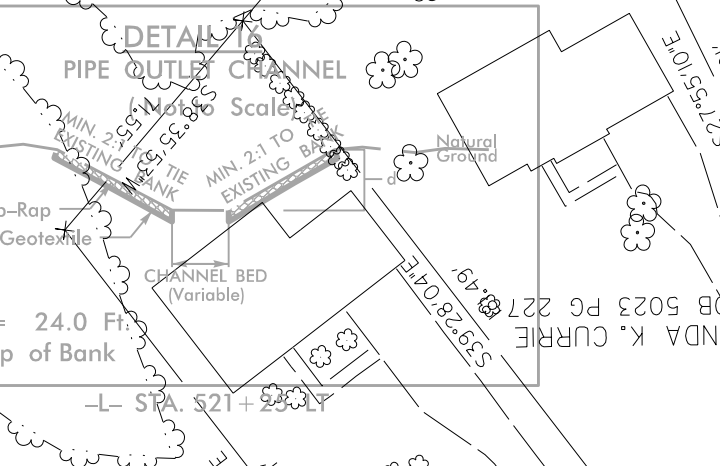
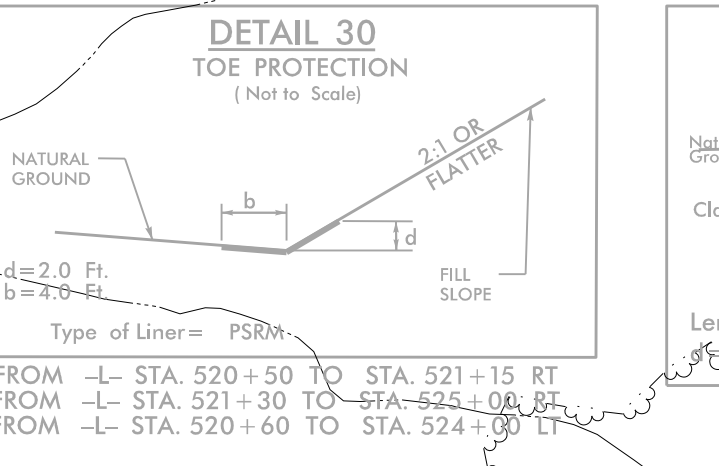
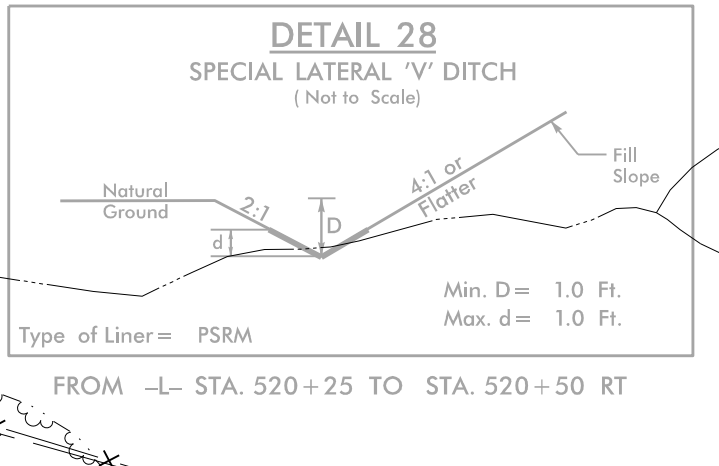
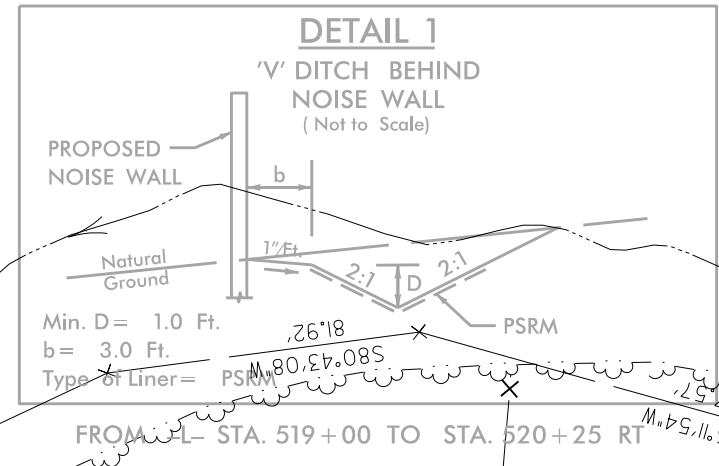
PROP. MH 49
 STA. 10+00.00, LINE PS500
 -L- STA. 520+75.02, 207.74 FT. LT.

PROP. - 419 L.F. OF 8" SAN. GRAV. SEWER, 280 L.F. OF 24" ENC. PIPE (STEEL, MIN W.T.=0.375")

PROP. MH 51
 STA. 15+15.51, LINE PS500
 -L- STA. 521+71.88, 212.34 FT. RT.

PROP. MH 50
 STA. 14+18.65, LINE PS500
 -L- STA. 520+75.02, 210.91 FT. RT.

PROP. - 97 L.F. OF 8" SAN. GRAV. SEWER



REVISIONS

MATCH LINE -L- STA 519+00 SEE SHEET UC-10