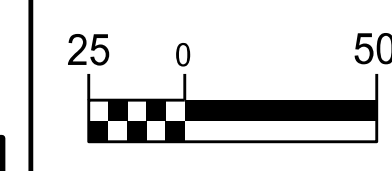
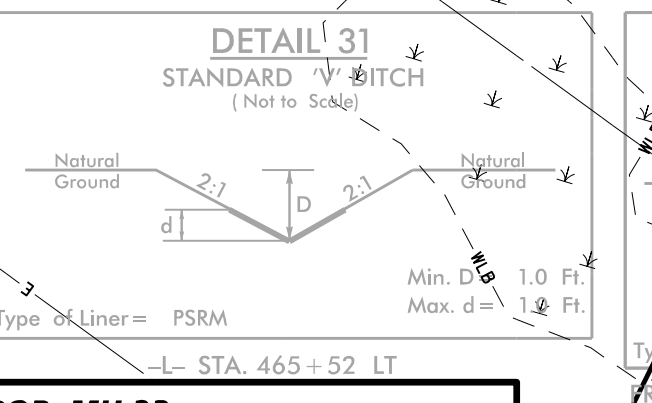
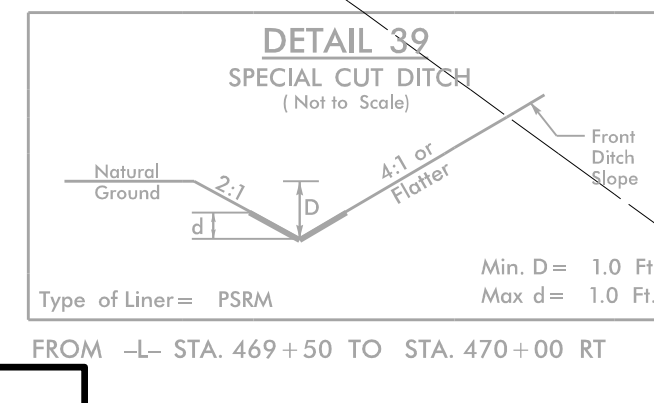
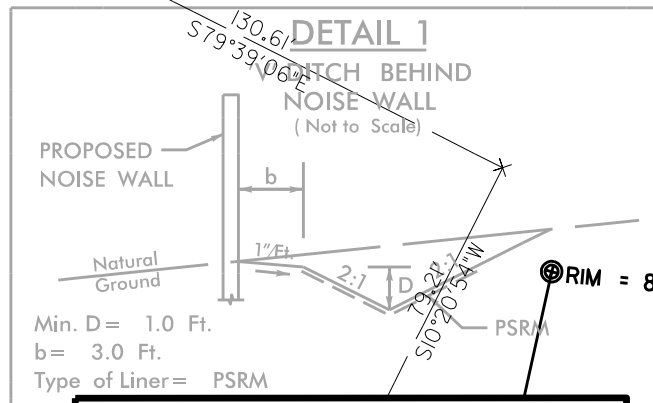
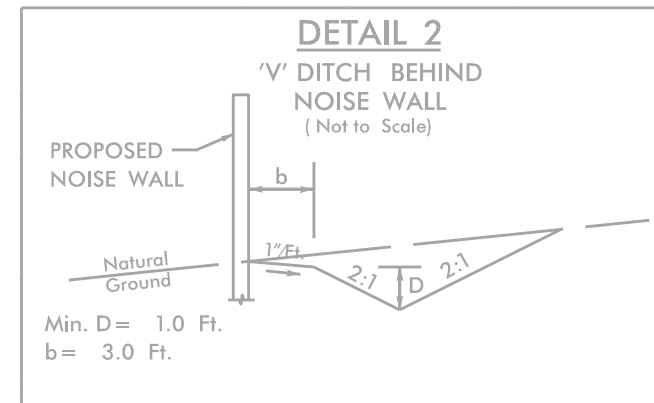
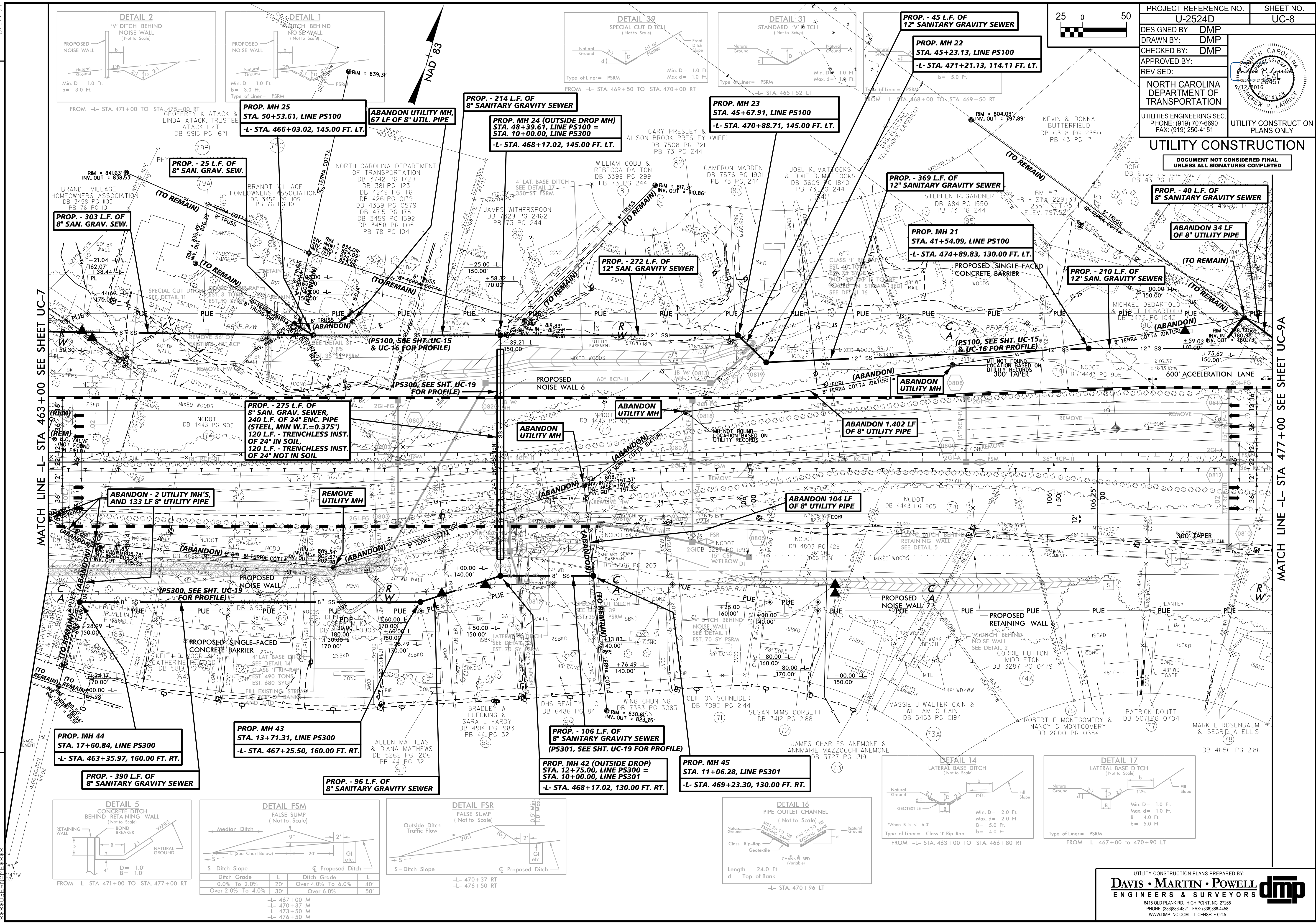


UTILITY CONSTRUCTION

DOCUMENT NOT CONSIDERED FINAL UNLESS ALL SIGNATURES COMPLETED



FROM -L- STA. 471+00 TO STA. 475+00 RT

PROP. MH 25
 STA. 50+53.61, LINE PS100
 -L- STA. 466+03.02, 145.00 FT. LT.

ABANDON UTILITY MH,
 67 LF OF 8" UTIL. PIPE

PROP. - 214 L.F. OF
 8" SANITARY GRAVITY SEWER
PROP. MH 24 (OUTSIDE DROP MH)
 STA. 48+39.61, LINE PS100 =
 STA. 10+00.00, LINE PS300
 -L- STA. 468+17.02, 145.00 FT. LT.

PROP. MH 23
 STA. 45+67.91, LINE PS100
 -L- STA. 470+88.71, 145.00 FT. LT.

PROP. - 45 L.F. OF
 12" SANITARY GRAVITY SEWER
PROP. MH 22
 STA. 45+23.13, LINE PS100
 -L- STA. 471+21.13, 114.11 FT. LT.
 b = 5.0 Ft.

PROP. - 25 L.F. OF
 8" SAN. GRAV. SEW.

PROP. - 303 L.F. OF
 8" SAN. GRAV. SEW.

PROP. - 272 L.F. OF
 12" SAN. GRAVITY SEWER

PROP. - 369 L.F. OF
 12" SANITARY GRAVITY SEWER

PROP. MH 21
 STA. 41+54.09, LINE PS100
 -L- STA. 474+89.83, 130.00 FT. LT.

PROP. - 40 L.F. OF
 8" SANITARY GRAVITY SEWER

ABANDON 34 LF
 OF 8" UTILITY PIPE

PROP. - 210 L.F. OF
 12" SAN. GRAVITY SEWER

PROP. - 275 L.F. OF
 8" SAN. GRAV. SEWER,
 240 L.F. OF 24" ENC. PIPE
 (STEEL, MIN W.T. = 0.375")
 120 L.F. - TRENCHLESS INST.
 OF 24" IN SOIL,
 120 L.F. - TRENCHLESS INST.
 OF 24" NOT IN SOIL

ABANDON UTILITY MH

ABANDON 1,402 LF
 OF 8" UTILITY PIPE

ABANDON 104 LF
 OF 8" UTILITY PIPE

ABANDON 2 UTILITY MH'S,
 AND 133 LF 8" UTILITY PIPE

REMOVE UTILITY MH

PROP. MH 43
 STA. 13+71.31, LINE PS300
 -L- STA. 467+25.50, 160.00 FT. RT.

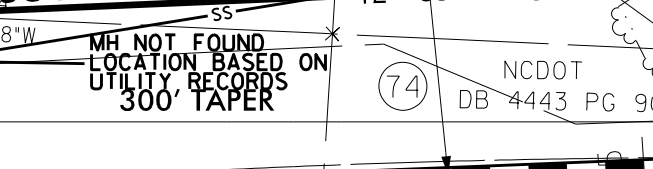
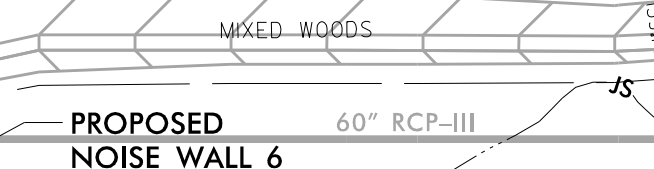
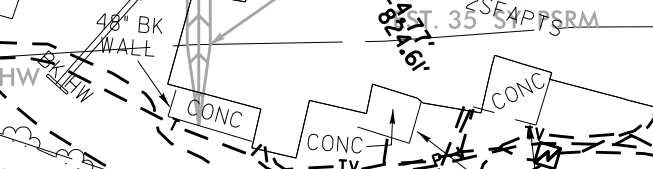
PROP. MH 44
 STA. 17+60.84, LINE PS300
 -L- STA. 463+35.97, 160.00 FT. RT.

PROP. - 96 L.F. OF
 8" SANITARY GRAVITY SEWER

PROP. - 106 L.F. OF
 8" SANITARY GRAVITY SEWER
 (PS301, SEE SHT. UC-19 FOR PROFILE)

PROP. MH 42 (OUTSIDE DROP)
 STA. 12+75.00, LINE PS300 =
 STA. 10+00.00, LINE PS301
 -L- STA. 468+17.02, 130.00 FT. RT.

PROP. MH 45
 STA. 11+06.28, LINE PS301
 -L- STA. 469+23.30, 130.00 FT. RT.



FROM -L- STA. 471+00 TO STA. 477+00 RT

PROP. MH 43
 STA. 13+71.31, LINE PS300
 -L- STA. 467+25.50, 160.00 FT. RT.

PROP. - 96 L.F. OF
 8" SANITARY GRAVITY SEWER

PROP. - 106 L.F. OF
 8" SANITARY GRAVITY SEWER
 (PS301, SEE SHT. UC-19 FOR PROFILE)

PROP. MH 42 (OUTSIDE DROP)
 STA. 12+75.00, LINE PS300 =
 STA. 10+00.00, LINE PS301
 -L- STA. 468+17.02, 130.00 FT. RT.

PROP. MH 45
 STA. 11+06.28, LINE PS301
 -L- STA. 469+23.30, 130.00 FT. RT.

PROP. MH 44
 STA. 17+60.84, LINE PS300
 -L- STA. 463+35.97, 160.00 FT. RT.

PROP. - 96 L.F. OF
 8" SANITARY GRAVITY SEWER

PROP. - 106 L.F. OF
 8" SANITARY GRAVITY SEWER
 (PS301, SEE SHT. UC-19 FOR PROFILE)

PROP. MH 42 (OUTSIDE DROP)
 STA. 12+75.00, LINE PS300 =
 STA. 10+00.00, LINE PS301
 -L- STA. 468+17.02, 130.00 FT. RT.

PROP. MH 45
 STA. 11+06.28, LINE PS301
 -L- STA. 469+23.30, 130.00 FT. RT.

PROP. MH 44
 STA. 17+60.84, LINE PS300
 -L- STA. 463+35.97, 160.00 FT. RT.

PROP. - 96 L.F. OF
 8" SANITARY GRAVITY SEWER

PROP. - 106 L.F. OF
 8" SANITARY GRAVITY SEWER
 (PS301, SEE SHT. UC-19 FOR PROFILE)

PROP. MH 42 (OUTSIDE DROP)
 STA. 12+75.00, LINE PS300 =
 STA. 10+00.00, LINE PS301
 -L- STA. 468+17.02, 130.00 FT. RT.

PROP. MH 45
 STA. 11+06.28, LINE PS301
 -L- STA. 469+23.30, 130.00 FT. RT.

PROP. MH 44
 STA. 17+60.84, LINE PS300
 -L- STA. 463+35.97, 160.00 FT. RT.

PROP. - 96 L.F. OF
 8" SANITARY GRAVITY SEWER

PROP. - 106 L.F. OF
 8" SANITARY GRAVITY SEWER
 (PS301, SEE SHT. UC-19 FOR PROFILE)

PROP. MH 42 (OUTSIDE DROP)
 STA. 12+75.00, LINE PS300 =
 STA. 10+00.00, LINE PS301
 -L- STA. 468+17.02, 130.00 FT. RT.

PROP. MH 45
 STA. 11+06.28, LINE PS301
 -L- STA. 469+23.30, 130.00 FT. RT.

PROP. MH 44
 STA. 17+60.84, LINE PS300
 -L- STA. 463+35.97, 160.00 FT. RT.

PROP. - 96 L.F. OF
 8" SANITARY GRAVITY SEWER

PROP. - 106 L.F. OF
 8" SANITARY GRAVITY SEWER
 (PS301, SEE SHT. UC-19 FOR PROFILE)

PROP. MH 42 (OUTSIDE DROP)
 STA. 12+75.00, LINE PS300 =
 STA. 10+00.00, LINE PS301
 -L- STA. 468+17.02, 130.00 FT. RT.

PROP. MH 45
 STA. 11+06.28, LINE PS301
 -L- STA. 469+23.30, 130.00 FT. RT.

PROP. MH 44
 STA. 17+60.84, LINE PS300
 -L- STA. 463+35.97, 160.00 FT. RT.

PROP. - 96 L.F. OF
 8" SANITARY GRAVITY SEWER

PROP. - 106 L.F. OF
 8" SANITARY GRAVITY SEWER
 (PS301, SEE SHT. UC-19 FOR PROFILE)

PROP. MH 42 (OUTSIDE DROP)
 STA. 12+75.00, LINE PS300 =
 STA. 10+00.00, LINE PS301
 -L- STA. 468+17.02, 130.00 FT. RT.

PROP. MH 45
 STA. 11+06.28, LINE PS301
 -L- STA. 469+23.30, 130.00 FT. RT.

PROP. MH 44
 STA. 17+60.84, LINE PS300
 -L- STA. 463+35.97, 160.00 FT. RT.

PROP. - 96 L.F. OF
 8" SANITARY GRAVITY SEWER

PROP. - 106 L.F. OF
 8" SANITARY GRAVITY SEWER
 (PS301, SEE SHT. UC-19 FOR PROFILE)

PROP. MH 42 (OUTSIDE DROP)
 STA. 12+75.00, LINE PS300 =
 STA. 10+00.00, LINE PS301
 -L- STA. 468+17.02, 130.00 FT. RT.

PROP. MH 45
 STA. 11+06.28, LINE PS301
 -L- STA. 469+23.30, 130.00 FT. RT.

PROP. MH 44
 STA. 17+60.84, LINE PS300
 -L- STA. 463+35.97, 160.00 FT. RT.

PROP. - 96 L.F. OF
 8" SANITARY GRAVITY SEWER

PROP. - 106 L.F. OF
 8" SANITARY GRAVITY SEWER
 (PS301, SEE SHT. UC-19 FOR PROFILE)

PROP. MH 42 (OUTSIDE DROP)
 STA. 12+75.00, LINE PS300 =
 STA. 10+00.00, LINE PS301
 -L- STA. 468+17.02, 130.00 FT. RT.

PROP. MH 45
 STA. 11+06.28, LINE PS301
 -L- STA. 469+23.30, 130.00 FT. RT.

PROP. MH 44
 STA. 17+60.84, LINE PS300
 -L- STA. 463+35.97, 160.00 FT. RT.

PROP. - 96 L.F. OF
 8" SANITARY GRAVITY SEWER

PROP. - 106 L.F. OF
 8" SANITARY GRAVITY SEWER
 (PS301, SEE SHT. UC-19 FOR PROFILE)

PROP. MH 42 (OUTSIDE DROP)
 STA. 12+75.00, LINE PS300 =
 STA. 10+00.00, LINE PS301
 -L- STA. 468+17.02, 130.00 FT. RT.

PROP. MH 45
 STA. 11+06.28, LINE PS301
 -L- STA. 469+23.30, 130.00 FT. RT.

PROP. MH 44
 STA. 17+60.84, LINE PS300
 -L- STA. 463+35.97, 160.00 FT. RT.

PROP. - 96 L.F. OF
 8" SANITARY GRAVITY SEWER

PROP. - 106 L.F. OF
 8" SANITARY GRAVITY SEWER
 (PS301, SEE SHT. UC-19 FOR PROFILE)

PROP. MH 42 (OUTSIDE DROP)
 STA. 12+75.00, LINE PS300 =
 STA. 10+00.00, LINE PS301
 -L- STA. 468+17.02, 130.00 FT. RT.

PROP. MH 45
 STA. 11+06.28, LINE PS301
 -L- STA. 469+23.30, 130.00 FT. RT.