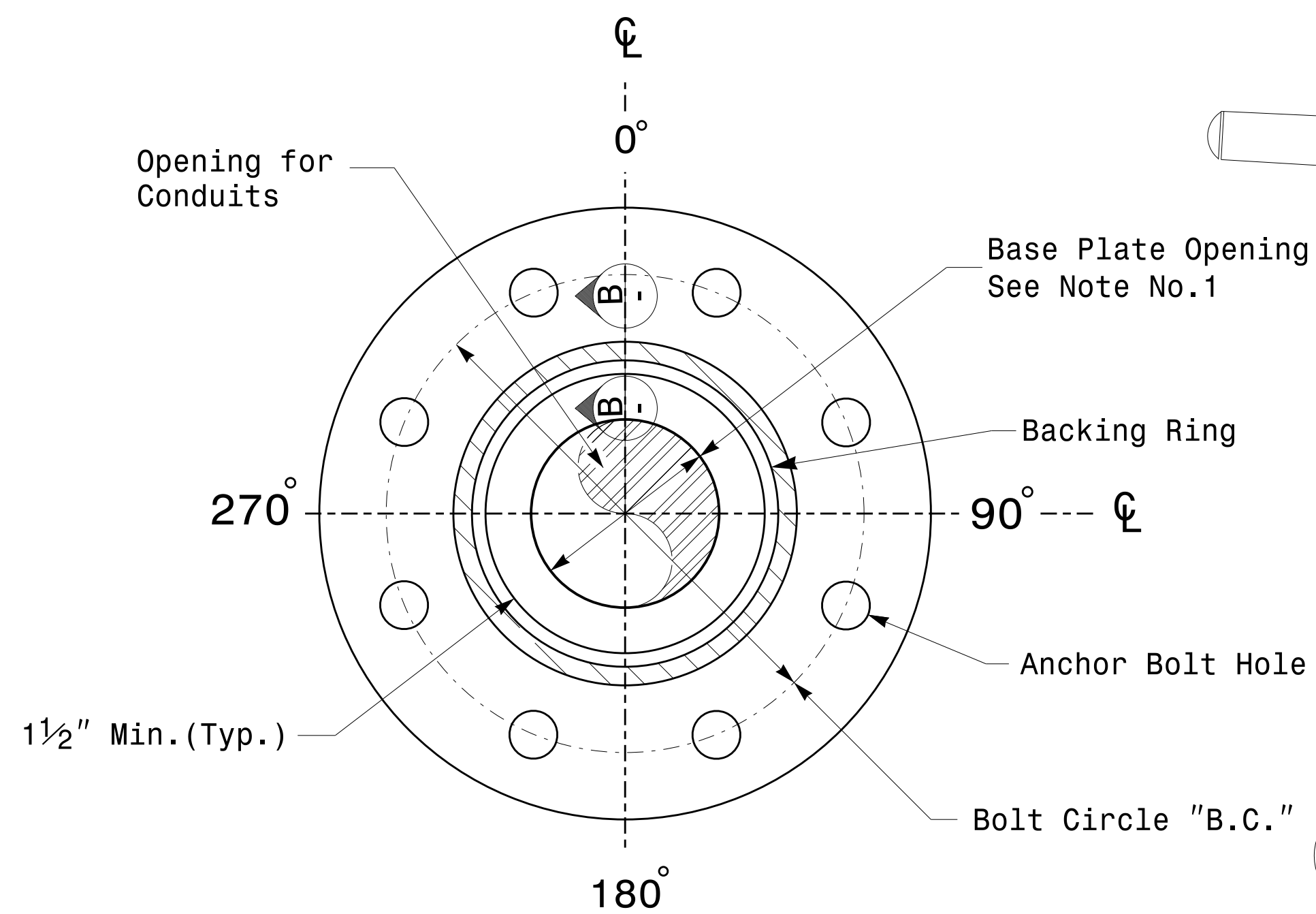
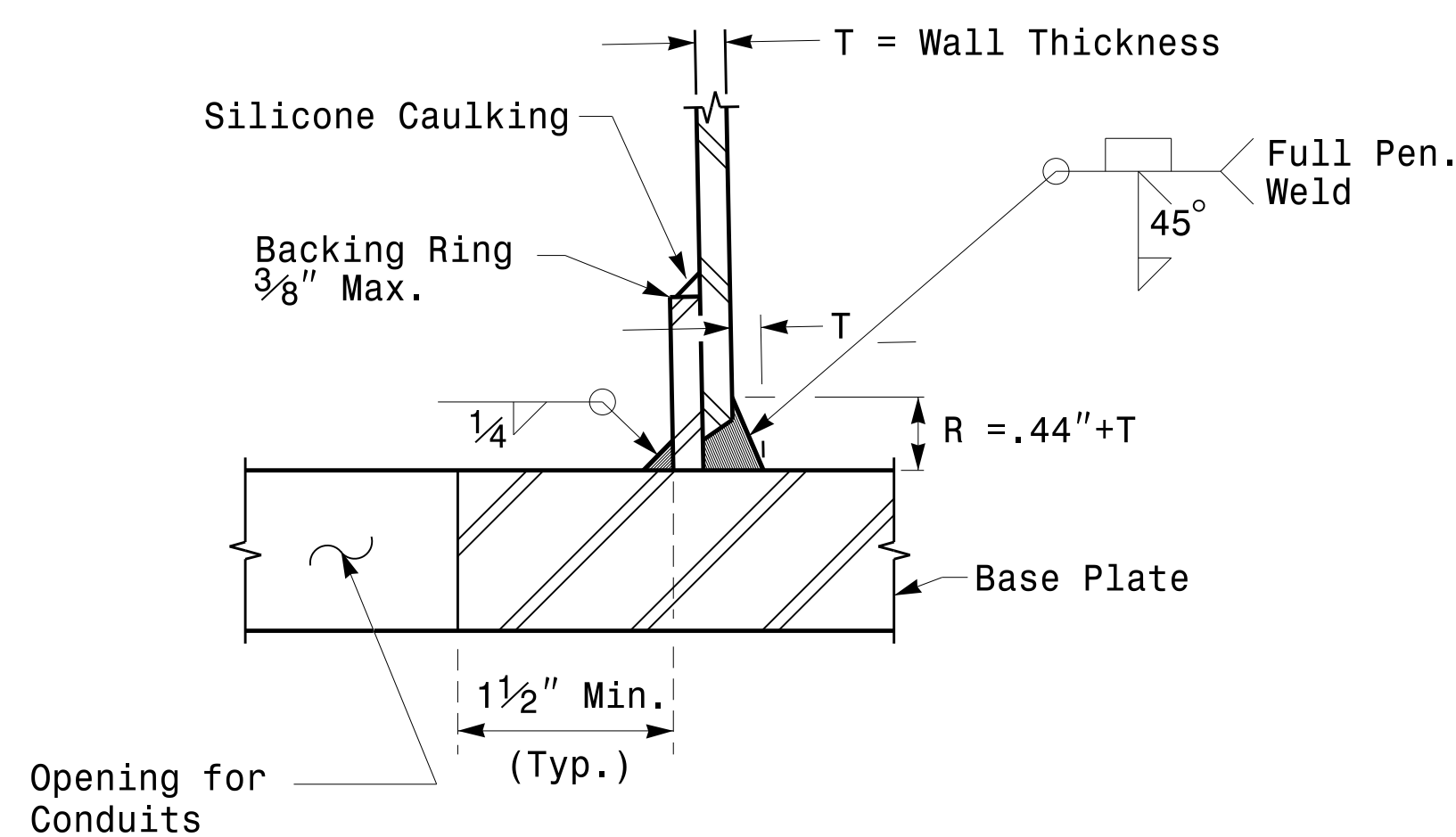


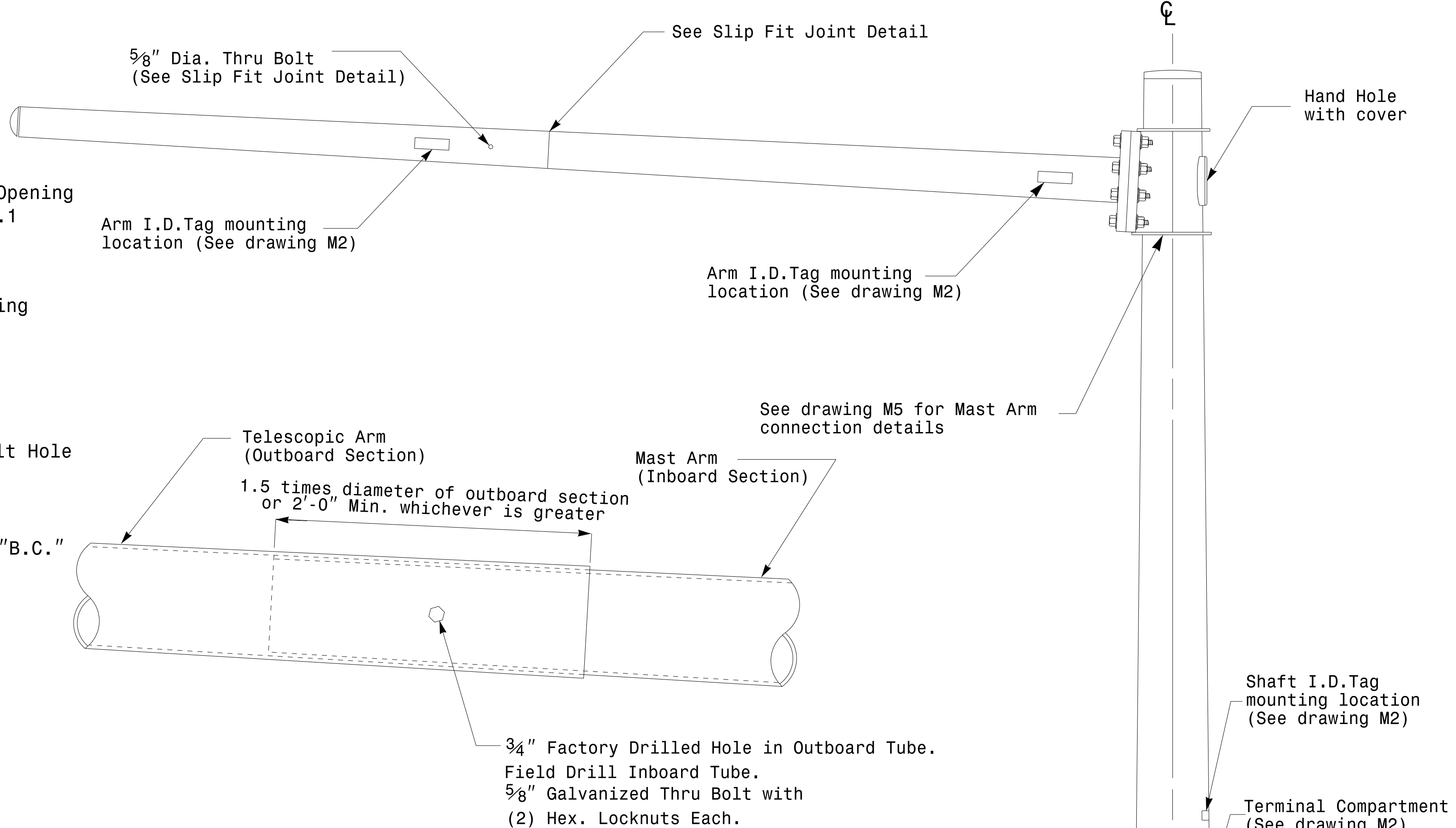
Note:
1. Opening in pole base plate shall be equal to pole base inside diameter minus $3\frac{1}{2}$ " but shall not be less than $8\frac{1}{2}$ ".



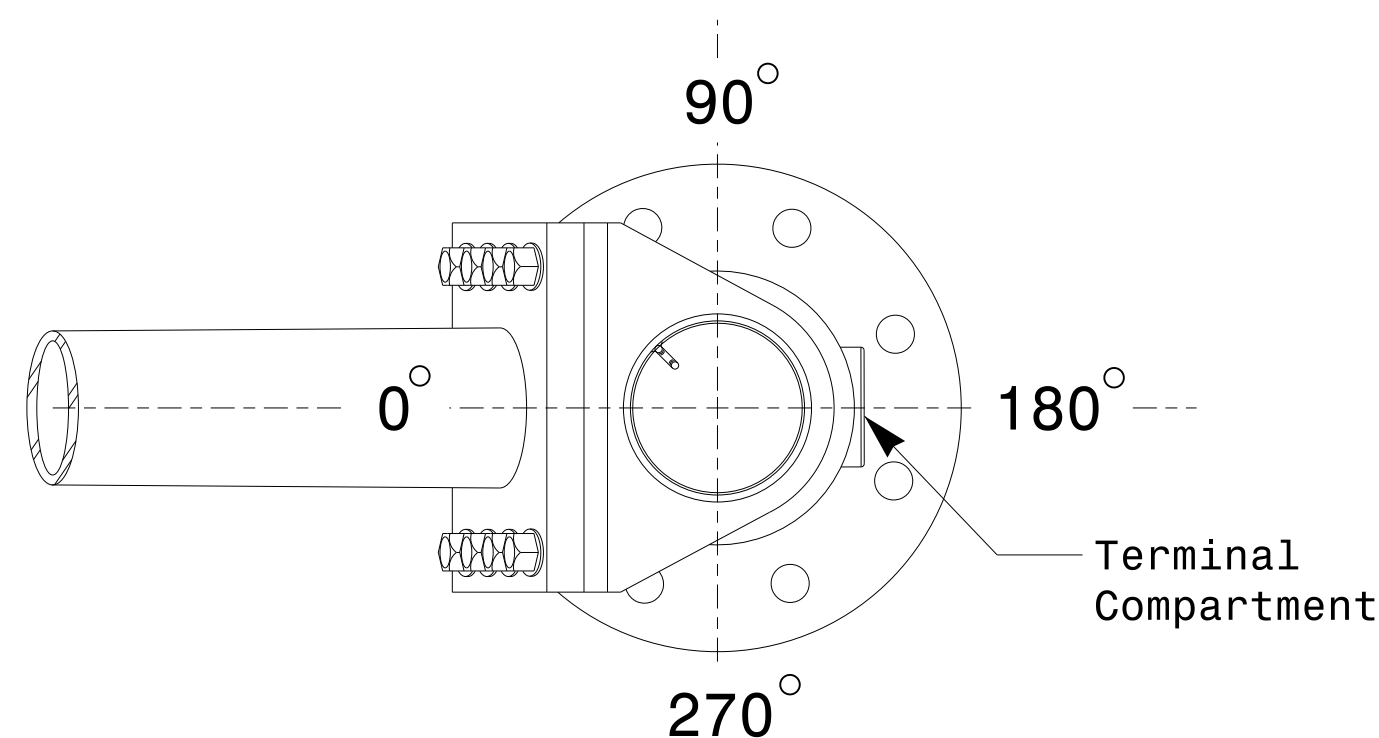
Section A-A
Pole Base Plate Details



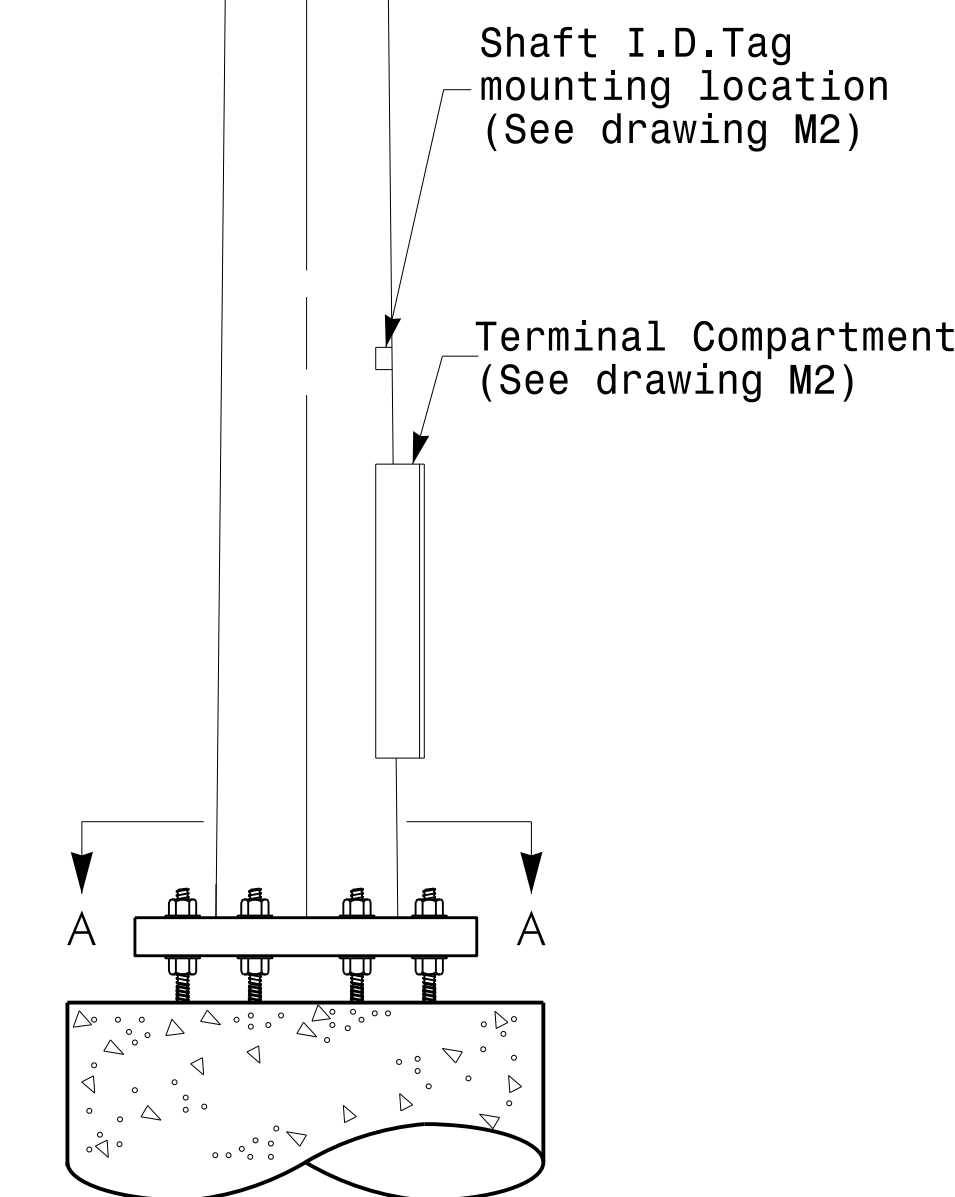
Section B-B
(Pole Attachment to Base Plate)
Full-Penetration Groove Weld Detail



Slip Fit Joint Detail for Mast Arm



Mast Arm Radial Orientation



Mast Arm Pole

17-FEB-2016 16:05
U:\CS\04115_Sig.M4\Sig.M4.dgn
17-FEB-2016 16:05
U:\CS\04115_Sig.M4\Sig.M4.dgn

Prepared in the Offices of: 750 N. Greenfield Pkwy, Garner, NC 27529	Typical Fabrication Details For Mast Arm Poles		SEAL DocuSigned by: 44E8E32E147E4C4...
	PLAN DATE: FEBRUARY 2016 PREPARED BY: N. BITTING	DESIGNED BY: K.C. DURIGON REVIEWED BY: D.C. SARKAR	

Fabrication Details - Mast Arm Poles