

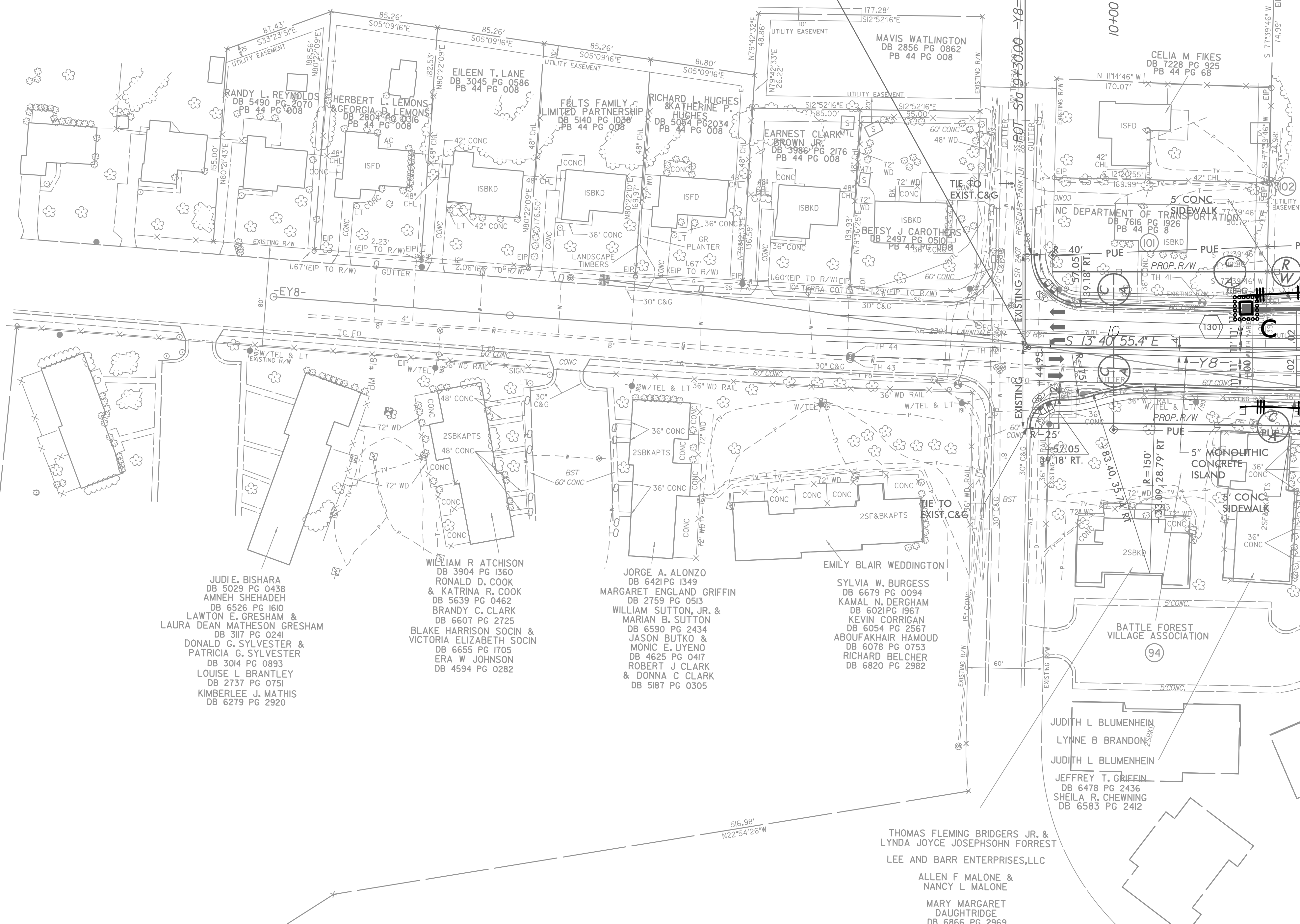
PROJECT REFERENCE NO.	SHEET NO.
U-2524D	EC-28/CONST.13
RW SHEET NO.	
ROADWAY DESIGN ENGINEER	HYDRAULICS ENGINEER



INSTALL MATTING FOR EROSION CONTROL IN PROPOSED DITCH LINES. (SEE MATTING SUMMARY)

UTILIZE FABRIC INSERT INLET PROTECTION DEVICE IN LIEU OF ROCK INLET SEDIMENT TRAP TYPE 'C' TO AVOID IMPOUNDING RUNOFF ON ROADWAY OPEN TO PUBLIC AND AS DIRECTED.

BEGIN CONST. 9+33.05 -Y8- EXIST.



MATCH LINE -Y8- STA 11+50 SEE SHEET 9

JUDIE BISHARA
 DB 5029 PG 0438
 AMNEH SHEHADEH
 DB 6526 PG 1610
 LAWTON E. GRESHAM &
 LAURA DEAN MATHESON GRESHAM
 DB 3117 PG 0241
 DONALD G. SYLVESTER &
 PATRICIA G. SYLVESTER
 DB 3014 PG 0893
 LOUISE L. BRANTLEY
 DB 2737 PG 0751
 KIMBERLEE J. MATHIS
 DB 6279 PG 2920

WILLIAM R. ATCHISON
 DB 3904 PG 1360
 RONALD D. COOK &
 KATRINA R. COOK
 DB 5639 PG 0462
 BRANDY C. CLARK
 DB 6607 PG 2725
 BLAKE HARRISON SOCIN &
 VICTORIA ELIZABETH SOCIN
 DB 6655 PG 1705
 ERA W. JOHNSON
 DB 4594 PG 0282

JORGE A. ALONZO
 DB 6421 PG 1349
 MARGARET ENGLAND GRIFFIN
 DB 2759 PG 0513
 WILLIAM SUTTON, JR. &
 MARIAN B. SUTTON
 DB 6590 PG 2434
 JASON BUTKO &
 MONIC E. UYENO
 DB 4625 PG 0417
 ROBERT J. CLARK &
 DONNA C. CLARK
 DB 5187 PG 0305

EMILY BLAIR WEDDINGTON
 SYLVIA W. BURGESS
 DB 6679 PG 0094
 KAMAL N. DERGHAM
 DB 6021 PG 1967
 KEVIN CORRIGAN
 DB 6054 PG 2567
 ABOLUFAKHAIR HAMOUD
 DB 6078 PG 0753
 RICHARD BELCHER
 DB 6820 PG 2982

THOMAS FLEMING BRIDGERS JR. &
 LYNDA JOYCE JOSEPHSOHN FORREST
 LEE AND BARR ENTERPRISES, LLC
 ALLEN F. MALONE &
 NANCY L. MALONE
 MARY MARGARET
 DAUGHTRIDGE
 DB 6866 PG 2969

NOTE:
 SEE SHEET 22 FOR -Y8- PROFILE