

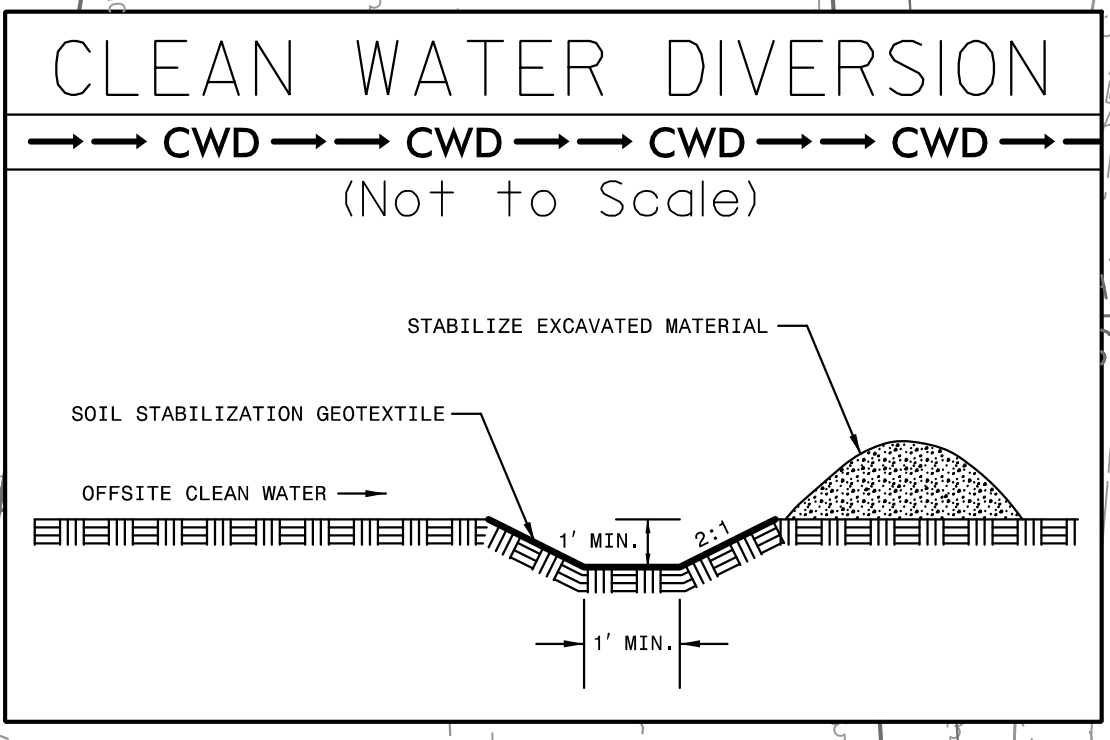
5/14/99

# -Y8\_DET-

NOTE:  
 SEE SHEET 2B-6 FOR -Y8\_DET- PROFILE.  
 SEE SHEET 2A-10 FOR TYPICAL SECTION & PAVEMENT DESIGN.  
 SEE SHEETS TMP-14 & TMP-16 FOR PHASING OVERVIEW AND SHEETS TMP-15 & TMP-17 FOR SECTION VIEWS.

**HNTB** HNTB NORTH CAROLINA, P.C.  
 343 E. Six Forks Road, Suite 200  
 Raleigh, North Carolina 27609  
 NC License No: C-1554

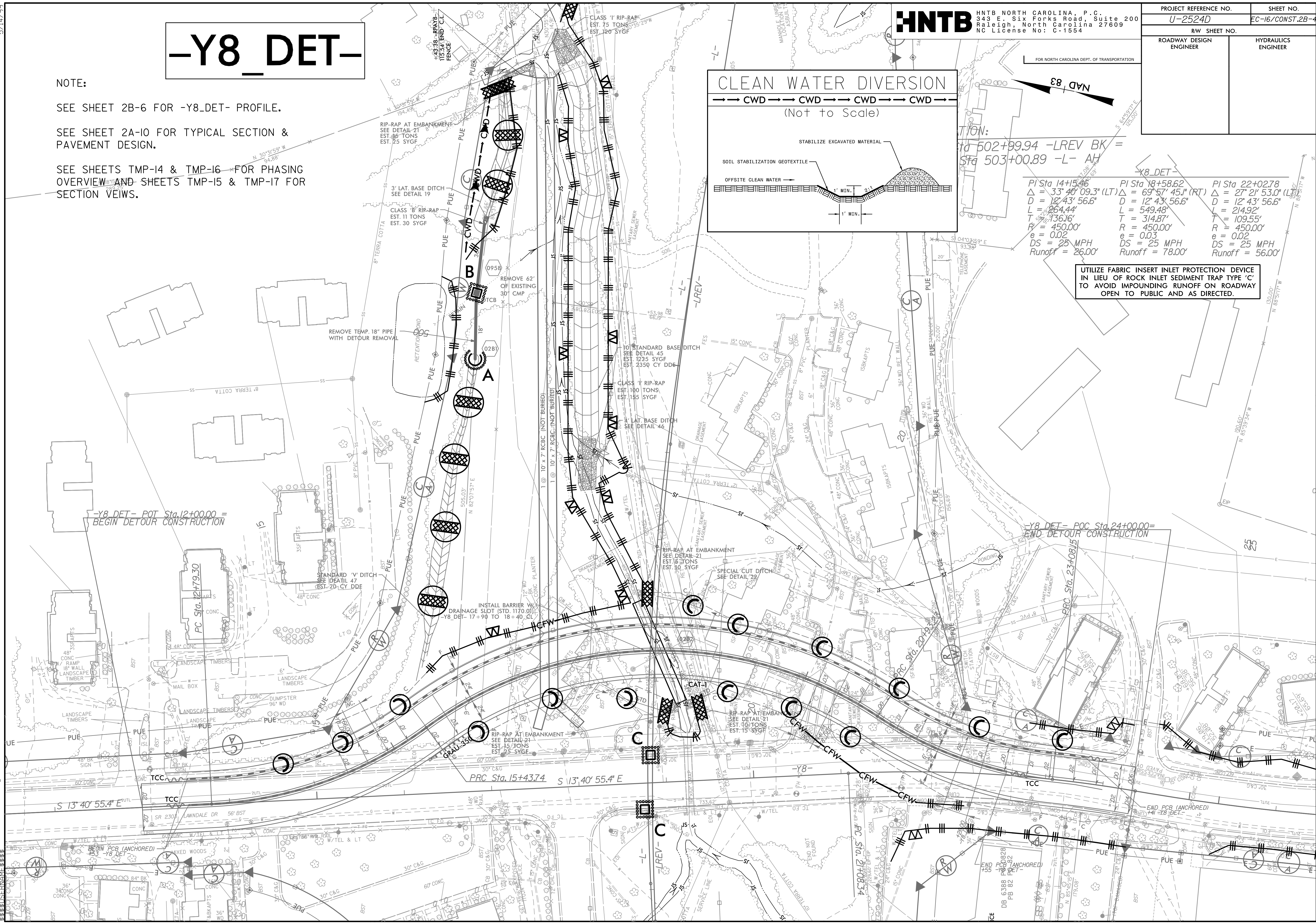
PROJECT REFERENCE NO.	SHEET NO.
U-2524D	EC-16/CONST.2B-4
RW SHEET NO.	
ROADWAY DESIGN ENGINEER	HYDRAULICS ENGINEER



STATION:  
 Sta 502+99.94 -LREV BK =  
 Sta 503+00.89 -L- AH

-Y8_DET-		
PI Sta 14+15.46	PI Sta 18+58.62	PI Sta 22+02.78
$\Delta = 33^\circ 40' 09.3''$ (LT)	$\Delta = 69^\circ 57' 45.1''$ (RT)	$\Delta = 27^\circ 21' 53.0''$ (LT)
$D = 12' 43.566''$	$D = 12' 43.566''$	$D = 12' 43.566''$
$L = 264.44'$	$L = 549.48'$	$L = 214.92'$
$T = 136.16'$	$T = 314.87'$	$T = 109.55'$
$R = 450.00'$	$R = 450.00'$	$R = 450.00'$
$e = 0.02$	$e = 0.03$	$e = 0.02$
$DS = 25$ MPH	$DS = 25$ MPH	$DS = 25$ MPH
$Runoff = 26.00'$	$Runoff = 78.00'$	$Runoff = 56.00'$

UTILIZE FABRIC INSERT INLET PROTECTION DEVICE IN LIEU OF ROCK INLET SEDIMENT TRAP TYPE 'C' TO AVOID IMPOUNDING RUNOFF ON ROADWAY OPEN TO PUBLIC AND AS DIRECTED.



11/4/22 AV 2524D-EC.PSH-02B-4.dgn  
 5:33:33 PM