

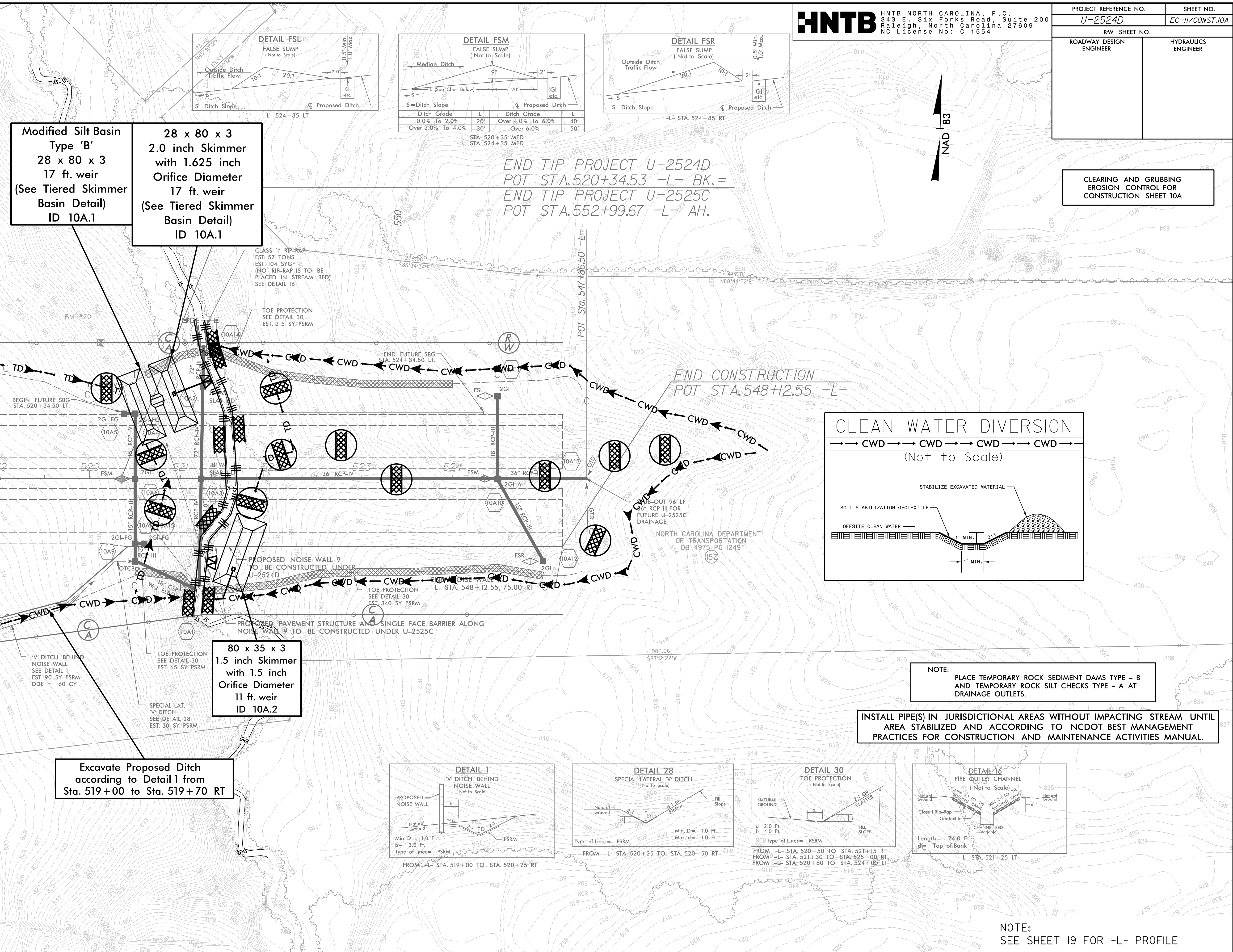
8/17/99

9:36:41 AM
C:\p01\proj\U2524D.CG.PSH.10A.dgn
3:33:33 PM

PROJECT REFERENCE NO.	SHEET NO.
U-2524D	EC-II/CONST.10A
RW SHEET NO.	
ROADWAY DESIGN ENGINEER	HYDRAULICS ENGINEER



MATCH LINE -L- STA 519+00 SEE SHEET 10



**Modified Silt Basin
Type 'B'**
 28 x 80 x 3
 17 ft. weir
 (See Tiered Skimmer
Basin Detail)
 ID 10A.1

**28 x 80 x 3
2.0 inch Skimmer
with 1.625 inch
Orifice Diameter
17 ft. weir
(See Tiered Skimmer
Basin Detail)
ID 10A.1**

**80 x 35 x 3
1.5 inch Skimmer
with 1.5 inch
Orifice Diameter
11 ft. weir
ID 10A.2**

**Excavate Proposed Ditch
according to Detail 1 from
Sta. 519+00 to Sta. 519+70 RT**

CLASS 1 RIP-RAP
EST. 57 TONS
EST. 104 SYGF
(NO RIP-RAP IS TO BE
PLACED IN STREAM BED)
SEE DETAIL 16

TOE PROTECTION
SEE DETAIL 30
EST. 315 SY-PSRM

TOE PROTECTION
SEE DETAIL 30
EST. 340 SY-PSRM

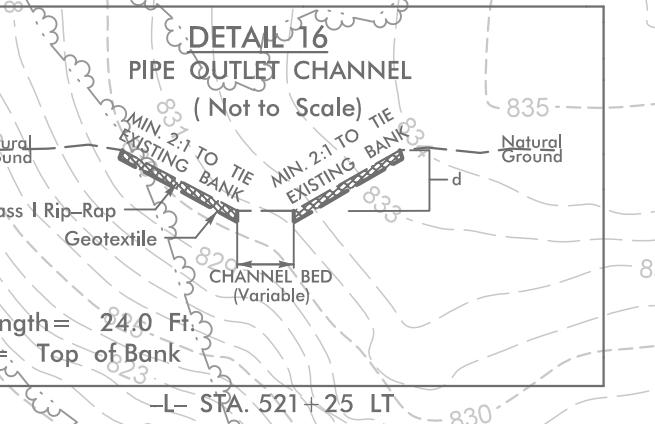
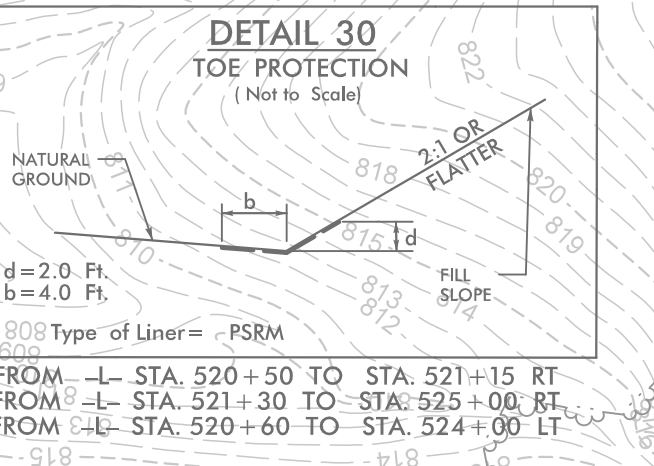
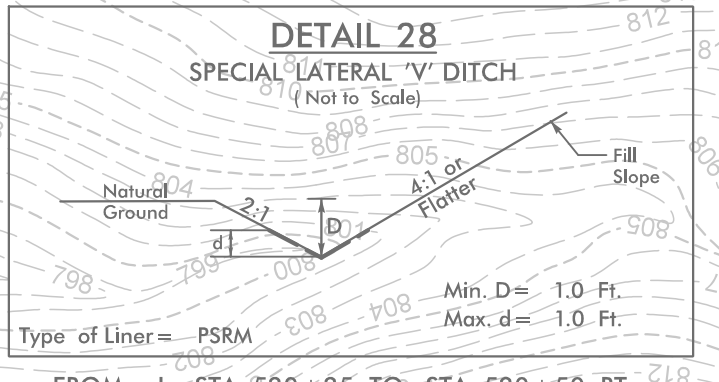
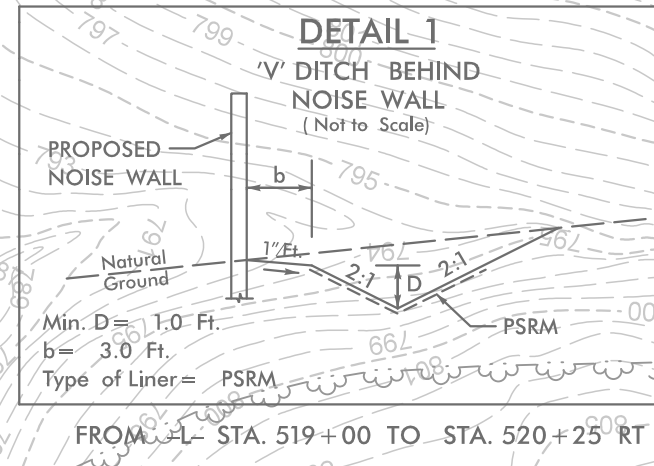
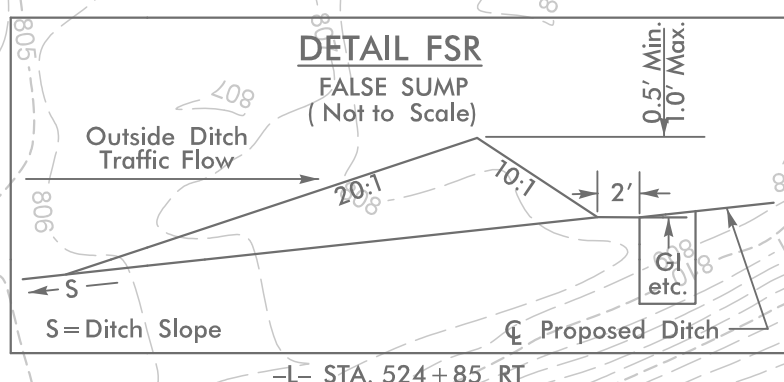
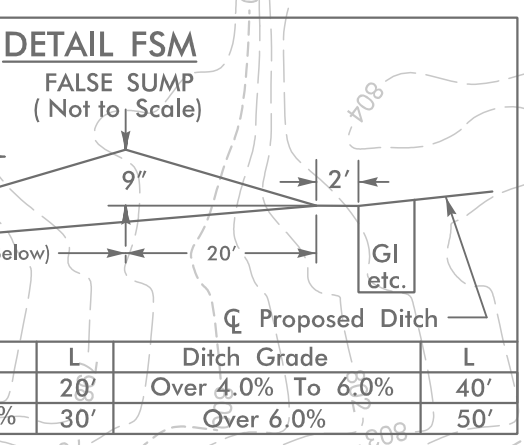
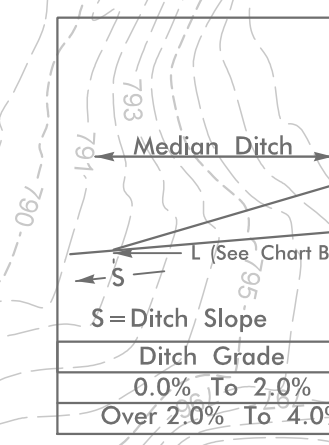
PROPOSED PAVEMENT STRUCTURE AND SINGLE FACE BARRIER ALONG
NOISE WALL 9 TO BE CONSTRUCTED UNDER U-2525C

'V' DITCH BEHIND
NOISE WALL
SEE DETAIL 1
EST. 90 SY-PSRM
DDE = 60 CY

TOE PROTECTION
SEE DETAIL 30
EST. 65 SY-PSRM

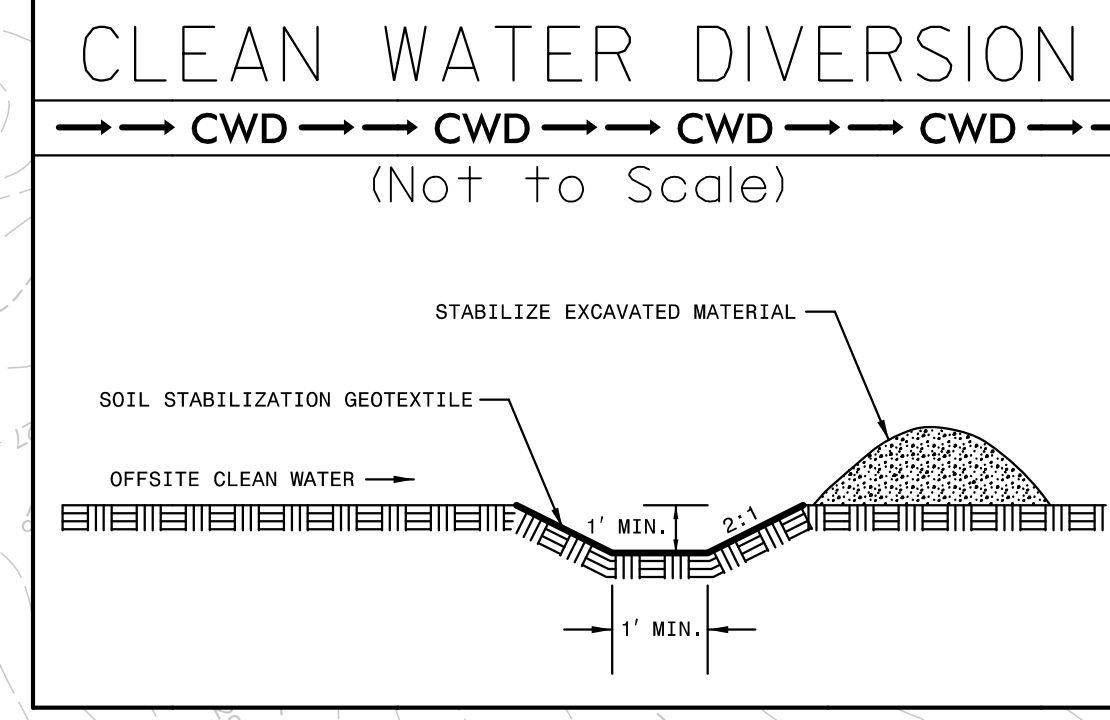
SPECIAL LAT.
'V' DITCH
SEE DETAIL 28
EST. 30 SY-PSRM

TOE PROTECTION
SEE DETAIL 30
EST. 315 SY-PSRM



END TIP PROJECT U-2524D
 POT STA. 520+34.53 -L- BK.=
 END TIP PROJECT U-2525C
 POT STA. 552+99.67 -L- AH.

END CONSTRUCTION
 POT STA. 548+12.55 -L-



NOTE:
 PLACE TEMPORARY ROCK SEDIMENT DAMS TYPE - B
 AND TEMPORARY ROCK SILT CHECKS TYPE - A AT
 DRAINAGE OUTLETS.

**INSTALL PIPE(S) IN JURISDICTIONAL AREAS WITHOUT IMPACTING STREAM UNTIL
 AREA STABILIZED AND ACCORDING TO NCDOT BEST MANAGEMENT
 PRACTICES FOR CONSTRUCTION AND MAINTENANCE ACTIVITIES MANUAL.**

NOTE:
 SEE SHEET 19 FOR -L- PROFILE