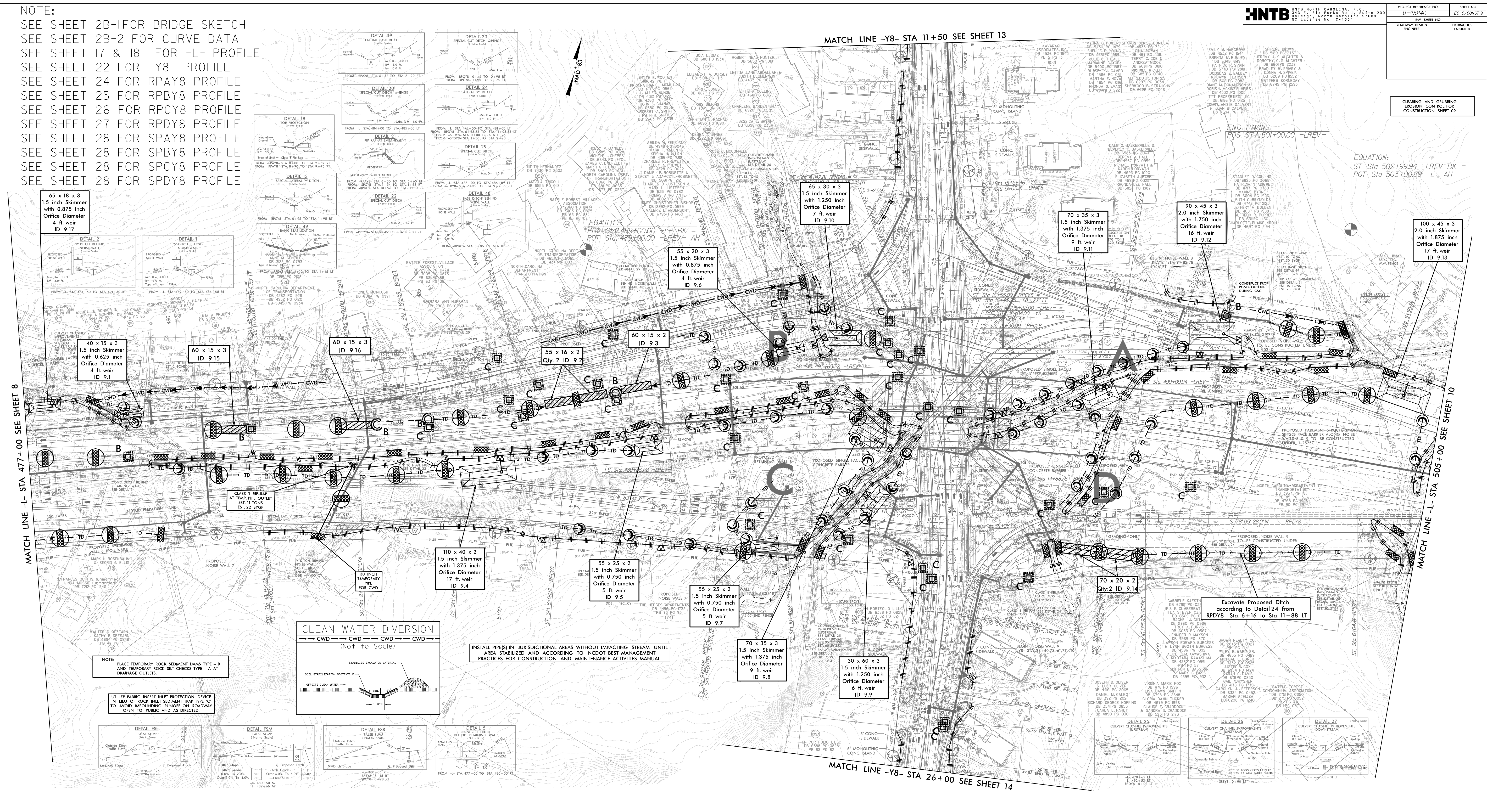


NOTE:  
 SEE SHEET 2B-1 FOR BRIDGE SKETCH  
 SEE SHEET 2B-2 FOR CURVE DATA  
 SEE SHEET 17 & 18 FOR -L- PROFILE  
 SEE SHEET 22 FOR -Y8- PROFILE  
 SEE SHEET 24 FOR RPY8 PROFILE  
 SEE SHEET 25 FOR RPBY8 PROFILE  
 SEE SHEET 26 FOR RPCY8 PROFILE  
 SEE SHEET 27 FOR RPDY8 PROFILE  
 SEE SHEET 28 FOR SPAY8 PROFILE  
 SEE SHEET 28 FOR SPBY8 PROFILE  
 SEE SHEET 28 FOR SPCY8 PROFILE  
 SEE SHEET 28 FOR SPDY8 PROFILE

CLEARING AND GRUBBING  
 EROSION CONTROL FOR  
 CONSTRUCTION SHEET 09

EQUATION:  
 ST Sta 502+99.94 -LREV BK =  
 POT Sta 503+00.89 -L- AH



MATCH LINE -L- STA 477+00 SEE SHEET 8

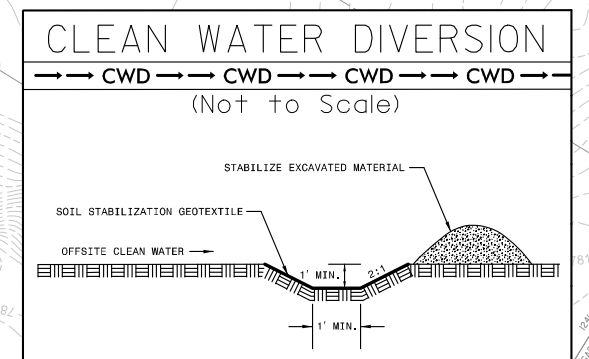
MATCH LINE -L- STA 505+00 SEE SHEET 10

MATCH LINE -Y8- STA 11+50 SEE SHEET 13

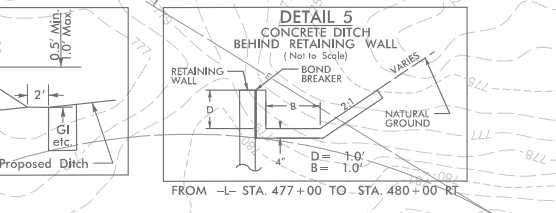
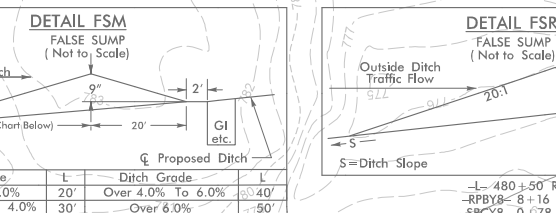
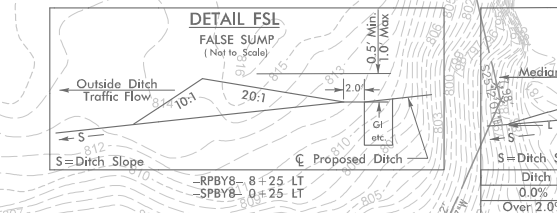
MATCH LINE -Y8- STA 26+00 SEE SHEET 14

NOTE:  
 PLACE TEMPORARY ROCK SEDIMENT BANK TYPE -B  
 AND TEMPORARY ROCK SILT CHECKS TYPE -A AT  
 DRAINAGE OUTLETS.

UTILIZE FABRIC INSERT INLET PROTECTION DEVICE  
 IN LIEU OF ROCK INLET SEDIMENT TRAP TYPE -C  
 TO AVOID INUNDATING RUNOFF ON ROADWAY  
 OPEN TO PUBLIC AND AS DIRECTED.



INSTALL PIPES IN JURISDICTIONAL AREAS WITHOUT IMPACTING STREAM UNTIL  
 AREA STABILIZED AND ACCORDING TO NCDOT BEST MANAGEMENT  
 PRACTICES FOR CONSTRUCTION AND MAINTENANCE ACTIVITIES MANUAL



9:33:24 AM 1/25/24 D:\CC\_PSH\_09.dgn  
 \$\$\$\$\$\$FILENAME\$\$\$\$\$\$