

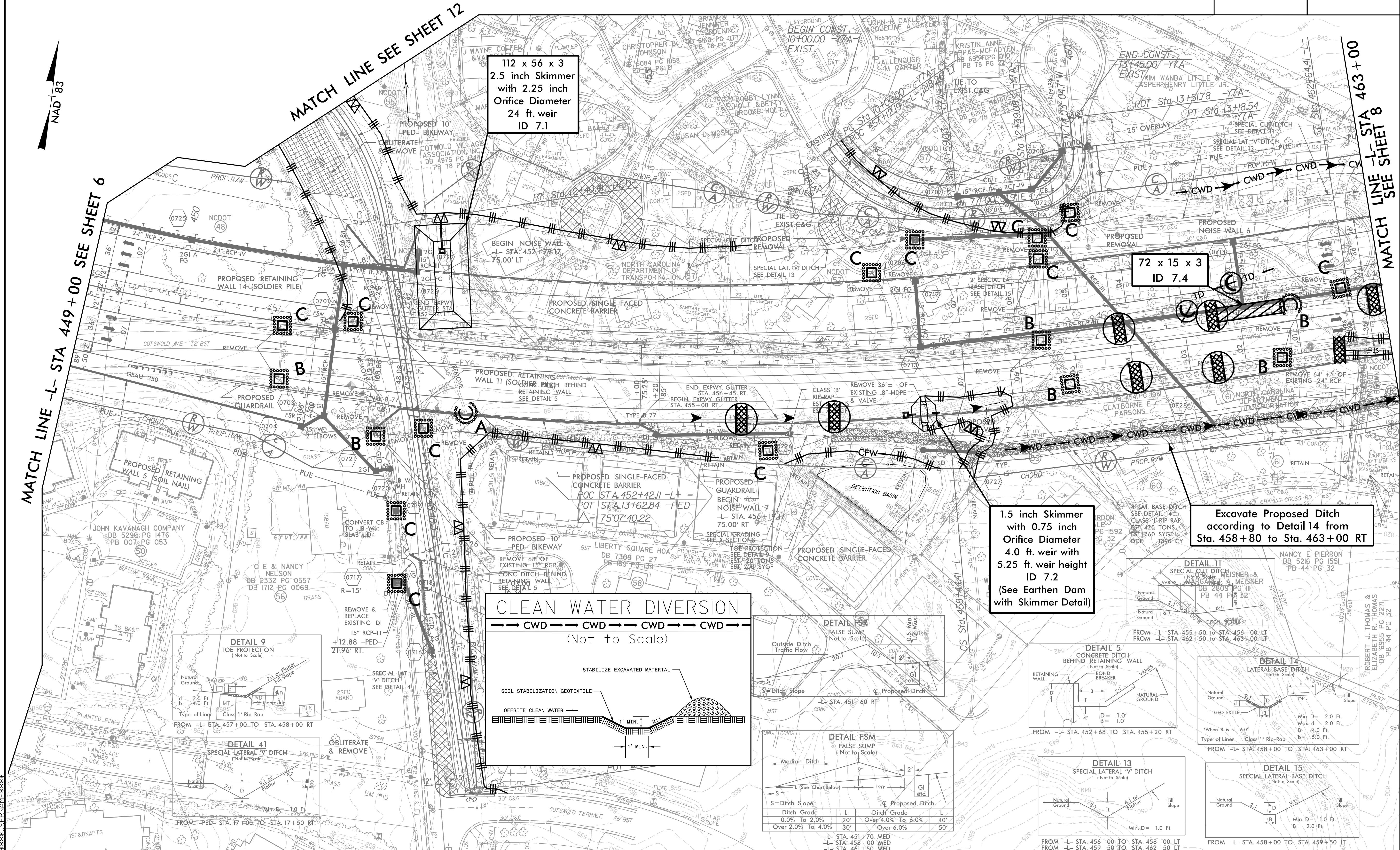
PROJECT REFERENCE NO.	SHEET NO.
U-2524D	EC-7/CONST.7
RW SHEET NO.	
ROADWAY DESIGN ENGINEER	HYDRAULICS ENGINEER

NOTE:
 PLACE TEMPORARY ROCK SEDIMENT DAMS TYPE - B AND TEMPORARY ROCK SILT CHECKS TYPE - A AT DRAINAGE OUTLETS.

CLEARING AND GRUBBING EROSION CONTROL FOR CONSTRUCTION SHEET 07

UTILIZE FABRIC INSERT INLET PROTECTION DEVICE IN LIEU OF ROCK INLET SEDIMENT TRAP TYPE 'C' TO AVOID IMPOUNDING RUNOFF ON ROADWAY OPEN TO PUBLIC AND AS DIRECTED.

NOTE:
 SEE SHEET 2B-1 FOR BRIDGE SKETCH
 SEE SHEET 2B-2 FOR CURVE DATA
 SEE SHEET 16 & 17 FOR -L- PROFILE
 SEE SHEET 20 FOR PED. PROFILE
 SEE SHEET 20 FOR -Y7A- PROFILE



NAD 83

MATCH LINE SEE SHEET 12

MATCH LINE -L- STA 449+00 SEE SHEET 6

MATCH LINE -L- STA 463+00 SEE SHEET 8

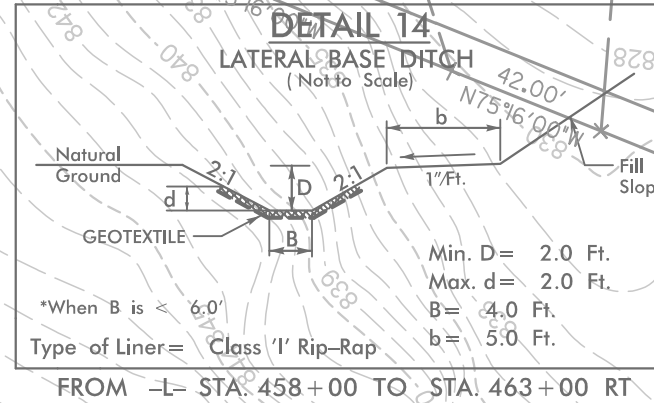
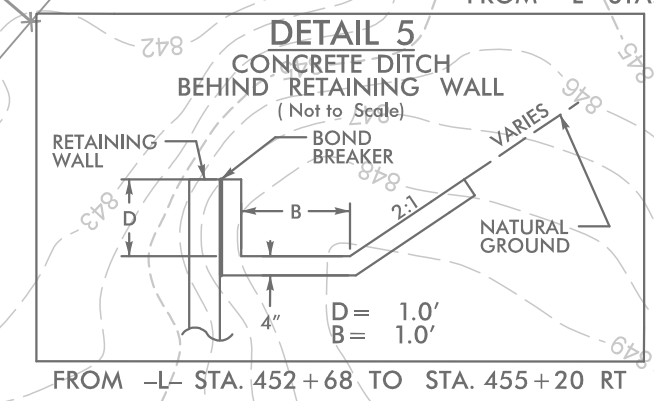
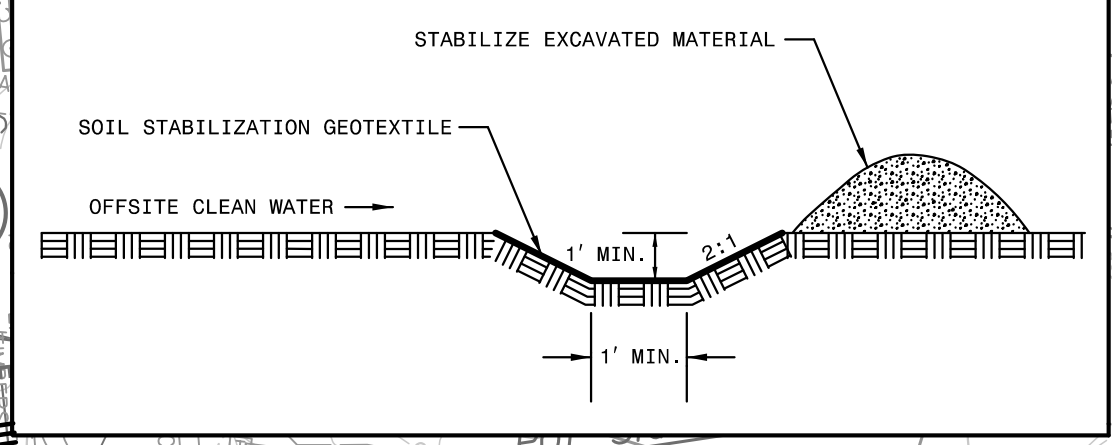
112 x 56 x 3
 2.5 inch Skimmer
 with 2.25 inch
 Orifice Diameter
 24 ft. weir
 ID 7.1

72 x 15 x 3
 ID 7.4

1.5 inch Skimmer
 with 0.75 inch
 Orifice Diameter
 4.0 ft. weir with
 5.25 ft. weir height
 ID 7.2
 (See Earthen Dam
 with Skimmer Detail)

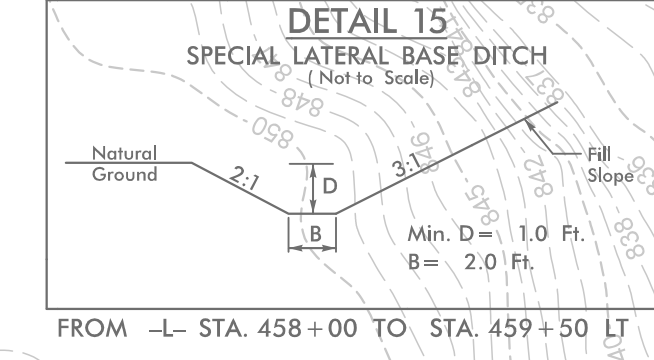
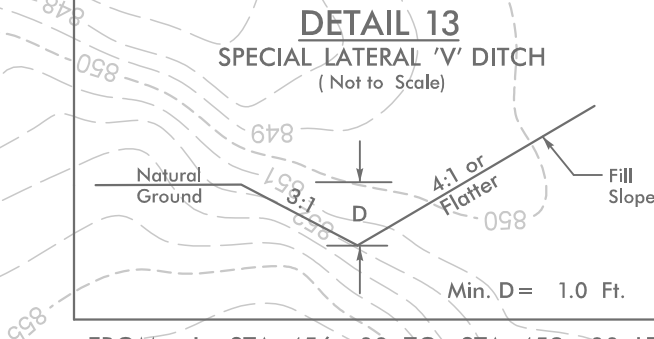
Excavate Proposed Ditch
 according to Detail 14 from
 Sta. 458+80 to Sta. 463+00 RT

CLEAN WATER DIVERSION
 (Not to Scale)



DETAIL FSM
 FALSE SUMP
 (Not to Scale)

Ditch Grade	L	Ditch Grade	L
0.0% To 2.0%	20'	Over 4.0% To 6.0%	40'
Over 2.0% To 4.0%	30'	Over 6.0%	50'



9:30 AM 11/25/24 CG.PSH.07.dgn