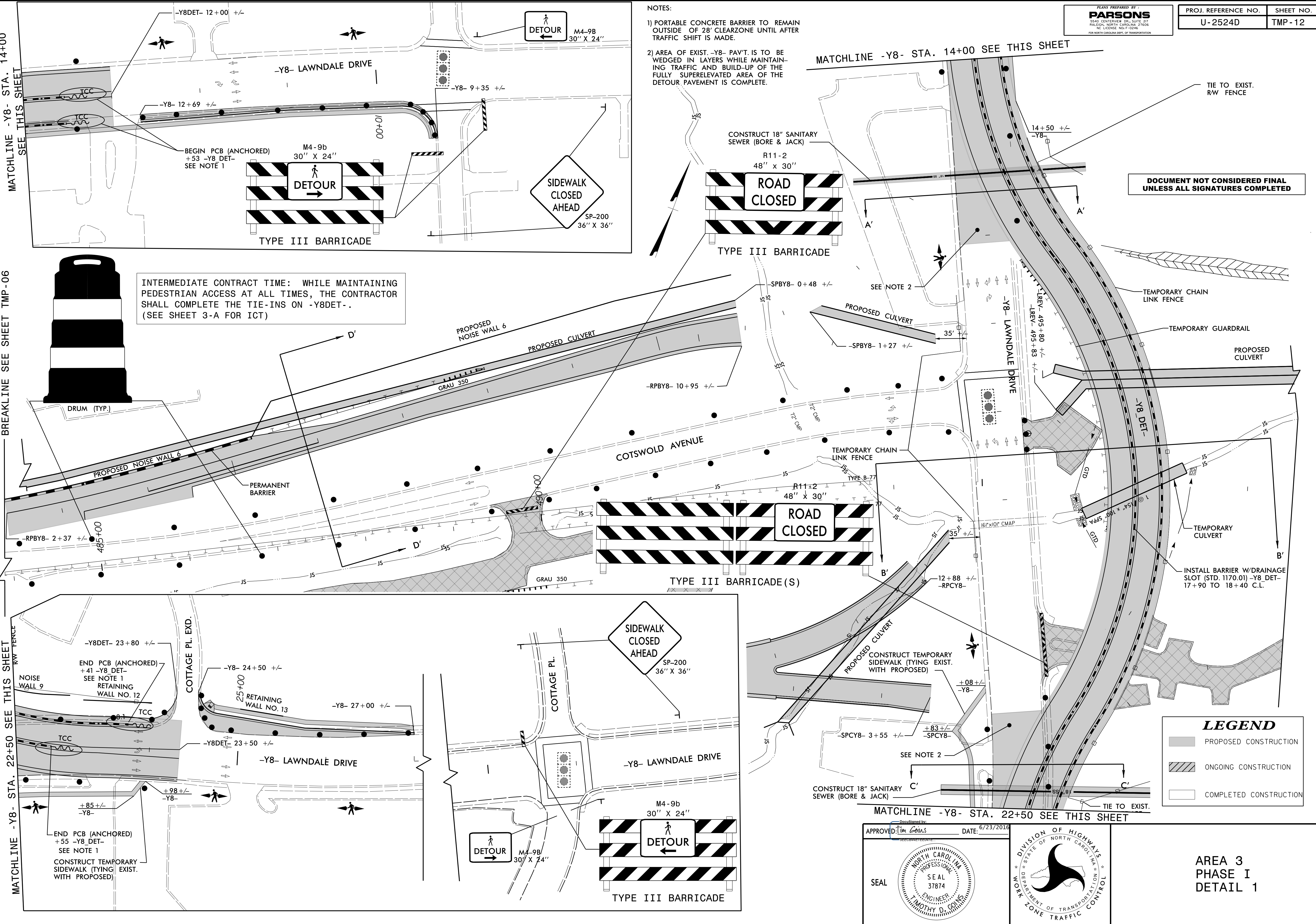


PLANS PREPARED BY
PARSONS
 5500 CENTERVILLE ROAD, SUITE 200
 RALEIGH, NORTH CAROLINA 27606
 NC LICENSE NO. P-10248
 FOR NORTH CAROLINA DEPT. OF TRANSPORTATION

NOTES:

- 1) PORTABLE CONCRETE BARRIER TO REMAIN OUTSIDE OF 28' CLEARZONE UNTIL AFTER TRAFFIC SHIFT IS MADE.
- 2) AREA OF EXIST. -Y8- PAVT. IS TO BE WEDGED IN LAYERS WHILE MAINTAINING TRAFFIC AND BUILD-UP OF THE FULLY SUPERELEVATED AREA OF THE DETOUR PAVEMENT IS COMPLETE.



MATCHLINE -Y8- STA. 14+00 SEE THIS SHEET

BREAKLINE SEE SHEET TMP-06

MATCHLINE -Y8- STA. 22+50 SEE THIS SHEET

MATCHLINE -Y8- STA. 14+00 SEE THIS SHEET

MATCHLINE -Y8- STA. 22+50 SEE THIS SHEET

INTERMEDIATE CONTRACT TIME: WHILE MAINTAINING PEDESTRIAN ACCESS AT ALL TIMES, THE CONTRACTOR SHALL COMPLETE THE TIE-INS ON -Y8DET-. (SEE SHEET 3-A FOR ICT)

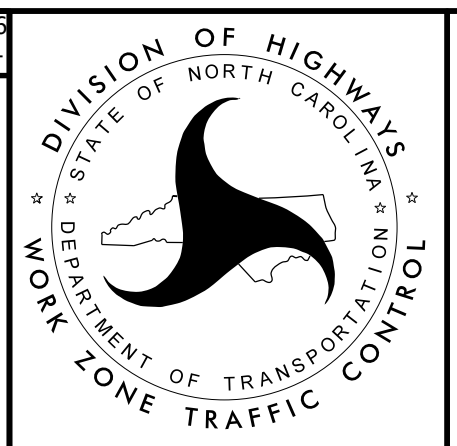
DOCUMENT NOT CONSIDERED FINAL
 UNLESS ALL SIGNATURES COMPLETED

LEGEND

	PROPOSED CONSTRUCTION
	ONGOING CONSTRUCTION
	COMPLETED CONSTRUCTION

APPROVED:

DATE: 6/23/2016



AREA 3
 PHASE I
 DETAIL 1

23-JUN-2016 09:39
 J:\U-2524D\TrafficControl\TCP\U-2524D-Tc_Tcp_12.dgn
 \$\$\$USERNAME\$\$\$