

5/28/2016

BM #20 ELEVATION = 787.30'  
N = 871657 E = 1756384  
-L- STATION 520+12 151' LEFT  
R/R SPIKE SET IN 24" OAK

CULVERT HYDRAULIC DATA

DESIGN DISCHARGE = 390 CFS  
DESIGN FREQUENCY = 50 YRS  
DESIGN HW ELEVATION = 771.7 FT  
BASE DISCHARGE = 410 CFS  
BASE FREQUENCY = 100 YRS  
BASE HW ELEVATION = 771.88 FT  
OVERTOPPING DISCHARGE = >470+ CFS  
OVERTOPPING FREQUENCY = >500+ YRS  
OVERTOPPING ELEVATION = 777.83 FT

-RPAY8-

**HNTB**  
HNTB NORTH CAROLINA, P.C.  
348 S. 51st Street, Suite 200  
Raleigh, North Carolina 27609  
NC License No. C-1584

PLANS PREPARED BY:  
**PARSONS**  
RALEIGH, NORTH CAROLINA (99) 854-1345  
NC LICENSE NO. F-0246  
FOR NORTH CAROLINA DEPT. OF TRANSPORTATION

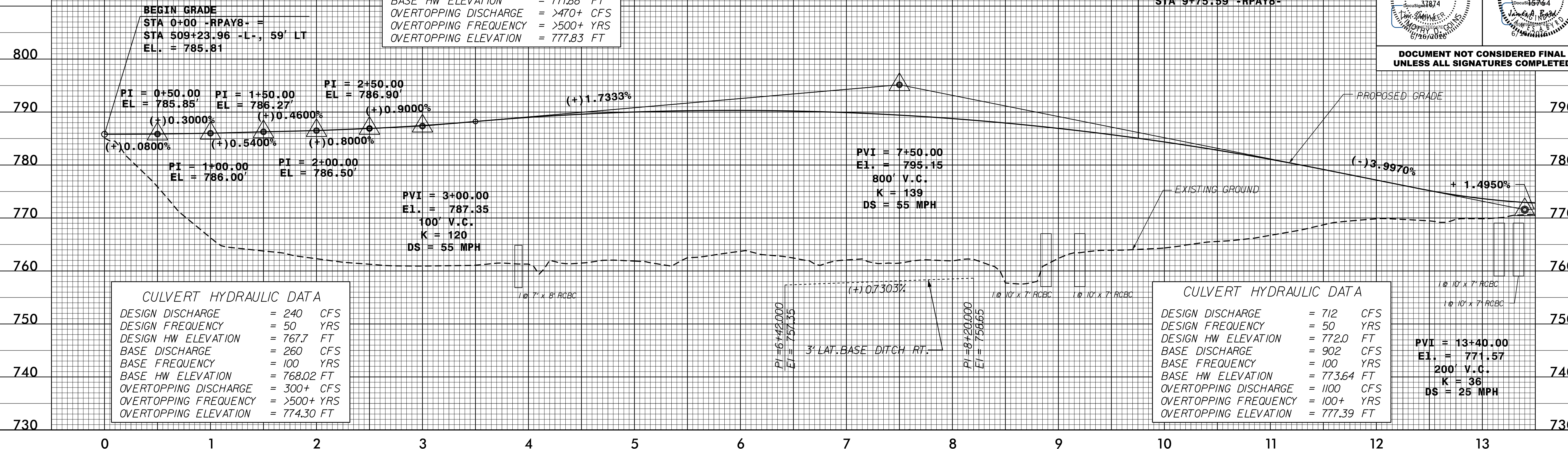
PROJECT REFERENCE NO. U-2524D  
SHEET NO. 24

ROADWAY DESIGN ENGINEER  
HYDRAULICS ENGINEER

SEAL  
37874  
Professional Engineer  
North Carolina  
10/16/2015

SEAL  
5764  
Professional Engineer  
North Carolina  
10/16/2015

DOCUMENT NOT CONSIDERED FINAL  
UNLESS ALL SIGNATURES COMPLETED



BM #19 ELEVATION = 841.27'  
N = 869867 E = 1754214  
-Y8- STATION 31+26  
S 22°19' 57.9" E DIST 312.72'  
R/R SPIKE SET IN 18" OAK

-RPAY8-



24 MAY 2016 2:35:41 PM P:\proj\2524D\RDY\_PSH\_24.dgn