

5/28/2016

BM #14 ELEVATION = 838.41'
N = 871003 E=1749032
-Y5- STATION 10+00
N 29° 20' 41.8" W DIST 89.26'
R/R SPIKE SET IN 10" POPLAR

-Y5-

NOTE:
SEE SHEET 12 FOR -Y5- PLAN
SEE SHEETS 7 & 12 FOR PED.PLAN
SEE SHEET 6 FOR -Y6A- PLAN
SEE SHEET 7 FOR -Y7A- PLAN

BM #15 ELEVATION = 858.80'
N = 869765 E = 1749815
-L- STATION 452+71.535' RIGHT
R/R SPIKE SET IN 30" OAK

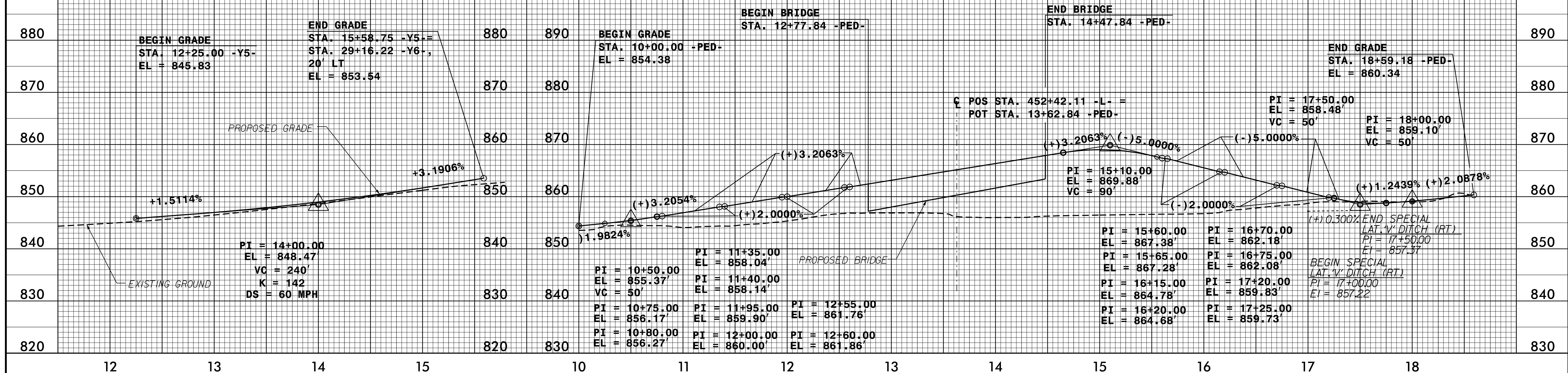
-PED-

HNTB HNTB NORTH CAROLINA, P.C.
349 S.W. 1st Street, Suite 200
Raleigh, North Carolina 27609
NC License No. C-1584

PLANS PREPARED BY:
PARSONS
RALEIGH, NORTH CAROLINA, (919) 854-1345
NC LICENSE NO. F-0246
FOR NORTH CAROLINA DEPT. OF TRANSPORTATION

PROJECT REFERENCE NO. U-2524D	SHEET NO. 20
ROADWAY DESIGN ENGINEER	HYDRAULICS ENGINEER

DOCUMENT NOT CONSIDERED FINAL
UNLESS ALL SIGNATURES COMPLETED



3-MAY-2016 13:39 3-11-16 15:24 15:33 3-11-16 15:24 15:33 3-11-16 15:24 15:33 3-11-16 15:24 15:33

BM #15 ELEVATION = 858.80'
N = 869765 E = 1749815
-L- STATION 452+71.535' RIGHT
R/R SPIKE SET IN 30" OAK

-Y6A-

BM #15 ELEVATION = 858.80'
N = 869765 E = 1749815
-L- STATION 452+71.535' RIGHT
R/R SPIKE SET IN 30" OAK

-Y7A-

BM #16 ELEVATION = 858.87'
N = 871604 E = 1750336
-Y6- STATION 38+36
N 27° 01' 55.4" E DIST 377.11'
R/R SPIKE SET IN 18" OAK

