

5/28/99

BM #14 ELEVATION = 838.41'
N = 871003 E=1749032
-Y5- STATION 10+00
N 29° 20' 41.8" W DIST 89.26'
R/R SPIKE SET IN 10" POPLAR

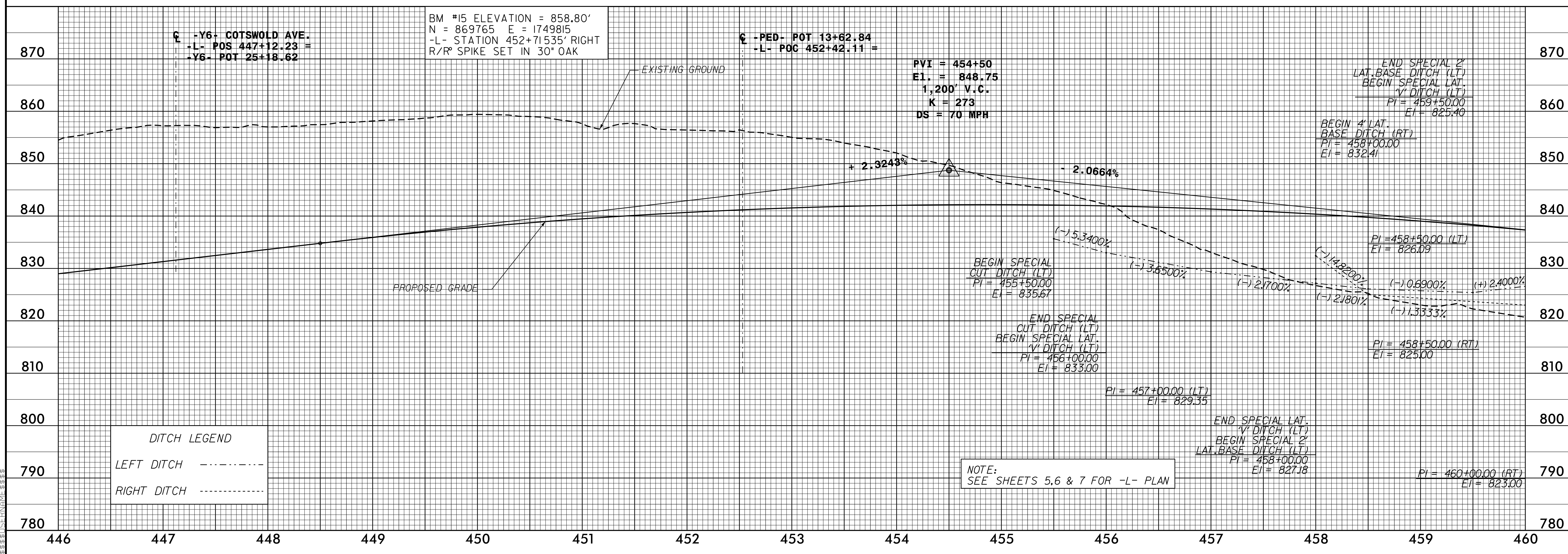
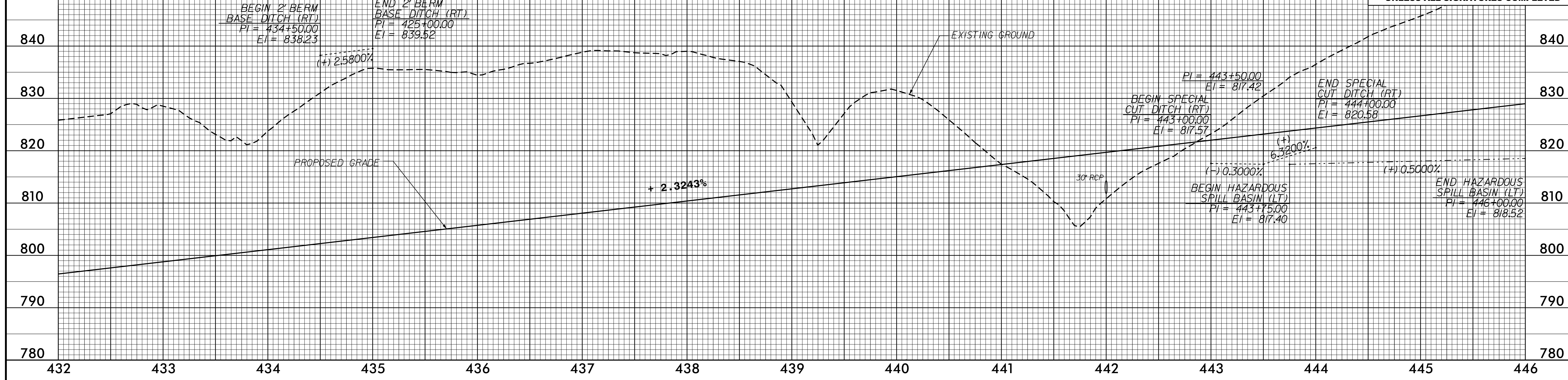


HNTB
HNTB NORTH CAROLINA, P.C.
3814 Poplar Road, Suite 200
Raleigh, North Carolina 27609
NC License No. C-1584

PLANS PREPARED BY:
PARSONS
RALEIGH, NORTH CAROLINA, (919) 854-1345
NC LICENSE NO. F-0246
FOR NORTH CAROLINA DEPT. OF TRANSPORTATION

PROJECT REFERENCE NO. U-2524D	SHEET NO. 16
ROADWAY DESIGN ENGINEER	HYDRAULICS ENGINEER

DOCUMENT NOT CONSIDERED FINAL
UNLESS ALL SIGNATURES COMPLETED



DITCH LEGEND

LEFT DITCH	-----
RIGHT DITCH	-----

NOTE:
SEE SHEETS 5, 6 & 7 FOR -L- PLAN

C:\N\2524D\2524D_PSH_16.dgn
5/28/99 10:53 AM
3814 POPLAR RD, SUITE 200
RALEIGH, NC 27609
HNTB