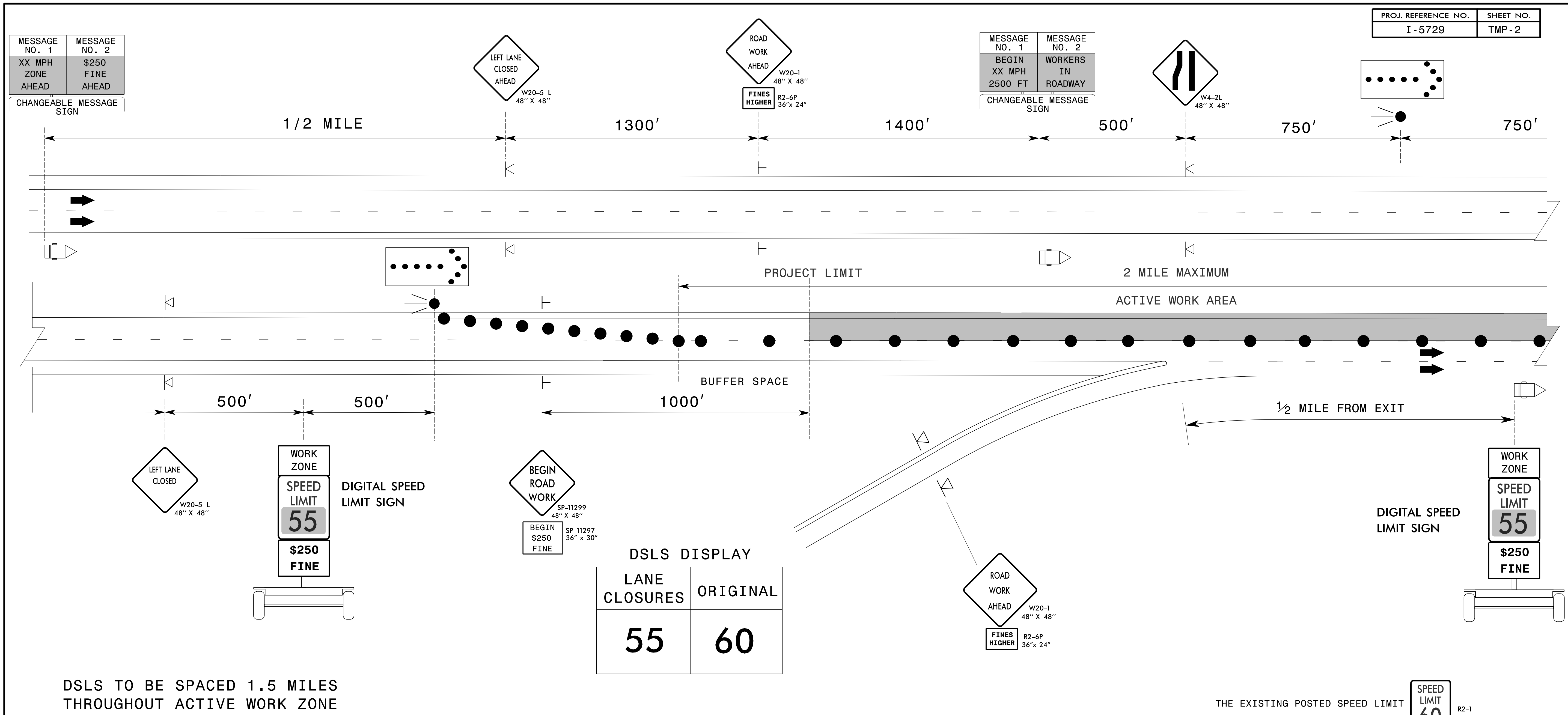


MESSAGE NO. 1	MESSAGE NO. 2
XX MPH ZONE AHEAD	\$250 FINE AHEAD

CHANGEABLE MESSAGE SIGN

MESSAGE NO. 1	MESSAGE NO. 2
BEGIN XX MPH ZONE AHEAD	WORKERS IN ROADWAY

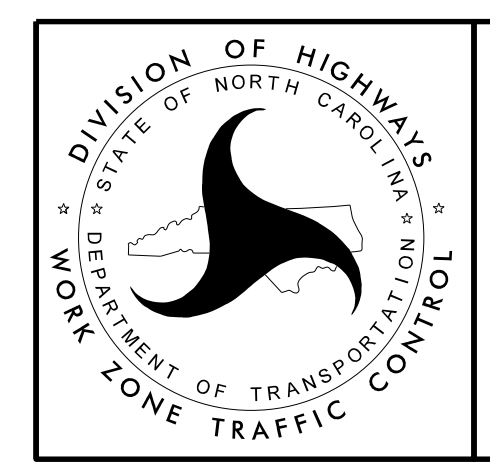
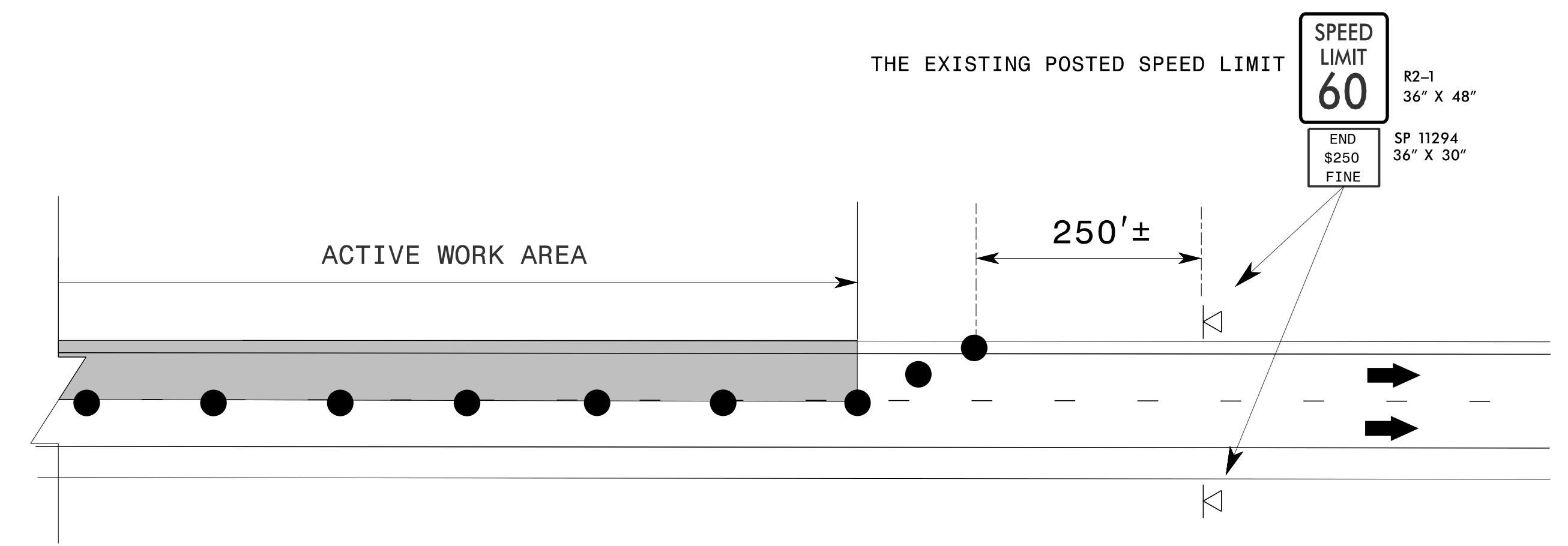
CHANGEABLE MESSAGE SIGN



DSLS TO BE SPACED 1.5 MILES THROUGHOUT ACTIVE WORK ZONE

### GUIDELINES

1. NCDOT HAS SOLE AUTHORITY OF THE SPEED LIMITS DISPLAYED ON THE DIGITAL SPEED LIMIT SIGNS.
2. THE WORK ZONE VARIABLE SPEED LIMIT REDUCTION ("WZVSLR") IS FOR USE ONLY AFTER AN ENGINEERING INVESTIGATION HAS BEEN PERFORMED BY THE REGIONAL TRAFFIC ENGINEER, THE DIVISION AND THE WORK ZONE TRAFFIC CONTROL SECTION.
3. THE "WZVSLR" IS INTENDED FOR USE ON FREEWAYS WITH ORIGINAL SPEED LIMITS 60 MPH OR GREATER. THE POSTED SPEED LIMITS DISPLAYED WITHIN THE ACTIVE WORK ZONE MAY VARY BETWEEN 55 MPH TO 70 MPH, DEPENDENT UPON ROAD WORK CONDITIONS AND THE ORIGINAL SPEED LIMIT OF THE FACILITY.
4. THIS APPLICATION IS FOR SHORT-TERM ACTIVITIES (i.e. LANE CLOSURES AND ROAD CLOSURES). THE MAXIMUM LANE CLOSURE LENGTH IS 2 MILES UNLESS OTHERWISE SHOWN IN THE PLANS. THE "WZVSLR" SHALL NOT BE IN OPERATION CONTINUOUSLY (24/7) FOR A PERIOD EXCEEDING 30 CALENDAR DAYS.
5. ALL ORIGINAL SPEED LIMIT SIGNS SHALL BE COVERED OR REMOVED. THE DIGITAL SPEED LIMIT SIGNS WILL TAKE THE PLACE OF ALL ORIGINAL STATIONARY SPEED LIMIT SIGNS. THE DIGITAL SPEED LIMIT SIGNS MAY BE TRAILER MOUNTED OR STATIONARY MOUNTED.
6. THE STATE TRAFFIC ENGINEER HAS TO ORDINANCE THE "WZVSLR" IN ORDER FOR THE REDUCTION AND/OR \$250 SPEEDING FINE TO BE VALID AND ENFORCEABLE. NO SPEED LIMIT MESSAGES/SIGNS SHALL BE INSTALLED PRIOR TO RECEIVING A SIGNED ORDINANCE. IN ADDITION, THE \$250 SPEEDING FINE ALSO REQUIRES A SEPARATE SIGNED ORDINANCE BY THE STATE TRAFFIC ENGINEER.
6. EACH DIRECTION OF THE PROJECT IS TO BE EVALUATED FOR THE "WZVSLR". THIS DRAWING INTENTIONALLY HAS 1 DIRECTION SIGNED AS A REMINDER TO CAREFULLY CONSIDER WHETHER BOTH DIRECTIONS OF THE PROJECT NEED TO HAVE THE SPEED LIMIT REDUCED.



WORK ZONE "VARIABLE" SPEED LIMIT REDUCTION USING DIGITAL SPEED LIMIT SIGNS